



Surname _____

Other Names _____

Centre Number _____

Candidate Number _____

Candidate Signature _____

GCSE

BIOLOGY

Higher Tier Paper 2H

8461/2H

Monday 11 June 2018

Morning

Time allowed: 1 hour 45 minutes

At the top of the page, write your surname and other names, your centre number, your candidate number and add your signature.

[Turn over]



For this paper you must have:

- **a ruler**
- **a scientific calculator.**

INSTRUCTIONS

- **Use black ink or black ball-point pen.**
- **Answer ALL questions in the spaces provided.**
- **Do all rough work in this book. Cross through any work you do not want to be marked.**
- **In all calculations, show clearly how you work out your answer.**



INFORMATION

- **There are 100 marks available on this paper.**
- **The marks for questions are shown in brackets.**
- **You are expected to use a calculator where appropriate.**
- **You are reminded of the need for good English and clear presentation in your answers.**

DO NOT TURN OVER UNTIL TOLD TO DO SO



4

0	1
---	---

Many human actions are reflexes.

0	1	.	1
---	---	---	---

**Which TWO of the following are examples of reflex actions?
[2 marks]**

Tick TWO boxes.

Jumping in the air to catch a ball

Raising a hand to protect the eyes in bright light

Releasing saliva when food enters the mouth

Running away from danger

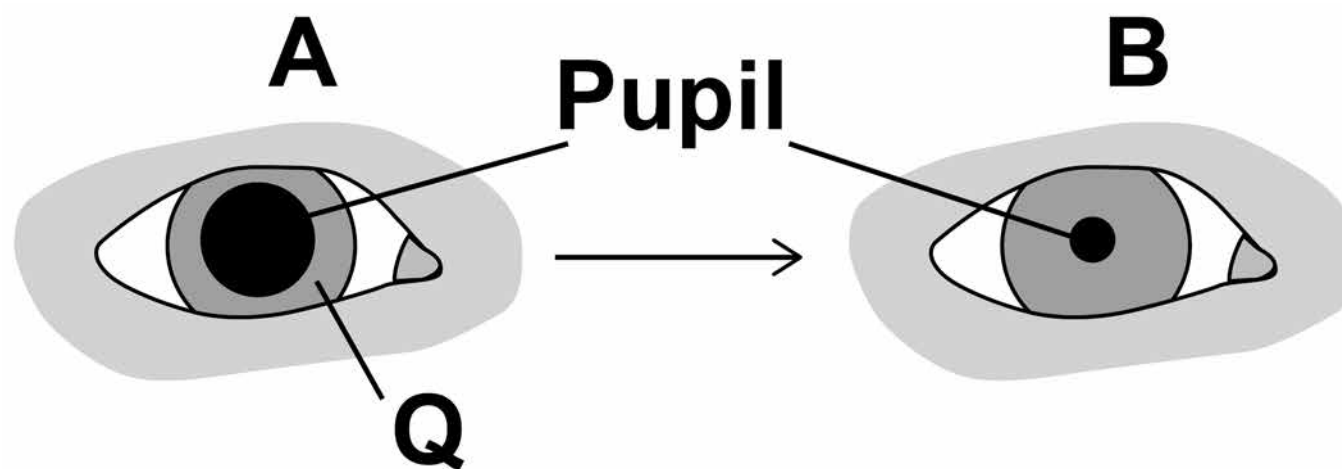
Withdrawing the hand from a sharp object



5

FIGURE 1 shows how the size of the pupil of the human eye can change by reflex action.

FIGURE 1



0 1 . 2 Name ONE stimulus that would cause the pupil to change in size from A to B, as shown in FIGURE 1. [1 mark]

0 1 . 3 Structure Q causes the change in size of the pupil.

Name structure Q. [1 mark]

[Turn over]



BLANK PAGE



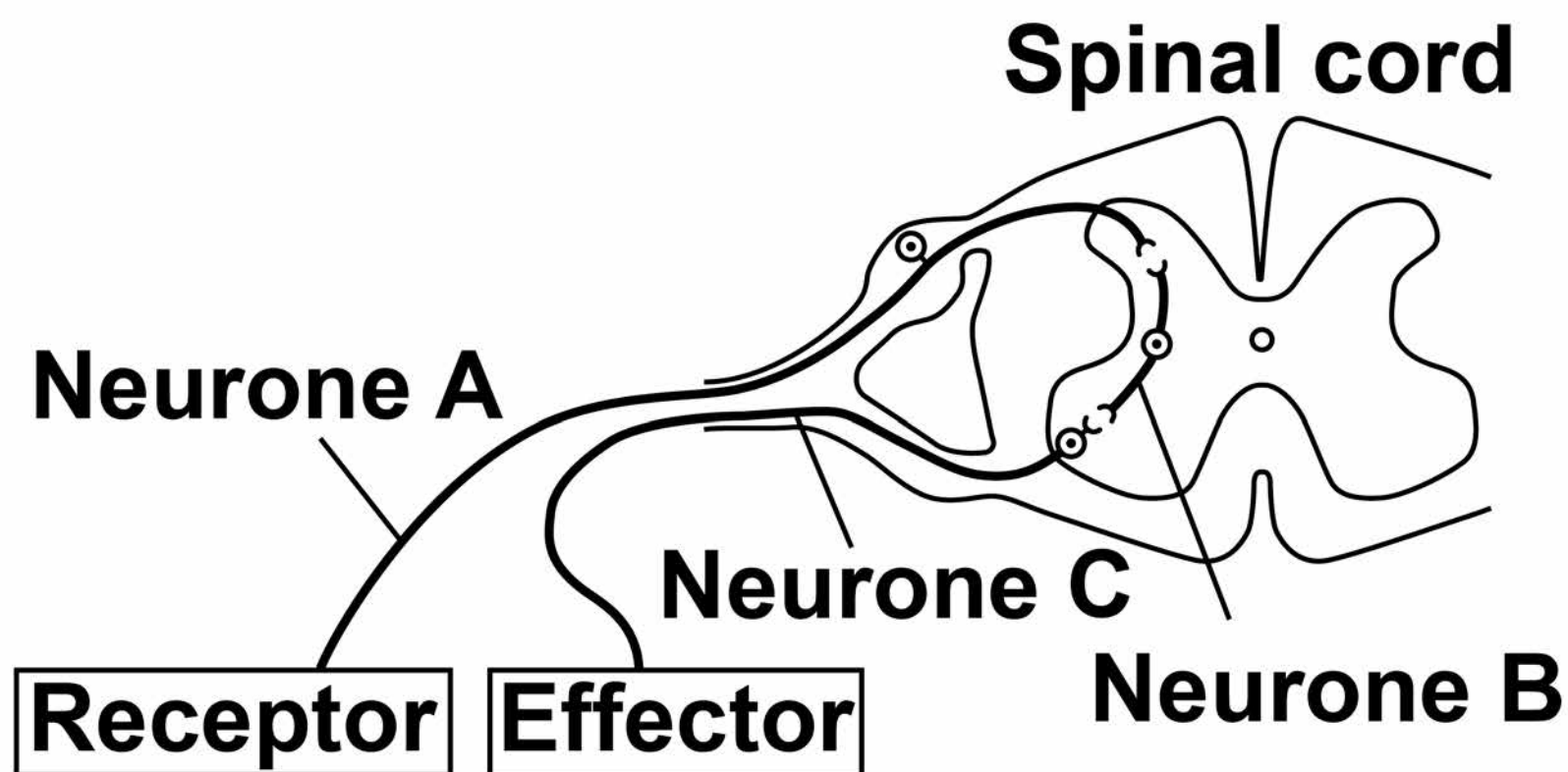
01.4

**Describe how structure Q causes the change in the size of the pupil from A to B.
[1 mark]**

[Turn over]

01.5 FIGURE 2 shows some structures involved in the coordination of a reflex action.

FIGURE 2



Describe how the structures shown in FIGURE 2 help to coordinate a reflex action.
[6 marks]

9

[Turn over]

11



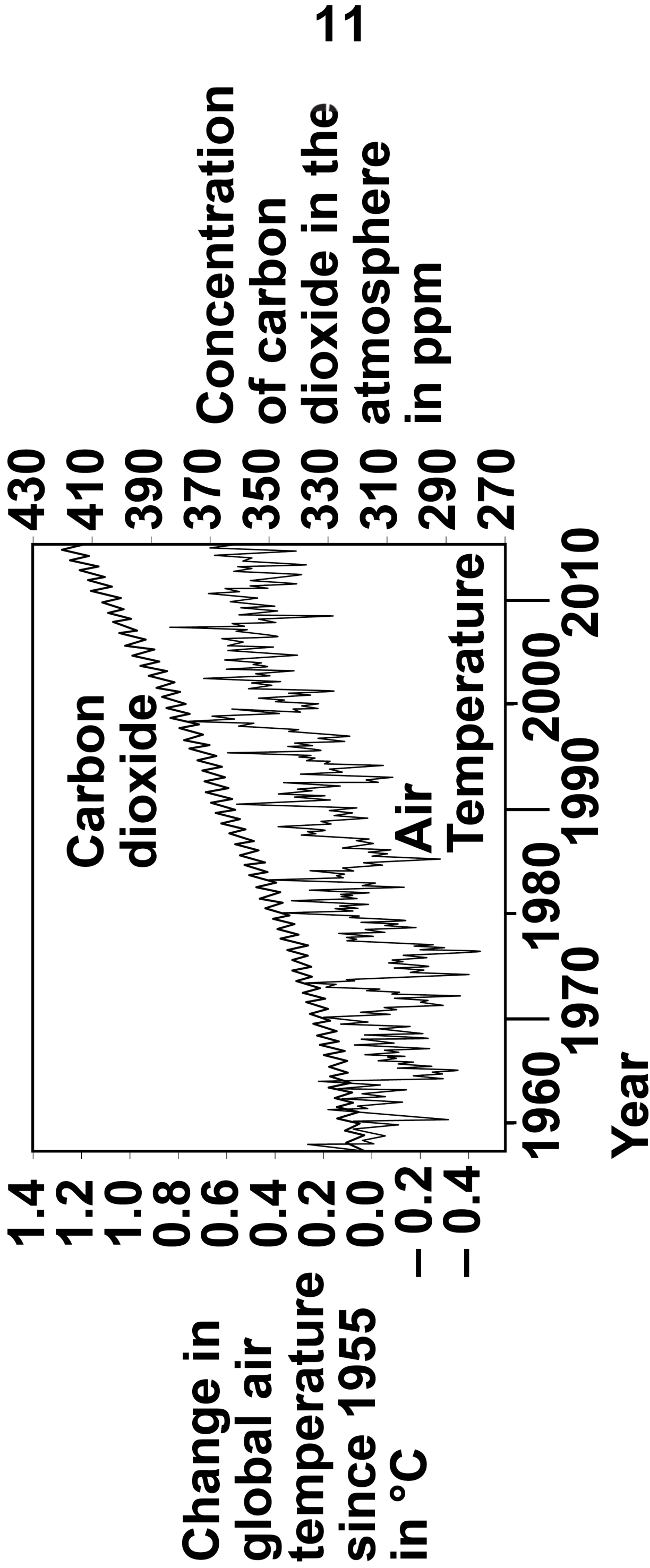
0 2

Many scientists think that global air temperature is related to the concentration of carbon dioxide in the atmosphere.

FIGURE 3 shows changes in global air temperature and changes in the concentration of carbon dioxide in the atmosphere.



FIGURE 3



[Turn over]



02.1

Complete TABLE 1, on page 13.

**Use information from FIGURE 3, on page 11.
[2 marks]**

Choose answers from the list below.

You may use each answer once, more than once or not at all.

constant

decreasing

increasing



TABLE 1

	1960 – 1977	1977 – 2003	2003 – 2015
Trend in carbon dioxide concentration	Increasing		
Trend in air temperature			

[Turn over]



14

Many scientists think that an increase in carbon dioxide concentration in the atmosphere causes an increase in air temperature.

02.2

How would an increase in the concentration of carbon dioxide in the atmosphere cause an increase in air temperature? [1 mark]

02.3

Evaluate evidence for and against the theory that an increase in the concentration of carbon dioxide in the atmosphere causes an increase in air temperature.

Use data from FIGURE 3, on page 11, and your own knowledge. [4 marks]

[Turn over]



[Turn over]



18

In each year, the concentration of carbon dioxide in the atmosphere is higher in the winter than in the summer.

0	2	.	4
---	---	---	---

Give ONE human activity that could cause the higher concentration of carbon dioxide in the winter. [1 mark]

0	2	.	5
---	---	---	---

Give ONE biological process that could cause the lower concentration of carbon dioxide in the summer. [1 mark]



0 2 . 6

Give TWO possible effects of an increase in global air temperature on living organisms. [2 marks]

1

2

11

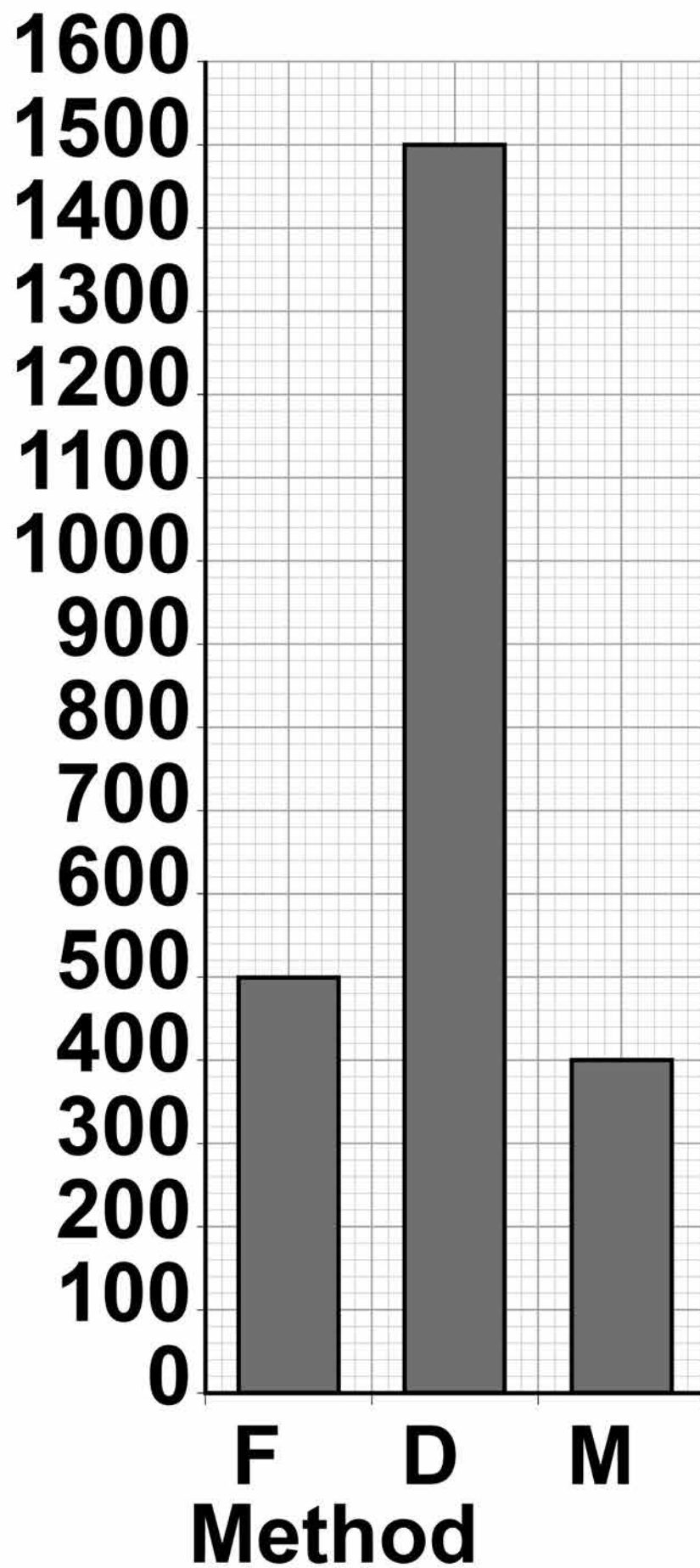
0 3

It is important to maintain water balance in the body.

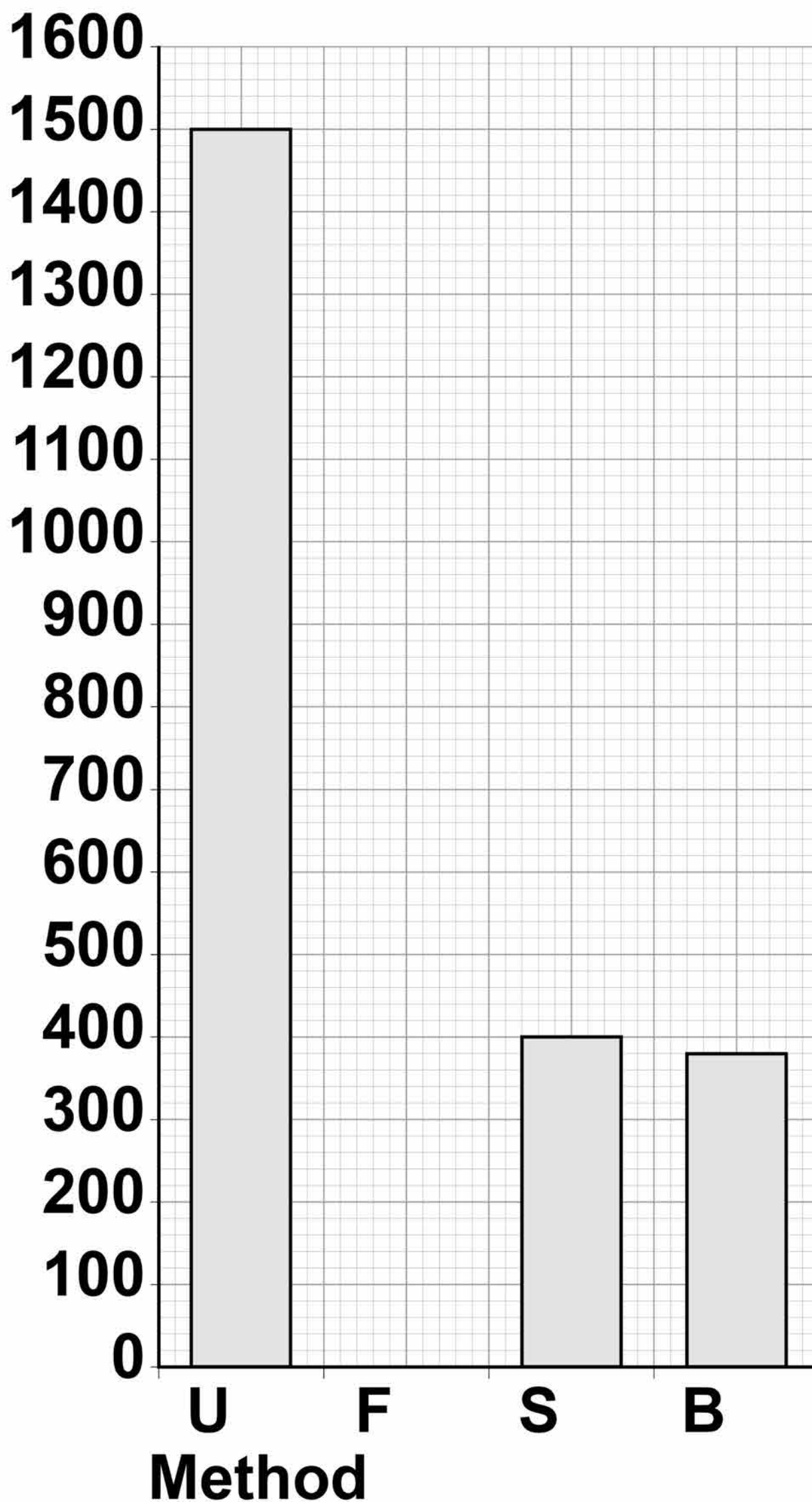
FIGURE 4, on pages 20 and 21, shows how much water a person gained and lost by different methods in one day.

[Turn over]



FIGURE 4**Water gained by the body****Volume
in cm³****KEY****F = Food D = Drink M = Metabolism**

21

Water lost from the body**Volume in cm³**

KEY U = Urine F = Faeces
S = Skin B = Breathing

[Turn over]



BLANK PAGE



23

When water is balanced, the volume of water taken in by the body is equal to the volume of water lost from the body.

03.1 Calculate the volume of water the person lost in one day in faeces.

Use information from FIGURE 4 on pages 20 and 21. [2 marks]

Volume lost in faeces =

_____ cm^3

[Turn over]



03.2 FIGURE 4, on pages 20 and 21, shows that one method of gaining water is by metabolism.

Which metabolic process produces water? [1 mark]

Tick ONE box.

Breakdown of protein to amino acids

Changing glycogen into glucose

Digestion of fat

Respiration of glucose

25

The next day, the person ran a 10-kilometre race.

The volume of water lost from the body through the skin and by breathing increased.

03.3 Explain why more water was lost through the skin during the race. [2 marks]

[Turn over]

03.4

Explain why more water was lost by breathing during the race. [3 marks]

8

BLANK PAGE

[Turn over]

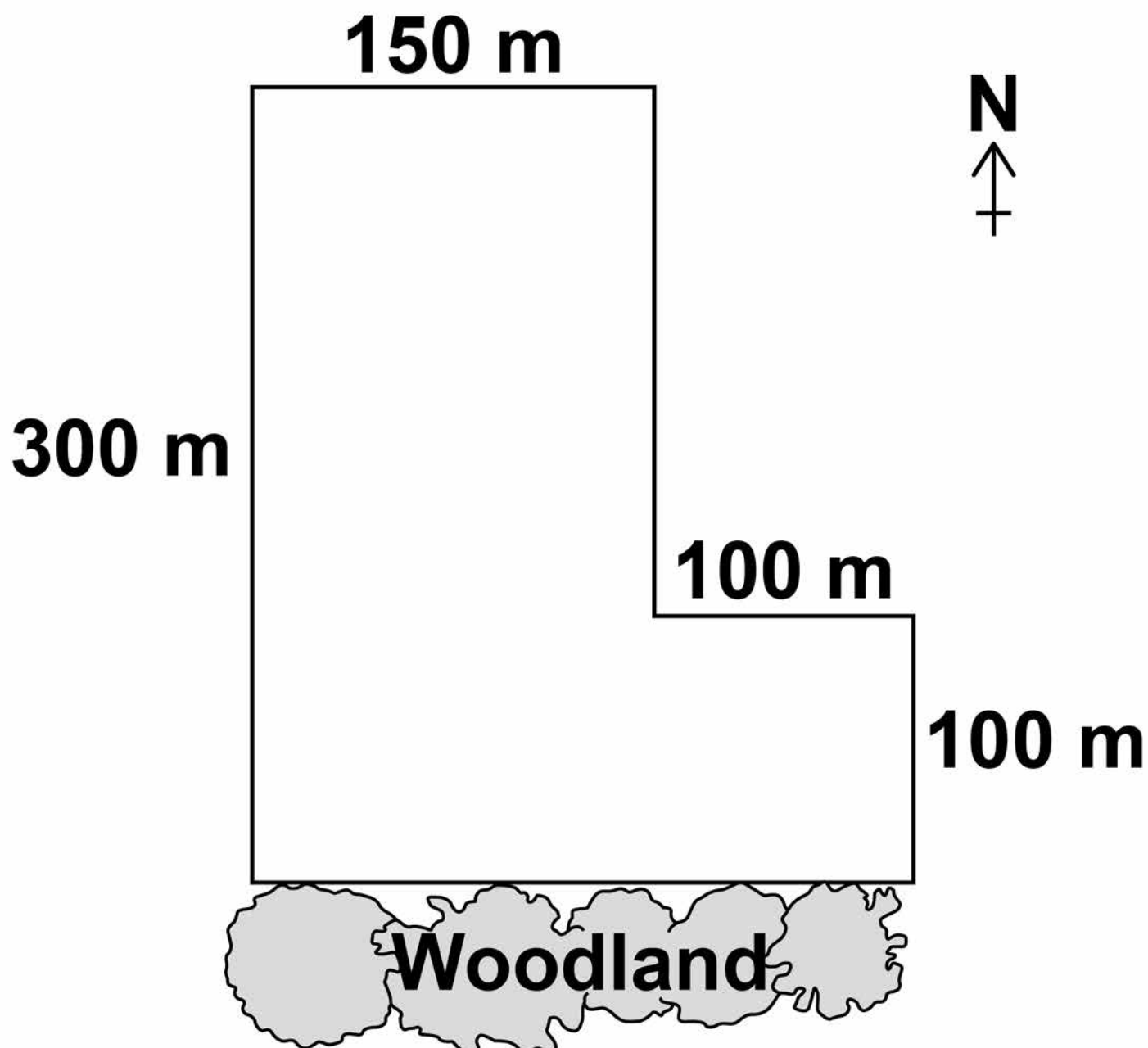


04

Some students investigated the size of a population of dandelion plants in a field.

FIGURE 5 shows the field.

FIGURE 5



The students:

- placed a 1 m x 1 m square quadrat at 10 random positions in the field
- counted the number of dandelion plants in each quadrat.



TABLE 2 shows the students' results.

TABLE 2

Quadrat number	Number of dandelion plants
1	6
2	9
3	5
4	8
5	0
6	10
7	2
8	1
9	8
10	11

[Turn over]



0 4 . 1

**Why did the students place the quadrats at random positions?
[1 mark]**

0 4 . 2 Estimate the total number of dandelion plants in the field.

Calculate your answer using information from FIGURE 5 and TABLE 2.

Give your answer in standard form. [5 marks]

Total number of dandelion plants =

[Turn over]



Quadrats 5, 7 and 8 were each placed less than 10 metres from the woodland.

These quadrats contained low numbers of dandelion plants.

The students made the hypothesis:

‘Light intensity affects the number of dandelion plants that grow in an area.’

0 4 . 3 Plan an investigation to test this hypothesis. [6 marks]

BLANK PAGE



35

0	4	.	4
---	---	---	---

Light is an environmental factor that affects the growth of dandelion plants.

Give TWO other environmental factors that affect the growth of dandelion plants. [2 marks]

1

2

[Turn over]

14



05

Cell division is needed for growth and for reproduction.

05.1

TABLE 3 contains three statements about cell division.

Complete TABLE 3. [2 marks]

Tick ONE box for each statement.

TABLE 3

Statement	Statement is true for		
	Mitosis only	Meiosis only	Both mitosis and meiosis
All cells produced are genetically identical			
In humans, at the end of cell division each cell contains 23 chromosomes			
Involves DNA replication			

[Turn over]

38

Bluebell plants grow in woodlands in the UK.

- **Bluebells can reproduce sexually by producing seeds.**
- **Bluebells can also reproduce asexually by making new bulbs.**

0 5 . 2 **One advantage of asexual reproduction for bluebells is that only ONE parent is needed.**

Suggest TWO other advantages of asexual reproduction for bluebells. [2 marks]

1

2



39

0	5	.	3
---	---	---	---

Explain why sexual reproduction is an advantage for bluebells.
[4 marks]

[Turn over]

8

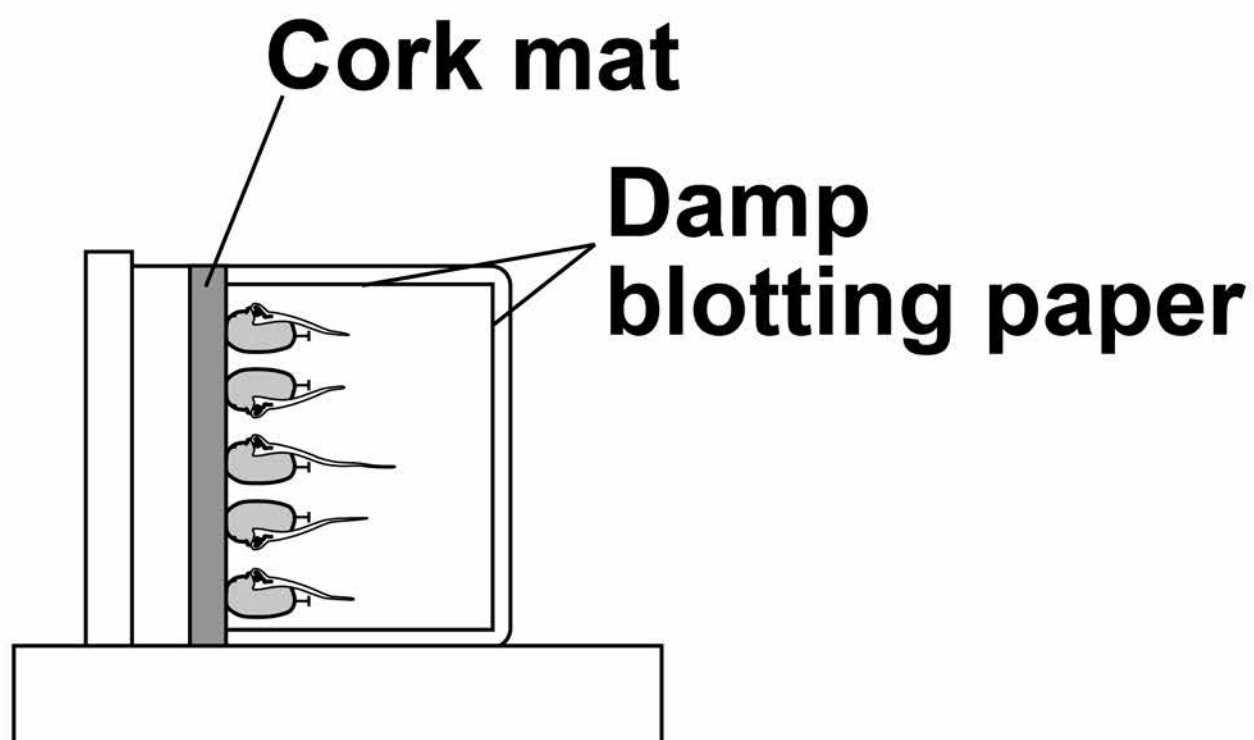


06

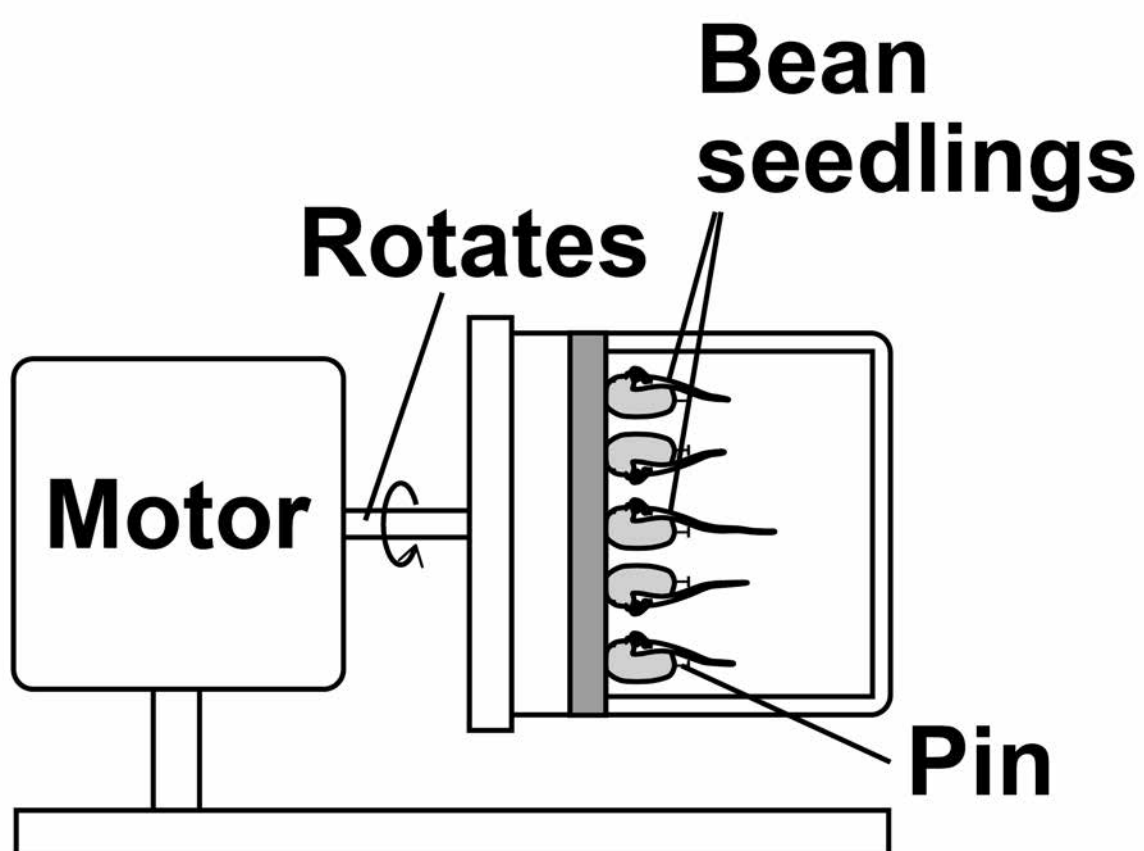
Some students investigated geotropism in the roots of bean seedlings.

FIGURE 6 shows the apparatus used.

FIGURE 6



**Apparatus A
Stationary**



**Apparatus B
Rotating**



This is the method used.

- 1. Measure the length of the root of each of 10 bean seedlings.**
- 2. Pin 5 seedlings to the cork mat in apparatus A.**
- 3. Pin 5 seedlings to the cork mat in apparatus B.**
- 4. Leave A and B in a dark cupboard for 2 days.**
- 5. After the 2 days:**
 - make a drawing to show the appearance of each seedling**
 - measure the length of the root of each seedling.**

[Turn over]



BLANK PAGE



43

06.1 Why did the students surround the seedlings with damp blotting paper? [1 mark]

Tick ONE box.

To prevent light affecting the direction of root growth

To prevent photosynthesis taking place in the roots

To prevent the growth of mould on the roots

To prevent water affecting the direction of root growth

[Turn over]



Apparatus B is a control.

Apparatus B rotates slowly.

06.2

How does apparatus B act as a control?

[1 mark]

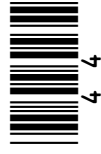


TABLE 4 shows the students' results.

TABLE 4

	Apparatus A					Apparatus B				
	1	2	3	4	5	1	2	3	4	5
Seedling number	1	2	3	4	5	1	2	3	4	5
Length at start in mm	35	41	32	33	39	30	33	29	28	31
Length after 2 days in mm	49	57	43	45	54	45	45	44	29	44
Length change in mm	14	16	11	12	15	15	12	15	1	13
Mean length change in mm	14					11				

45

[Turn over]



06.3

One student stated:

‘The mean length change for the seedlings in apparatus B is NOT valid.’

**Suggest the reason for the student’s statement.
[1 mark]**

06.4

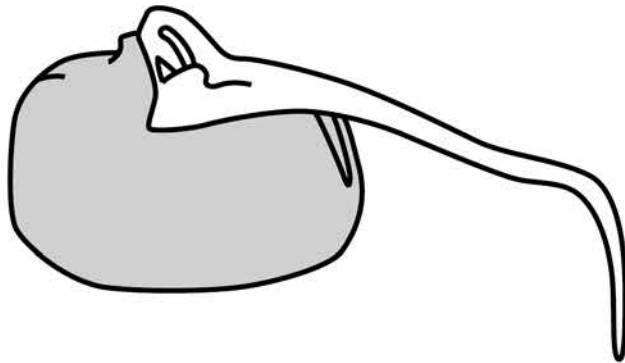
**Suggest ONE improvement the students could make to obtain a more valid mean length change for the seedlings in apparatus B.
[1 mark]**

[Turn over]

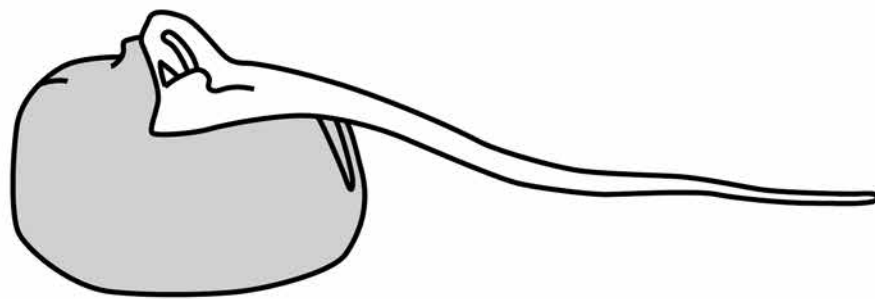


06.5 FIGURE 7 shows the students' drawings of two seedlings at the end of the 2 days.

FIGURE 7



Seedling from Apparatus A



Seedling from Apparatus B

A plant hormone is made in the root tip.

The hormone diffuses from the tip into the tissues of the root.

Explain how the hormone causes the appearance of the seedlings in FIGURE 7 to be different.

50

06.6 In horticulture plant hormones are used for controlling plant growth.

Draw ONE line from each plant hormone to the correct use of that hormone. [3 marks]



51

Plant hormone

Use of hormone

Auxin

To reduce the time taken for tomatoes to ripen

Ethene

To slow down the growth of plant stems

Gibberellin

To promote seed germination

To stimulate root growth in plant cuttings

[Turn over]

10

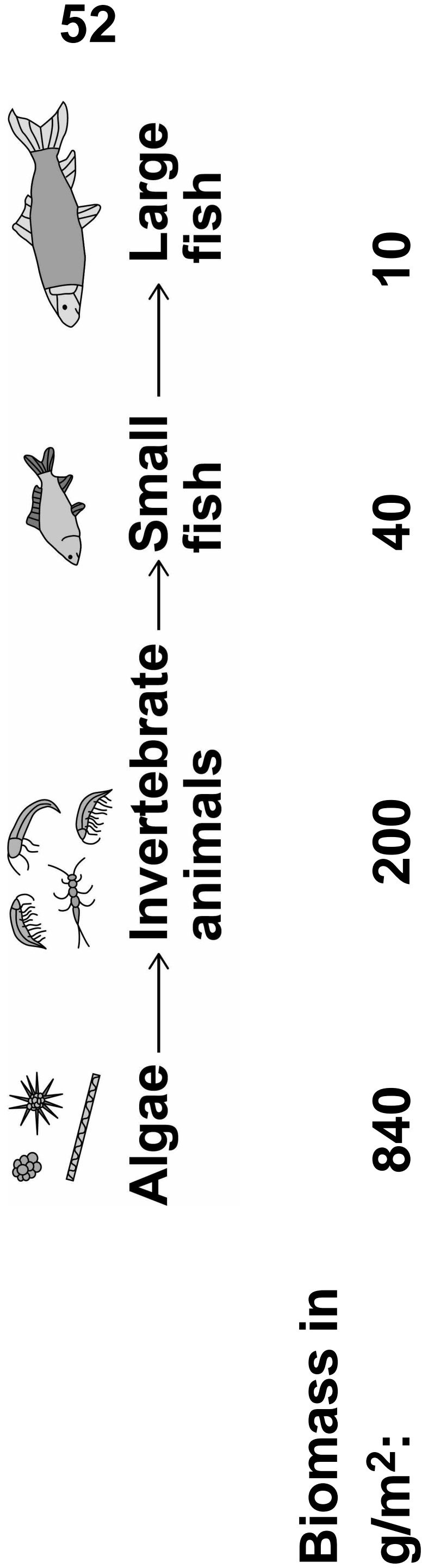


07

FIGURE 8 shows:

- **a food chain for organisms in a river**
- **the biomass of the organisms at each trophic level.**

FIGURE 8



BLANK PAGE

[Turn over]



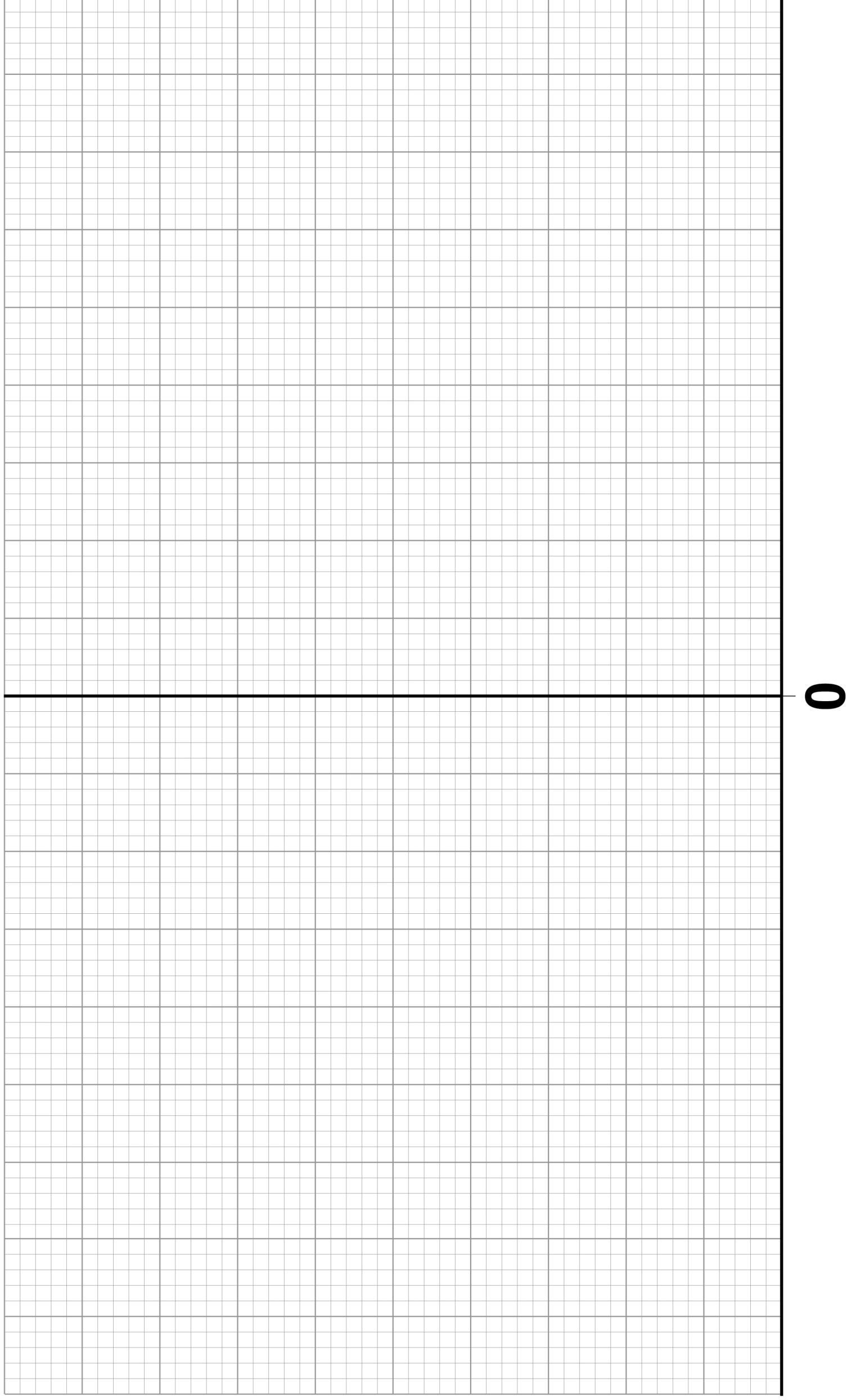
07.1 Draw a pyramid of biomass for the food chain in FIGURE 8 on FIGURE 9.

You should:

- use a suitable scale
- label the x-axis
- label each trophic level.

[4 marks]

FIGURE 9



07.2

Calculate the percentage of the biomass lost between the algae and the large fish.

**Give your answer to 2 significant figures.
[3 marks]**

Percentage loss = _____



07.3 Give ONE way that biomass is lost between trophic levels. [1 mark]

57

[Turn over]



08

Scientists want to breed cows that produce milk with a low concentration of fat.

FIGURE 10 shows information about the milk in one group of cows.

The cows were all the same type.

08.1

In FIGURE 10 the mean percentage of fat in the milk is equal to the modal value.

8

Give the mean percentage of fat in the milk of these cows. [1 mark]

Mean percentage = _____

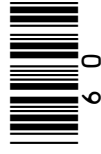
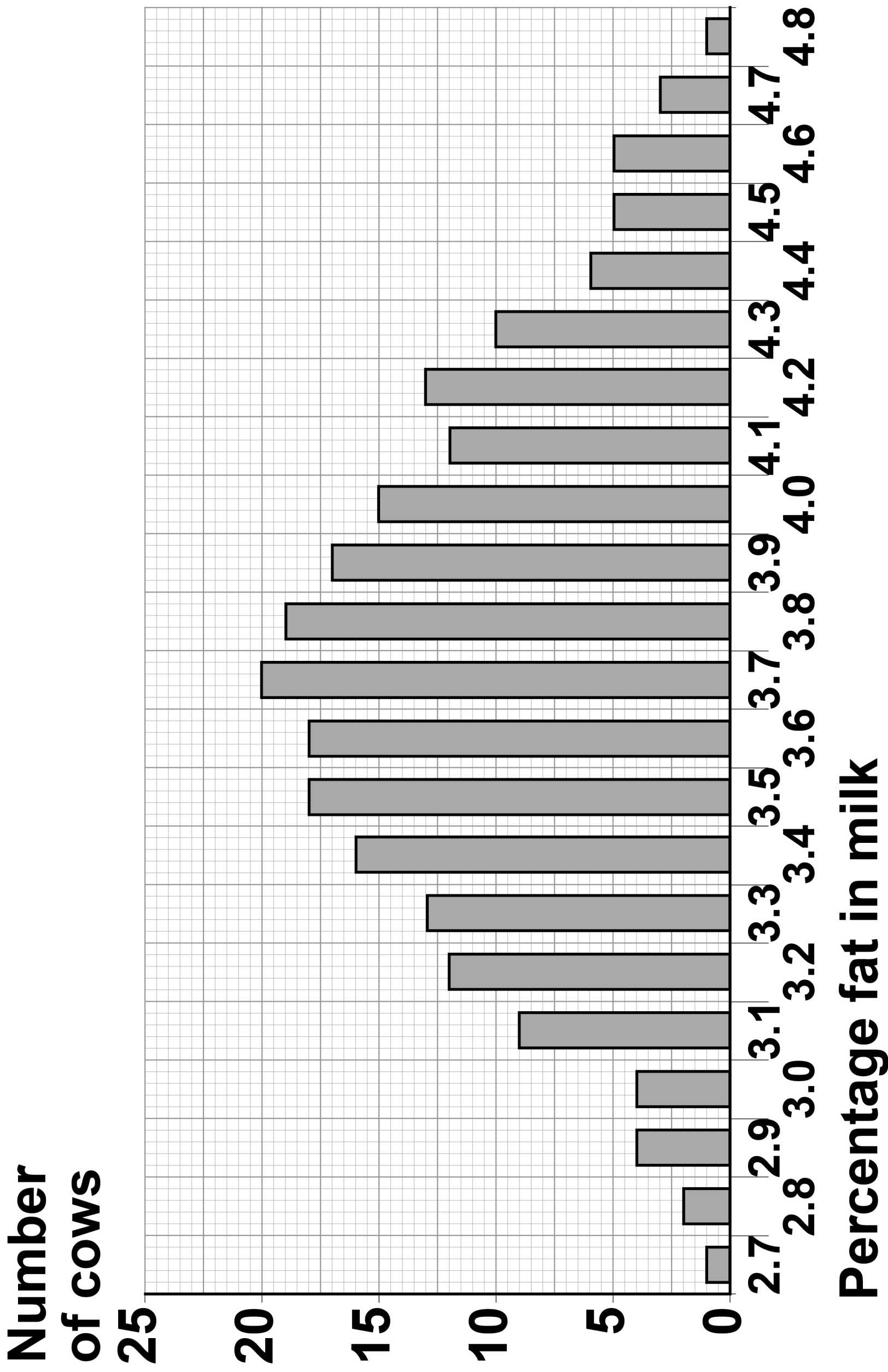


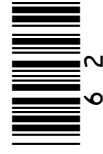
FIGURE 10



[Turn over]



BLANK PAGE



08.2

A student suggested:

‘The percentage of fat in milk is controlled by one dominant allele and one recessive allele.’

How many different phenotypes would this produce? [1 mark]

Tick ONE box.

2	<input type="checkbox"/>
---	--------------------------

3	<input type="checkbox"/>
---	--------------------------

22	<input type="checkbox"/>
----	--------------------------

46	<input type="checkbox"/>
----	--------------------------

63

08.3

Give the evidence from FIGURE 10, on page 61, which shows the percentage of fat in the milk is controlled by several genes. [1 mark]

[Turn over]

08.4 One of the genes codes for an enzyme used in fat metabolism.

A mutation in this gene causes a reduction in milk fat.

The mutation changes one amino acid in the enzyme molecule.

Explain how a change in one amino acid in an enzyme molecule could stop the enzyme working. [3 marks]

[Turn over]



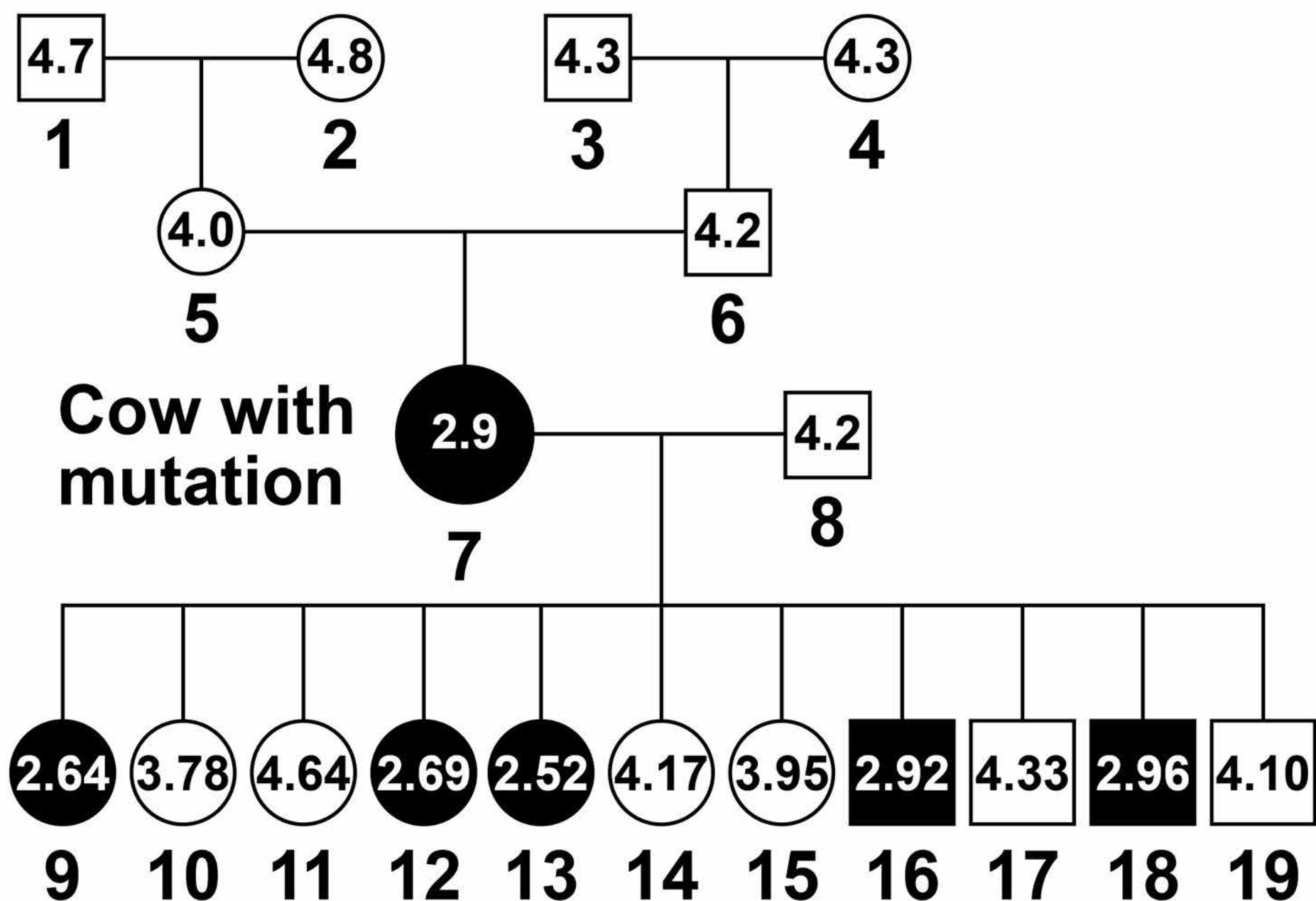
The scientists found one cow with a mutation.

The cow's milk contained only 2.9% fat.

FIGURE 11 shows the percentage of fat in the milk of cattle related to the cow with the mutation.

The values for male cattle are the mean values of their female offspring.

FIGURE 11



KEY

- Female with low-fat milk
- Male whose female offspring have low-fat milk
- Female with high-fat milk
- Male whose female offspring have high-fat milk

08.5 Animal 8 is homozygous.

The mutation in animal 7 produced a dominant allele for making low-fat milk.

Give evidence from **FIGURE 11** that animal 7 is heterozygous.
[1 mark]

[Turn over]



BLANK PAGE



08.6 Animals 7 and 8 produced 11 offspring. These offspring were produced by in vitro fertilisation (IVF).

The embryos from IVF were transferred into 11 other cows.

Suggest why IVF and embryo transfer were used rather than allowing animals 7 and 8 to mate naturally. [1 mark]

[Turn over]

BLANK PAGE



71

08.7 Draw a Punnett square diagram to show a cross between animals 7 and 8.

Identify which offspring produce low-fat milk and which offspring produce high-fat milk.
[4 marks]

Use the following symbols:

D = dominant allele for making low-fat milk

d = recessive allele for making high-fat milk



73

[Turn over]

16



09

FIGURE 12 shows a ring-tailed lemur.

FIGURE 12



TABLE 5 shows part of the classification of the ring-tailed lemur.

09**1**

Complete TABLE 5 to give the names of the missing classification groups. [2 marks]



TABLE 5

CLASSIFICATION GROUP	NAME
Kingdom	Animalia
Phylum	Chordata
	Mammalia
	Primates
	Lemuroidea
Genus	Lemur
	catta

09.2 Give the binomial name of the ring-tailed lemur.

**Use information from TABLE 5.
[1 mark]**

[Turn over]



BLANK PAGE



Lemurs are only found on the island of Madagascar.

Madagascar is off the coast of Africa.

Scientists think that ancestors of modern lemurs evolved in Africa and reached Madagascar about 50-60 million years ago.

Today there are many species of lemur living on Madagascar.

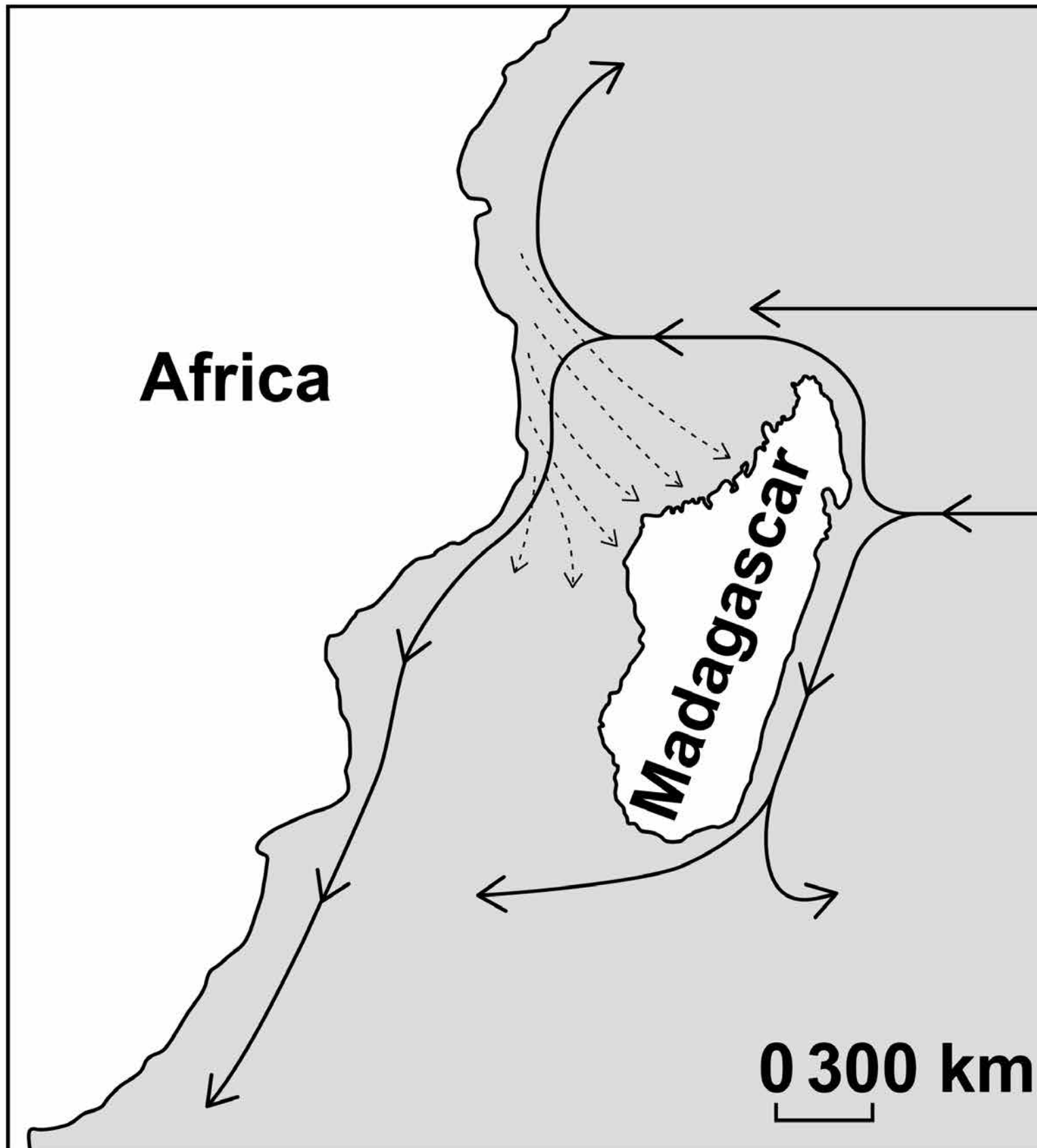
FIGURE 13, on page 78, shows information about water currents.

FIGURE 14, on page 79, shows the distribution of three species of lemur on Madagascar.

[Turn over]

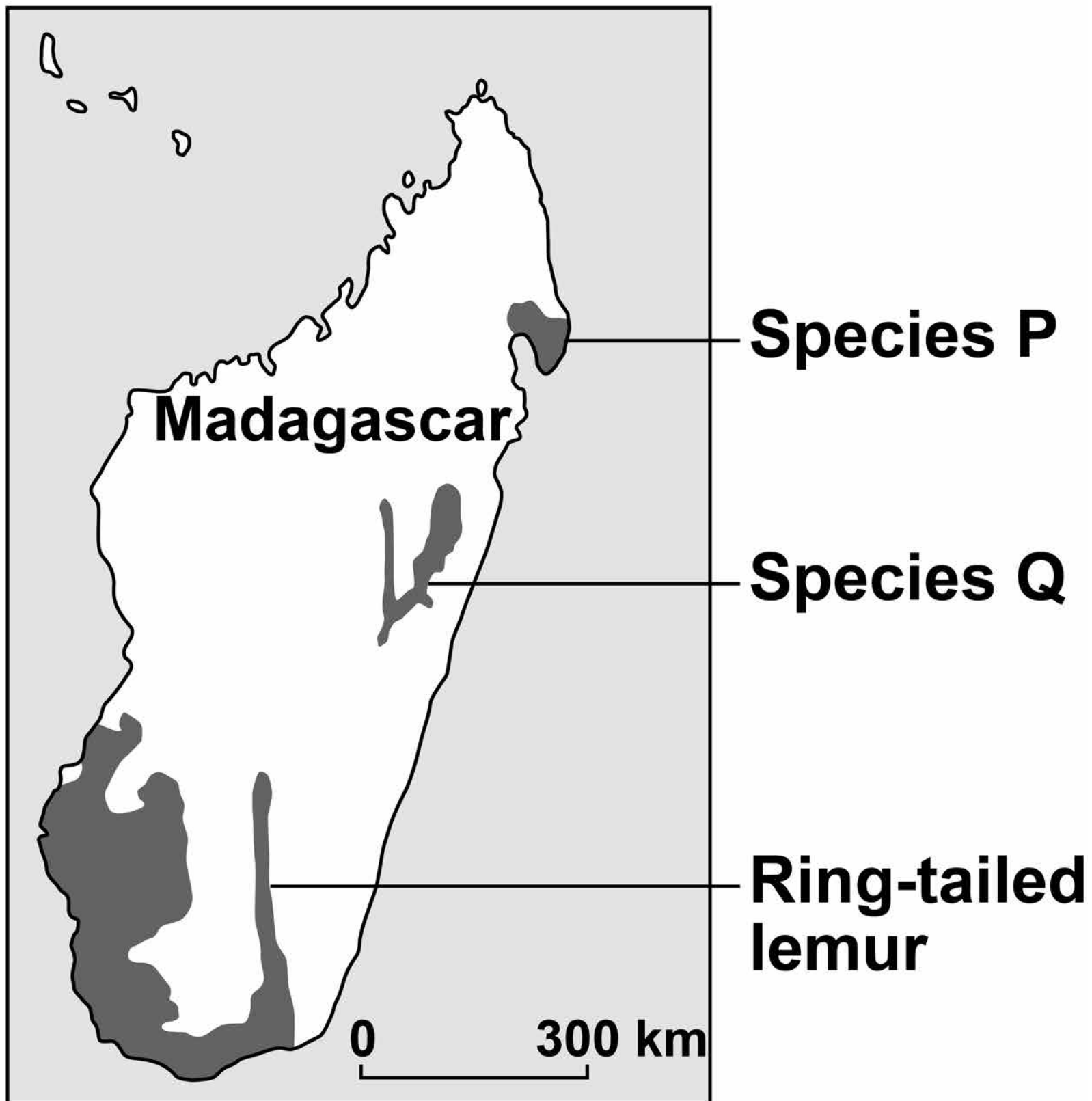


FIGURE 13

**KEY**

- > **Water currents
50 – 60 million years ago**
- > **Water currents today**

FIGURE 14



09.3 Suggest how ancestors of modern lemurs reached Madagascar. [1 mark]

[Turn over]



END OF QUESTIONS

9

There are no questions printed on this page

For Examiner's Use	
Question	Mark
1	
2	
3	
4	
5	
6	
7	
8	
9	
TOTAL	

Copyright information

For confidentiality purposes, from the November 2015 examination series, acknowledgements of third party copyright material will be published in a separate booklet rather than including them on the examination paper or support materials. This booklet is published after each examination series and is available for free download from www.aqa.org.uk after the live examination series.

Permission to reproduce all copyright material has been applied for. In some cases, efforts to contact copyright-holders may have been unsuccessful and AQA will be happy to rectify any omissions of acknowledgements. If you have any queries please contact the Copyright Team, AQA, Stag Hill House, Guildford, GU2 7XJ.

Copyright © 2018 AQA and its licensors. All rights reserved.

IB/M/Jun18/CD/8461/2H/E4

