



Cambridge IGCSE™

CANDIDATE NAME



CENTRE NUMBER

--	--	--	--	--

CANDIDATE NUMBER

--	--	--	--

GEOGRAPHY

0460/12

Paper 1 Geographical Themes

February/March 2025

1 hour 45 minutes

You must answer on the question paper.

You will need: Insert (enclosed)
Calculator
Ruler

INSTRUCTIONS

- Answer **three** questions in total, **one** from each section.
- Use a black or dark blue pen. You may use an HB pencil for any diagrams or graphs.
- Write your name, centre number and candidate number in the boxes at the top of the page.
- Write your answer to each question in the space provided.
- Do **not** use an erasable pen or correction fluid.
- Do **not** write on any bar codes.
- If additional space is needed, you should use the lined pages at the end of this booklet; the question number or numbers must be clearly shown.

INFORMATION

- The total mark for this paper is 75.
- The number of marks for each question or part question is shown in brackets [].
- The insert contains additional resources referred to in the questions.

LEDCs – Less Economically Developed Countries
MEDCs – More Economically Developed Countries

This document has **28** pages. Any blank pages are indicated.



Section A

Answer **one** question from this section.

1 (a) Study Fig. 1.1 (Insert), a map showing information about net migration.

(i) Net migration is calculated by using the formula:

net migration = number of immigrants (per 1000) – number of emigrants (per 1000)

Identify a country named on Fig. 1.1, which had more emigrants than immigrants.

..... [1]

(ii) Put the **four** countries named on Fig 1.1 in rank order of their net migration.

..... highest net migration (per 1000)
.....
.....
..... lowest net migration (per 1000)

[2]

(iii) Compare net migration in northern and southern Asia.
You should use statistics in your answer.

.....
.....
.....
.....
.....
..... [3]

DO NOT WRITE IN THIS MARGIN





(iv) Explain why some countries attract large numbers of immigrants.

.....

.....

.....

.....

.....

.....

.....

.....

.....

..... [4]

DO NOT WRITE IN THIS MARGIN





(b) Study Fig. 1.2, showing information about net migration and natural increase in New Zealand (an MEDC in Australasia) between 1962 and 2022.

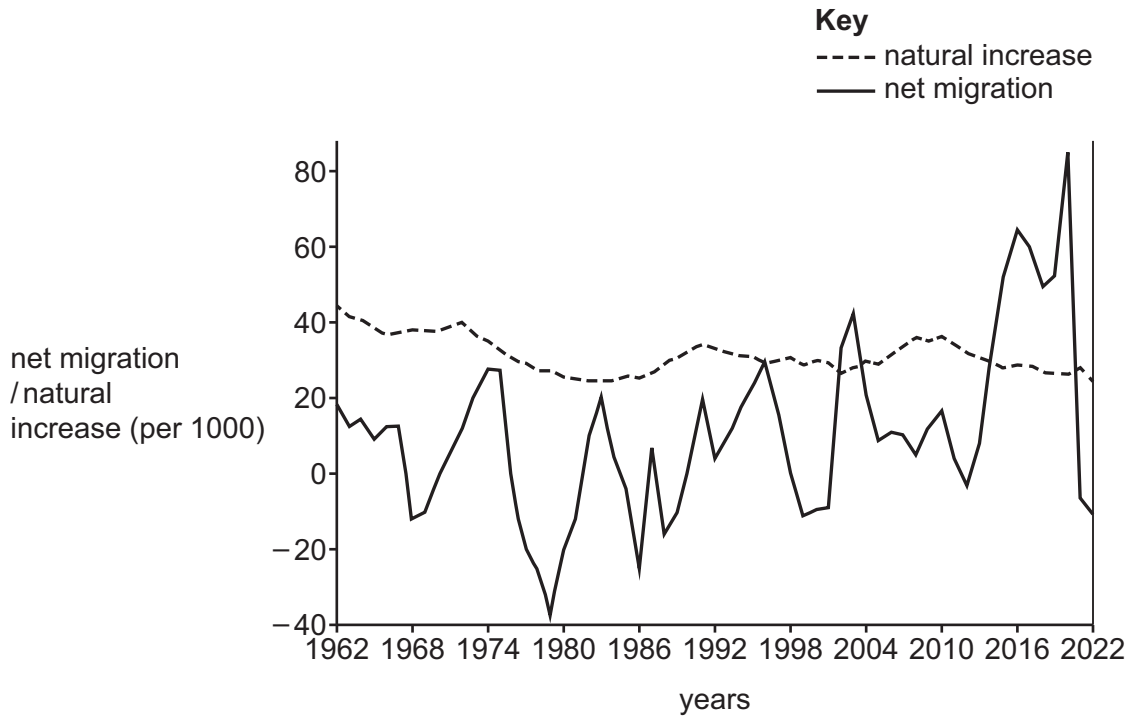


Fig. 1.2

(i) Using Fig. 1.2 **only**, compare net migration and natural increase in New Zealand between 1962 and 2022. You should refer to years and statistics to support your answer.

.....

.....

.....

.....

.....

.....

..... [3]

DO NOT WRITE IN THIS MARGIN





(ii) Describe the problems caused in a country when large numbers of people emigrate from it.

.....
.....
.....
.....
.....
.....
.....
.....
.....
..... [5]

DO NOT WRITE IN THIS MARGIN





DO NOT WRITE IN THIS MARGIN

DO NOT WRITE IN THIS MARGIN

DO NOT WRITE IN THIS MARGIN

DO NOT WRITE IN THIS MARGIN

DO NOT WRITE IN THIS MARGIN

2 (a) Study Fig. 2.1 (Insert), a map showing the percentage of people living in rural areas in Europe.

(i) What is meant by a *rural* area?

.....
..... [1]

(ii) Put the **four** countries named on Fig. 2.1 in rank order of the percentage of their population living in rural areas.

..... highest % living in rural areas
.....
.....
..... lowest % living in rural areas
..... [2]

(iii) Describe the distribution of countries in Europe where less than 20% of the population live in rural areas.

.....
.....
.....
.....
.....
..... [3]

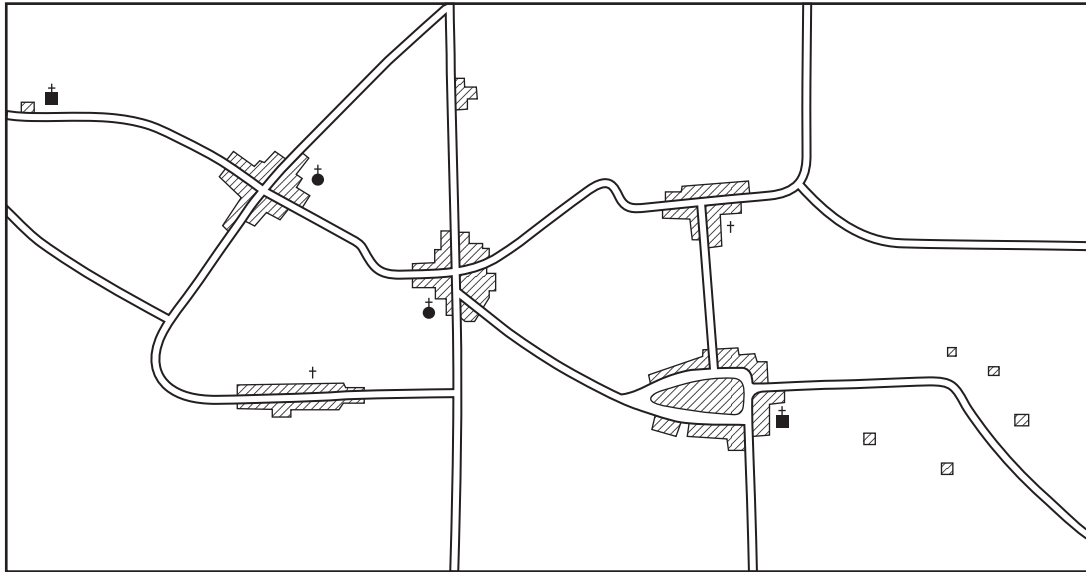
(iv) Explain why rural depopulation has occurred in many countries.

.....
.....
.....
.....
.....
.....
.....
.....
..... [4]





(b) Study Fig. 2.2, a sketch map showing different patterns of rural settlement.



Key

- roads
- rural settlements

Fig. 2.2

- (i) On Fig. 2.2, label the following:
- a nucleated settlement (label with an ‘N’)
 - a linear settlement (label with an ‘L’)
 - an area of dispersed settlement (label with a ‘D’).

[3]

- (ii) Explain why nucleated settlements develop in some parts of rural areas but linear settlements develop in other parts.

.....

.....

.....

.....

.....

.....

.....

.....

.....

.....

.....

.....

.....

.....

.....

[5]



DO NOT WRITE IN THIS MARGIN



Section B

Answer **one** question from this section.

3 (a) Study Fig. 3.1, a map showing hot deserts and tropical rainforests in South America.

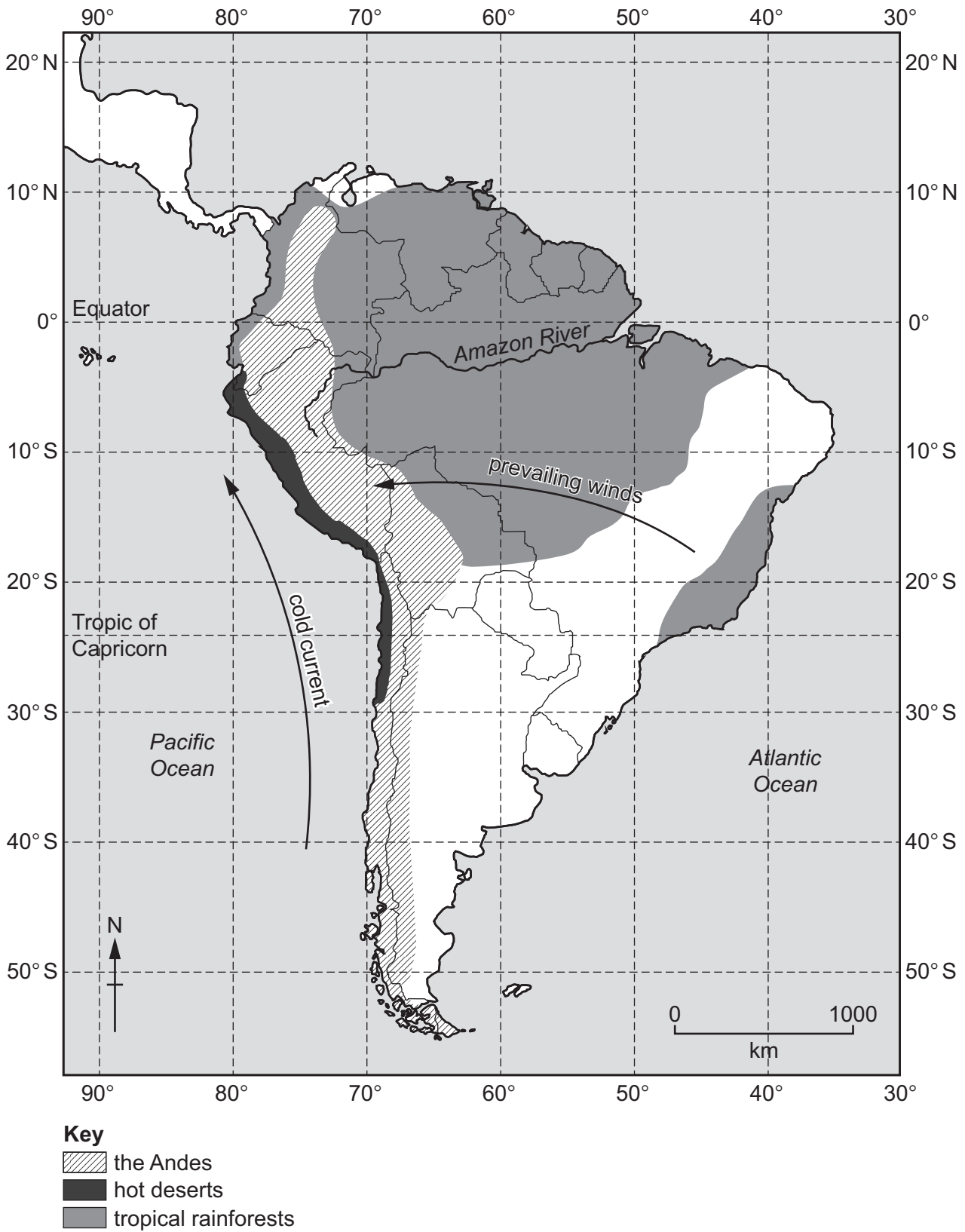


Fig. 3.1





(i) In what general direction does the Amazon River flow?

From to [1]

(ii) Using Fig. 3.1 **only**, describe the distribution of tropical rainforests in South America.

.....
.....
.....
..... [2]

(iii) Explain why areas of tropical rainforest have a small annual temperature range.

.....
.....
.....
.....
.....
.....
..... [3]

(iv) Using Fig. 3.1 **only**, explain **two** reasons for the location of the area of **hot desert**.

1
.....
.....
.....

2
.....
.....
.....

[4]

DO NOT WRITE IN THIS MARGIN





(b) Study Fig. 3.2, climate graphs of **three** places on the west coast of South America.

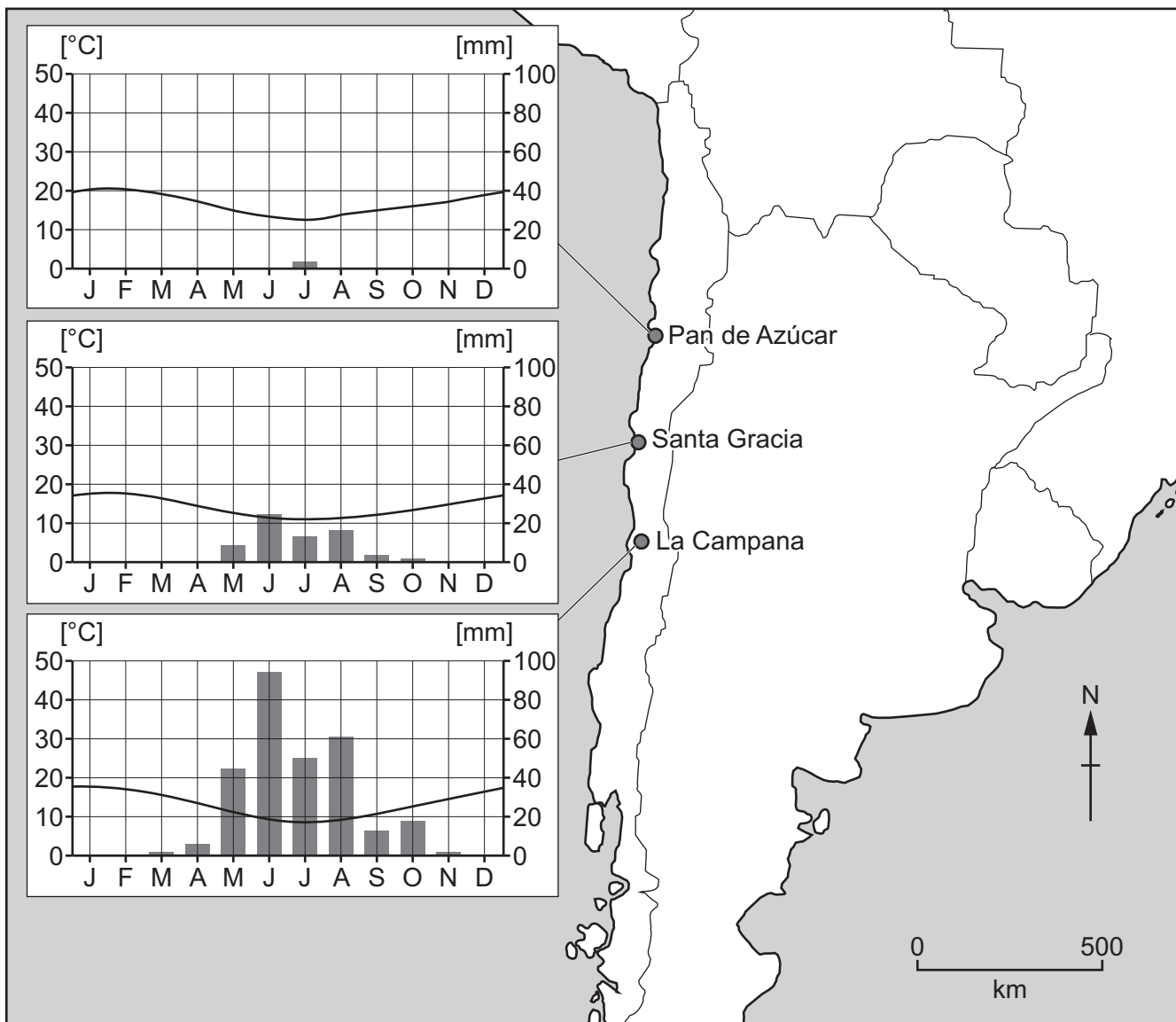


Fig. 3.2

(i) Using Fig. 3.2 **only**, compare the climate along the coast of South America from north to south.

.....

.....

.....

.....

.....

.....

.....

.....

.....

..... [3]

DO NOT WRITE IN THIS MARGIN





(ii) Explain how plants are able to survive in hot desert climates such as those shown in Fig. 3.2.

.....

.....

.....

.....

.....

.....

.....

.....

.....

.....

.....

[5]

DO NOT WRITE IN THIS MARGIN

DO NOT WRITE IN THIS MARGIN

DO NOT WRITE IN THIS MARGIN

DO NOT WRITE IN THIS MARGIN

DO NOT WRITE IN THIS MARGIN





DO NOT WRITE IN THIS MARGIN

DO NOT WRITE IN THIS MARGIN

DO NOT WRITE IN THIS MARGIN

DO NOT WRITE IN THIS MARGIN

DO NOT WRITE IN THIS MARGIN

4 (a) Study Figs. 4.1 and 4.2 (Insert), photographs of an area in Mauritius where coastal erosion has occurred.

(i) What is coastal erosion?

.....
..... [1]

(ii) Which of the following can be seen in Figs. 4.1 and 4.2?
Tick (✓) the **two** answers in the table which are correct.

	Tick (✓)
delta	
natural arch	
sand dune	
stack	
wave-cut platform	

[2]

(iii) Explain how the process of hydraulic action may have eroded the area shown in Figs. 4.1 and 4.2.

.....
.....
.....
.....
.....
.....
..... [3]

(iv) Describe the problems caused by coastal erosion for people living along a coast.

.....
.....
.....
.....
.....
.....
.....
..... [4]





(b) Study Fig. 4.3 (Insert) a photograph of a mangrove swamp.

(i) Describe **three** features of the mangrove swamp shown in Fig. 4.3.

1

.....

2

.....

3

.....

[3]

(ii) Explain the importance of mangrove swamps for people and the natural environment.

.....

.....

.....

.....

.....

.....

.....

.....

.....

.....

.....

[5]





Section C

Answer **one** question from this section.

5 (a) Study Figs. 5.1 and 5.2 (Insert), maps showing information about the iron and steel industry in China in 1950 and 2010.

(i) The iron and steel industry processes iron ore using coal as the fuel source.

What is meant by a *processing* industry?

.....
..... [1]

(ii) Using Fig. 5.1 **only**, identify which of the following statements are true about the location of iron and steel works in 1950.

Tick (✓) the **two** statements in the table below which are correct.

	Tick (✓)
iron and steel works were mainly located near supplies of iron ore	
iron and steel works were all located next to rivers	
iron and steel works were all located next to coal mines	
most iron and steel works were clustered together	
most iron and steel works were located on the coast	

[2]

(iii) Using Figs 5.1 and 5.2 **only**, describe the changes in the iron and steel industry between 1950 and 2010.

.....
.....
.....
.....
.....
..... [3]

DO NOT WRITE IN THIS MARGIN





(iv) Fig. 5.2 shows that Shanghai, with a population of 27 million, is important for the iron and steel industry.

Suggest reasons why Shanghai is a suitable location for the iron and steel industry.

.....

.....

.....

.....

.....

.....

.....

.....

..... [4]

DO NOT WRITE IN THIS MARGIN





(b) Study Fig. 5.3, information showing impacts of the iron and steel industry on the atmosphere.

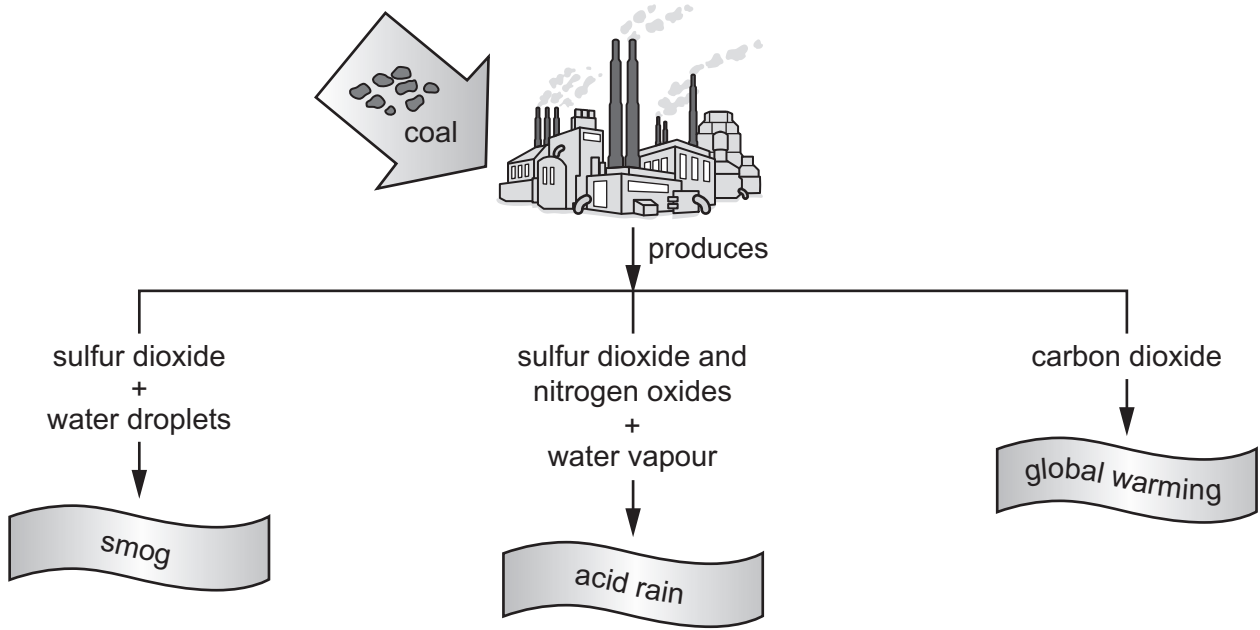


Fig. 5.3

(i) Using Fig. 5.3 **only**, state **three** ways that the natural environment is at risk from the iron and steel industry.

- 1
- 2
- 3

[3]

(ii) Explain what can be done to reduce the environmental risks of industries, such as the iron and steel industry.

.....

.....

.....

.....

.....

.....

.....

.....

.....

.....

.....

.....

.....

.....

.....

.....

.....

.....

.....

.....

.....

.....

[5]





(c) In many areas, **tourism** is an important economic activity.

For a named area you have studied where tourism is important, describe the problems it causes for local people.

Name of area

Dotted lines for writing the answer.

[7]

[Total: 25]

DO NOT WRITE IN THIS MARGIN





6 (a) Study Figs. 6.1 and 6.2 (Insert).

Fig. 6.1 is a map showing agricultural land use in Mauritius.
Fig. 6.2 is a photograph of an agricultural area in Mauritius.

(i) Using Fig. 6.1 **only**, identify the main land use in the north of Mauritius.

..... [1]

(ii) What is meant by the following land uses?

arable land

.....

pasture

.....

[2]

(iii) Using Fig. 6.1 **only**, describe and suggest reasons for the location of the tea factories in Mauritius.

.....

.....

.....

.....

.....

..... [3]

DO NOT WRITE IN THIS MARGIN

DO NOT WRITE IN THIS MARGIN

DO NOT WRITE IN THIS MARGIN

DO NOT WRITE IN THIS MARGIN

DO NOT WRITE IN THIS MARGIN





(iv) State **two** natural factors which farmers using the land shown in **Fig. 6.2** must consider when deciding on their land use. For each factor explain how it influences agricultural land use.

natural factor 1

explanation

.....

.....

natural factor 2

explanation

.....

.....

[4]

DO NOT WRITE IN THIS MARGIN

DO NOT WRITE IN THIS MARGIN

DO NOT WRITE IN THIS MARGIN

DO NOT WRITE IN THIS MARGIN

DO NOT WRITE IN THIS MARGIN





(b) Study Fig. 6.3 (Insert), a photograph of an area where farming is taking place in Indonesia (an LEDC in Asia).

(i) Describe **three** features of the farming which are shown in Fig. 6.3.

1

.....

2

.....

3

.....

[3]

(ii) Explain how farmers in areas such as that shown in Fig. 6.3 can increase their production of crops.

.....

.....

.....

.....

.....

.....

.....

.....

.....

.....

.....

.....

.....

.....

[5]

DO NOT WRITE IN THIS MARGIN

DO NOT WRITE IN THIS MARGIN

DO NOT WRITE IN THIS MARGIN

DO NOT WRITE IN THIS MARGIN

DO NOT WRITE IN THIS MARGIN





(c) For a named country or region you have studied, explain the causes of food shortages.

Name of country or region

.....
.....
.....
.....
.....
.....
.....
.....
.....
.....
.....
.....
.....
.....
.....
.....
.....
.....
.....
.....
.....
.....
.....
.....
.....
.....
.....
.....
.....
.....
.....
.....
.....
.....
.....
.....
.....
.....
.....
.....
.....
.....
.....
.....
.....
.....
.....
.....
.....
.....
.....
.....

[7]

[Total: 25]

DO NOT WRITE IN THIS MARGIN

DO NOT WRITE IN THIS MARGIN

DO NOT WRITE IN THIS MARGIN

DO NOT WRITE IN THIS MARGIN

DO NOT WRITE IN THIS MARGIN





Additional page

If you use the following page to complete the answer to any question, the question number must be clearly shown.

Dotted lines for writing

DO NOT WRITE IN THIS MARGIN





Additional page

If you use the following page to complete the answer to any question, the question number must be clearly shown.

Dotted lines for writing



DO NOT WRITE IN THIS MARGIN



The boundaries and names shown, the designations used and the presentation of material on any maps contained in this question paper/insert do not imply official endorsement or acceptance by Cambridge Assessment International Education concerning the legal status of any country, territory, or area or any of its authorities, or of the delimitation of its frontiers or boundaries.

Permission to reproduce items where third-party owned material protected by copyright is included has been sought and cleared where possible. Every reasonable effort has been made by the publisher (UCLES) to trace copyright holders, but if any items requiring clearance have unwittingly been included, the publisher will be pleased to make amends at the earliest possible opportunity.

To avoid the issue of disclosure of answer-related information to candidates, all copyright acknowledgements are reproduced online in the Cambridge Assessment International Education Copyright Acknowledgements Booklet. This is produced for each series of examinations and is freely available to download at www.cambridgeinternational.org after the live examination series.

Cambridge Assessment International Education is part of Cambridge Assessment. Cambridge Assessment is the brand name of the University of Cambridge Local Examinations Syndicate (UCLES), which is a department of the University of Cambridge.

