



Cambridge IGCSE™ (9–1)

CANDIDATE NAME



CENTRE NUMBER

--	--	--	--	--

CANDIDATE NUMBER

--	--	--	--



GEOGRAPHY

0976/22

Paper 2 Geographical Skills

October/November 2025

1 hour 30 minutes

You must answer on the question paper.

You will need:

Insert (enclosed)	Plain paper
1:50 000 survey map (enclosed)	Protractor
Calculator	Ruler

INSTRUCTIONS

- Answer **all** questions.
- Use a black or dark blue pen. You may use an HB pencil for any diagrams or graphs.
- Write your name, centre number and candidate number in the boxes at the top of the page.
- Write your answer to each question in the space provided.
- Do **not** use an erasable pen or correction fluid.
- Do **not** write on any bar codes.
- If additional space is needed, you should use the lined pages at the end of this booklet; the question number or numbers must be clearly shown.

INFORMATION

- The total mark for this paper is 60.
- The number of marks for each question or part question is shown in brackets [].
- The insert contains additional resources referred to in the questions.

LEDCs – Less Economically Developed Countries
 MEDCs – More Economically Developed Countries

This document has **20** pages. Any blank pages are indicated.



1 Study the map extract for Dublin (Baile Átha Cliath), Ireland. The scale is 1:50 000.

(a) Fig. 1.1 shows some of the features in the east of the map extract.

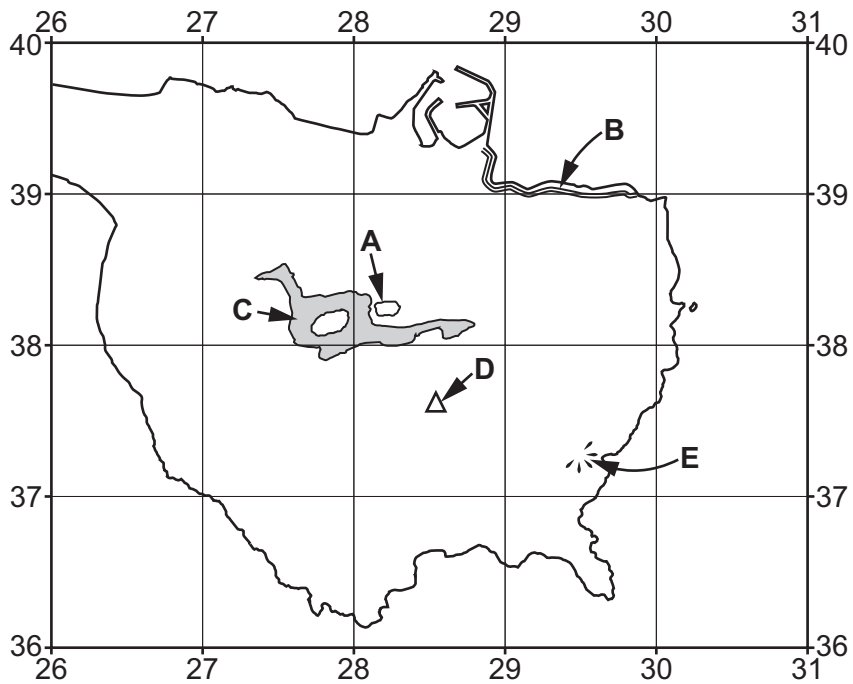


Fig. 1.1

Using the map extract, identify the following features shown in Fig. 1.1:

(i) feature **A**

.....

[1]

(ii) the type of road at **B**

.....

[1]

(iii) the land use at **C**

.....

[1]

(iv) the height above sea level of the triangulation pillar at point **D**.

..... m

[1]





(b) Give the six-figure grid reference of the viewpoint at **E**, shown in Fig. 1.1. Tick (✓) **one** box.

	tick (✓)
292375	
295373	
373295	
375293	

[1]

(c) Locate the stations at Killester, grid reference 1937, and at Donaghmede, grid reference 2340.

(i) What is the compass direction **from** Killester station **to** Donaghmede station?

.....

[1]

(ii) What is the distance along the railway line **from** Killester station **to** Donaghmede station?

..... metres

[1]

(iii) Measure the compass bearing **from** Killester station **to** Donaghmede station.

..... degrees

[1]

(d) Identify **three** leisure facilities shown in the area west of easting 19 and south of northing 38.

1

2

3

[3]

DO NOT WRITE IN THIS MARGIN





(e) Study Figs. 1.2 and 1.3.

Fig. 1.2 shows an area in the centre of Dublin which includes St Brendan’s Hospital.
 Fig. 1.3 shows an area in the north-west of the map extract at Santry (Seantrabh).

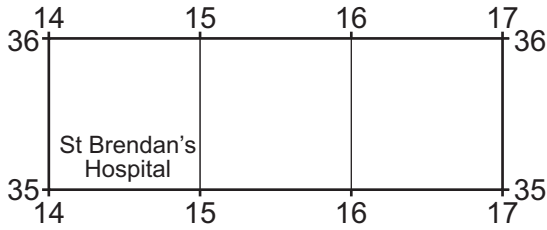


Fig. 1.2

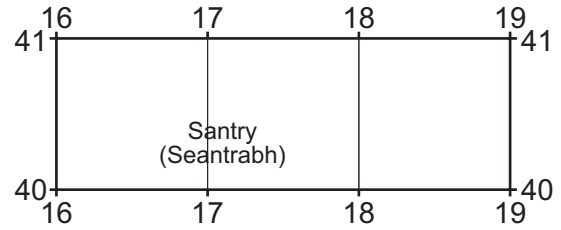


Fig. 1.3

Compare the features of both areas.

Complete the table by putting ticks (✓) in the correct **four** boxes. Use only **one** tick for each row as shown by the example of a railway station.

feature	area in Fig. 1.2 at the centre of Dublin	area in Fig. 1.3 at Santry	both of these areas	neither of these areas
railway station	✓			
motorway				
police station				
post office				
youth hostel				

[4]

(f) Study the site of the power station in grid square 2033.

Give **one** reason why this is a good site for a power station.

.....
 [1]







2 (a) Fig. 2.1 shows information about the population of the Philippines.

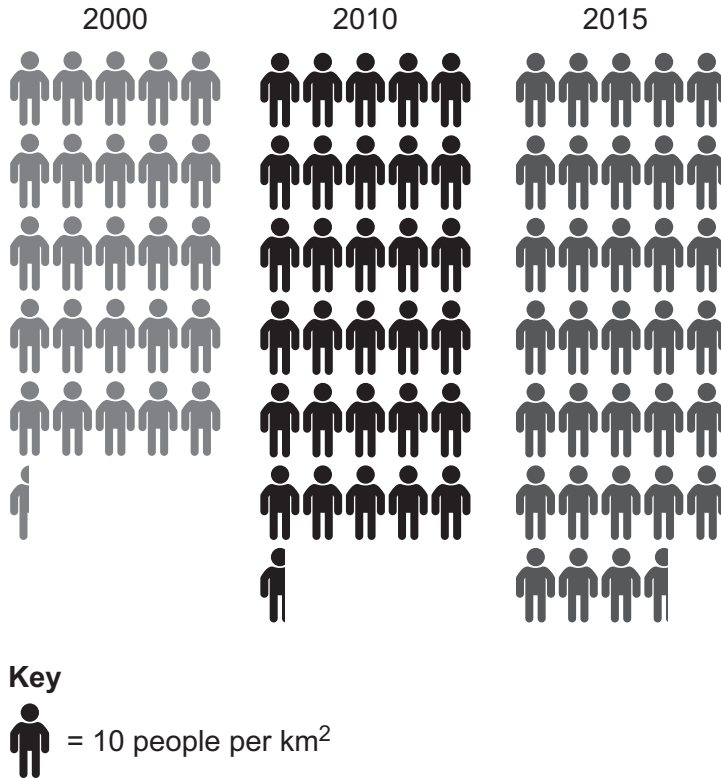


Fig. 2.1

(i) Name the type of graph shown in Fig. 2.1.

..... [1]

(ii) Identify the type of information about population that is shown in Fig. 2.1. Tick (✓) only **one** box.

	tick (✓)
population density	
population size	
population structure	

[1]

(iii) How many people per square kilometre lived in the Philippines in the year 2000?

..... people per km² [1]



DO NOT WRITE IN THIS MARGIN



(b) Fig. 2.2 shows the population distribution in the Philippines.

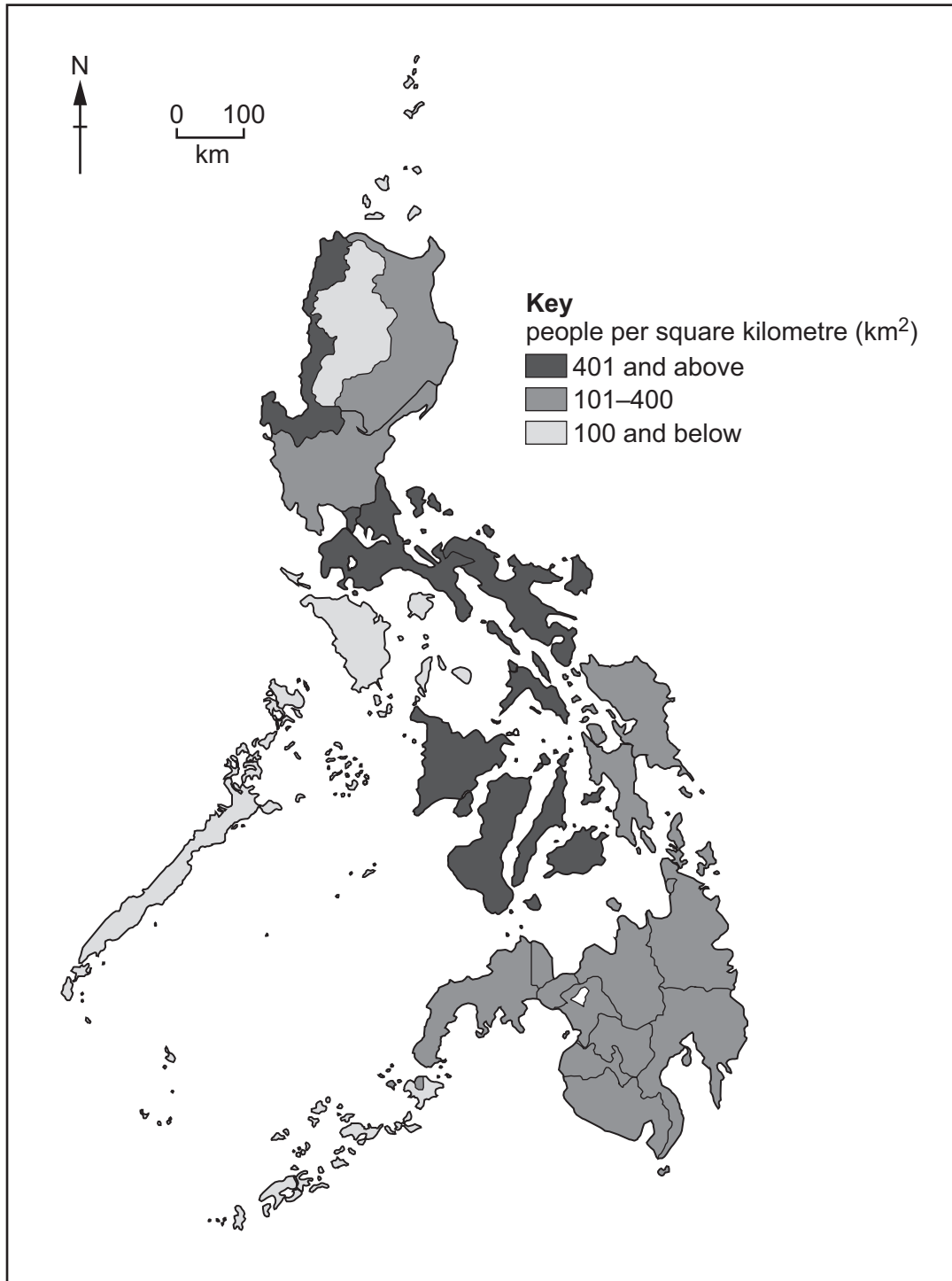


Fig. 2.2





The following table has some statements about the Philippines' population distribution.

Using Fig. 2.2, complete Table 2.1. Tick (✓) **three** correct statements.

Table 2.1

	tick (✓)
All parts of the Philippines are densely populated.	
All parts of the Philippines are sparsely populated.	
The population distribution varies throughout the Philippines.	
The highest population density is in the central areas.	
The highest population density is in the eastern areas.	
The lowest population density is in the southern areas.	
The lowest population density is in the western areas.	

[3]

(c) Fig. 2.3 (Insert) is a relief map of the Philippines.

Using Figs. 2.2 and 2.3, describe the relationship between population distribution and relief in the Philippines.

.....

.....

.....

..... [2]

[Total: 8]



DO NOT WRITE IN THIS MARGIN





- 3 (a) Fig. 3.1 (Insert) shows information about the population living in squatter settlements in urban areas in selected countries in Africa.

Content removed due to copyright restrictions.

- (b) Fig. 3.2 (Insert) shows a squatter settlement in Colombia, an LEDC in South America.

Content removed due to copyright restrictions.



DO NOT WRITE IN THIS MARGIN



4 (a) Fig. 4.1 shows the tectonic plates and volcanic features of part of the USA. Mount St Helens is a volcano which erupted violently on 18 May 1980.

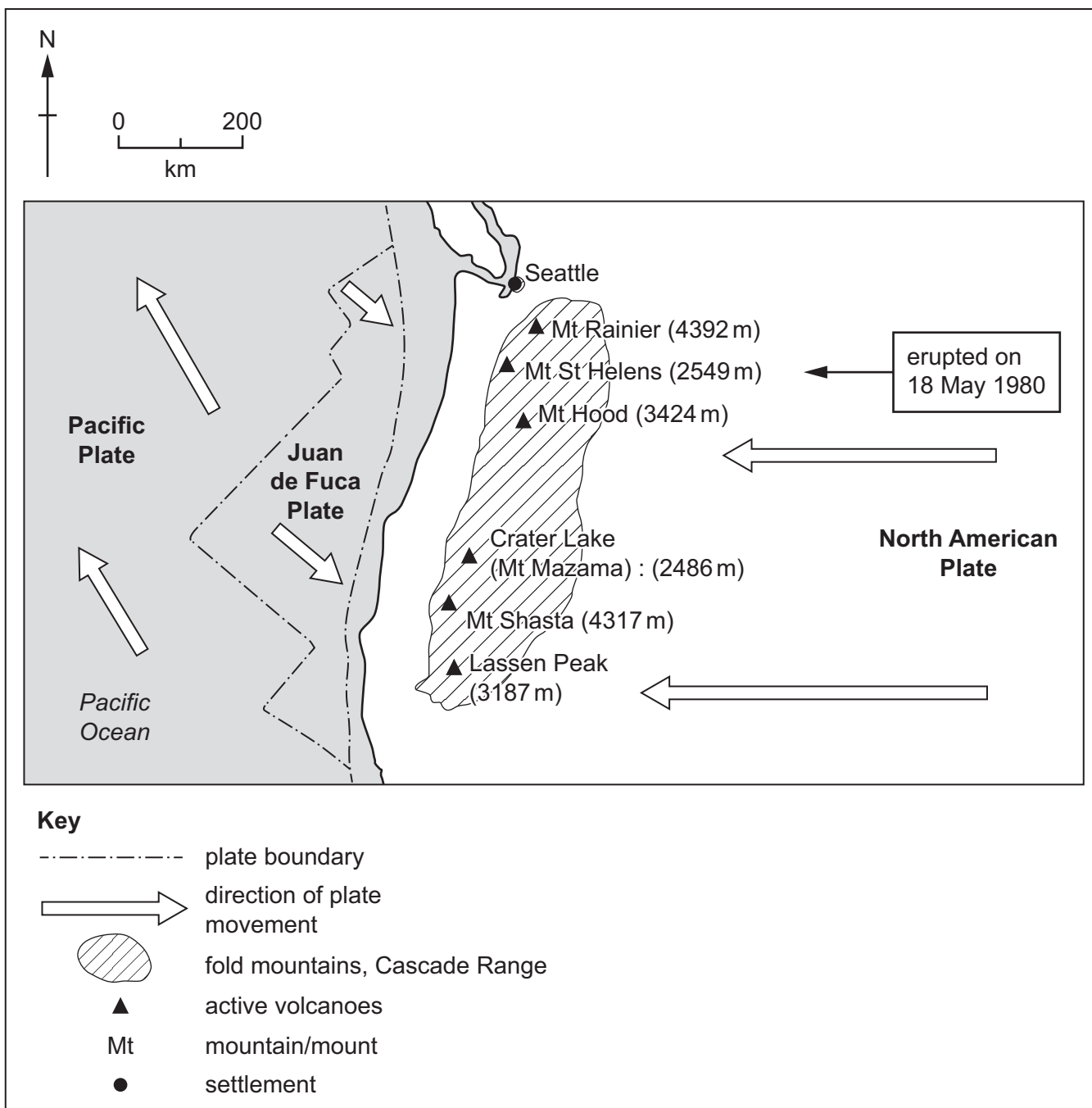


Fig. 4.1

(i) Using Fig. 4.1, describe the location of Mount St Helens.

.....

.....

.....

..... [2]





(ii) Name the type of plate boundary found between the Juan de Fuca and North American plates. Use Fig. 4.1 to explain your answer.

name of type of plate boundary

explanation

..... [2]

(b) Fig. 4.2 (Insert) shows the effects of the Mount St Helens eruption on the surrounding area.

Using Fig. 4.2, describe the impact of the eruption on the **human** environment.

Content removed due to copyright restrictions.

DO NOT WRITE IN THIS MARGIN

DO NOT WRITE IN THIS MARGIN

DO NOT WRITE IN THIS MARGIN

DO NOT WRITE IN THIS MARGIN

DO NOT WRITE IN THIS MARGIN



5 (a) Fig. 5.1 shows changes in the amount of tropical rainforest (million hectares (ha)) in the Brazilian Amazon tropical rainforest (Amazonia) between 1985 and 2018.

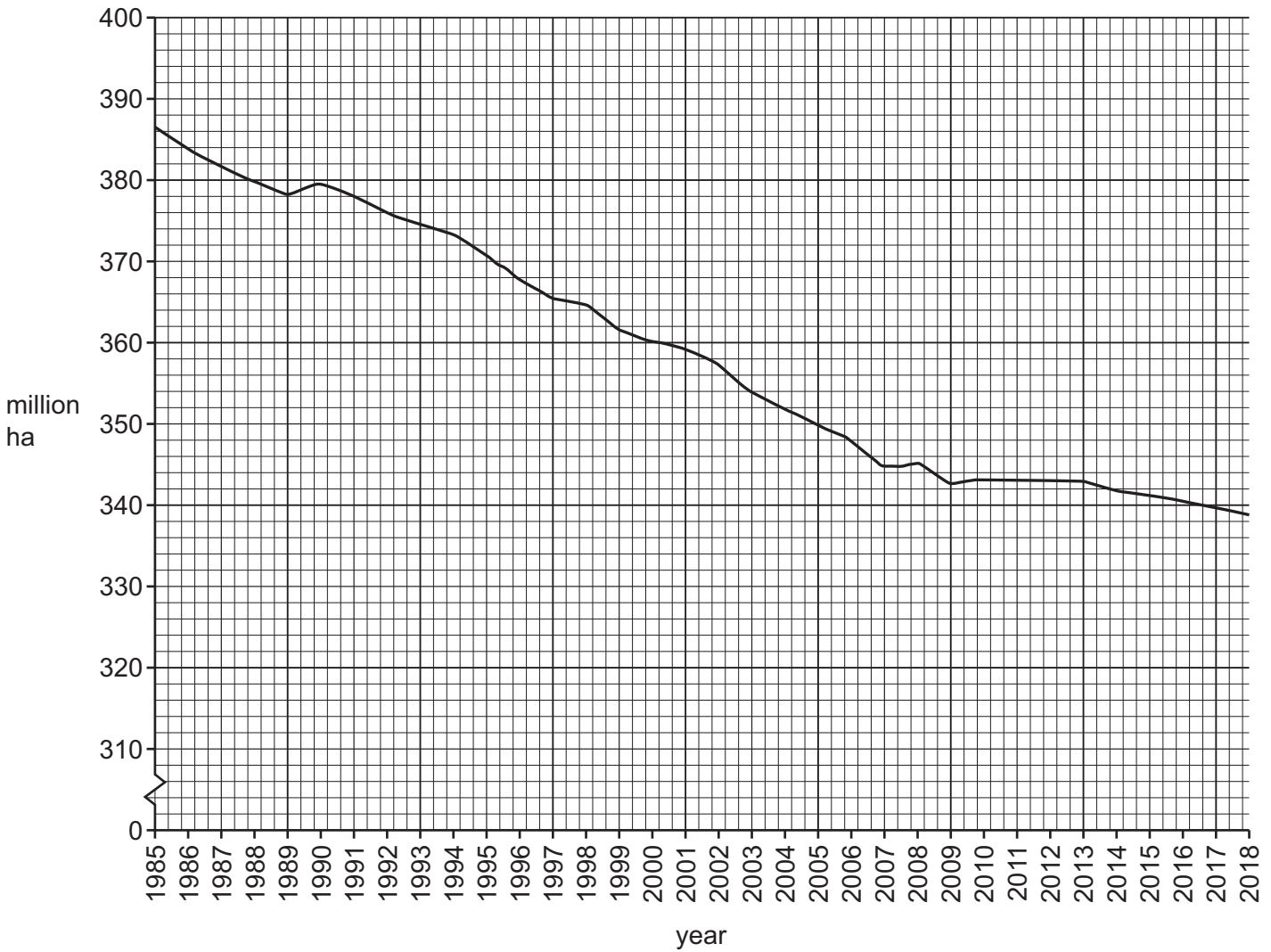


Fig. 5.1

(i) Using Fig. 5.1, state the amount of tropical rainforest in 1985.

..... m ha [1]

(ii) Describe the changes in the amount of tropical rainforest between 1985 and 2018 shown by Fig. 5.1. Do **not** use statistics.

.....
.....
.....
..... [2]



DO NOT WRITE IN THIS MARGIN

DO NOT WRITE IN THIS MARGIN

DO NOT WRITE IN THIS MARGIN

DO NOT WRITE IN THIS MARGIN

DO NOT WRITE IN THIS MARGIN



(iii) Using the information in Table 5.1, calculate the amount of tropical rainforest lost between 1970 and 2018. You should show your calculations.

Table 5.1

tropical rainforest	amount (km ²)
estimated amount in 1970	4 100 000
estimated amount in 2018	3 390 835

..... km²

[2]

(b) Fig. 5.2 shows the major causes of deforestation in the tropical rainforest.

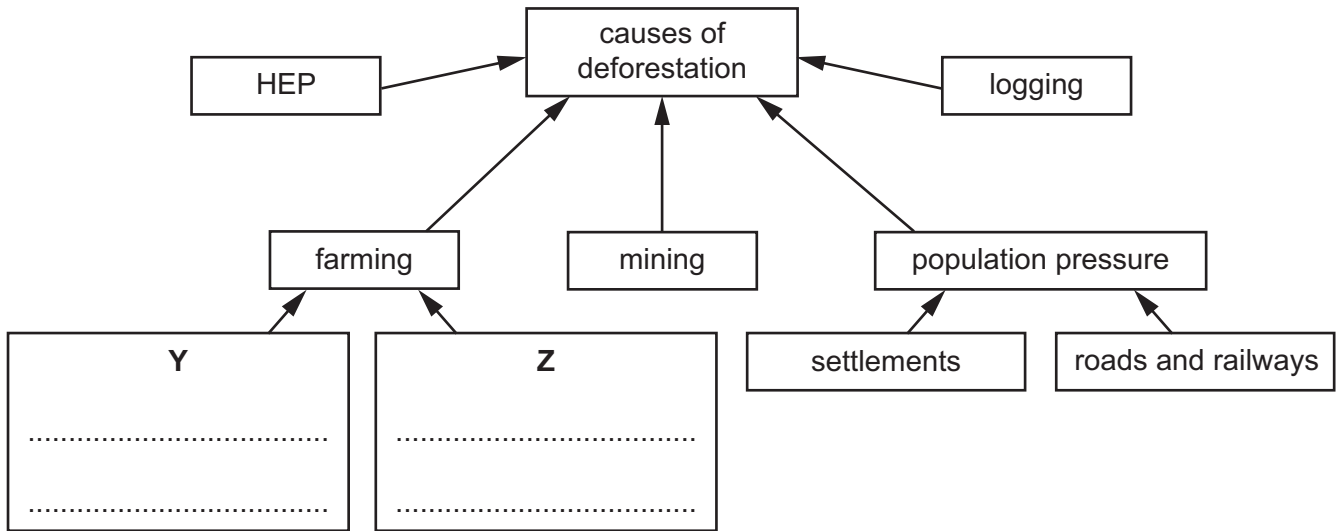


Fig. 5.2

(i) Complete Fig. 5.2 by naming **two** types of farming which lead to deforestation in tropical rainforests. Write your answers in boxes **Y** and **Z** on the diagram. [2]

(ii) Suggest **one** impact of deforestation on the **local natural environment**.

..... [1]

[Total: 8]





6 (a) What is meant by a 'non-renewable resource'?

.....
..... [1]

(b) Figs. 6.1 and 6.2 (Insert) are two examples of **renewable** sources of energy. Identify the type of energy production shown in each.

Fig. 6.1

Fig. 6.2

[2]

(c) (i) Study Table 6.1 which shows the top 10 countries which produced solar energy in 2020.

Table 6.1

country	amount (MW)
China	254 355
USA	75 572
Japan	67 000
Germany	53 783
India	39 211
Italy	21 600
Australia	17 627
Vietnam	16 504
South Korea	14 575
Spain	14 089

Suggest a type of graph you could use to show this data.

..... [1]





(ii) Solar power is not suitable for all countries. Suggest why some people are in favour of developing solar power and other people are against it.

in favour

.....

.....

.....

against

.....

.....

.....

[4]

[Total: 8]

DO NOT WRITE IN THIS MARGIN

DO NOT WRITE IN THIS MARGIN

DO NOT WRITE IN THIS MARGIN

DO NOT WRITE IN THIS MARGIN

DO NOT WRITE IN THIS MARGIN





The boundaries and names shown, the designations used and the presentation of material on any maps contained in this question paper/insert do not imply official endorsement or acceptance by Cambridge Assessment International Education concerning the legal status of any country, territory, or area or any of its authorities, or of the delimitation of its frontiers or boundaries.

Permission to reproduce items where third-party owned material protected by copyright is included has been sought and cleared where possible. Every reasonable effort has been made by the publisher (UCLES) to trace copyright holders, but if any items requiring clearance have unwittingly been included, the publisher will be pleased to make amends at the earliest possible opportunity.

To avoid the issue of disclosure of answer-related information to candidates, all copyright acknowledgements are reproduced online in the Cambridge Assessment International Education Copyright Acknowledgements Booklet. This is produced for each series of examinations and is freely available to download at www.cambridgeinternational.org after the live examination series.

Cambridge Assessment International Education is part of Cambridge Assessment. Cambridge Assessment is the brand name of the University of Cambridge Local Examinations Syndicate (UCLES), which is a department of the University of Cambridge.

