

**1. June/2022/Paper\_11/No.9**

Which row shows the diseases caused by lack of different nutrients in the diet?

	lack of iron	lack of vitamin C	lack of vitamin D
<b>A</b>	scurvy	anaemia	rickets
<b>B</b>	anaemia	rickets	scurvy
<b>C</b>	scurvy	rickets	anaemia
<b>D</b>	anaemia	scurvy	rickets

**2. June/2022/Paper\_11/No.11**

What is an example of assimilation?

- A** absorption of glycerol into lacteals
- B** breakdown of glycogen to glucose in the liver
- C** building of proteins from amino acids
- D** release of a hormone from a gland

**3. June/2022/Paper\_12/No.10**

Sometimes gall bladders become infected and have to be surgically removed.

How will this affect the functioning of the body?

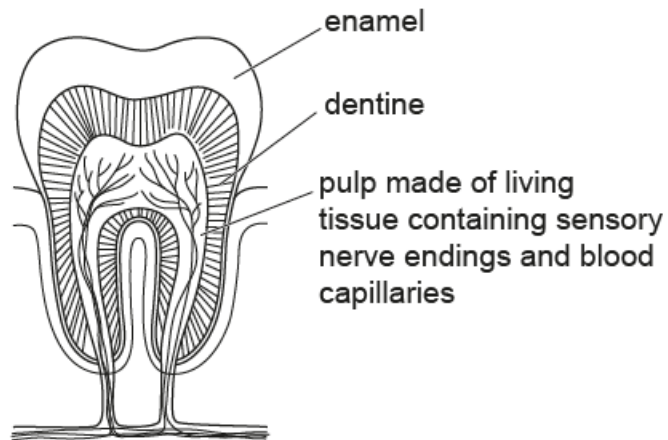
- A** reduce the digestion of carbohydrates
- B** reduce the liver's ability to convert glucose to glycogen
- C** reduce the amount of glycerol absorbed from the alimentary canal
- D** reduce the volume of stored urine

**4. June/2022/Paper\_12/No.11**

What is an example of assimilation?

- A** absorption of glycerol into lacteals
- B** breakdown of glycogen to glucose in the liver
- C** building of proteins from amino acids
- D** release of a hormone from a gland

The diagram shows a section through a molar tooth of a human.



(a) (i) State the function of a molar tooth.

.....  
 ..... [1]

(ii) The pulp is a living tissue.

Describe the movement of molecules in the pulp between the blood capillaries and the cytoplasm of the surrounding cells.

.....  
 .....  
 .....  
 .....  
 ..... [4]

(b) Toothache is caused by inflammation of the pulp tissue and is often a sign of dental decay.

Describe the cause of dental decay and how it can be prevented.

.....

.....

.....

.....

.....

.....

.....

..... [5]

6. June/2022/Paper\_22/No.6(b)

(b) State, for a normal healthy movement of food through the small intestine,

**one** necessary component of a balanced diet

.....

**one** food that is a good source of this component

.....

**one** effect of malnutrition resulting from a lack of this component.

.....

[3]