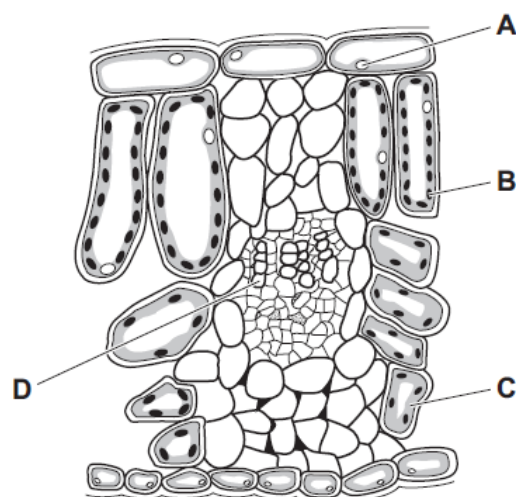


1. Nov/2022/Paper_11, 12/No.1

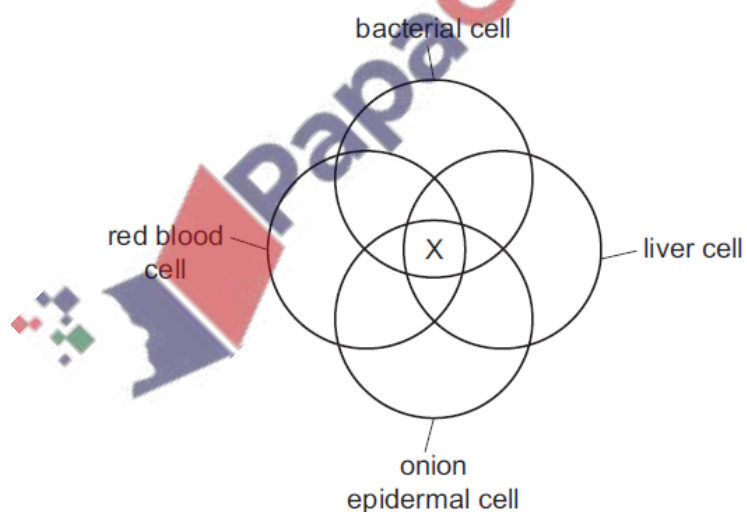
The diagram shows cells from a plant leaf.

Which structure contains a high concentration of magnesium?



2. Nov/2022/Paper_12/No.2

The diagram represents the cell structures of a bacterial cell, a liver cell, an onion epidermal cell and a red blood cell.



Which structure is represented by X?

- A** cell membrane
- B** cellulose cell wall
- C** nucleus
- D** sap vacuole

(d) The skins of the grapes are naturally covered in a white powdery coating. This is wild yeast, a fungus.

(i) List **two** similarities in structure between grape cells and yeast cells.

1

2

[2]

