

1. Nov/2022/Paper_11/No.11

Which function is **not** carried out by the liver?

- A breakdown of alcohol
- B conversion of glycogen to glucose
- C formation of urea
- D secretion of digestive enzymes

2. Nov/2022/Paper_11/No.20

How do the concentrations of oxygen and urea in the renal artery compare to their concentrations in the renal vein?

	oxygen in renal artery	urea in renal artery
A	higher	higher
B	higher	lower
C	lower	higher
D	lower	lower

3. Nov/2022/Paper_11/No.21

Which changes occur when a person walks from a very cold room into a hot room?

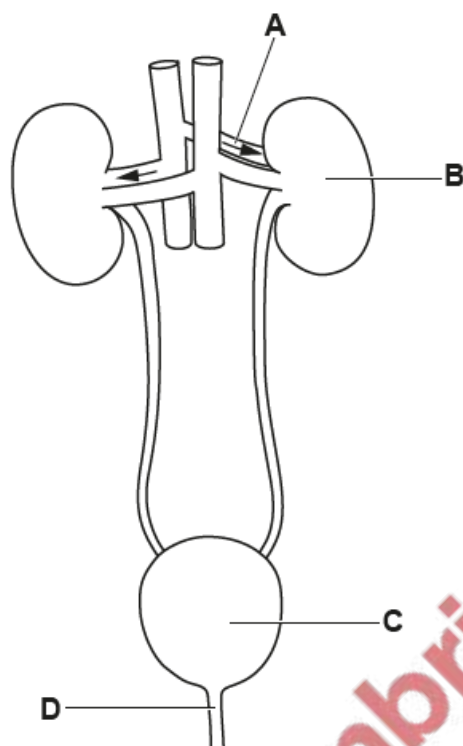
	sweating	skin blood vessels
A	decreases	constrict
B	decreases	dilate
C	increases	dilate
D	increases	constrict

4. Nov/2022/Paper_12/No.20

What are two main functions of the kidneys?

- A to make toxins in the blood harmless and to remove excess salt in the blood
- B to remove excess salt in the blood and to remove urea from the blood plasma
- C to remove urea from the blood plasma and to convert glucose to glycogen
- D to convert glucose to glycogen and to make toxins in the blood harmless

The diagram shows parts of the human body involved in excretion.



- (a) Name the liquid that passes out of the human body through tube **D** and the waste product it contains.

liquid

waste product

[2]

- (b) Describe how parts **A**, **B** and **C** are involved in removing the waste product that passes out of tube **D**.

.....

.....

.....

.....

.....

[3]

[Total: 5]