



Cambridge O Level

CANDIDATE NAME



CENTRE NUMBER

--	--	--	--	--

CANDIDATE NUMBER

--	--	--	--

FASHION & TEXTILES

6130/01

Paper 1 Theory

October/November 2025

2 hours

You must answer on the question paper.

You will need: Ruler
Small piece of fabric, needle and thread

INSTRUCTIONS

- Answer **four** questions in total:
Section A: answer **all** parts of Question 1.
Section B: answer **three** questions.
- Use a black or dark blue pen.
- Write your name, centre number and candidate number in the boxes at the top of the page.
- Write your answer to each question in the space provided.
- Do **not** use an erasable pen or correction fluid.
- Do **not** write on any bar codes.
- You may use an HB pencil for any diagrams or rough working.
- You should illustrate your answers with clear, bold diagrams wherever necessary.
- You may use a needle and thread and a small piece of fabric to help in making drawings of stitches.
- This fabric should **not** be handed in with your work.

INFORMATION

- The total mark for this paper is 100.
- The number of marks for each question or part question is shown in brackets [].

This document has **20** pages. Any blank pages are indicated.





Section A

Answer **all** questions in this section.

1 Fig. 1.1 is a drawing of a skirt.

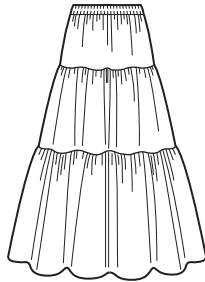


Fig. 1.1

(a) (i) Seersucker is a suitable fabric for the skirt in Fig. 1.1. Describe seersucker fabric.

Appearance

.....

Feel/handle

..... [2]

(ii) Identify the construction method used to make seersucker fabric.

..... [1]

(iii) State **two** reasons why seersucker is a suitable fabric for the style of skirt in Fig. 1.1.

1

.....

2

..... [2]

(iv) Identify **one** vegetable fibre that could be used to make the seersucker fabric for the skirt in Fig. 1.1.

..... [1]

(v) State **two** performance characteristics of the fibre identified in **1(a)(iv)** that make it suitable for the skirt in Fig. 1.1.

1

2

[2]

DO NOT WRITE IN THIS MARGIN

DO NOT WRITE IN THIS MARGIN

DO NOT WRITE IN THIS MARGIN

DO NOT WRITE IN THIS MARGIN

DO NOT WRITE IN THIS MARGIN





(vi) Identify **one** regenerated fibre that could be used to make the seersucker fabric for the skirt in Fig. 1.1.

..... [1]

(b) (i) Suggest **one** trimming that could be used to decorate the skirt in Fig. 1.1.

..... [1]

(ii) State where the trimming suggested in **1(b)(i)** will be placed on the skirt in Fig. 1.1.

.....
..... [1]

(c) State **one** type of pocket that could be used in the skirt in Fig. 1.1 without changing the appearance of the skirt.

..... [1]

(d) (i) The waistline of the skirt in Fig. 1.1 has an elasticated finish. Give **three** advantages of an elasticated waist over other waist finishes.

1

.....

2

.....

3

.....

[3]

(ii) Describe how to thread elastic into the waist casing of the skirt in Fig. 1.1.

.....

..... [1]

(iii) Explain how to complete the waist casing for the skirt in Fig. 1.1 after the elastic has been threaded through.

.....

.....

.....

..... [2]

(e) Identify the production method that would be used to make 500 skirts.

..... [1]



DO NOT WRITE IN THIS MARGIN



(f) State **three** ways a manufacturer can reduce waste when making garments.

1

.....

2

.....

3

.....

[3]

(g) Smart textiles respond to conditions around them. Identify **two** types of smart textiles.

1

2

[2]

(h) Explain the meanings of the following textile terms used in commercial dressmaking patterns.

Textile terms	Explanation of meaning
Straight grain	
Selvedge	
Nap	
Seam allowance	
Multi size patterns	

[5]





- (i) Give step-by-step instructions on how to do silk painting. You may use diagrams to support your answer.

DO NOT WRITE IN THIS MARGIN





(j) Identify **two** ways to add colour to fabric by dyeing.

1

2

[2]

(k) State **three** advantages of using Computer Aided Design (CAD) to develop design ideas.

1

.....

2

.....

3

.....

[3]

[Total: 40]

DO NOT WRITE IN THIS MARGIN

DO NOT WRITE IN THIS MARGIN

DO NOT WRITE IN THIS MARGIN

DO NOT WRITE IN THIS MARGIN

DO NOT WRITE IN THIS MARGIN



* 00080000007 *

DFD



7

BLANK PAGE

DO NOT WRITE IN THIS MARGIN





Section B

Answer **three** questions from this section.

2 (a) (i) Identify **one** synthetic fibre.

..... [1]

(ii) State **two** materials used to make the synthetic fibre identified in 2(a)(i).

1

.....

2

.....

[2]

(iii) Identify **one** non-woven fabric made from synthetic fibres.

..... [1]

(iv) Suggest **two** fabric finishes that would improve the performance of fabrics made from synthetic fibres.

1

2

[2]

(v) State **two** reasons why synthetic fibres are **not** sustainable.

1

.....

2

.....

[2]

(b) Discuss the reasons why synthetic fibres are used to make fabric for sportswear.

.....
.....
.....
.....
.....
.....
.....

DO NOT WRITE IN THIS MARGIN

DO NOT WRITE IN THIS MARGIN

DO NOT WRITE IN THIS MARGIN

DO NOT WRITE IN THIS MARGIN

DO NOT WRITE IN THIS MARGIN





3 (a) Identify the following items of sewing equipment.

Content removed due to copyright restrictions.



* 00080000013 *

DFD



DO NOT WRITE IN THIS MARGIN





4 (a) Identify **four** hand embroidery stitches.

- 1
- 2
- 3
- 4

[4]

Fig. 4.1 is a drawing of a shell.

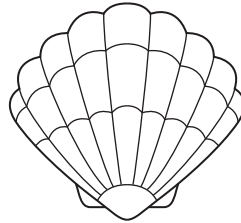


Fig. 4.1

(b) Explain how to quilt the shell design in Fig. 4.1 onto fabric.

-
-
-
-
-
-
-
-
-
-

[4]

(c) Evaluate the suitability of **two** embellishment techniques that could be used to put the shell design in Fig. 4.1 onto a bag.

-
-
-
-
-
-
-
-
-
-





5 Fig. 5.1 is a drawing of a school shirt.

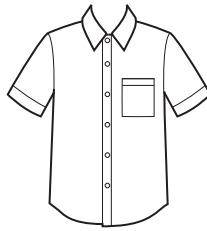


Fig. 5.1

(a) (i) Complete the table below to identify the following features of the school shirt in Fig. 5.1.

Type of sleeve	
Type of pocket	
One component used in the shirt	

[3]

(ii) Give **four** qualities of a fabric suitable for the school shirt in Fig. 5.1.

- 1
- 2
- 3
- 4

[4]

(iii) State **one** essential body measurement to take before buying a pattern to make the school shirt in Fig. 5.1.

..... [1]

(b) Discuss the advantages and disadvantages of making a school shirt instead of buying a ready-made school shirt.

.....

.....

.....

.....

.....

.....





DO NOT WRITE IN THIS MARGIN

DO NOT WRITE IN THIS MARGIN

DO NOT WRITE IN THIS MARGIN

DO NOT WRITE IN THIS MARGIN

DO NOT WRITE IN THIS MARGIN

Permission to reproduce items where third-party owned material protected by copyright is included has been sought and cleared where possible. Every reasonable effort has been made by the publisher (UCLES) to trace copyright holders, but if any items requiring clearance have unwittingly been included, the publisher will be pleased to make amends at the earliest possible opportunity.

To avoid the issue of disclosure of answer-related information to candidates, all copyright acknowledgements are reproduced online in the Cambridge Assessment International Education Copyright Acknowledgements Booklet. This is produced for each series of examinations and is freely available to download at www.cambridgeinternational.org after the live examination series.

Cambridge Assessment International Education is part of Cambridge Assessment. Cambridge Assessment is the brand name of the University of Cambridge Local Examinations Syndicate (UCLES), which is a department of the University of Cambridge.

