



# Cambridge O Level

CANDIDATE  
NAME

CENTRE  
NUMBER

--	--	--	--	--

CANDIDATE  
NUMBER

--	--	--	--



**BIOLOGY**

**5090/22**

Paper 2 Theory

**October/November 2022**

**1 hour 45 minutes**

You must answer on the question paper.

No additional materials are needed.

## INSTRUCTIONS

- Section A: answer **all** questions.
- Section B: answer **all** questions.
- Section C: answer **either** Question 8 **or** Question 9.
- Use a black or dark blue pen. You may use an HB pencil for any diagrams or graphs.
- Write your name, centre number and candidate number in the boxes at the top of the page.
- Write your answer to each question in the space provided.
- Do **not** use an erasable pen or correction fluid.
- Do **not** write on any bar codes.
- You may use a calculator.
- You should show all your working and use appropriate units.

## INFORMATION

- The total mark for this paper is 80.
- The number of marks for each question or part question is shown in brackets [ ].

This document has **20** pages. Any blank pages are indicated.

## Section A

Answer **all** questions in this section.

Write your answers in the spaces provided.

- 1 Organs in the human body produce substances which have specific functions.

Draw lines to link each organ with the substance it produces **and** to link each substance with the description of its function.

One line has been drawn for you.

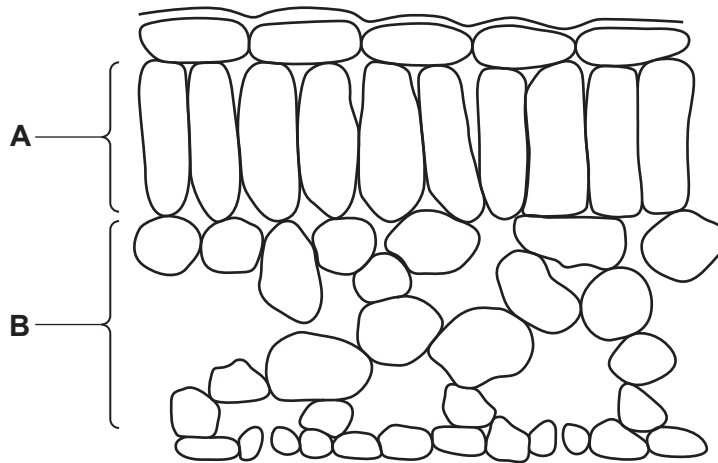
Draw **five more** lines.

organ	substance produced	function of substance
adrenal gland	lipase	emulsification of fats in the small intestine
pancreas	bile	conversion of glycogen to glucose
liver	adrenaline	chemical digestion of fats

The table consists of three columns: 'organ', 'substance produced', and 'function of substance'. The rows are: 1. adrenal gland, lipase, emulsification of fats in the small intestine; 2. pancreas, bile, conversion of glycogen to glucose; 3. liver, adrenaline, chemical digestion of fats. A line is drawn from the 'adrenal gland' box to the 'adrenaline' box.

[5]

2 The diagram shows a cross-section through a leaf when viewed using a light microscope.

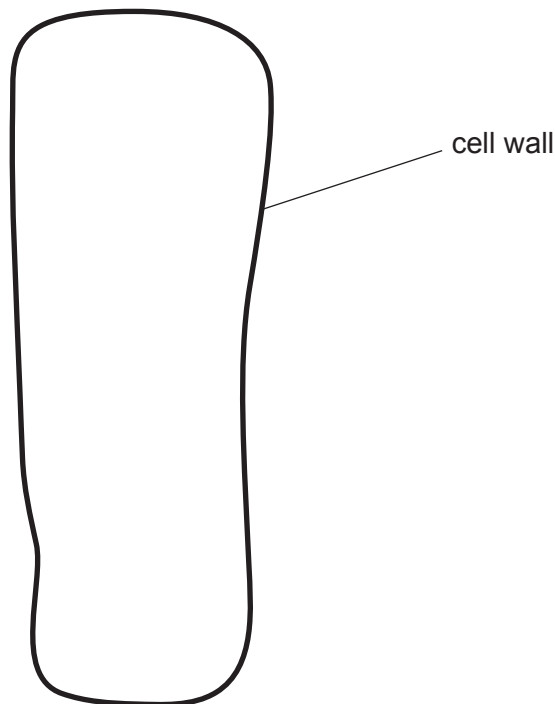


(a) (i) State the term used to describe a group of cells, such as those in part **A** or part **B** of the leaf cross-section.

.....

[1]

(ii) The diagram shows an enlargement of one cell from part **A** of the leaf cross-section.



Complete the diagram of the cell by drawing and labelling to show the position of

- **one** chloroplast
- **three** other types of **named** cell component that will be visible.

[4]

(iii) Use a label line on the diagram of the cross-section through a leaf to name and label **one** cell in the lower epidermis that would also contain chloroplasts.

[1]

(b) The cell wall of a plant cell can be removed by treating the cell with a digestive enzyme.

(i) Name the substrate for this enzyme.

..... [1]

(ii) Some plant cells from part **B** of the leaf cross-section were treated with this enzyme and then placed in distilled water on a microscope slide for one hour.

The cells were clearly visible using a light microscope at the start of the hour.

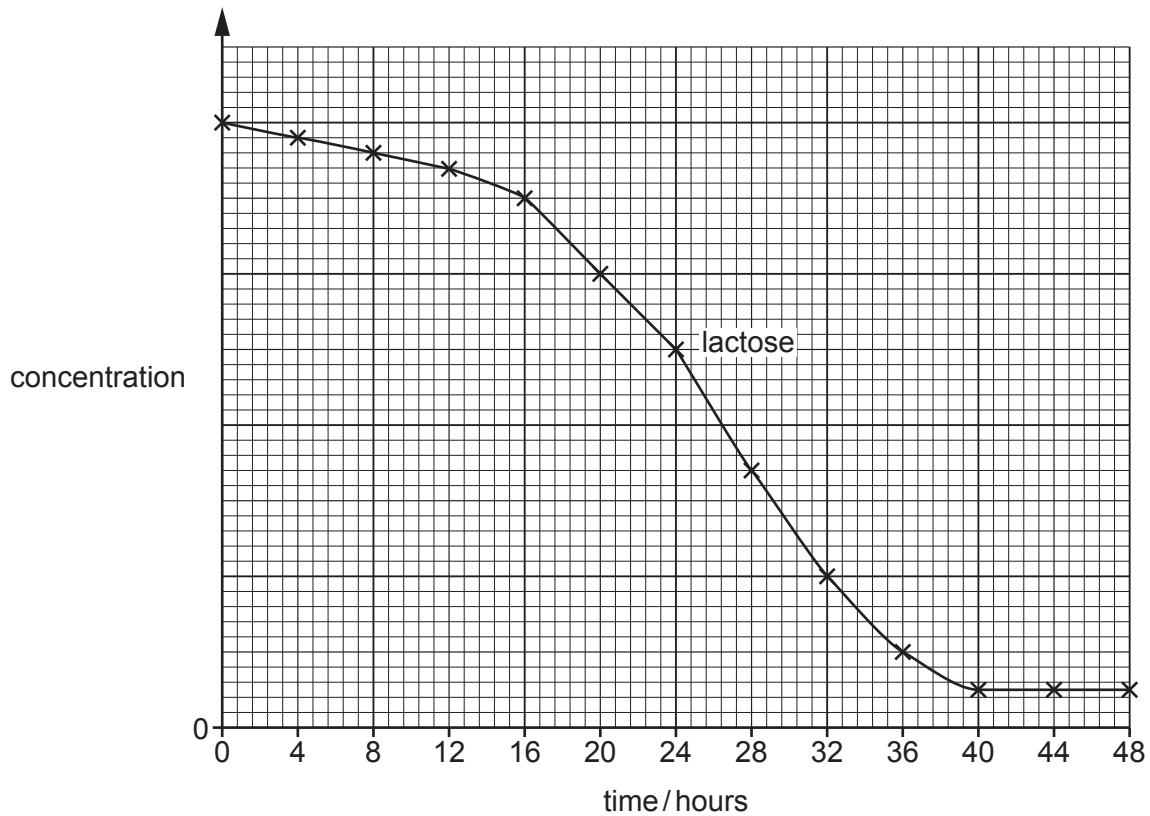
The cells were **not** clearly visible using the same light microscope at the end of the hour.

Explain changes to the structure of the cells that took place between these two observations.

.....  
.....  
.....  
.....  
.....  
.....  
.....  
.....  
..... [4]

[Total: 11]

- 3 The graph shows how the concentration of lactose sugar changes during the formation of yoghurt from milk over a period of 48 hours.



- (a) (i) Name the type of microorganism used in the production of yoghurt.  
 ..... [1]
- (ii) Name the type of cell division that causes the population of this microorganism to increase over the 48-hour period.  
 ..... [1]
- (iii) Name the acid produced by this type of microorganism in the formation of yoghurt.  
 ..... [1]
- (iv) Draw a line on the graph to show how the concentration of this acid will change during the 48-hour period. [2]

(b) Lactose intolerance is a medical condition that results from a genetic change. A person with the condition is unable to produce molecules of the correct enzyme to digest lactose sugar.

(i) Name this type of genetic change and explain how it can result in a person being unable to produce molecules of the correct enzyme.

.....  
.....  
.....  
.....  
.....  
..... [3]

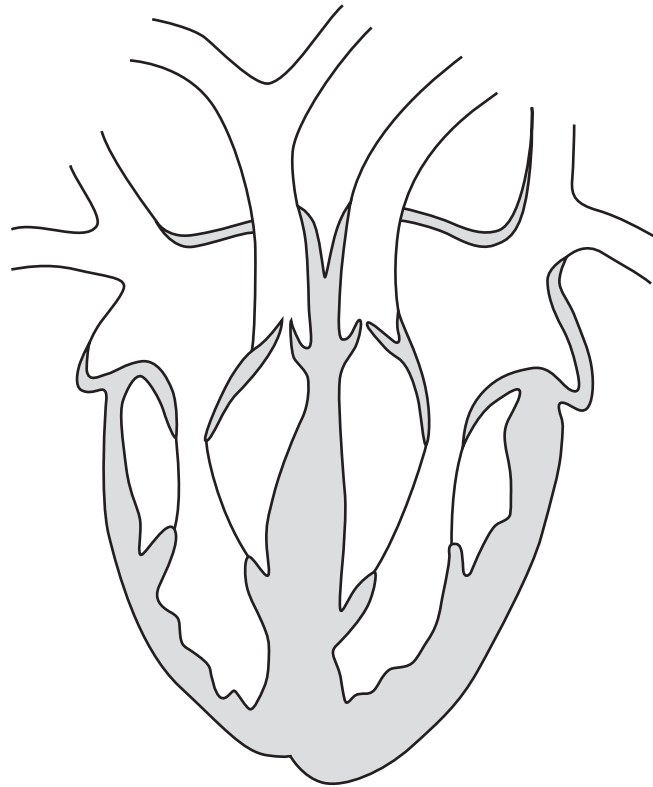
(ii) The low concentration of lactose sugar in yoghurt makes it a better food than milk for a person with lactose intolerance.

Outline the health benefits to some people with lactose intolerance of continuing to include a dairy product such as yoghurt in the diet.

.....  
.....  
.....  
..... [2]

[Total: 10]

- 4 The diagram shows the internal structure of the human heart and associated blood vessels.



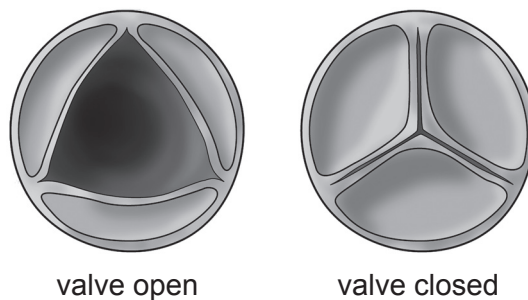
- (a) Name **two** blood vessels shown in the diagram that carry oxygenated blood.

1 .....

2 .....

[2]

- (b) Blood flows through a valve when the left ventricle of the heart contracts. Diagram 1 shows this valve in the open and closed positions.

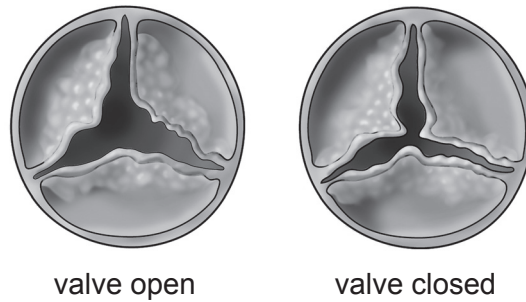


**Diagram 1**

- (i) Label, using the letter **X** on the diagram of the heart, the location of this valve.

[1]

A small number of people develop a medical condition that causes changes to this valve. Diagram 2 shows the same heart valve in the open and closed positions in a person with this condition.



**Diagram 2**

(ii) Explain how this medical condition will affect the flow of blood when the left ventricle contracts and relaxes.

.....  
.....  
.....  
.....  
.....  
.....  
.....  
.....  
..... [4]

(iii) Describe and explain the effect of this condition on the ability of the person to exercise.

.....  
.....  
.....  
.....  
.....  
..... [3]



- (c) It is possible for the valve to be replaced by surgery. The human valve is removed from the patient and can be replaced with a valve containing tissue from another species. This tissue is treated with a chemical to prevent rejection by the human body.

Suggest how the cells of the tissue are modified by the chemical treatment and explain how this will prevent rejection by the human body.

.....

.....

.....

.....

.....

.....

.....

.....

.....

..... [4]

[Total: 14]

5 A group of scientists investigated the total mass of carbon dioxide released when animals and plants are farmed and then used as food for humans.

(a) The total mass of carbon dioxide released for each food in the study included the mass released

- during production of the food by farming
- after the food left the farm and before it was eaten.

Suggest and explain how human activity may result in the release of carbon dioxide **after** food has left the farm on which it was produced.

.....

.....

.....

.....

.....

.....

..... [3]

(b) Some of the results of the investigation are shown in the table.

food produced	mass of CO <sub>2</sub> released per kg of food produced/kg
lamb	39.2
salmon	11.9
chicken	6.9
rice	2.7
beans	2.0
tomatoes	1.1

(i) A farmer decides to change production from lamb to beans.

Calculate the percentage change in carbon dioxide released per kg of food produced.

Space for working.

.....% [3]

- (ii) An increasing number of people in some countries choose to eat a diet consisting **only** of plants.

Use the results in the table and your scientific knowledge to explain how this choice of diet may benefit the environment.

.....

.....

.....

.....

.....

.....

.....

.....

..... [4]

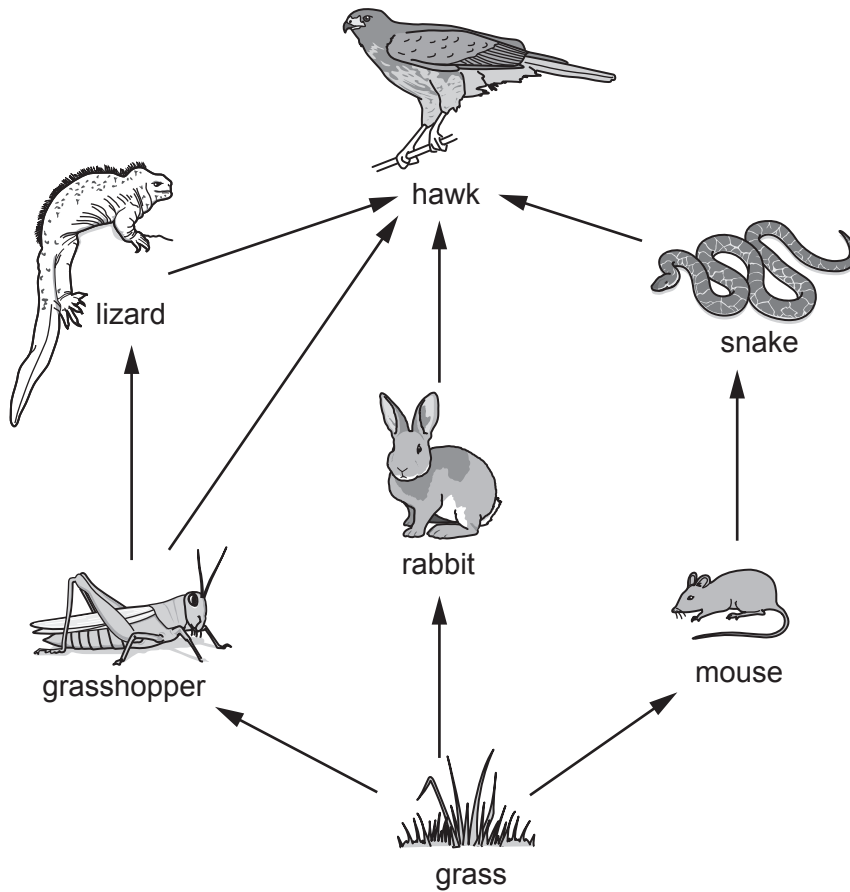
[Total: 10]

## Section B

Answer **both** questions in this section.

Write your answers in the spaces provided.

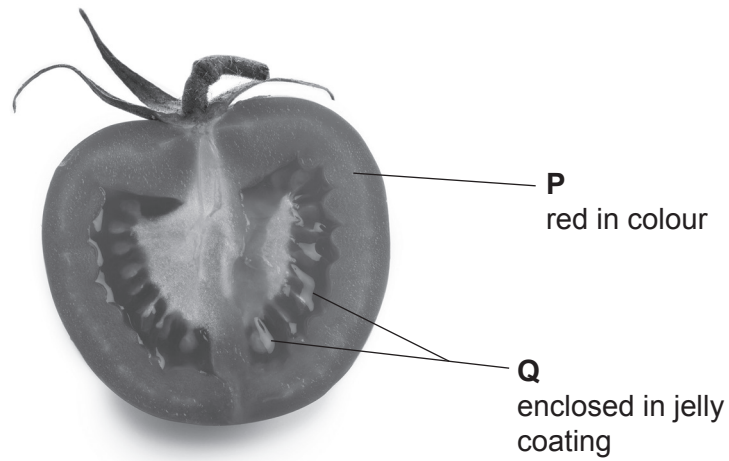
- 6 The diagram shows a food web in an area of grassland.





7 The photograph shows a fruit of the tomato plant.

The fruit has been cut in half to show the structures labelled **P** and **Q**.



(a) Before fertilisation, structures **P** and **Q** in the fruit were structures in a flower of the tomato plant.

Complete the table to name the structures in a flower that have developed into structures **P** and **Q**.

structure in fruit	structure in flower
<b>P</b>	
<b>Q</b>	

[2]

(b) (i) Suggest, with reference to the adaptations shown in the photograph, how the structures labelled **Q** are dispersed by animals.

.....

.....

.....

.....

.....

.....

.....

.....

.....

..... [4]

(ii) Outline advantages to the tomato plant species of **Q** being dispersed far from the parent plant.

.....

.....

.....

.....

.....

.....

.....

.....

.....

.....

..... [4]

[Total: 10]











**BLANK PAGE**

---

Permission to reproduce items where third-party owned material protected by copyright is included has been sought and cleared where possible. Every reasonable effort has been made by the publisher (UCLES) to trace copyright holders, but if any items requiring clearance have unwittingly been included, the publisher will be pleased to make amends at the earliest possible opportunity.

To avoid the issue of disclosure of answer-related information to candidates, all copyright acknowledgements are reproduced online in the Cambridge Assessment International Education Copyright Acknowledgements Booklet. This is produced for each series of examinations and is freely available to download at [www.cambridgeinternational.org](http://www.cambridgeinternational.org) after the live examination series.

Cambridge Assessment International Education is part of Cambridge Assessment. Cambridge Assessment is the brand name of the University of Cambridge Local Examinations Syndicate (UCLES), which is a department of the University of Cambridge.