



UNIVERSITY OF CAMBRIDGE INTERNATIONAL EXAMINATIONS  
General Certificate of Education Ordinary Level

---

**FASHION AND FABRICS**

**6050/01**

Paper 1 Theory

**October/November 2010**

INSERT

**2 hours**

---

**READ THESE INSTRUCTIONS FIRST**

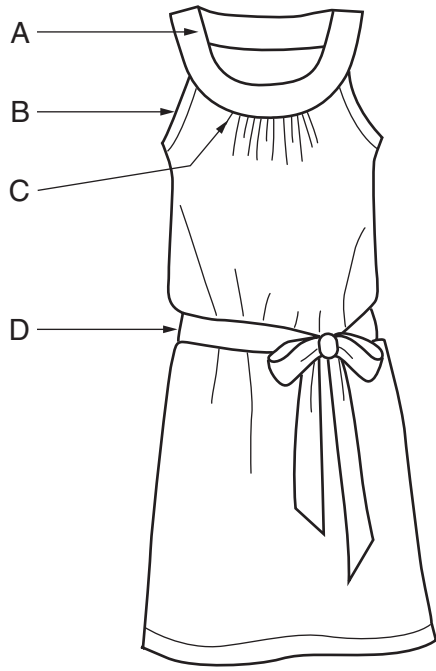
This Insert is for use with Questions **1, 5** and **7**.

---

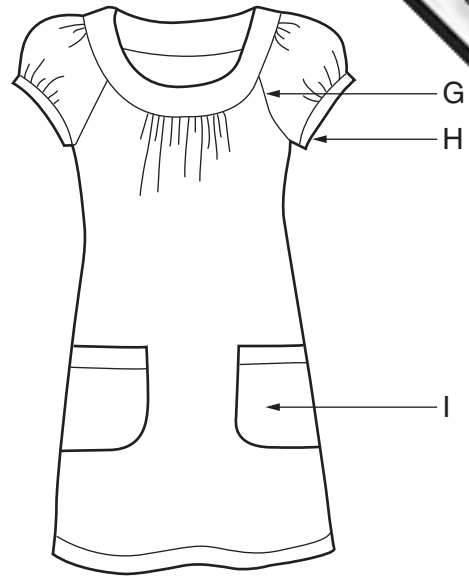
This document consists of **4** printed pages.



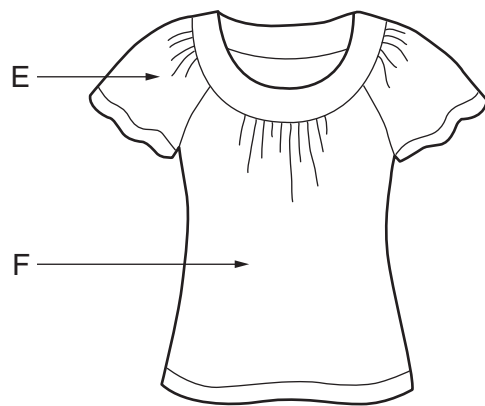
2



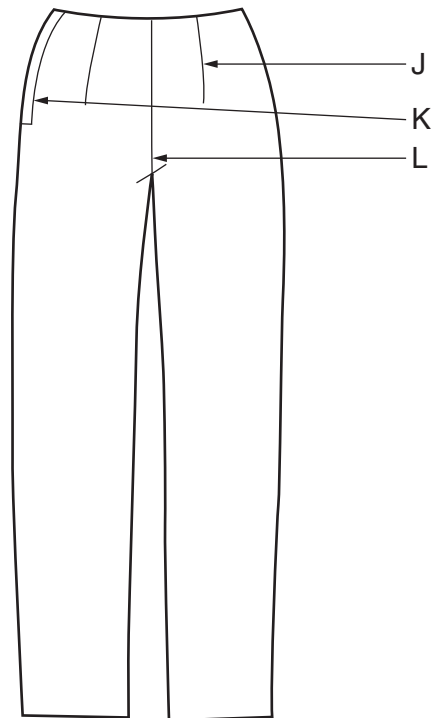
**A**



**B**



**C**



**D**  
(back)

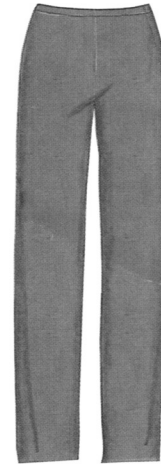
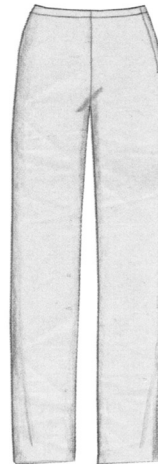
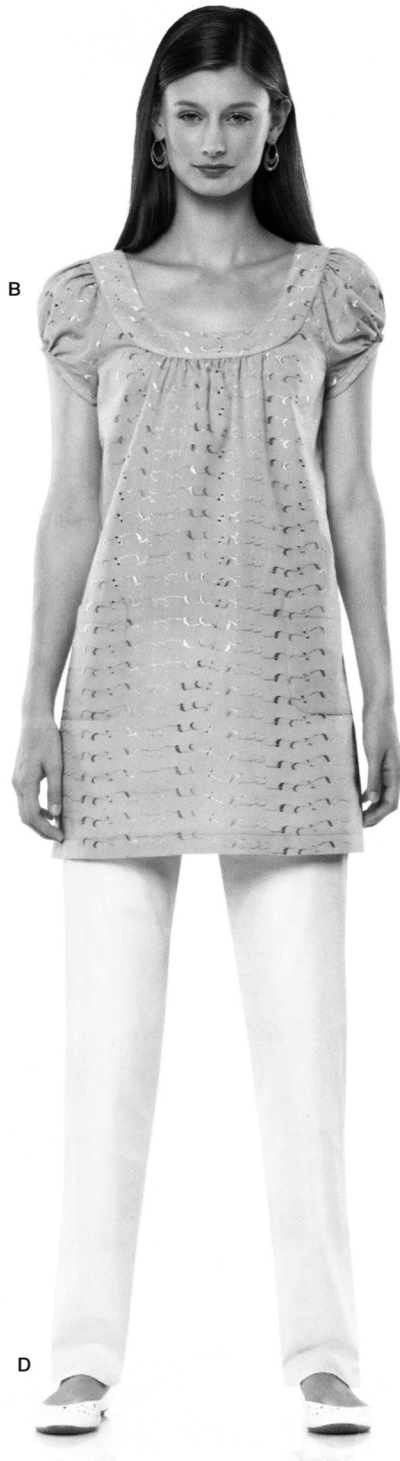
# NEWLOOK®

ENGLISH • FRANÇAIS • ESPAÑOL

**BIN 15 6785**

**SIZE A 6-16**

FR. 34-44 EUR. 32-42

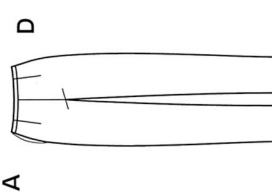
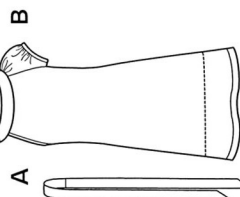
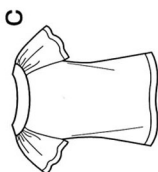


Visit us at  
[www.newlookpatterns.com](http://www.newlookpatterns.com)



## 12 PIECES/PIEZAS

Métrages et instructions de couture en Français à l'intérieur de l'enveloppe.



**6785**  
**SIZE A 6-16**  
 FR. 34-44  
 EUR. 32-42

## MISSES' SIX SIZES IN ONE

Sizes	6	8	10	12	14	16
European Size	32	34	36	38	40	42
Bust	30½	31½	32½	34	36	38
Waist	23	24	25	26½	28	30
Hips	32½	33½	34½	36	38	40
Back-neck to waist	15½	15¾	16	16¼	16½	16¾

<b>A</b>						
45***	2¼	2¼	2¼	2¾	2¾	2¾
60****	1½	1½	1½	1½	1¾	2¾
<b>B</b>						
45***	2	2	2½	2½	2½	2¼
60****	1½	1½	1½	1½	1½	1½
<b>C</b>						
45***	1½	1½	1¾	1¾	1¾	2
60****	1¼	1¼	1¼	1¼	1¼	1¾

**A,B,C Interfacing**- ½ yd. of 22" to 25" lightweight fusible

**D- worn 1" below waist**

45***	2½	2½	2½	2½	2½	2½
60****	1¼	1¼	1¼	1¼	1½	1½

## GARMENT MEASUREMENTS

A,B,C Bust	37½	38½	39½	41	43	45
D Hip	36	37	38	39½	41	43
Finished back length from base of neck:						
A	35½	35¾	36	36¼	36½	36¾
D Side Length	37½	37¾	38	38¼	38½	38¾
A Width	44	45	46	47½	49½	51½
D Leg Width	13	13½	14	14½	15	15½

## SUGGESTED FABRICS

Cotton and Cotton Blends, Linen and Linen Blends. A,B,C also in Eyelet, Silks and Silk Types, Charmeuse, Jacquards, Voile, Gauze, Double Georgette, Jerseys. D also in Pique, Twill. Allow extra fabric for matching plaids or stripes.

## REQUIREMENTS

A: One pkg. of ½" wide single fold bias tape. C: Two ½" buttons. D: One 7" zipper, hook and eye, one pkg. of ½" wide twill tape.

\*without nap \*\*with nap \*\*\*with or without nap

JEUNE FEMME: PATRON SIX TAILLES  
SEÑORITAS: PATRON SEIS TALLAS

Tailles / Tallas	6	8	10	12	14	16
Taille Française	34	36	38	40	42	44
Tallas europeas	32	34	36	38	40	42
Poitrine / Busto	78	80	83	87	92	97
Taille / Cintura	58	61	64	67	71	76
Hanches / Caderas	83	85	88	92	97	102
Dos (encolure à Taille) / Espalda (escote a cintura)	39,5	40	40,5	41,5	42	42,5

<b>A</b>						
115cm***	2,00	2,10	2,10	2,10	2,10	2,20
150cm***	1,30	1,30	1,40	1,40	1,50	2,00

<b>B</b>						
115cm**	1,80	1,90	1,90	1,90	1,90	2,00
150cm***	1,40	1,40	1,50	1,50	1,50	1,50

<b>C</b>						
115cm**	1,50	1,50	1,50	1,60	1,70	1,80
150cm***	1,10	1,10	1,10	1,10	1,20	1,20

**A,B,C Entoilage**- 0.50m de 55cm à 64cm léger thermocollant/A,B,C Entretela- 0.50m de 55cm a 64cm ligera adhesiva

**D- se porte à 2.5cm au-dessous de la taille/Se lleva a 2.5 cm abajo de la cintura**

115cm**	1,90	1,90	1,90	2,00	2,10	2,20
150cm**	1,20	1,20	1,20	1,20	1,30	1,50

## TISSUS SUGGERES

Coton et cotonnades, Lin et mélanges de lin. A,B,C aussi en Dentelle anglaise, Soie et tissus soyeux, Charmeuse, Soie damassée, Voile, Gaze, Crêpe Georgette Double, Jersey fin. D aussi en Piqué, Twill. Prévoyez davantage de tissu pour raccorder les écosais ou rayures.

## MERCERIE

A: Un paquet de ruban de biais simple de 1.3cm de large. C: Deux boutons de 1.3cm. D: Une glissière de 18cm, une agrafe. Un paquet de ruban de talonnette de coton de 1.3cm de large.

## TELAS SUGERIDAS

Algodón y mezclas de algodones, Lino y mezclas de lino. A,B,C también en Bordado inglés, Sedas y telas sedosas, Charmeuse, Seda adamascada, Velo, Gasa, Crepé Georgette Doble, Mallas finas. D También en Piqué, Twill. Se necesita tela adicional para casar cuadros o rayas.

## MERCERIA

A: Un paquete de cinta de bias de 1.3cm de ancho. C: Dos botones de 1.3cm. D: Una cremallera de 18cm, un corchete, un paquete de galón asargado de 1.3cm de ancho.

\*sans sens \*\*avec sens \*\*\*avec ou sans sens

\*Sin pelusa \*\*con pelusa \*\*\*con