



UNIVERSITY OF CAMBRIDGE INTERNATIONAL EXAMINATIONS
International General Certificate of Secondary Education

CANDIDATE
NAME

CENTRE
NUMBER

| | | | | |
|--|--|--|--|--|
| | | | | |
|--|--|--|--|--|

CANDIDATE
NUMBER

| | | | |
|--|--|--|--|
| | | | |
|--|--|--|--|

BIOLOGY

0610/23

Paper 2 Core

October/November 2012

1 hour 15 minutes

Candidates answer on the Question Paper.

No Additional Materials are required.

READ THESE INSTRUCTIONS FIRST

Write your Centre number, candidate number and name on all the work you hand in.

Write in dark blue or black pen.

You may use a pencil for any diagrams or graphs.

Do not use staples, paper clips, highlighters, glue or correction fluid.

DO NOT WRITE IN ANY BARCODES.

Answer **all** questions.

Electronic calculators may be used.

You may lose marks if you do not show your working or if you do not use appropriate units.

At the end of the examination, fasten all your work securely together.

The number of marks is given in brackets [] at the end of each question or part question.

For Examiner's Use

| | |
|--------------|--|
| 1 | |
| 2 | |
| 3 | |
| 4 | |
| 5 | |
| 6 | |
| 7 | |
| 8 | |
| 9 | |
| Total | |

This document consists of **19** printed pages and **1** blank page.



1 Animals without backbones are classified into a number of groups.

Draw **one** line from each of the named groups to its description.

For
Examiner's
Use

| group | description |
|-----------|---|
| annelids | hard, jointed exoskeleton, three pairs of jointed legs |
| insects | long cylindrical body, segmented, has bristles but no legs |
| molluscs | long cylindrical body, not segmented, no legs |
| myriapods | has soft body, head and muscular foot, most have a hard shell |
| nematodes | exoskeleton, segmented body, jointed legs on each segment |

[4]

[Total: 4]

2 (a) (i) State what is meant by the term *excretion*.

For
Examiner's
Use

.....

 [2]

(ii) Name the main substance that is excreted in expired air.

..... [1]

(iii) Urine contains water. Name **two** other excretory products found in the urine of a healthy person.

..... and [1]

(b) Fig. 2.1 shows the kidneys and associated structures.

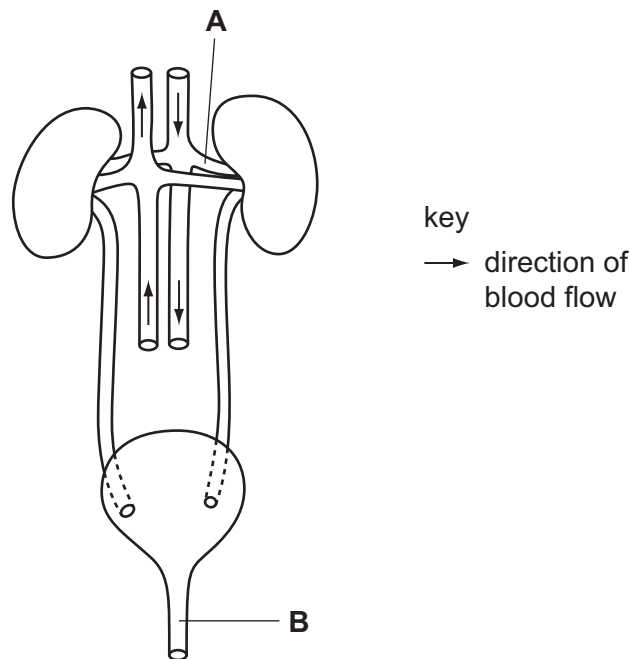


Fig. 2.1

Name the structures labelled **A** and **B**.

A

B [2]

3 (a) Fig. 3.1 shows the fruits of two species of plants.

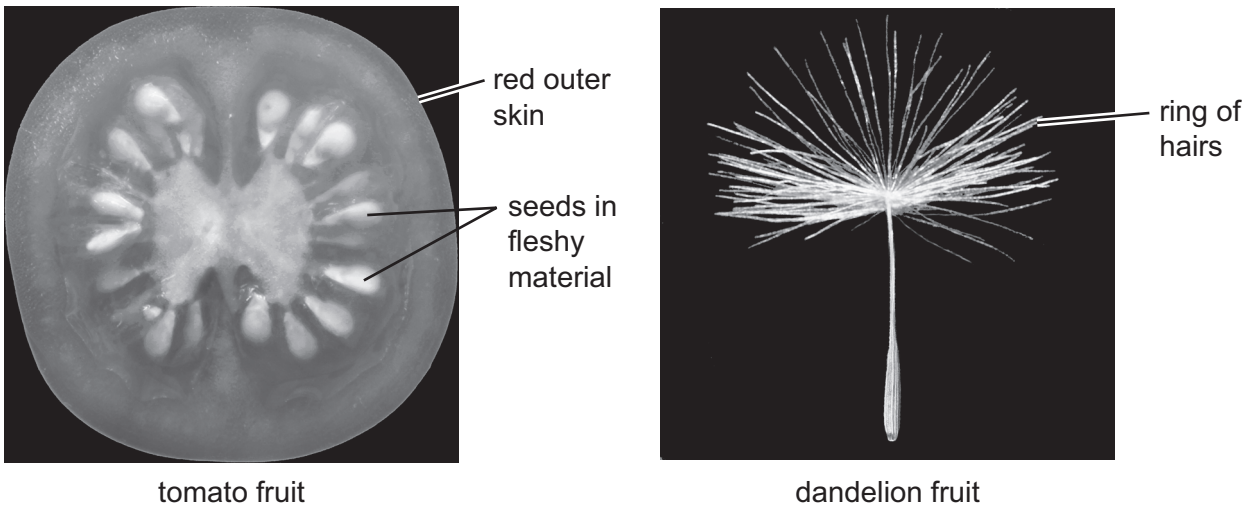


Fig. 3.1

Suggest and explain how seeds from each of these two plants are transported away from the parent plant.

tomato

.....

.....

..... [2]

dandelion

.....

.....

..... [2]

(b) Explain why it is important that seeds are transported well away from the parent plant.

.....

.....

.....

.....

.....

..... [3]

[Total: 7]

For Examiner's Use

- 4 Table 4.1 shows the percentage of each of the gases present in the atmosphere and in expired air.

For
Examiner's
Use

Table 4.1

| gas | % of atmospheric air | % of expired air |
|----------------|----------------------|------------------|
| carbon dioxide | 0.04 | 4.00 |
| oxygen | 21.00 | 16.00 |
| X | 78.00 | 78.00 |
| other gases | 0.96 | 2.00 |

- (a) Identify gas **X**.

..... [1]

- (b) Fig. 4.1 shows the volume of air exchanged during each breath at rest and during vigorous exercise.

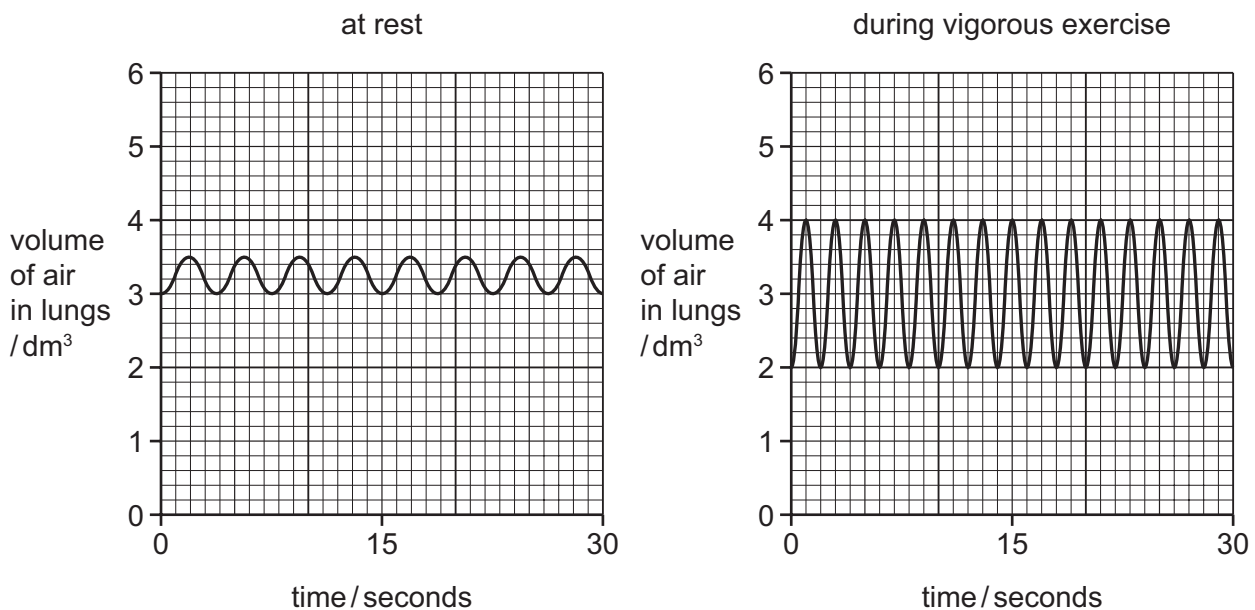


Fig. 4.1

- (i) State the volume of air inhaled in each breath at rest.

..... dm³ [1]

(ii) State how many breaths are taken in one minute at rest.

..... [1]

(iii) Calculate the volume of air exchanged in one minute at rest.

..... dm³ [1]

(iv) Using information from Table 4.1, calculate the volume of oxygen absorbed in one minute at rest.

Show your working.

..... dm³ [2]

(c) (i) Describe what happens to both the rate and depth of breathing during vigorous exercise.

..... [1]

(ii) Suggest why the changes in the rate and depth of breathing are important for the person doing exercise.

..... [2]

(iii) Suggest why the person's heart rate also changes during exercise.

..... [3]

[Total: 12]

5 Fig. 5.1 shows a food web that is part of an ecosystem in the Amazon rainforest.

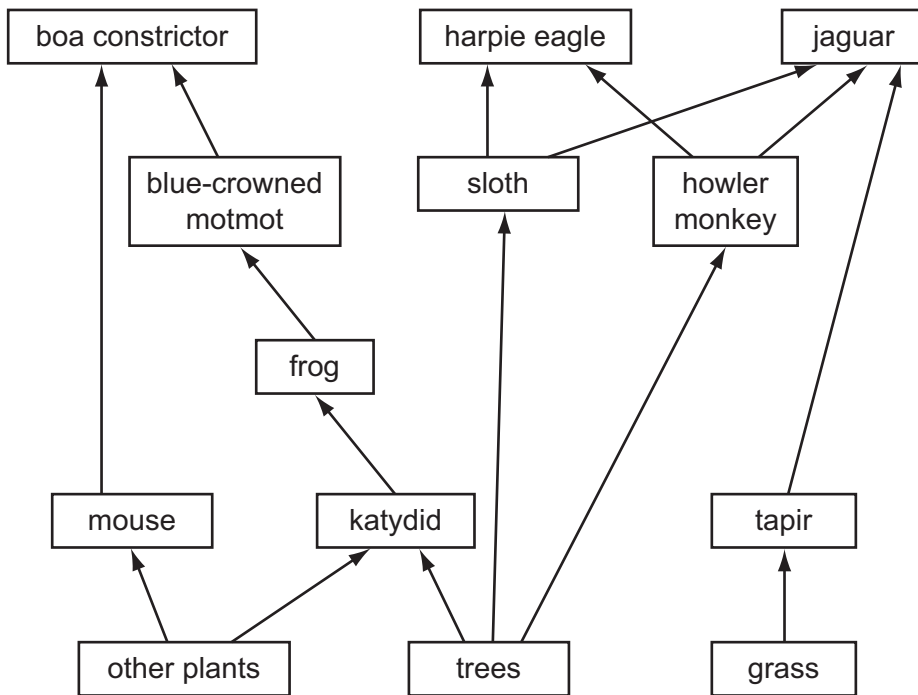


Fig. 5.1

(a) (i) Explain why the whole food web depends on the producers such as the grass and trees.

.....

.....

.....

.....

.....

.....

..... [3]

(ii) Name **two** herbivores in this food web.

1

2 [1]

(iii) State the trophic level of the frog.

..... [1]

For
Examiner's
Use

(iv) Complete a food chain of five stages from this food web.

For
Examiner's
Use



[2]

(b) Jaguars are big cats that are hunted for their fur.

Suggest and explain how the numbers of eagles might be affected if the jaguars were removed from this food web.

.....
.....
.....
..... [2]

(c) Suggest how humans who live in the Amazon rainforest might be affected if large areas of trees are removed.

.....
.....
.....
..... [2]

[Total: 11]

6 Fig. 6.1 shows a human fetus developing inside a uterus.

For
Examiner's
Use

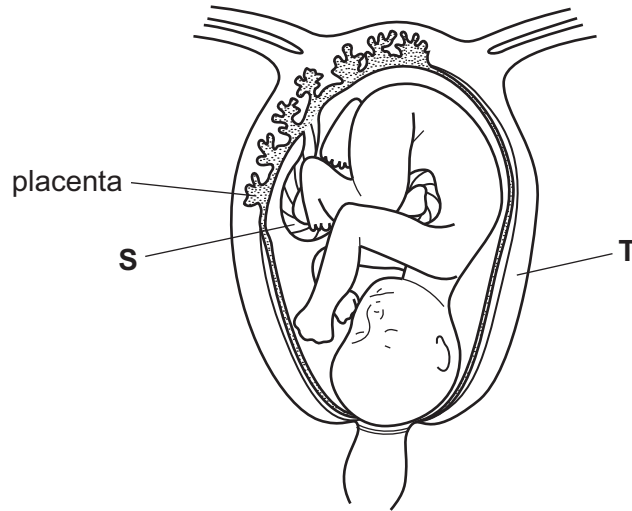


Fig. 6.1

(a) (i) Name the structures labelled **S** and **T**.

S

T [1]

(ii) Explain the function of the placenta in the healthy development of the fetus.

.....
.....
.....
.....
.....
..... [3]

(iii) The blood supply of the mother and of the fetus are kept separate from each other at the placenta.

*For
Examiner's
Use*

Suggest and explain two reasons why these two blood systems must not be joined to each other.

1

.....

.....

.....

2

.....

.....

..... [4]

7 Fig. 7.1 shows the water cycle.

For
Examiner's
Use

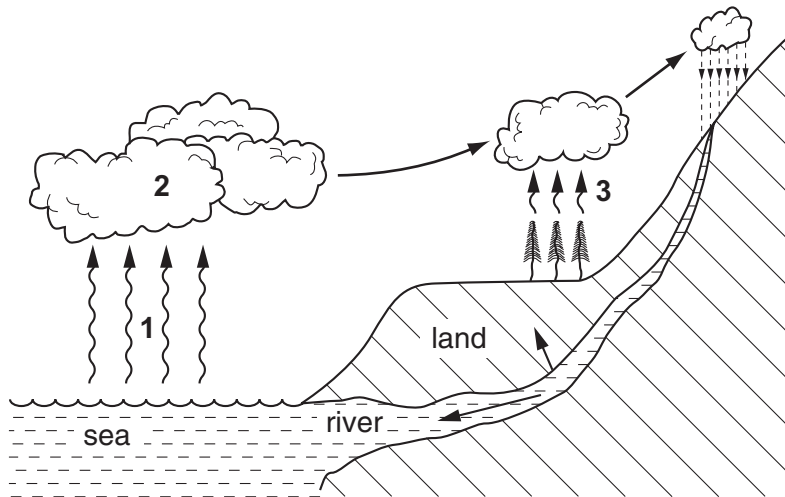


Fig. 7.1

(a) Name the processes that are happening at points 1, 2 and 3 in the water cycle.

- 1 [3]
- 2
- 3

(b) On mountains, rainwater drains over the surface and sinks into the soil.

Explain why the soil on mountainsides may be poor for agriculture.

-
-
-
- [2]

[Total: 5]

8 Fig. 8.1 shows a section through a leaf.

For
Examiner's
Use

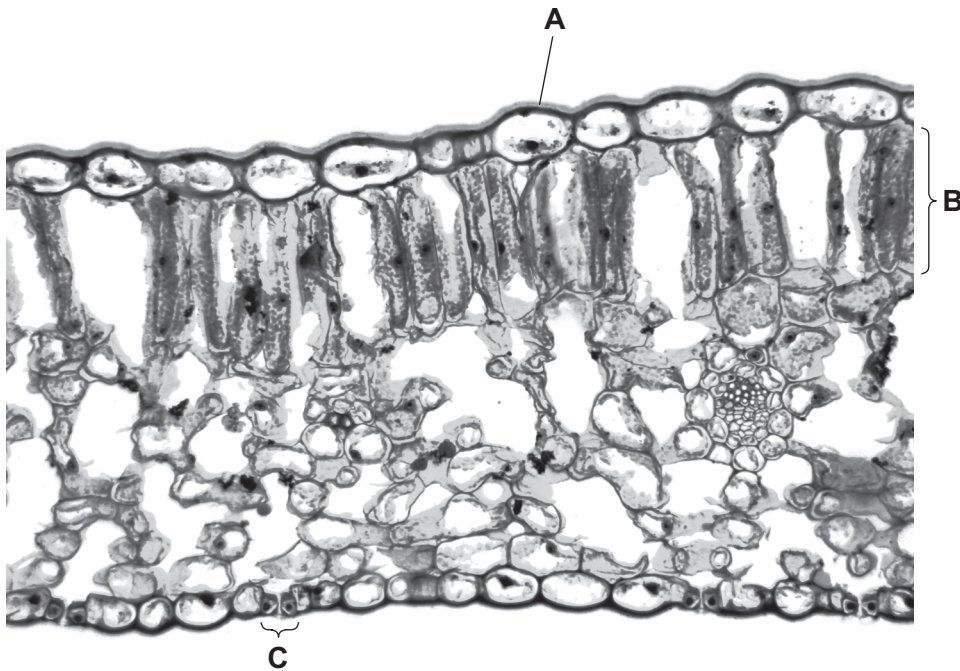


Fig. 8.1

(a) (i) Name layers **A** and **B**.

A

B [2]

(ii) State a function of layer **A**.

.....
..... [1]

(iii) Describe the function of **C**.

.....
..... [1]

- (b) Measurements were made of the mass of water taken in and lost by a plant every two hours for 24 hours.

For
Examiner's
Use

Fig. 8.2 is a graph showing the mass of water lost from the plant by transpiration.

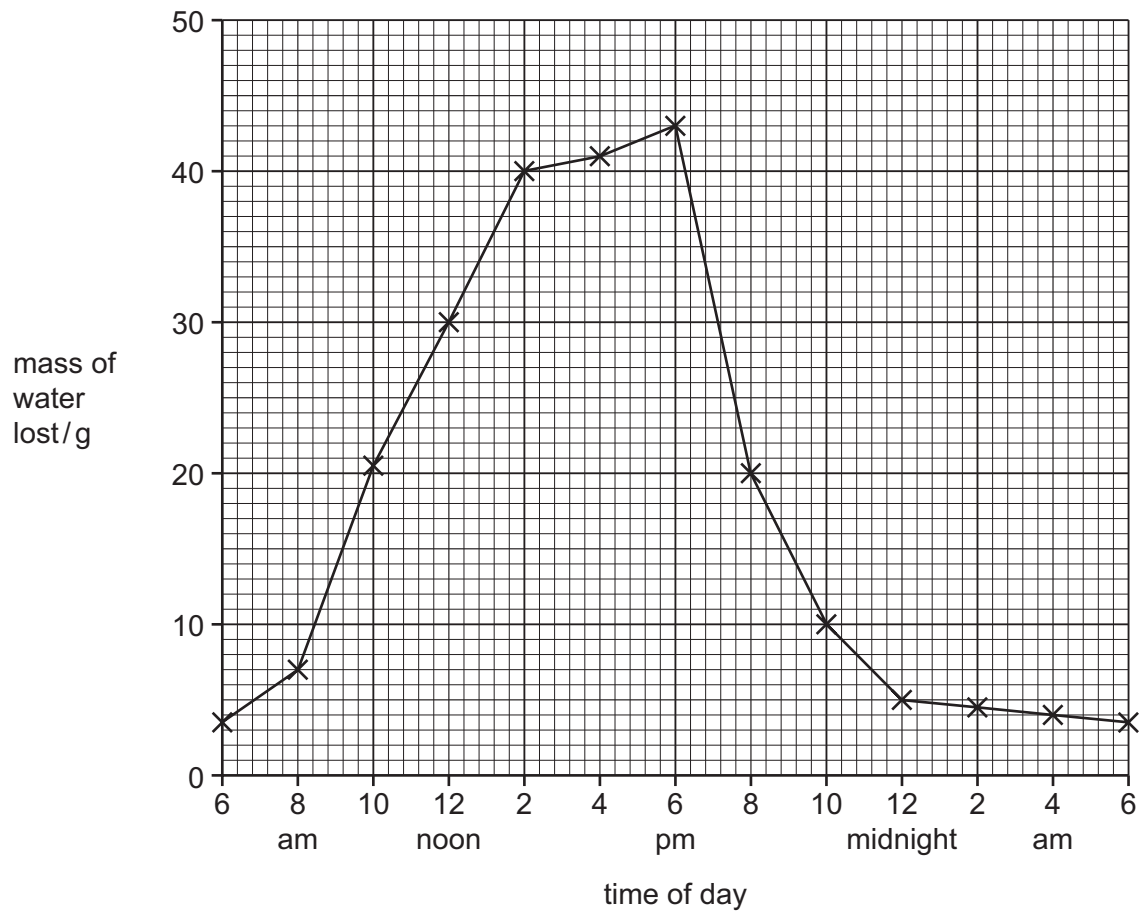


Fig. 8.2

- (i) Use the graph, Fig. 8.2, to state the time when the mass of water lost was greatest.

..... [1]

Table 8.1 shows the mass of water taken in by the plant every two hours. Some of the data has been plotted in Fig. 8.3.

For
Examiner's
Use

Table 8.1

| time of day | mass of water taken in by plant / g |
|-------------|-------------------------------------|
| 6 am | plotted |
| 8 am | plotted |
| 10 am | 22 |
| 12 noon | 40 |
| 2 pm | 50 |
| 4 pm | 44 |
| 6 pm | 30 |
| 8 pm | 10 |
| 10 pm | plotted |
| 12 midnight | plotted |
| 2 am | plotted |
| 4 am | plotted |
| 6 am | plotted |

Fig. 8.3 shows the mass of water lost and the mass of water taken in by the plant during the same period.

For
Examiner's
Use

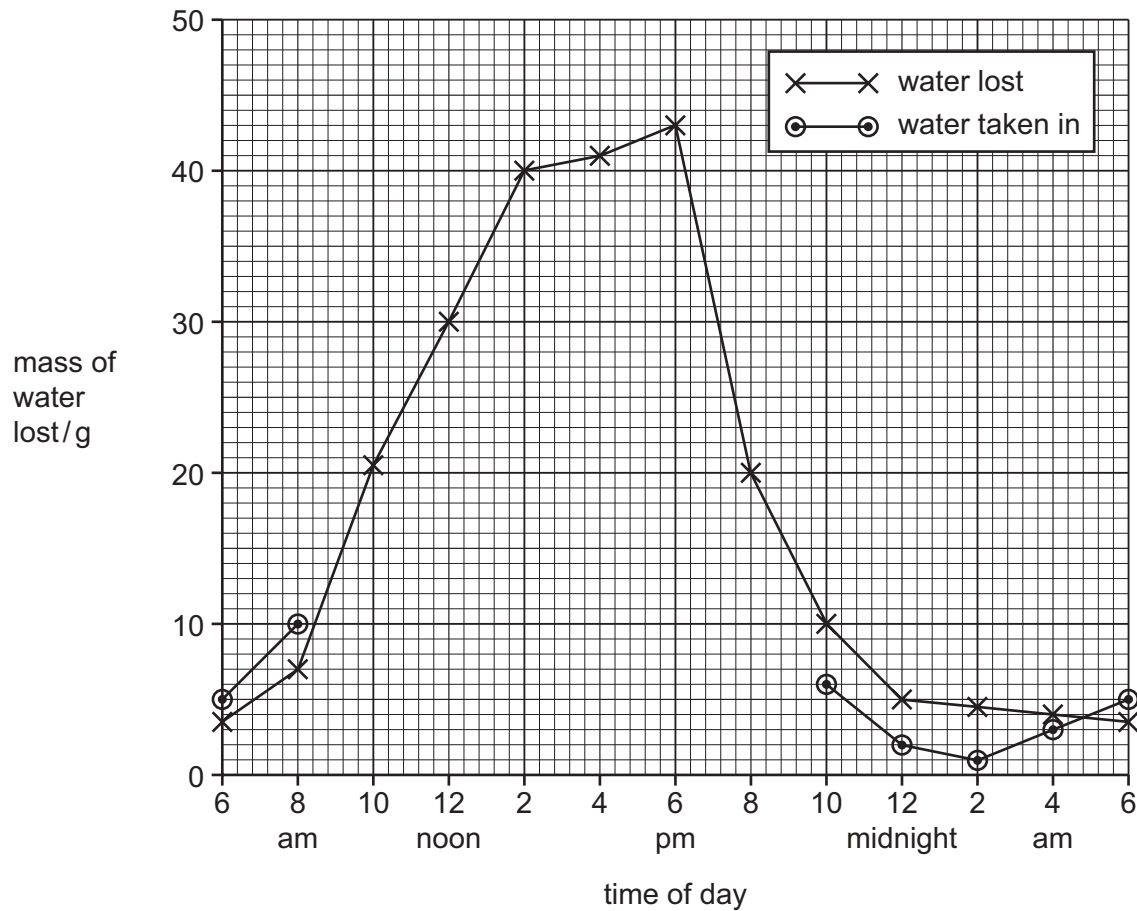


Fig. 8.3

- (ii) Complete the graph, Fig. 8.3, to show the mass of water taken in by the plant from 8 am to 10 pm.

Draw your graph on Fig. 8.3. [2]

- (iii) State the period of time during which water taken in was less than water lost.

..... [1]

- (iv) Describe the state of the stomata between 6 am and 2 pm.

..... [1]

- (v) Suggest **one** factor that caused the state in (b)(iv).

..... [1]

(vi) Name and explain **one** factor, other than your answer to (b)(v), that might increase the loss of water from a leaf during the day.

For
Examiner's
Use

.....

.....

.....

.....

.....

..... [3]

[Total: 13]

- 9 Table 9.1 shows the percentage of the main types of foods in the diet of two teenage girls. One girl lives in Great Britain and the other girl in sub-Saharan Africa.

For
Examiner's
Use

Table 9.1

| food type | girl in Great Britain % of diet | girl in sub-Saharan Africa % of diet |
|----------------------|------------------------------------|---|
| cereals | 15.0 | 75.0 |
| fruit and vegetables | 35.0 | 15.0 |
| milk and cheese | 15.0 | 7.5 |
| eggs, fish and meat | 30.0 | 2.5 |
| sweets and sugar | 5.0 | 0.0 |

- (a) Compare the percentage of foods rich in fats in the two diets.

.....
..... [1]

- (b) Suggest how the lack of sweets and sugar in the diet of the African girl might benefit her health.

.....
.....
.....
..... [2]

- (c) The diet of the African girl contains much less protein than that of the British girl. Suggest and explain **one** way in which a diet containing little protein might affect her physical development.

.....
.....
.....
..... [2]

[Total: 5]

BLANK PAGE

Permission to reproduce items where third-party owned material protected by copyright is included has been sought and cleared where possible. Every reasonable effort has been made by the publisher (UCLES) to trace copyright holders, but if any items requiring clearance have unwittingly been included, the publisher will be pleased to make amends at the earliest possible opportunity.

University of Cambridge International Examinations is part of the Cambridge Assessment Group. Cambridge Assessment is the brand name of University of Cambridge Local Examinations Syndicate (UCLES), which is itself a department of the University of Cambridge.