

UNIVERSITY OF CAMBRIDGE INTERNATIONAL EXAMINATIONS
International General Certificate of Secondary Education

GEOGRAPHY

0460/02

Paper 2

May/June 2004

1 hour 30 minutes

Additional Materials: Answer Booklet/Paper;
Ruler;
Protractor;
1:25 000 Survey Map Extract is enclosed
with this question paper.

READ THESE INSTRUCTIONS FIRST

If you have been given an Answer Booklet, follow the instructions on the front cover of the Booklet.
Write your Centre number, candidate number and name on all the work you hand in.
Write in dark blue or black pen on both sides of the paper.
You may use a soft pencil for any diagrams, graphs or rough working.
Do not use staples, paper clips, highlighters, glue or correction fluid.

Answer **all** questions.

At the end of the examination, fasten all your work securely together.

The number of marks is given in brackets [] at the end of each question or part question.

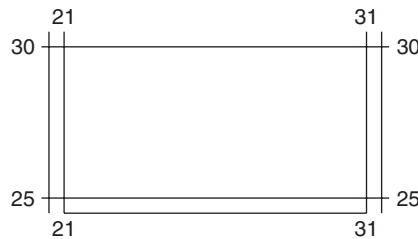
Insert 1 contains Fig.1 for Question 2, Fig. 2 for Question 3 and Fig. 5 for Question 6.

Insert 2 contains Photograph A for Question 3.

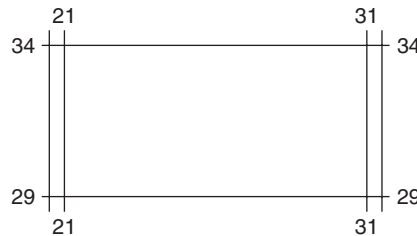
Sketch maps and diagrams should be drawn whenever they serve to illustrate an answer.

- 1 Study the map extract of part of the island of Grenada, in the Caribbean, and answer questions 1 to 5. The scale of the map is 1:25 000.

- (a) (i) Give the six figure grid reference of the main trigonometrical station at Point Jeudy in the south-east corner of the map extract. [1]
- (ii) Name the industry found at grid reference 281291. [1]
- (iii) Measure the distance along the all weather road from the road junction at Ruth Howard (263281) to the southern end of the all weather road at grid reference 262262. Give your answer in metres. [1]
- (iv) Calculate the bearing from grid north of the minor trigonometrical station on Ross Point (265307) **from** the minor trigonometrical station on Quarantine Point (243289). [1]
- (v) Name **two** plantation crops grown in the area south of northing 30. [1]



- (b) State the primary and secondary industries carried on in the area of the map extract north of northing 29. [3]



- (c) State the facilities for leisure, recreation and tourism in the CBD and suburbs of the town of St. George's. [5]
- (d) Describe the physical features of the coast between Point Salines and St. George's Harbour. [4]
- (e) Give **three** reasons for the route followed by the all weather road between the northern edge of the map (284340) and the road junction at Gretna Green (265326). [3]

2 Study Table 1 below which shows some information about three countries.

| | Area (km ²) | Population in millions | % population in agriculture | Kgs of fertiliser used per hectare | People per tractor |
|----------------|-------------------------|------------------------|-----------------------------|------------------------------------|--------------------|
| Bangladesh | 143 996 | 131.3 | 82 | 24 | 20580 |
| Canada | 9976 139 | 31.6 | 4 | 32 | 38 |
| United Kingdom | 244 030 | 59.6 | 2 | 144 | 96 |

Table 1

- (a) Which country, named in Table 1, has the lowest density of population? [1]
- (b) In which country is farming most mechanised? [1]
- (c) Which country is an example of intensive subsistence agriculture? [1]
- (d) Which country is an example of intensive commercial agriculture? [1]
- (e) Using the information given in Table 1, draw a divided bar graph (Fig.1, Insert 1) to show the amount of fertiliser used per hectare in each country. [2]

- 3 (a) Fig. 2 (Insert 1) shows changes in the percentage of the work force employed in different types of industry in developed countries from 1800 to 2000.
- (i) What percentage of the work force was employed in secondary industries in 2000? [1]
 - (ii) On Fig. 2 continue the two lines to show how the percentages employed in different industries in developed countries are likely to change between 2000 and 2050. [2]
- (b) One industry found in many developing countries is the craft industry. Describe the main features of the craft industry shown in Photograph A (Insert 2). [4]
- 4 Study Fig. 3 which is a field sketch of a coastline.



Fig. 3

- (a) Suggest the main function of the settlement shown in the sketch. [1]
- (b) Using evidence from the field sketch only, suggest **two** reasons for the site and function of the settlement. [2]
- (c) Describe the physical features of the coastline shown in the field sketch. [4]

5 Fig. 4 shows the location of an oil refinery near Port Harcourt, a major city and port in

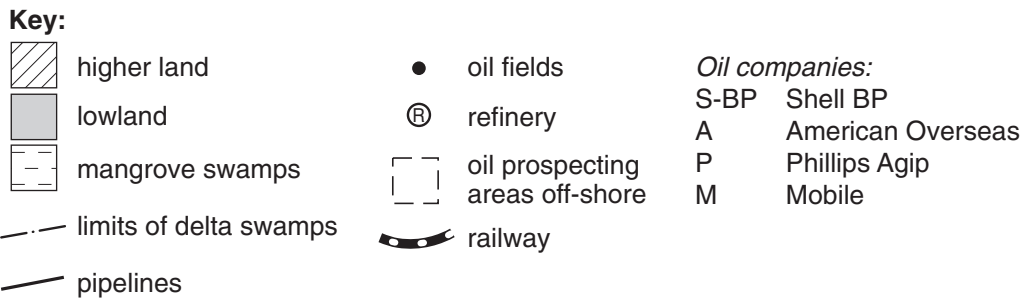
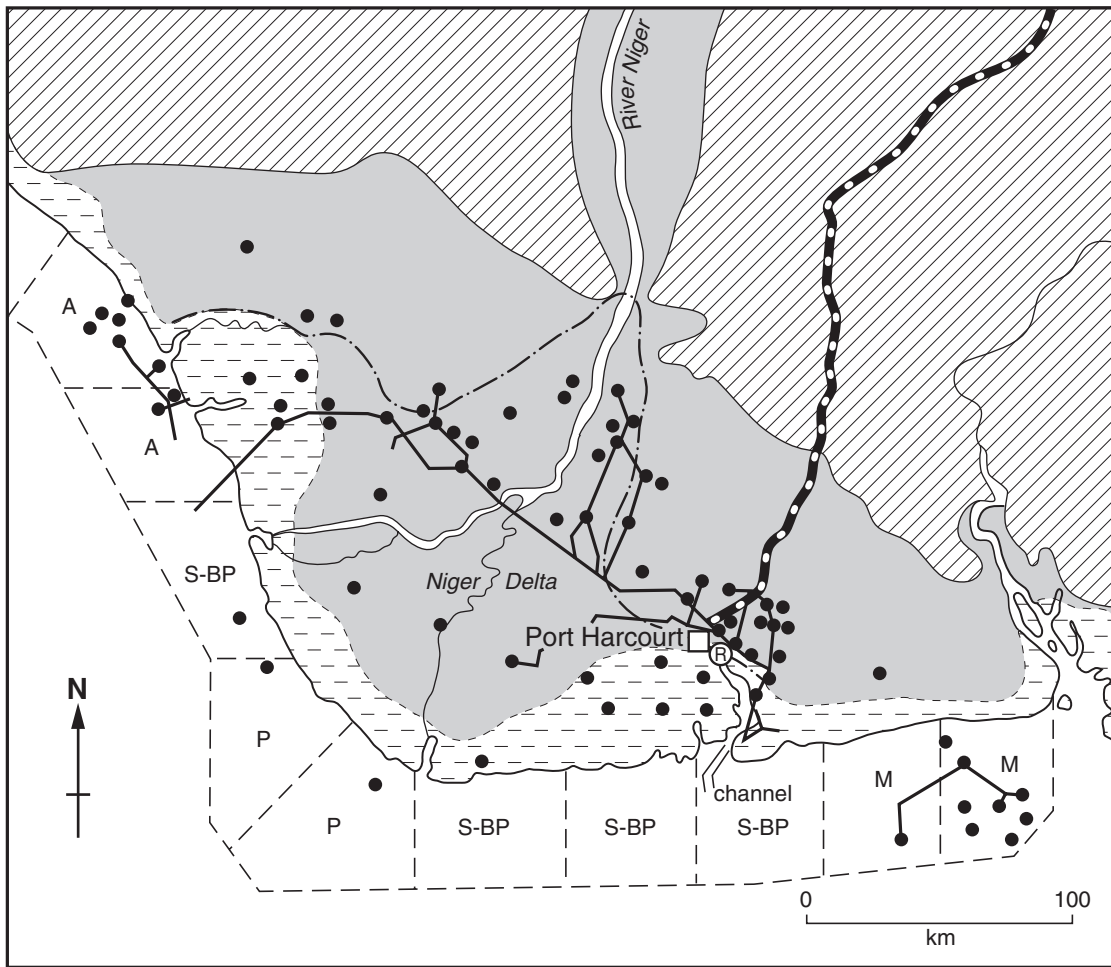
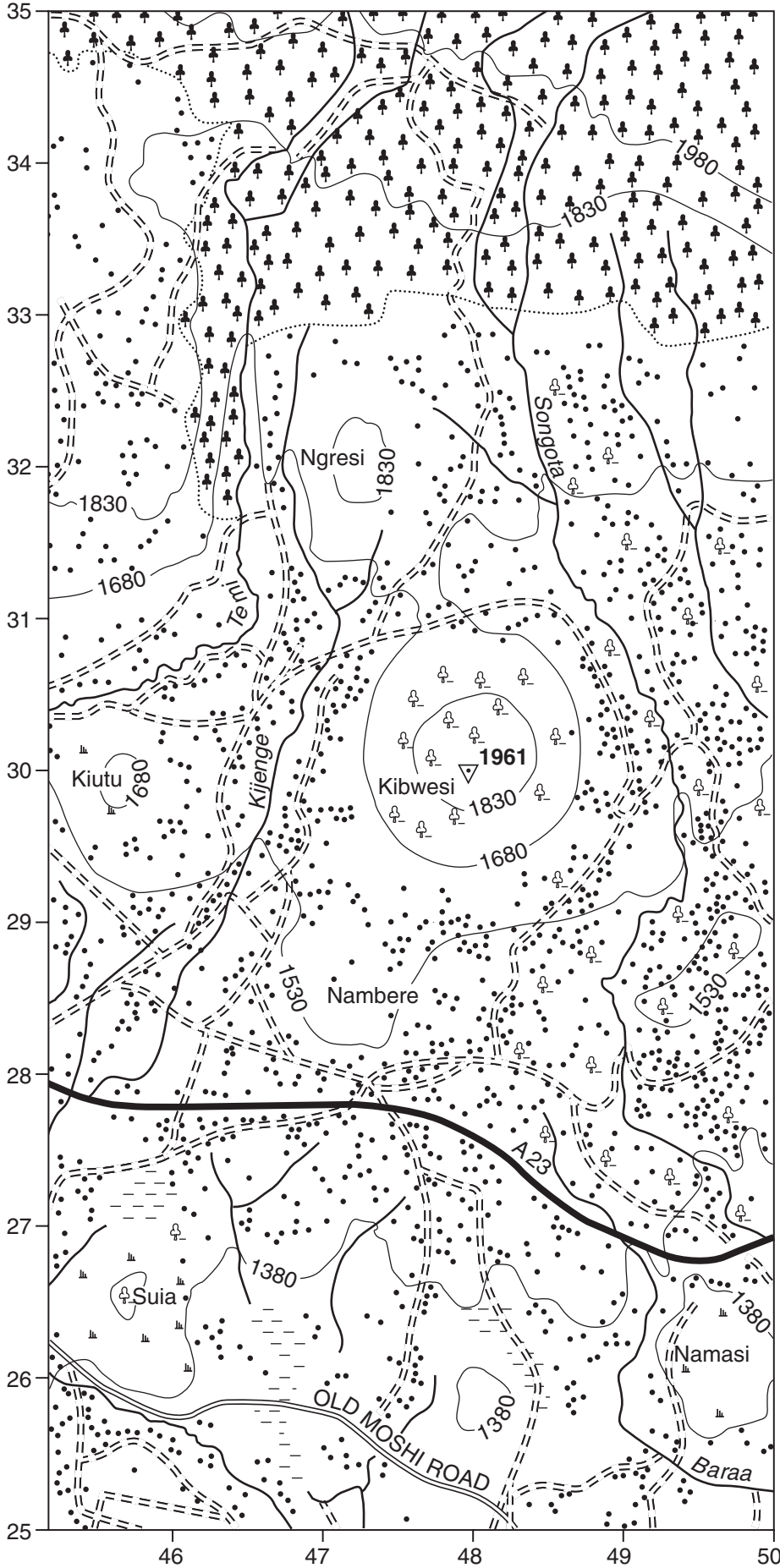


Fig. 4

- (a) (i) Which company has developed most off-shore oil fields in the area shown in Fig. 4? [1]
- (ii) Suggest why the large oil companies decided to drill for oil off-shore. [1]
- (b) With the aid of evidence from Fig. 4 only, suggest why the oil refinery was built near Port Harcourt. [4]

- 6 Study Fig. 5 (Insert 1) which shows land use in different areas, **A**, **B** and **C**, of a large city.
- (a) Complete graph A by entering the information given below in the correct order. Use the key provided.
- Offices and shops 10%
 - Transport 6%
 - Manufacturing 12%
- [2]
- (b) State which of the areas **A**, **B**, **C** is
- (i) the outer suburbs of the city,
- (ii) the CBD of the city.
- [2]
- (c) Compare the land use of area **A** with that of area **C**.
- [3]
- 7 Study Fig. 6 (opposite) which shows the distribution of huts in a rural area of Tanzania, a country in East Africa.
- (a) State the height of the trigonometrical ground station shown on Fig. 6. [1]
- (b) Describe the distribution of the huts shown on Fig. 6. [3]
- (c) Why do some of the areas on the map have no huts? [3]



Key:

- 1980 Contours
- Rivers
- All weather road
- Dry weather road
- Tracks and footpaths
- Huts
- Forest
- Bush and scattered trees
- Bush and scrub
- Seasonal swamp
- Trigonometrical ground station
- 1961** Height in metres

Fig. 6 for Question 7

Copyright Acknowledgements:

Question 3 Photograph. R.F. Sharpe

University of Cambridge International Examinations has made every effort to trace copyright holders, but if we have inadvertently overlooked any we will be pleased to make the necessary arrangements at the first opportunity.

University of Cambridge International Examinations is part of the University of Cambridge Local Examinations Syndicate (UCLES) which is itself a department of