



UNIVERSITY OF CAMBRIDGE INTERNATIONAL EXAMINATIONS
International General Certificate of Secondary Education

GEOGRAPHY

0460/22

Paper 2

October/November 2010

INSERT

1 hour 30 minutes

READ THESE INSTRUCTIONS FIRST

This Insert contains Photographs A and B for Question 3 and Fig. 6 for Question 4.

This document consists of **4** printed pages.



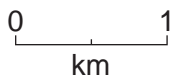
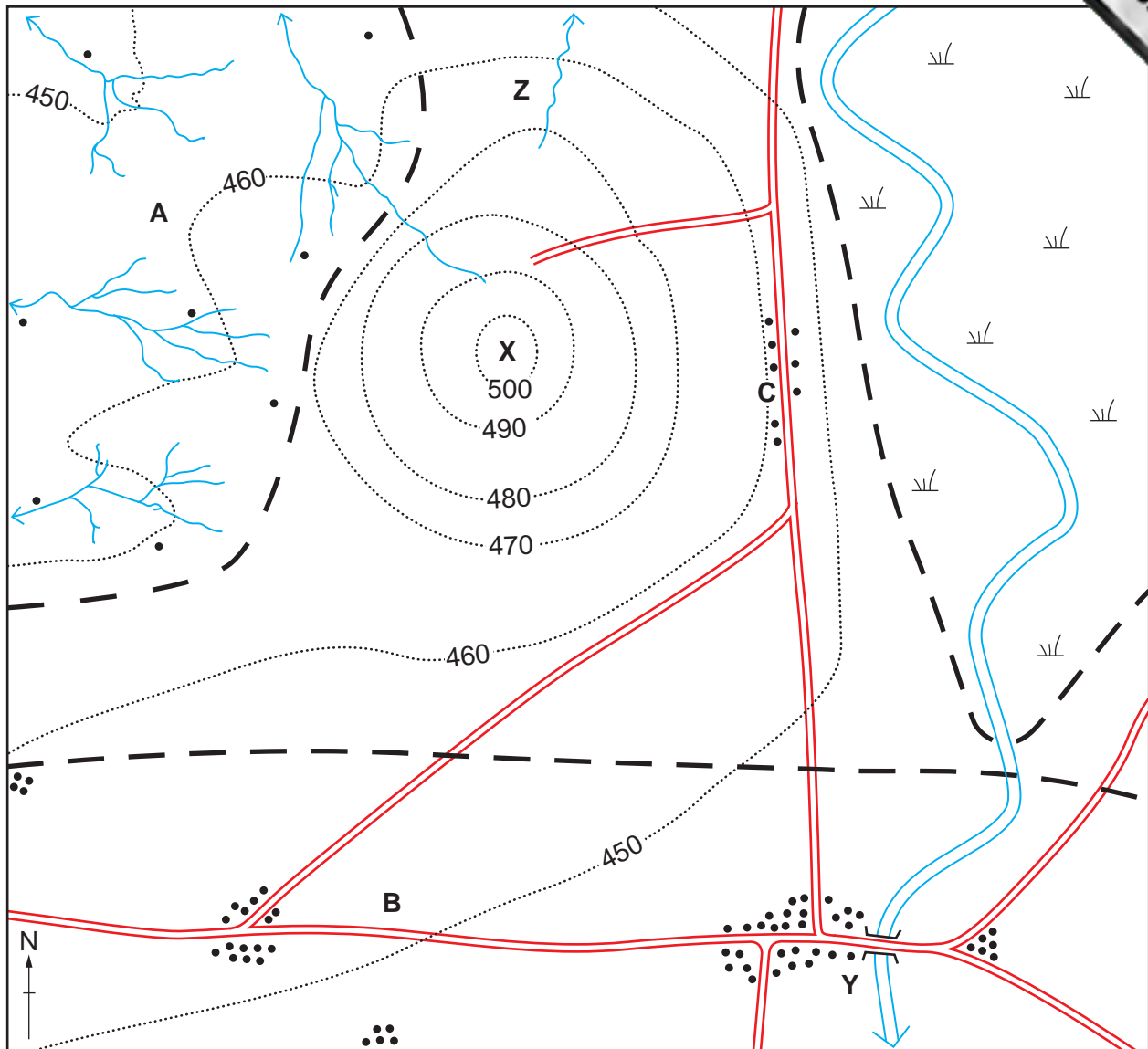
Photograph A for Question 3



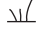



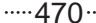


Photograph B for Question 3



Fig. 6 for Question 4



- Key**
-  river
 -  stream
 -  marsh
 -  road with bridge
 -  building
 -  boundaries of areas A, B and marsh
 -  470 contour with height in metres