



Cambridge International Examinations
Cambridge International General Certificate of Secondary Education

GEOGRAPHY

0460/12

Paper 1

February/March 2018

INSERT

1 hour 45 minutes



READ THESE INSTRUCTIONS FIRST

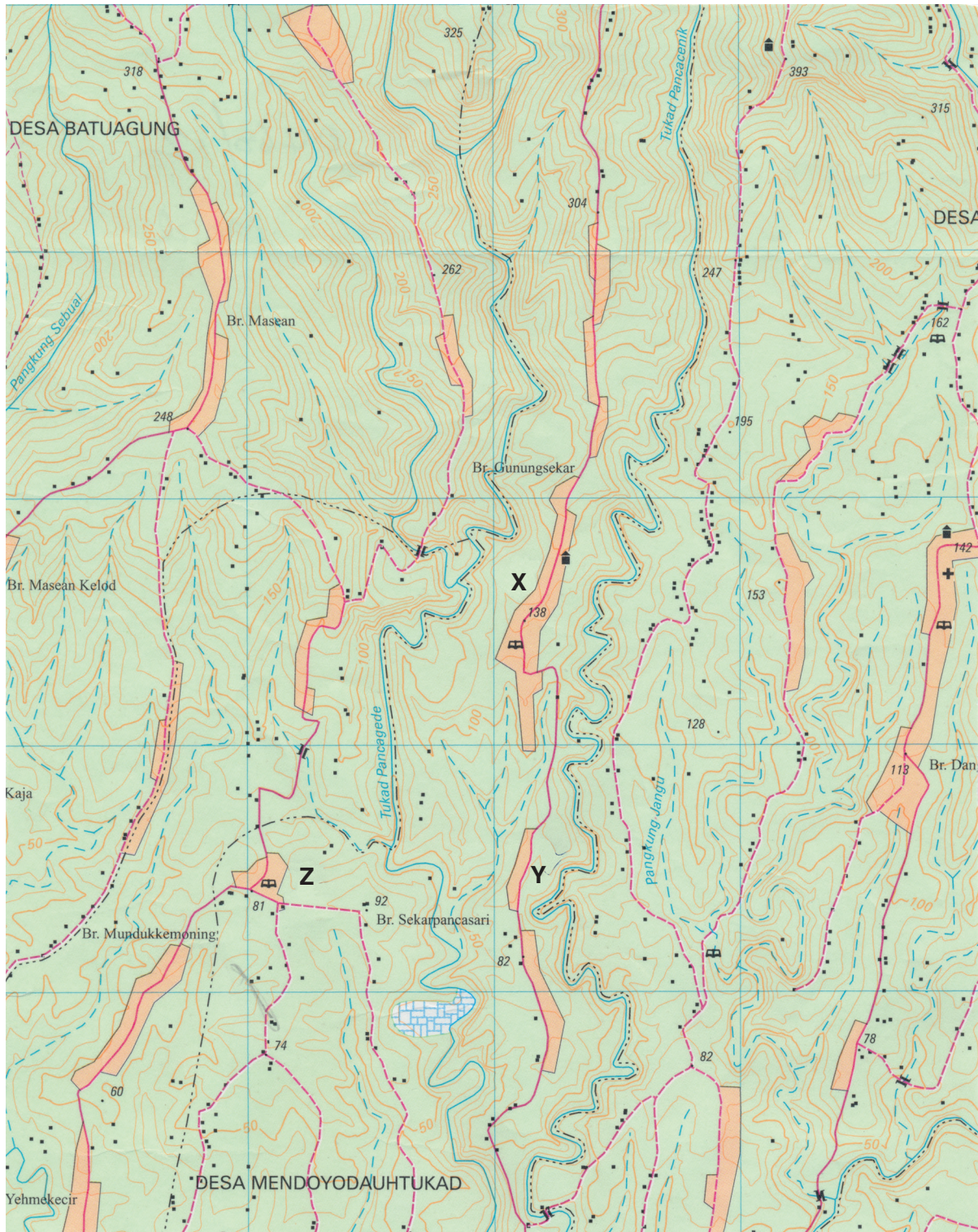
The Insert contains Fig. 2.1 for Question 2, Fig. 3.1 for Question 3, Fig. 4.1 for Question 4, and Figs. 5.2 and 5.3 for Question 5.

The Insert is **not** required by the Examiner.

The syllabus is approved for use in England, Wales and Northern Ireland as a Cambridge International Level 1/Level 2 Certificate.

This document consists of **6** printed pages and **2** blank pages.

Fig. 2.1 for Question 2



0 1 2
Scale 1:25 000 (4 cm = 1 km)

Key










	built-up area		local road
	building		track
	temple		irrigated rice fields
	school		farmland
			bridge

Fig. 3.1 for Question 3



Fig. 4.1 for Question 4



Fig. 5.2 for Question 5



Fig. 5.3 for Question 5



BLANK PAGE

BLANK PAGE

Permission to reproduce items where third-party owned material protected by copyright is included has been sought and cleared where possible. Every reasonable effort has been made by the publisher (UCLES) to trace copyright holders, but if any items requiring clearance have unwittingly been included, the publisher will be pleased to make amends at the earliest possible opportunity.

To avoid the issue of disclosure of answer-related information to candidates, all copyright acknowledgements are reproduced online in the Cambridge International Examinations Copyright Acknowledgements Booklet. This is produced for each series of examinations and is freely available to download at www.cie.org.uk after the live examination series.

Cambridge International Examinations is part of the Cambridge Assessment Group. Cambridge Assessment is the brand name of University of Cambridge Local Examinations Syndicate (UCLES), which is itself a department of the University of Cambridge.