

Survey Map

In order to preserve the scale, the map should be printed in colour onto A3 paper.

When printing, select 'Actual size'.

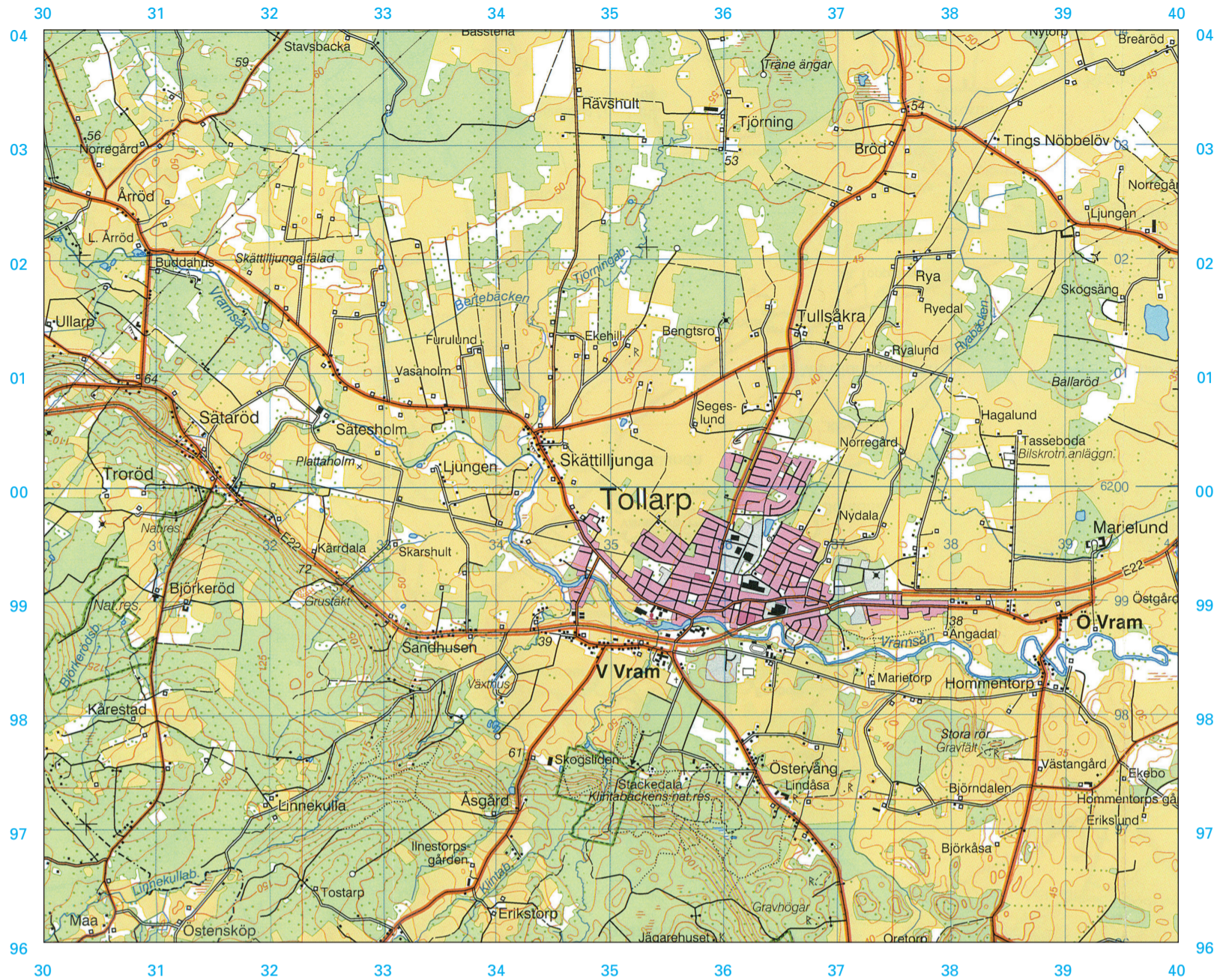
Do not select 'Fit' as this will re-size the map.

You may need to change the paper size to A3.

Ensure the orientation is Portrait.

1:50 000 Scale

Tollarp



Legend

- | | | |
|--|--|--|
| +++++⊗ National boundary with cairns | Low-rise buildings | Other major building |
| -+-+--+ County boundary | Leisure homes, second homes | Parish church; other church |
| ----- Municipality boundary | Industrial area | Cemetery; bell tower |
| Boundary of National Park; nature reserve | Rock outcrop; boulders | Sports Ground; football ground |
| ----- Boundary of other area | Coniferous and mixed forest | Trotting track |
| Prohibited area for cross-country vehicles | Forest of mountain type | Shooting range, large; small |
| Boundary of firing range | Deciduous forest; other open land | Mine shaft, large; small |
| Boundary of military restricted area | Arable land; orchard | Watercourse, less than 6 m wide |
| Motorway | Marsh; marsh liable to flooding | Watercourse, at least 6 m wide; footbridge |
| Public road, at least 7 m wide | Peat cutting; limestone bog | Underground watercourse; flume line or chute |
| Public road, 5-7 m wide; road number | Mast; tower | Opening bridge; ferry route |
| Public road, less than 5 m wide | Windmill; wind generator | Lock; direction of flow |
| Public road under construction | Chimney; cistern | Waterfall; rapids |
| Through street; main street | Sawmill; timber depot | Dam structure; landing-stage |
| Street; street in precinct | Settlement remains; ruin | Jetty; lighthouse; pier |
| Private road, good standard; milestone | Natural monument, botanical; geological | Shoreline |
| Private road with barrier; avenue | Monument; ancient monument of special interest | Diffuse shoreline |
| Private road, poor standard; turning place | Building of cultural and historical value | Depth contour lines; shoal (rock, awash) |
| Approach road, park road, cycle path | Bathing; camp site; marina | Depth in metres; navigable fairway, channel |
| Tractor track; foot path | Lay-by; wind shelter | Contour lines, vertical interval 5 m |
| Illuminated track; hiking trail | Belt of forest; small forest stand | Cutting; depression |
| Railway, double track electrified | Castle; manor; farm | Triangulation point |
| Railway, not electrified | Dwelling house, industrial building; hut | Measured height or surface |
| Railway, narrow gauge | | |
| Railway station; tunnel | | |
| Crossing, overpass or underpass | | |
| Runway, surfaced; unsurfaced | | |
| Aerial cableway, ski lift; gas pipeline | | |
| Electricity transmission line, national | | |
| Electricity transmission line, reg.; transformer | | |
| Precincts | | |
| High-rise buildings | | |

Scale 1 : 50 000

