

UNIVERSITY OF CAMBRIDGE INTERNATIONAL EXAMINATIONS
International General Certificate of Secondary Education

MARK SCHEME for the May/June 2010 question paper
for the guidance of teachers

**0417 INFORMATION AND COMMUNICATION
TECHNOLOGY**

0417/03 Paper 3 (Practical Test B), maximum raw mark 80

This mark scheme is published as an aid to teachers and candidates, to indicate the requirements of the examination. It shows the basis on which Examiners were instructed to award marks. It does not indicate the details of the discussions that took place at an Examiners' meeting before marking began, which would have considered the acceptability of alternative answers.

Mark schemes must be read in conjunction with the question papers and the report on the examination.

- CIE will not enter into discussions or correspondence in connection with these mark schemes.

CIE is publishing the mark schemes for the May/June 2010 question papers for most IGCSE, GCE Advanced Level and Advanced Subsidiary Level syllabuses and some Ordinary Level syllabuses.

Page 2	Mark Scheme: Teachers' version	Syllabus	Paper
	IGCSE – May/June 2010	0417	03

Candidate name, Centre number, candidate number

```
<HTML>
<HEAD>
  <TITLE>Relaxing Holiday Company - June 2010</TITLE>
  <link rel="stylesheet" type="text/css" href="JXstyles1.css">
</HEAD>
<BODY>
```

Correct stylesheet attached
Must be relative referencing
1 mark

```
<a name="START"></a>
<TABLE width="100%" id="top">
  <TR align="center" valign="center">
    <TD colspan="4"></TD>
  </TR>
  <TR>
    <TD colspan="4">
      <h3>Last edited by Candidate name, centre number, candidate number
    </TD>
  </TR>
```

Anchor START
Can be in first cell of table
Upper case
Not visible on page
1 mark

```
<TR>
  <TD colspan="4">
    <h2>Sun
  </TD>
  <TD colspan="4">
    <h2>Sea
  </TD>
  <TD colspan="4">
    <h2>Sand
  </TD>
  <TD colspan="4">
    <h2><a href="#SNOWZONE">Snow</a>
  </TD>
</TR>
</TABLE>
```

Table Width 100% 1 mark

Hyperlink Snow
To anchor SNOWZONE
Upper case and wrong checklist
1 mark
1 mark

Table Width 90% 1 mark

```
<TABLE width="90%" align="center" id="middle">
  <TR>
    <TD rowspan="3"></TD>
    <TD><h3>We offer holidays to suit your every need. We can often make dreams come true. </TD>
  </TR>
  <TR>
    <TD><h3>Let us arrange your holiday for you. We will collect you from your home and offer the best service
of any holiday company in the world.</TD>
  </TR>
  <TR>
    <TD><h3>Combine our service with superb value for money. Contact us with your requirements and we are
sure that we will not disappoint you.</TD>
</TR>
</TABLE>
```

Table Width 100% 1 mark

```
<TABLE width="100%" id="bottom">
  <TR>
    <TD>
      <h2>
    </TD>
    <TD>
      <h2><a href="JXSEA.HTM" target="_sea">
    </TD>
  </TR>
```

Target _sea
Case as shown
to JXSEA.HTM
Ignore case
Accept base target placed in head of page
1 mark
1 mark

Page 3	Mark Scheme: Teachers' version	Syllabus	Paper
	IGCSE – May/June 2010	0417	03

<pre> <h2> </TD> </TR> <TR align="center" valign="center"> <TD colspan = "4"> </TD> </TR> <TR> <TD colspan = "4"> <h1> Try RHC Snowzone</h1> <h3> Why not relax with a chilling winter holiday on the both short haul and long haul and can offer some of the be chalets for the ultimate luxury. Leave the slopes and return prepared for you by one of the world finest chefs. You will not find these holidays in any brochure, each holiday is unique to your requirements. Contact us using the link above for further details.</h3> </TD> </TR> <TR> <TD colspan = "4"> <h2>Click Here to return to the top of the page.</h2> </TD> </TR> </TABLE> </BODY> </HTML> </pre>	<div style="border: 1px solid black; padding: 5px; margin-bottom: 10px;"> <p>Target Phone image as link 1 mark</p> <p>JXImg6 only</p> <p>Penalise for absolute image reference</p> <p>Correct mailto: 1 mark</p> <p>Ignore case</p> </div> <div style="border: 1px solid black; padding: 5px; margin-bottom: 10px;"> <p>Anchor SNOWZONE 1 mark</p> <p>Case as shown</p> <p>No extra text</p> </div> <div style="border: 1px solid black; padding: 5px;"> <p>Hyperlink Click Here 1 mark</p> <p>Click Here only</p> <p>Rest of text intact</p> <p>Returns to start 1 mark</p> <p>Allow follow through on name</p> </div>
--	--

Page 4	Mark Scheme: Teachers' version	Syllabus	Paper
	IGCSE – May/June 2010	0417	03

Top left Last edited by & name & No's 1 mark
Any order for name and numbers

Top table From JXTOP.htm 1 mark
Table must be fully visible

Middle table 3 rows and 2 columns 1 mark
Merged cells in column 1 1 mark
Table centre aligned in window 1 mark
Award only if tables fully visible
Correct text each cell 1 mark
Can check in markup if needed
Style h3 1 mark
JXHARBOUR.JPG left cell 1 mark
NEW SCREENSHOT

Page 5	Mark Scheme: Teachers' version	Syllabus	Paper
	IGCSE – May/June 2010	0417	03

Relaxing Holiday Company - June 2010

The Relaxing Holiday Company

Last edited by Candidate name, Centre number, candidate number

Sun	Sea	Sand	Phone
-----	-----	------	-------



We offer holidays to suit your every need. We can often make dreams come true.

Let us arrange your holiday for you. We will collect you from your home and offer the best service of any holiday company in the world.

Combine our service with superb value for money. Contact us with your requirements and we are sure that we will not disappoint you.






Chill, let RHC take care of you!

Try RHC Snowzone

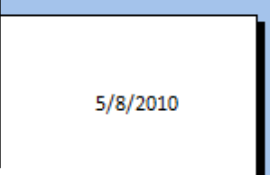
Why not relax with a chilling winter holiday on the slopes. We can cater for a range of destinations, both short haul and long haul and can offer some of the best 'off piste' skiing and boarding. Try out catered chalets for the ultimate luxury. Leave the slopes and return to the chalet to find a superb a la carte dinner prepared for you by one of the world finest chefs. You will not find these holidays in any brochure, each holiday is unique to your requirements. Contact us using the link above for further details.

[Click Here](#) to return to the top of the page.

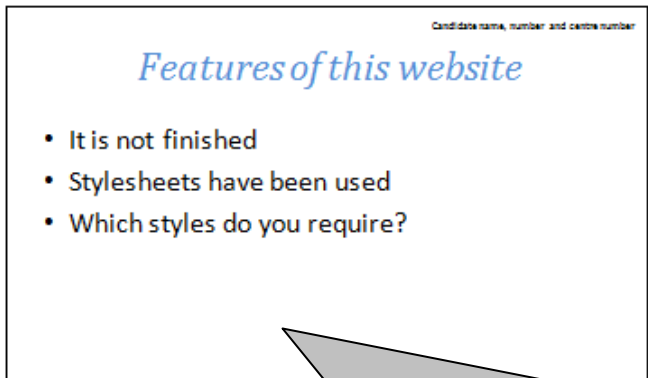
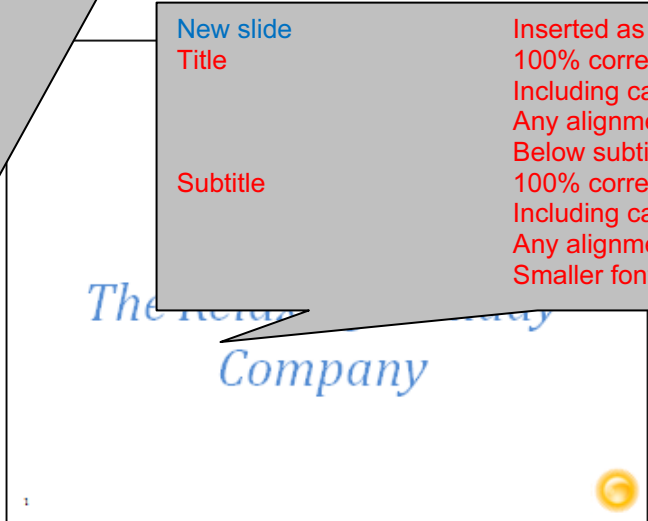
Bottom table	From JXBOTTOM.htm	1 mark
	Table must be fully visible	
	Sun image left	1 mark
	Sea image 2nd	1 mark
	Sand image 3rd	1 mark
	Phone image right	1 mark
	Sun resized to 160 & aspect	1 mark
	Sand resized to 160 & aspect	1 mark

Page 6	Mark Scheme: Teachers' version	Syllabus	Paper
	IGCSE – May/June 2010	0417	03

Master slide – CHECK CONSISTENCY		
Background	White, slide numbers bottom left Left 1/3 of slide	1 mark
Name, cand no, Centre no	Top right black, 12pt, serif Right 1/2 of slide	1 mark
Image	Sun – bottom right Must not be source files – flexible Right 1/3 of slide	1 mark
Master slide items	Not overlapping any object Not touching and all present	1 mark



New slide	Inserted as first slide	1 mark
Title	100% correct Including case, can be on single line Any alignment/No bullet points Below subtitle	1 mark
Subtitle	100% correct Including case, can be on single line Any alignment/No bullet points Smaller font than title	1 mark



File JXPRES.RTF	Imported	1 mark
	All slides present and intact	
	Titles larger than bullets and consistent style (fonts/bullets)	1 mark
	Bulleted lists consistent style	1 mark
	Size may vary from slide to slide	


Page 7	Mark Scheme: Teachers' version	Syllabus	Paper
	IGCSE – May/June 2010	0417	03

5/8/2010

Candidate name, number and centre number

Background

- Background colour can be added to stylesheets
- Background images can be added to stylesheets




1

Candidate name, number and centre number

Stylesheet JXstyle1.css

- The background image in JXstyle1.css does not work because:
 - File not present in current directory or filename incorrect
- The html code to make the background colour show is:
 - `body {background-color: #025fb4 }`
- The text for h1 and h2 is not white and h3 is not yellow because:
 - No green element in hexadecimal colour code



4

2

Slide 4

Answer 1 File not present/misnamed 1 mark

Not in current directory/folder

Text 'answer n here' has been replaced 1 mark

Must be all

Answer 2 Body {} 1 mark

Background-color: #025fb4 1 mark

e.g. `body {background-image: url(j9sunset.jpg); background-color: #025fb4}`

Answer 3 No green element 1 mark

Accept hex with FF for middle 2 digits

In hexadecimal/colour code/definition 1 mark

Page 8	Mark Scheme: Teachers' version	Syllabus	Paper
	IGCSE – May/June 2010	0417	03

5/8/2010

Spacing

Candidate name, number and centre number

- The cell spacing has changed between JXstyle1.css and JXstyle2.css
- Cell padding is:
 - Space between the text and the cell wall inside a cell of a table
- Cell spacing is:
 - Space between the walls of 2 adjacent cells

Slide 5

Answer 4

Space between text and cell wall

1 mark

Inside/in table/cell

1 mark

Interchange cell wall and border

Answer 5

Space between

1 mark

Walls of 2 adjacent cells

1 mark

Interchange cell wall and border

Printed

2 slides per page

1 mark

3

Page 9	Mark Scheme: Teachers' version	Syllabus	Paper
	IGCSE – May/June 2010	0417	03

Destination	Lookup used	1 mark
	Lookup or Vlookup	
	Correct lookup reference	1 mark
	Do not allow range	
	Lookup – relative reference	1 mark
	Correct range	1 mark
	Including filename	
	Range – absolute reference	1 mark
	Check range works	
	Correct return column	1 mark
	Award if visible and Lookup used	
Check first row		

Trips	COUNTIF function	1 mark
	Correct range	1 mark
	Check range works	
	Range – absolute reference	1 mark
	Correct lookup	1 mark
	Lookup – relative reference	1 mark

Trips

=COUNTIF(\$D\$25:\$D\$98,B2)
 =COUNTIF(\$D\$25:\$D\$98,B3)
 =VLOOKUP(JXDEST.csv!\$A\$2:\$B\$11,2,0) EGY =COUNTIF(\$D\$25:\$D\$98,B4)
 =VLOOKUP(JXDEST.csv!\$A\$2:\$B\$11,2,0) IND =COUNTIF(\$D\$25:\$D\$98,B5)
 =VLOOKUP(B6,JXDEST.csv!\$A\$2:\$B\$11,2,0) MAL =COUNTIF(\$D\$25:\$D\$98,B6)
 =VLOOKUP(B7,JXDEST.csv!\$A\$2:\$B\$11,2,0) SRI =COUNTIF(\$D\$25:\$D\$98,B7)
 =VLOOKUP(B8,JXDEST.csv!\$A\$2:\$B\$11,2,0) THA =COUNTIF(\$D\$25:\$D\$98,B8)

Days	Correct SUMIF function	1 mark
	Correct range	1 mark
	Check range works	
	Range – absolute reference	1 mark
	Lookup – relative reference	1 mark
	Correct range	1 mark
	Check range works	
	Range – absolute reference	1 mark
	Other functions like SUMIFS may be used	

Month	Mcode	Days
January	1	=SUMIF(\$B\$25:\$B\$98,B11,\$F\$25:\$F\$98)
February	2	=SUMIF(\$B\$25:\$B\$98,B12,\$F\$25:\$F\$98)
March	3	=SUMIF(\$B\$25:\$B\$98,B13,\$F\$25:\$F\$98)
April	4	=SUMIF(\$B\$25:\$B\$98,B14,\$F\$25:\$F\$98)
May	5	=SUMIF(\$B\$25:\$B\$98,B15,\$F\$25:\$F\$98)
June	6	=SUMIF(\$B\$25:\$B\$98,B16,\$F\$25:\$F\$98)
July	7	=SUMIF(\$B\$25:\$B\$98,B17,\$F\$25:\$F\$98)
August	8	=SUMIF(\$B\$25:\$B\$98,B18,\$F\$25:\$F\$98)
September	9	=SUMIF(\$B\$25:\$B\$98,B19,\$F\$25:\$F\$98)
October	10	=SUMIF(\$B\$25:\$B\$98,B20,\$F\$25:\$F\$98)
November	11	=SUMIF(\$B\$25:\$B\$98,B21,\$F\$25:\$F\$98)
December	12	=SUMIF(\$B\$25:\$B\$98,B22,\$F\$25:\$F\$98)

Replication	All 3 formulae	1 mark
Formulae, data and labels	Fully visible	1 mark
Orientation	Landscape	1 mark
Print area	Selected data only	1 mark

Footer	name and numbers	1 mark
---------------	------------------	--------

Candidate name Centre number candidate number

Page 10	Mark Scheme: Teachers' version	Syllabus	Paper
	IGCSE – May/June 2010	0417	03

Destination	Code	Trips
Bahamas	BAH	7
Cozumel	COZ	7
Egypt	EGY	16
India	IND	13
Maldives	MAL	11
Sri Lanka	SRI	8
Thailand	THA	12

Row 1, 10, 24 Centre aligned
Only three rows shown
Bold and italic
Orientation Portrait
1 mark
1 mark
1 mark

Month	Mcode	Days
January	1	28
February	2	31
March	3	42
April	4	69
May	5	104
June	6	80
July	7	77
August	8	55
September	9	83
October	10	66
November	11	125
December	12	70

Day	Month	Year	DCode	Discount	Duration
27	9	2010	EGY	Y	10
14	8	2010	MAL	N	14
21	8	2010	THA	N	7
2	8	2010	COZ	Y	10
10	5	2010	SRI	Y	14
27	5	2010	BAH	N	21
28	9	2010	IND	N	14
21	4	2010	IND	N	10
2	12	2010	COZ	Y	14
16	5	2010	EGY	Y	14
18	11	2010	SRI	Y	21
4	7	2010	EGY	Y	7
11	3	2010	THA	N	7
3	4	2010	COZ	Y	14
5	6	2010	COZ	Y	7
3	10	2010	IND	N	14
1	6	2010	MAL	N	14
19	6	2010	THA	N	14
23	11	2010	SRI	N	14
5	7	2010	THA	Y	14
1	6	2010	EGY	N	14
23	12	2010	MAL	Y	7

Page 11	Mark Scheme: Teachers' version				Syllabus	Paper
	IGCSE – May/June 2010				0417	03

21	10	2010	IND	N	14
14	11	2010	MAL	N	10
1	3	2010	BAH	Y	7
3	1	2010	COZ	Y	14
17	9	2010	THA	N	14
2	5	2010	SRI	N	10
14	8	2010	THA	Y	7
31	7	2010	THA	Y	14
7	5	2010	EGY	N	7
15	5	2010	EGY	Y	14
17	8	2010	SRI	Y	7
21	1	2010	BAH	N	7
29	12	2010	MAL	Y	14
5	11	2010	THA	Y	21
23	11	2010	MAL	Y	14
29	9	2010	IND	Y	7
29	0	2010	EGY	N	14
27	10	2010	BAH	Y	7
18	8	2010	IND	Y	10
28	7	2010	BAH	Y	14
3	10	2010	MAL	N	10
19	0	2010	EGY	Y	10
19	3	2010	BAH	N	14
4	6	2010	EGY	Y	21
12	4	2010	SRI	Y	10
4	11	2010	EGY	Y	14
30	5	2010	IND	N	14
26	9	2010	IND	N	14
10	4	2010	MAL	Y	14
29	9	2010	EGY	Y	10
26	10	2010	IND	N	14
7	11	2010	MAL	Y	14
7	12	2010	THA	N	14
14	12	2010	IND	N	7
5	6	2010	COZ	N	10
25	5	2010	EGY	Y	10
14	7	2010	SRI	Y	14
12	2	2010	IND	Y	14
11	1	2010	EGY	Y	7
5	3	2010	THA	N	14
22	7	2010	IND	N	7
23	4	2010	IND	Y	14
24	12	2010	THA	Y	14
20	2	2010	THA	Y	7
4	11	2010	MAL	N	10
19	10	2010	EGY	N	7
13	9	2010	EGY	N	7

Page 12	Mark Scheme: Teachers' version				Syllabus	Paper
	IGCSE – May/June 2010				0417	03

17	9	2010	MAL	Y	7
29	4	2010	EGY	Y	7
20	2	2010	COZ	N	10
30	11	2010	SRI	Y	7
15	7	2010	BAH	Y	7

<i>DCode</i>	<i>Discount</i>	<i>Duration</i>
EGY	Y	10
EGY	Y	14
EGY	Y	7
EGY	Y	14
EGY	Y	10
EGY	Y	21
EGY	Y	14
EGY	Y	10
EGY	Y	10
EGY	Y	7
EGY	Y	7

Search	DCode = EGY and Discount = Y	1 mark
Rows	1–23 hidden	1 mark
Columns	A, B, C Hidden	1 mark