



Cambridge IGCSE™ (9–1)

INFORMATION AND COMMUNICATION TECHNOLOGY

0983/03

Paper 3 Practical Test B

October/November 2020

MARK SCHEME

Maximum Mark: 80

Published

This mark scheme is published as an aid to teachers and candidates, to indicate the requirements of the examination. It shows the basis on which Examiners were instructed to award marks. It does not indicate the details of the discussions that took place at an Examiners' meeting before marking began, which would have considered the acceptability of alternative answers.

Mark schemes should be read in conjunction with the question paper and the Principal Examiner Report for Teachers.

Cambridge International will not enter into discussions about these mark schemes.

Cambridge International is publishing the mark schemes for the October/November 2020 series for most Cambridge IGCSE™, Cambridge International A and AS Level and Cambridge Pre-U components, and some Cambridge O Level components.

This document consists of **10** printed pages.

Generic Marking Principles

These general marking principles must be applied by all examiners when marking candidate answers. They should be applied alongside the specific content of the mark scheme or generic level descriptors for a question. Each question paper and mark scheme will also comply with these marking principles.

GENERIC MARKING PRINCIPLE 1:

Marks must be awarded in line with:

- the specific content of the mark scheme or the generic level descriptors for the question
- the specific skills defined in the mark scheme or in the generic level descriptors for the question
- the standard of response required by a candidate as exemplified by the standardisation scripts.

GENERIC MARKING PRINCIPLE 2:

Marks awarded are always **whole marks** (not half marks, or other fractions).

GENERIC MARKING PRINCIPLE 3:

Marks must be awarded **positively**:

- marks are awarded for correct/valid answers, as defined in the mark scheme. However, credit is given for valid answers which go beyond the scope of the syllabus and mark scheme, referring to your Team Leader as appropriate
- marks are awarded when candidates clearly demonstrate what they know and can do
- marks are not deducted for errors
- marks are not deducted for omissions
- answers should only be judged on the quality of spelling, punctuation and grammar when these features are specifically assessed by the question as indicated by the mark scheme. The meaning, however, should be unambiguous.

GENERIC MARKING PRINCIPLE 4:

Rules must be applied consistently, e.g. in situations where candidates have not followed instructions or in the application of generic level descriptors.

GENERIC MARKING PRINCIPLE 5:

Marks should be awarded using the full range of marks defined in the mark scheme for the question (however; the use of the full mark range may be limited according to the quality of the candidate responses seen).

GENERIC MARKING PRINCIPLE 6:

Marks awarded are based solely on the requirements as defined in the mark scheme. Marks should not be awarded with grade thresholds or grade descriptors in mind.

The screenshot shows a Windows File Explorer window titled 'owg'. The address bar shows the path: DTLplus (H:) > 0417_03_Nov_2020 > worked > owg. The file list contains the following items:

Name	Date modified	Type	Size	Dimensions
n20bg.jpg	25/03/2018 11:52	JPG File	77 KB	400 x 400
n20contact.htm	25/03/2018 11:55	Chrome HTML Do...	1 KB	
n20contact.jpg	25/03/2018 11:36	JPG File	46 KB	200 x 267
n20daisy.jpg	25/03/2018 11:16	JPG File	132 KB	400 x 533
n20logo.jpg	21/06/2019 22:12	JPG File	108 KB	800 x 215
n20owg.css	27/09/2018 08:57	Cascading Style Sh...	1 KB	
n20text.txt	25/03/2018 13:11	Text Document	1 KB	
n20vista.jpg	25/03/2018 11:17	JPG File	44 KB	200 x 267
n20wall.jpg	25/03/2018 11:15	JPG File	50 KB	200 x 267

9 items

Screen shot folder name, filenames, dimensions, extensions, file sizes 1 mark

n20owg.css - Notepad
File Edit Format View Help

```
/* A Candidate ZZ999 9999 */
```

```
table      { border: 0px solid black;
             border-collapse: separate;
             border-spacing:20px;}

td         { border: 0px solid black;}

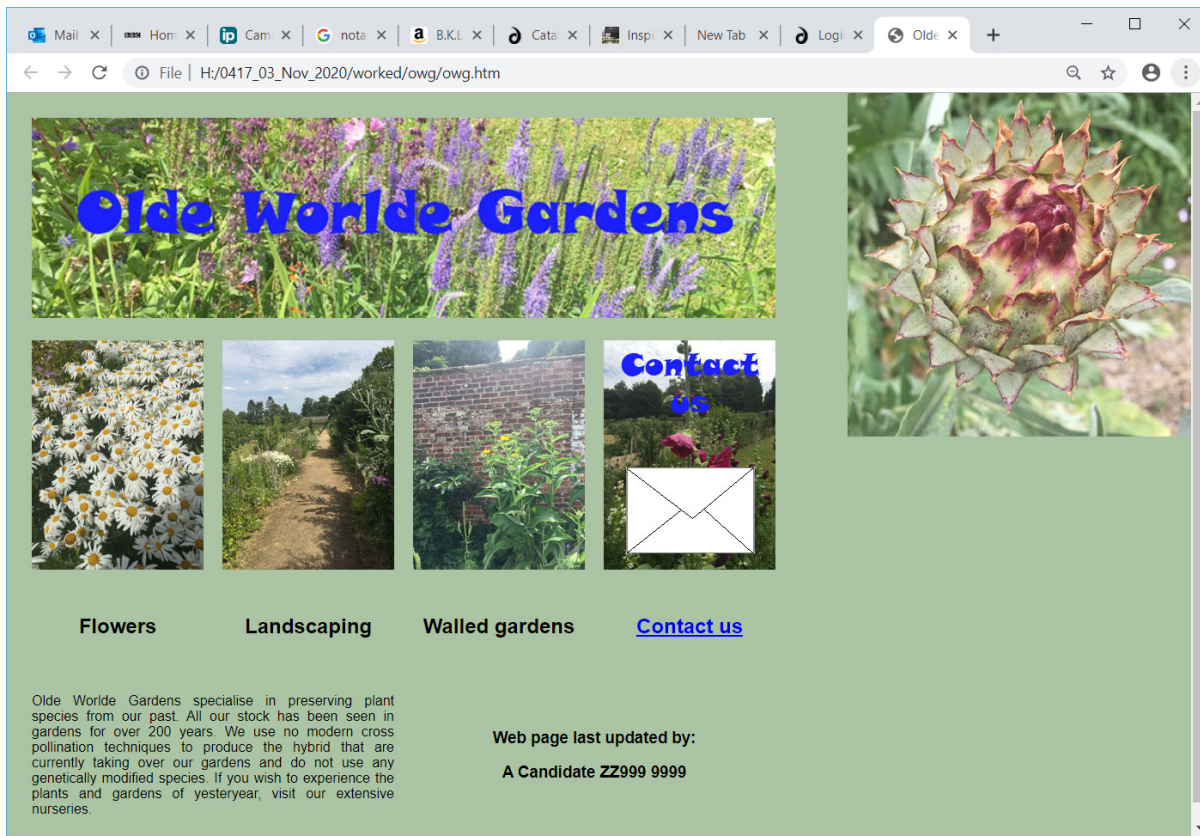
h2         { text-align:center; }
h3         { text-align:center; }

body       { background-color: #abc5a4;
             background-image: url('n20bg.jpg');
             background-repeat: no-repeat;
             background-position: right top;}

h1,h2,h3,p { font-family: Arial, "Helvetica Neue", sans-serif}

p         { text-align: justify;
             font-size: 12pt}|
```

	/* Candidate details at top of existing css */	1 mark
body	background-color: #abc5a4;	1 mark
	background-image: url('n20bg.jpg');	1 mark
	background-repeat: no-repeat;	1 mark
	background-position: right top;	1 mark
h1,h2,h3,p	All 4 correct selectors used	1 mark
	font-family: Arial	1 mark
	, "Helvetica Neue" in speech marks	1 mark
	,sans-serif	1 mark
	All using single selector	1 mark
p	text-align:justify;	1 mark
	font-size: 12pt	1 mark
	Correct css syntax	1 mark



In browser with address bar visible, no letters visible in cells	1 mark
No borders/gridlines visible	1 mark
n20logo.jpg visible	1 mark
3 correct images placed in row 2	1 mark
4th correct image placed in row 2	1 mark
Flowers Landscaping	1 mark
Walled gardens Contact us	1 mark
In h2	1 mark
Text placed from source file	1 mark
In style p	1 mark
Web page last updated by: A Candidate ZZ999 9999	1 mark
Candidate details on a new line	1 mark
in h3	1 mark

```
<!DOCTYPE html>
```

```
<html>
```

```
<head>
```

```
<link rel="stylesheet" type="text/css" href="n20owg.css">
```

```
<Title>Olde Worlde Gardens Homepage</title>
```

```
<base target="_self">
```

```
</head>
```

```
<body>
```

```
<table>
```

Stylesheet	n20owg.css attached	1 mark
Title	Olde Worlde Gardens Homepage	1 mark
Target	Base target="_self"	1 mark

td	single table created	1 mark
Row 1	width=872	1 mark
	height=215	1 mark
	colspan=4	1 mark

```
<tr>
```

```
<td colspan="4" style="width:872px; height:215px;">
```

```

```

Row 1	n20logo.jpg resized to 872 × 215	1 mark
-------	----------------------------------	--------

```
</td>
```

```
</tr>
```

```
<tr>
```

```
<td style="width:200px; height:267px;">
```

```

```

```
</td>
```

```
<td style="width:200px">
```

```

```

```
</td>
```

```
<td style="width:200px">
```

```

```

```
</td>
```

```
<td style="width:200px">
```

Row 2	n20daisy.jpg resized to 200 with aspect ratio	1 mark
Row 2/3	width:200px for all cells	1 mark

```

<a href="n20contact.htm" target="_blank">

</a>
</td>
</tr>
    
```

Hyperlinks	Anchor around image n20contact.jpg	1 mark
	Anchor around text Contact us	1 mark
	href="n20contact.htm"	1 mark
	target="_blank"	1 mark

Row 3	height:80px	1 mark
-------	-------------	--------

```

<tr>
<td style="height:80px;">
<h2>Flowers</h2>
</td>
<td>
<h2>Landscaping</h2>
</td>
<td>
<h2>Walled gardens</h2>
</td>
<td>
<a href="n20contact.htm" target="_blank">
<h2>Contact us</h2>
</a>
</td>
</tr>
<tr style="height:150px;">
<td colspan="2" style="width:424px">
    
```

Row 4	Left cell width:424px	1 mark
	Left cell colspan=2	1 mark
	Height:150px	1 mark

<p>Olde Worlde Gardens specialise in preserving plant species from our past. All our stock has been seen in gardens for over 200 years. We use no modern cross pollination techniques to produce the hybrid that are currently taking over our gardens and do not use any genetically modified species. If you wish to experience the plants and gardens of yesteryear, visit our extensive nurseries.

```

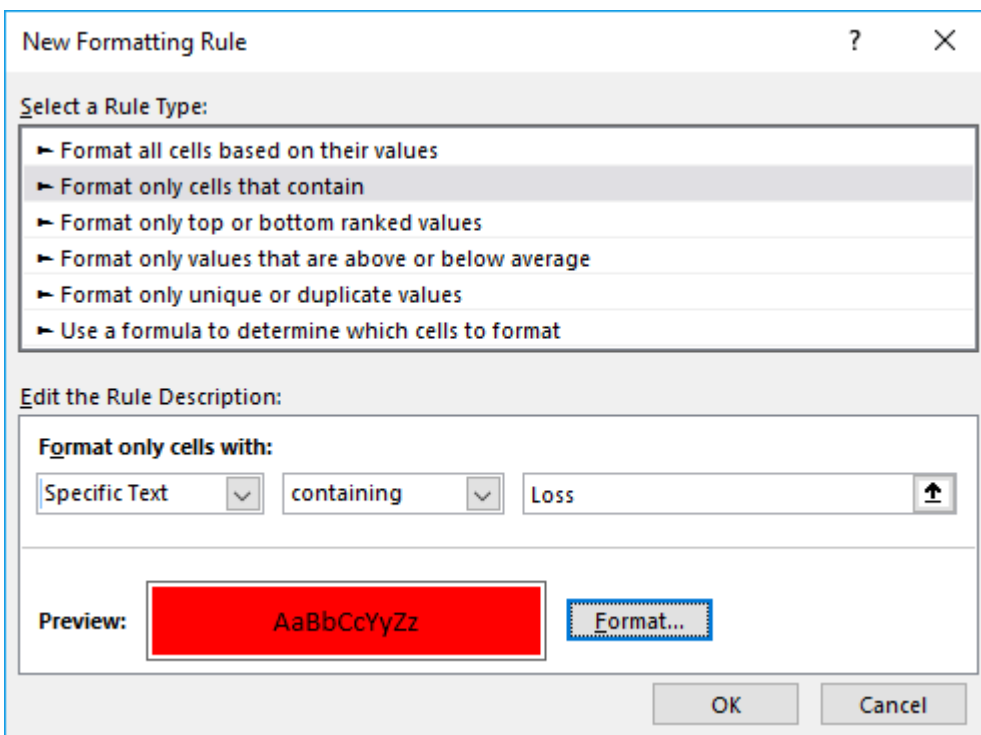
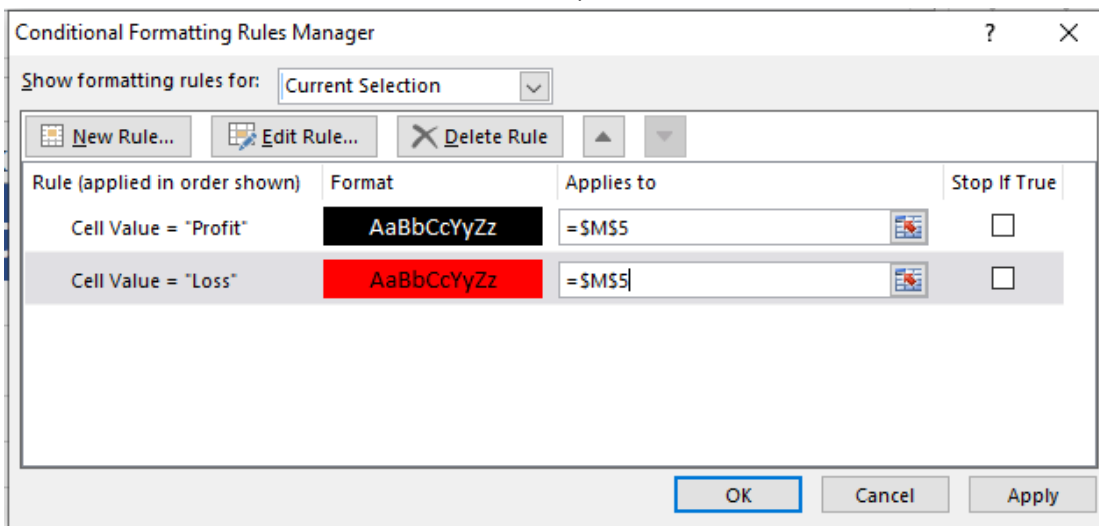
</p>
</td>
<td colspan="2">
<h3>Web page last updated by:</h3><h3>A Candidate ZZ999
9999</h3>
</td>
</tr>
    
```

Row 4	Right cell colspan=2	1 mark
Alt attribute	appropriate alt text for all images in row 2	1 mark

```

</table>
</body>
</html>
    
```

Format M5	Conditional formatting applied to M5	1 mark
	Format only cells that contain	1 mark
	Text "Loss"	1 mark
	... black text on red background	1 mark
	Text "Profit"	1 mark
	... white text on black background	1 mark



PUBLISHED

Header	Edited by space Name & numbers	1 mark
	...space on space date	1 mark
	Right aligned	1 mark

Edited by A Candidate ZZ999 9999 on 26/03/2018

Olde Worlde Gardens income and expenditure

	Income				Expenditure				Profit/Loss	
	Plant sales	Landscaping	Walled gardens	Total	Wages	Materials	Premises	Total	Figure	Indicator
January	\$318.53	\$7,752.55	\$5,858.00	\$13,929.08	\$1,430.00	\$6,805.27	\$320.00	\$8,555.27	\$5,373.81	Profit
February	\$692.96	\$5,640.94	\$3,901.25	\$10,235.15	\$1,430.00	\$4,771.09	\$320.00	\$6,521.09	\$3,714.06	Profit
March	\$657.47	\$1,844.33	\$0.00	\$2,501.80	\$1,430.00	\$922.16	\$320.00	\$2,672.16	-\$170.36	Loss
April	\$548.52	\$3,590.35	\$4,831.00	\$8,969.87	\$1,430.00	\$4,210.67	\$350.00	\$5,990.67	\$2,979.20	Profit
May	\$864.90	\$1,844.95	\$4,211.25	\$6,921.10	\$1,430.00	\$3,028.10	\$350.00	\$4,808.10	\$2,113.00	Profit
June	\$1,080.27	\$5,578.09	\$0.00	\$6,658.36	\$1,430.00	\$2,789.04	\$350.00	\$4,569.04	\$2,089.32	Profit
July	\$1,276.26	\$12,540.10	\$1,939.04	\$15,755.40	\$1,430.00	\$7,239.57	\$350.00	\$9,019.57	\$6,735.83	Profit
August	\$1,042.65	\$12,687.15	\$1,402.18	\$15,131.98	\$1,430.00	\$7,044.66	\$350.00	\$8,824.66	\$6,307.32	Profit
September	\$895.23	\$11,340.96	\$0.00	\$12,236.19	\$1,520.00	\$5,670.48	\$350.00	\$7,540.48	\$4,695.71	Profit
October	\$944.35	\$11,051.36	\$0.00	\$11,995.71	\$1,520.00	\$5,525.68	\$350.00	\$7,395.68	\$4,600.03	Profit
November	\$804.07	\$0.00	\$1,168.98	\$1,973.05	\$1,520.00	\$584.49	\$350.00	\$2,454.49	-\$481.44	Loss
December	\$384.37	\$891.55	\$0.00	\$1,275.92	\$1,520.00	\$566.30	\$350.00	\$2,436.30	-\$1,160.38	Loss

Row 1	New rows 1 and 2 inserted	1 mark
	Cells A1 to M1 merged & centre aligned	1 mark
	Text 100% accurate	1 mark
	24 point	1 mark
	White sans-serif font	1 mark
	Dark blue background	1 mark
Row 3	3 correct merged cells	1 mark
	Light grey background	1 mark
	18 point sans-serif font	1 mark

Column A	Right aligned	1 mark
Columns F & K	Narrowed to < 1cm	1 mark
Col A & row 4	Bold	1 mark
All text	Sans-serif font	1 mark
Numbers	Formatted as currency in \$ with 2dp	1 mark
Values	Single page, fully visible, no row and col heads	1 mark

	A	B	C	D	E	F	G	H	I	J	K	L	M
1	Olde Worlde Gardens income and expenditure												
2													
3	Income				Expenditure				Profit/Loss				
4		Plant sales	Landscaping	Walled gardens	Total		Wages	Materials	Premises	Total	Figure	Indicator	
5	January	318.53	7752.55	5858	=SUM(B5:D5)		1430	6805.27	320	=SUM(G5:I5)	=E5-J5	=IF(L5<0,"Loss","Profit")	
6	February	692.96	5640.94	3901.25	=SUM(B6:D6)		1430	4771.09	320	=SUM(G6:I6)	=E6-J6	=IF(L6<0,"Loss","Profit")	
7	March	657.47	1844.33	0	=SUM(B7:D7)		1430	922.16	320	=SUM(G7:I7)	=E7-J7	=IF(L7<0,"Loss","Profit")	
8	April	548.52	3590.35	4831	=SUM(B8:D8)		1430	4210.67	350	=SUM(G8:I8)	=E8-J8	=IF(L8<0,"Loss","Profit")	
9	May	864.9	1844.95	4211.25	=SUM(B9:D9)		1430	3028.1	350	=SUM(G9:I9)	=E9-J9	=IF(L9<0,"Loss","Profit")	
10	June	1080.27	5578.09	0	=SUM(B10:D10)		1430	2789.04	350	=SUM(G10:I10)	=E10-J10	=IF(L10<0,"Loss","Profit")	
11	July	1276.26	12540.1	1939.04	=SUM(B11:D11)		1430	7239.57	350	=SUM(G11:I11)	=E11-J11	=IF(L11<0,"Loss","Profit")	
12	August	1042.65	12687.15	1402.18	=SUM(B12:D12)		1430	7044.66	350	=SUM(G12:I12)	=E12-J12	=IF(L12<0,"Loss","Profit")	
13	September	895.23	11340.96	0	=SUM(B13:D13)		1520	5670.48	350	=SUM(G13:I13)	=E13-J13	=IF(L13<0,"Loss","Profit")	
14	October	944.35	11051.36	0	=SUM(B14:D14)		1520	5525.68	350	=SUM(G14:I14)	=E14-J14	=IF(L14<0,"Loss","Profit")	
15	November	804.07	0	1168.98	=SUM(B15:D15)		1520	584.49	350	=SUM(G15:I15)	=E15-J15	=IF(L15<0,"Loss","Profit")	
16	December	384.37	891.55	0	=SUM(B16:D16)		1520	566.3	350	=SUM(G16:I16)	=E16-J16	=IF(L16<0,"Loss","Profit")	

E5	=SUM(B5:D5)	1 mark
J5	=SUM(G5:I5)	1 mark
L5	=E5-J5	1 mark
M5	=IF(L5<0 ... =IF(L5>=0 ...	1 mark
	... , "Loss" ... , "Profit" ...	1 mark
	... , "Profit") ... , "Loss")	1 mark
Replication	All 4 formulae replicated for all months	1 mark
	Row and column headings displayed	1 mark
	Landscape and fully visible	1 mark