

UNIVERSITY OF CAMBRIDGE INTERNATIONAL EXAMINATIONS  
International General Certificate of Secondary Education

**JAPANESE**

**0519/03**

Paper 3 Speaking Role Play A

October/November 2006

**Approx. 10 minutes**

No Additional Materials are required.

**INSTRUCTIONS TO CANDIDATES**

Part One of the test will be a role play based on the situation outlined overleaf. You should study the situation and then be prepared to act the role assigned to you and respond to the part played by your teacher. The role play should last between two-three minutes.

Part Two of the test will be a conversation with your teacher on a topic of your choice.

Part Three of the test will be the unprepared General conversation with your teacher.

This document consists of **3** printed pages and **1** blank page.

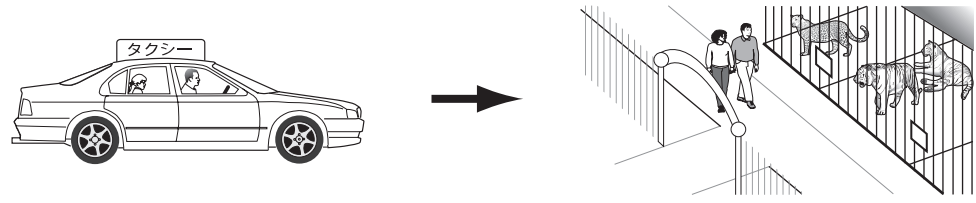


ROLE PLAY CARD A

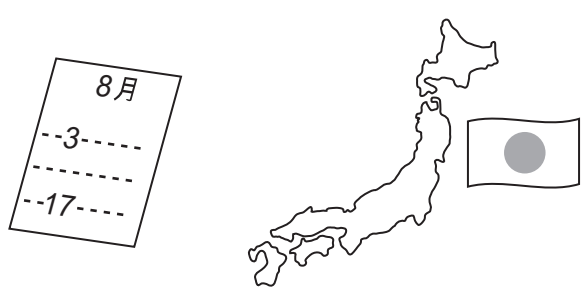
生と : あなた  
先生 : タクシーのひと

あなたは タクシーに のります。 えを みて、 はなしてください。  
タクシーの人 (=examiner) が さいしょに (=at first) はなします。

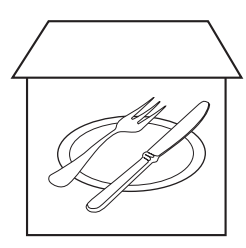
1 えを みて、 こたえてください。



2 えを みて、 こたえてください。

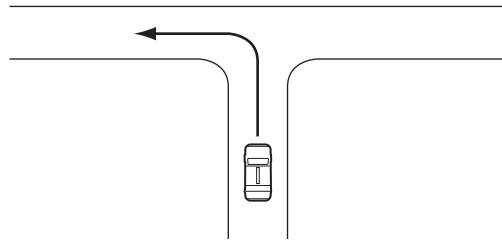


3 えを みて、 こたえてください。



3

4 えをみて、こたえてください。



5 おれいをいってきいてください。



---

Permission to reproduce items where third-party owned material protected by copyright is included has been sought and cleared where possible. Every reasonable effort has been made by the publisher (UCLES) to trace copyright holders, but if any items requiring clearance have unwittingly been included, the publisher will be pleased to make amends at the earliest possible opportunity.

University of Cambridge International Examinations is part of the University of Cambridge Local Examinations Syndicate (UCLES), which is itself a department of the University of Cambridge.

UNIVERSITY OF CAMBRIDGE INTERNATIONAL EXAMINATIONS  
International General Certificate of Secondary Education

**JAPANESE**

**0519/03**

Paper 3 Speaking Role Play B

October/November 2006

**Approx. 10 minutes**

No Additional Materials are required.

**INSTRUCTIONS TO CANDIDATES**

Part One of the test will be a role play based on the situation outlined overleaf. You should study the situation and then be prepared to act the role assigned to you and respond to the part played by your teacher. The role play should last between two-three minutes.

Part Two of the test will be a conversation with your teacher on a topic of your choice.

Part Three of the test will be the unprepared General conversation with your teacher.

This document consists of **3** printed pages and **1** blank page.

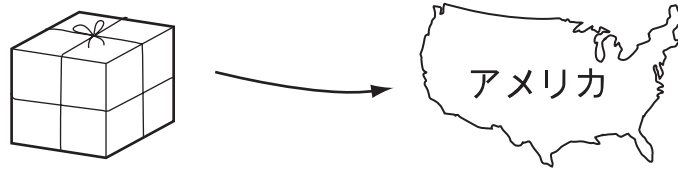


ROLE PLAY CARD B

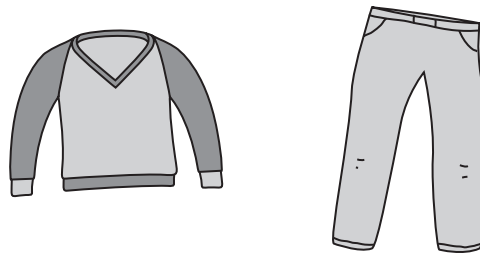
生と : あなた  
先生 : ゆうびんきよくの人

あなたは ゆうびんきよくで にもつを おくります。 えを みて、 はなしてください。  
ゆうびんきよくの人 (=examiner) が さいしょに (=at first) はなします。

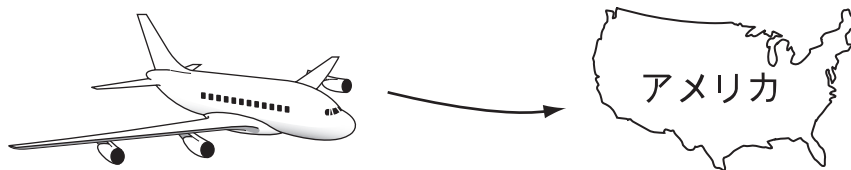
1 えを みて、 行ってください。



2 えを みて、 こたえてください。

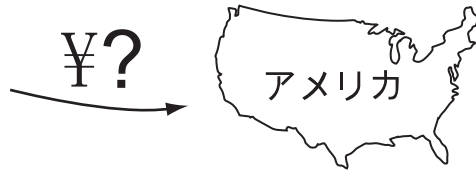


3 えを みて、 こたえてください。

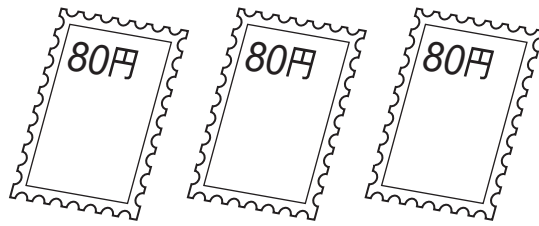


3

4 こたえてから、えをみてきいてください。



5 こたえてから、えをみて、たのんでください。



---

Permission to reproduce items where third-party owned material protected by copyright is included has been sought and cleared where possible. Every reasonable effort has been made by the publisher (UCLES) to trace copyright holders, but if any items requiring clearance have unwittingly been included, the publisher will be pleased to make amends at the earliest possible opportunity.

University of Cambridge International Examinations is part of the University of Cambridge Local Examinations Syndicate (UCLES), which is itself a department of the University of Cambridge.