



UNIVERSITY OF CAMBRIDGE INTERNATIONAL EXAMINATIONS  
International General Certificate of Secondary Education

CANDIDATE  
NAME

CENTRE  
NUMBER

--	--	--	--	--

CANDIDATE  
NUMBER

--	--	--	--

\* 6 9 7 8 6 3 1 1 4 6 \*

**COMBINED SCIENCE**

**0653/23**

Paper 2 (Core)

**October/November 2010**

**1 hour 15 minutes**

Candidates answer on the Question Paper.

No Additional Materials are required.

**READ THESE INSTRUCTIONS FIRST**

Write your Centre number, candidate number and name on all the work you hand in.

Write in dark blue or black pen.

You may use a soft pencil for any diagrams, graphs, tables or rough working.

Do not use staples, paper clips, highlighters, glue or correction fluid.

**DO NOT WRITE IN ANY BARCODES.**

Answer **all** questions.

A copy of the Periodic Table is printed on page 24.

At the end of the examination, fasten all your work securely together.

The number of marks is given in brackets [ ] at the end of each question or part question.

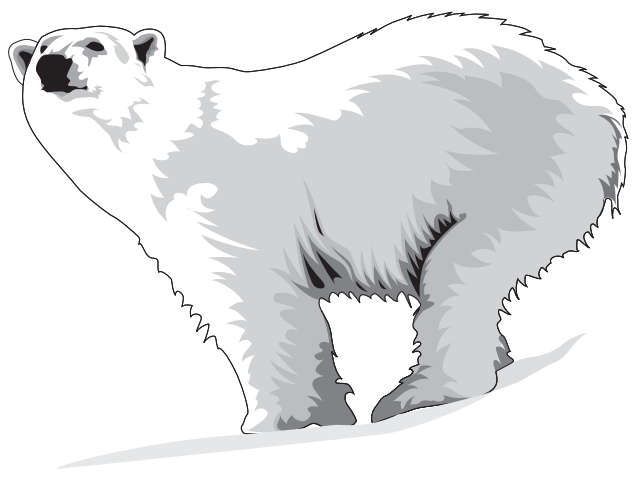
For Examiner's Use	
1	
2	
3	
4	
5	
6	
7	
8	
9	
10	
<b>Total</b>	

This document consists of **21** printed pages and **3** blank pages.





1 (a) Polar bears live in the cold, arctic region. They have thick, white fur.



Describe how fur keeps a polar bear warm.

.....  
.....  
..... [2]

(b) (i) Above the arctic region the ozone layer is decreasing, allowing more ultraviolet radiation, which can cause chemical changes, to reach the surface of the Earth.

State **one** danger to human beings of being exposed to large quantities of ultraviolet radiation.

..... [1]

(ii) Ultraviolet radiation is part of the electromagnetic spectrum.

Name **one** other radiation which is part of the electromagnetic spectrum and state a use of this radiation.

name .....

use ..... [2]

2 (a) The apparatus shown in Fig. 2.1 can be used to react lead oxide and carbon.

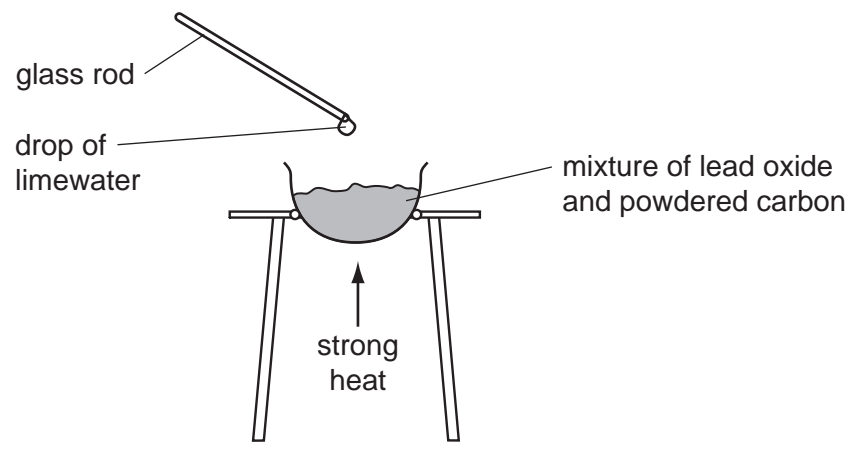


Fig. 2.1

When the mixture is heated, molten metal is formed in the container and the drop of lime water on the end of the glass rod becomes cloudy.

(i) Suggest the **word** equation for the reaction between lead oxide and carbon. Do **not** write a symbolic equation.

..... [2]

(ii) State **one** substance, shown in your equation in (i), which is a compound.

Explain why this substance is described as a compound and **not** as an element.

substance .....

explanation .....

.....

..... [3]

(b) Fig. 2.2 shows some of the apparatus used in the electrolysis of copper chloride solution.

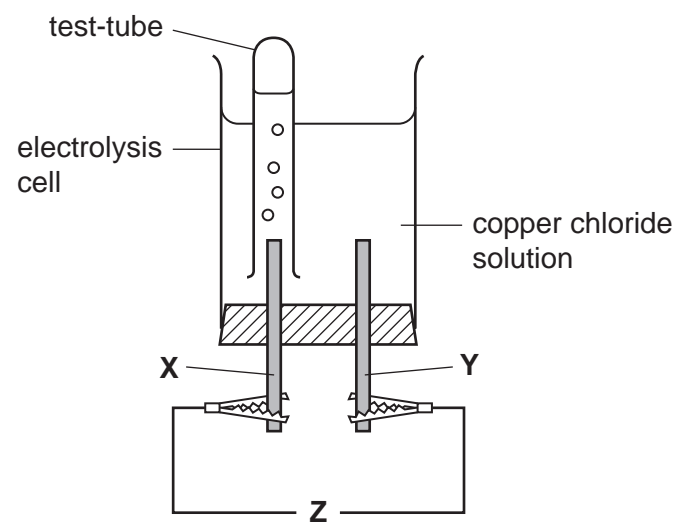


Fig. 2.2

(i) What is missing from position Z in Fig. 2.2?

..... [1]

(ii) Name the gas which collects in the test-tube, and explain whether electrode X is the anode or the cathode.

gas .....

Electrode X is the ..... because .....

.....

..... [2]

3 A healthy plant growing in a pot was watered and placed in a sunny window. A transparent plastic bag was placed over the plant, as shown in Fig. 3.1.

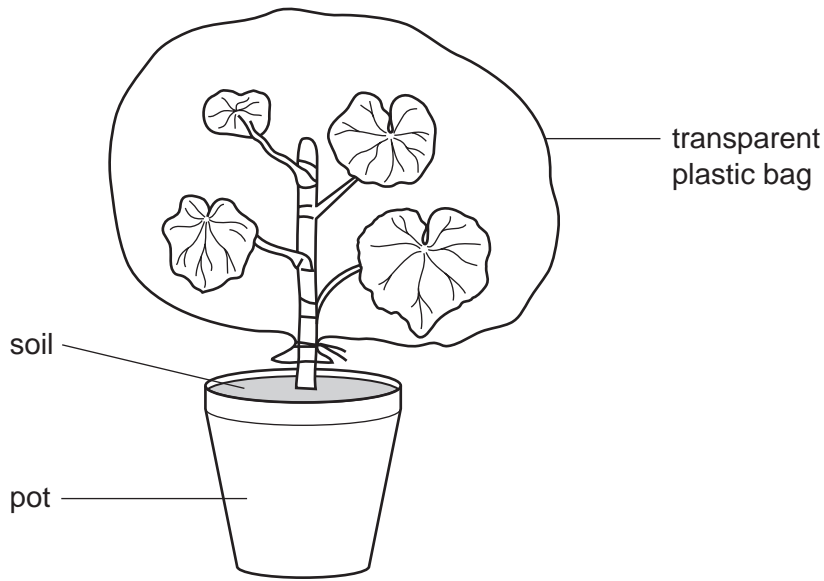


Fig. 3.1

(a) The temperature near the window fell overnight. The next morning, small droplets of liquid water were visible on the inside of the plastic bag.

(i) Name the process by which plant leaves lose water vapour.

..... [1]

(ii) Name the small holes in the leaf through which the water vapour is lost.

..... [1]

(iii) Explain why the water formed droplets of liquid on the plastic bag.

.....  
.....  
..... [2]

(b) Fig. 3.2 shows a cell from the plant leaf.

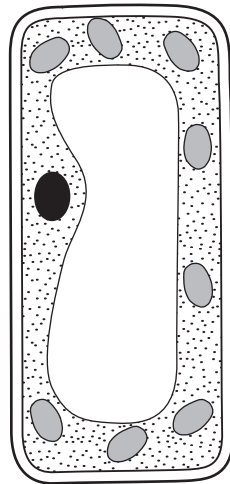


Fig. 3.2

(i) On the diagram of the cell in Fig. 3.2, label and name **two** structures that would **not** be present in an animal cell. [2]

(ii) Name the part of the leaf in which this cell could be found.

..... [1]

(iii) The cell in Fig. 3.2 can photosynthesise.

Write the word equation for photosynthesis.



[2]

4 (a) Fig. 4.1 shows the speed-time graph for a train.

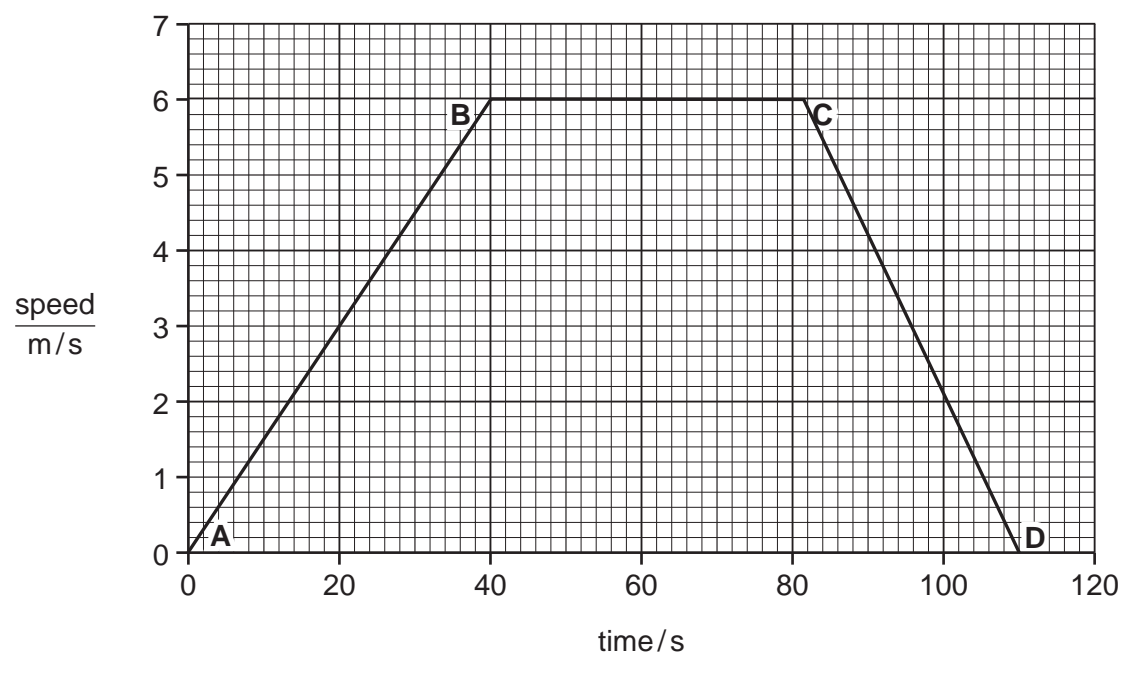


Fig. 4.1

The brakes are applied at C. Calculate how long it takes the train to stop.

.....s [1]

(b) Another train, on a journey lasting 10 minutes, travelled at a constant speed of 9 m/s.

(i) Show that the distance travelled by the train during this journey was 5400 m.

State the formula that you use and show your working.

formula used

working

[2]



9

(ii) The average force needed for the train to maintain the speed of 9 m/s was 10

Calculate the work done by the train over 10 minutes.

State the formula that you use and show your working.

formula used

working

..... J [2]

5 Fig. 5.1 shows some stages in the formation of a human fetus.

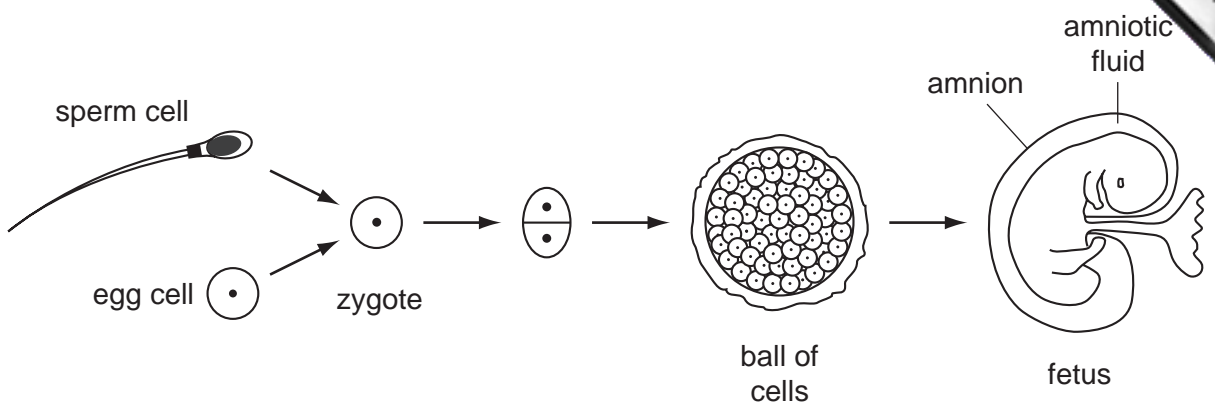


Fig. 5.1

(a) Most human cells contain 46 chromosomes, but egg cells and sperm cells contain only 23 chromosomes each.

Suggest a reason for this.

.....  
 ..... [1]

(b) Name the part of the reproductive system in which each of these events takes place.

(i) Eggs are produced. .... [1]

(ii) Fertilisation. .... [1]

(c) Describe the function of the amnion.

.....  
 .....  
 ..... [2]

(d) The fetus develops in the uterus.

It is attached to the uterus by the umbilical cord and placenta.

It obtains nutrients from its mother's blood, through the placenta.

Suggest why a pregnant woman should have more iron and calcium in her diet than when she is not pregnant.

iron .....

.....

calcium .....

.....

[3]

6 (a) Electrical equipment can be dangerous, especially when it is handled with wet hands. Explain why you are quite likely to be electrocuted if you handle an electrical device with wet hands rather than dry hands.

.....  
..... [1]

(b) Fig. 6.1 shows a simple electric circuit.

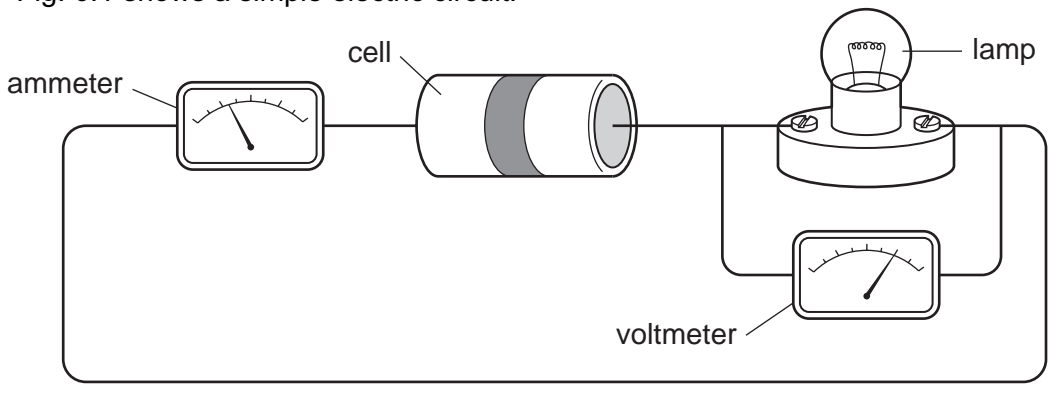


Fig. 6.1

Draw the circuit diagram for the circuit in Fig. 6.1 using the correct symbols.

[3]

(c) Fig. 6.2 shows a circuit built by a student.

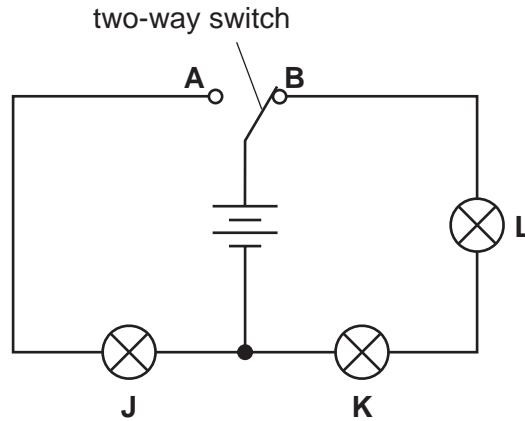


Fig. 6.2

(i) The switch is at position **B**.

Which lamps will be lit? .....

[1]

(ii) The switch is then moved to position **A**.

What happens to lamps **J, K** and **L**?

lamp **J** .....

lamp **K** .....

lamp **L** .....

[2]

(d) The student has six resistors as shown in Fig.6.3.

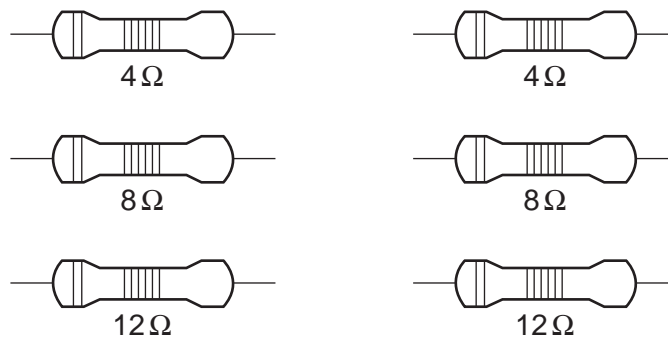


Fig.6.3

Describe how he can combine **two** of these resistors to get a total resistance of 20 ohms.

.....  
.....

[1]

(e) Power stations produce electricity.

Six stages in the production of electricity at a coal-fired power station are shown below.

- A electricity produced
- B coal burned
- C steam produced
- D turbine driven by steam
- E turbine turns generator
- F water boils

Using the letters **A** to **F**, list the stages in the correct order in the boxes below. Two have been done for you.

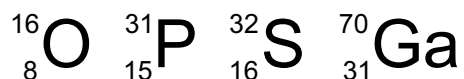


[2]



Please turn over for Question 7.

- 7 (a) The chemical symbols for the atoms shown below include proton (atomic) number and nucleon (mass) numbers.



- (i) State which of these symbols represent atoms of elements in the same **group** of the Periodic Table

..... [1]

- (ii) Complete Table 7.1 which shows the names and the numbers of protons and neutrons in two of the atoms shown above.

Table 7.1

element name	protons	neutrons
oxygen		
	15	16

[2]

- (b) Chlorine and hydrogen combine to form hydrogen chloride which dissolves in water to produce hydrochloric acid.

- (i) Suggest a substance which reacts with hydrochloric acid to form the salt, copper chloride.

..... [1]

- (ii) Suggest an element from the third period of the Periodic Table which reacts **safely** with hydrochloric acid to produce hydrogen gas.

..... [1]



(c) Ethene is a gaseous compound of carbon and hydrogen.

Fig. 7.2 shows two different chemical reactions, 1 and 2, involving ethene.

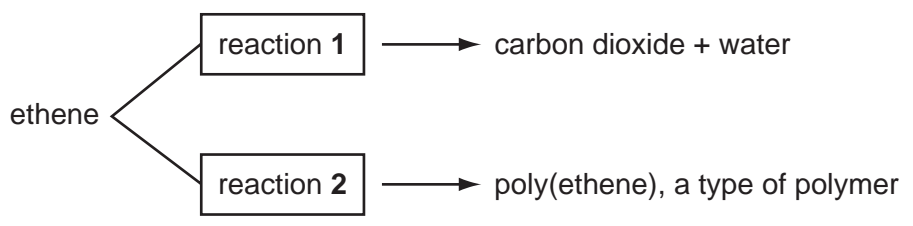


Fig.7.2

(i) For reactions 1 and 2, deduce the type of chemical reaction which occurs.

reaction 1 .....

reaction 2 ..... [2]

(ii) For reaction 2, describe briefly what happens to the molecules of ethene during the reaction.

.....  
..... [1]

8 Soya beans are an important crop in many tropical and subtropical countries, because they contain a lot of protein.

(a) Fig. 8.1 shows how the yield of soya beans is affected by the pH of the soil in which they are grown.

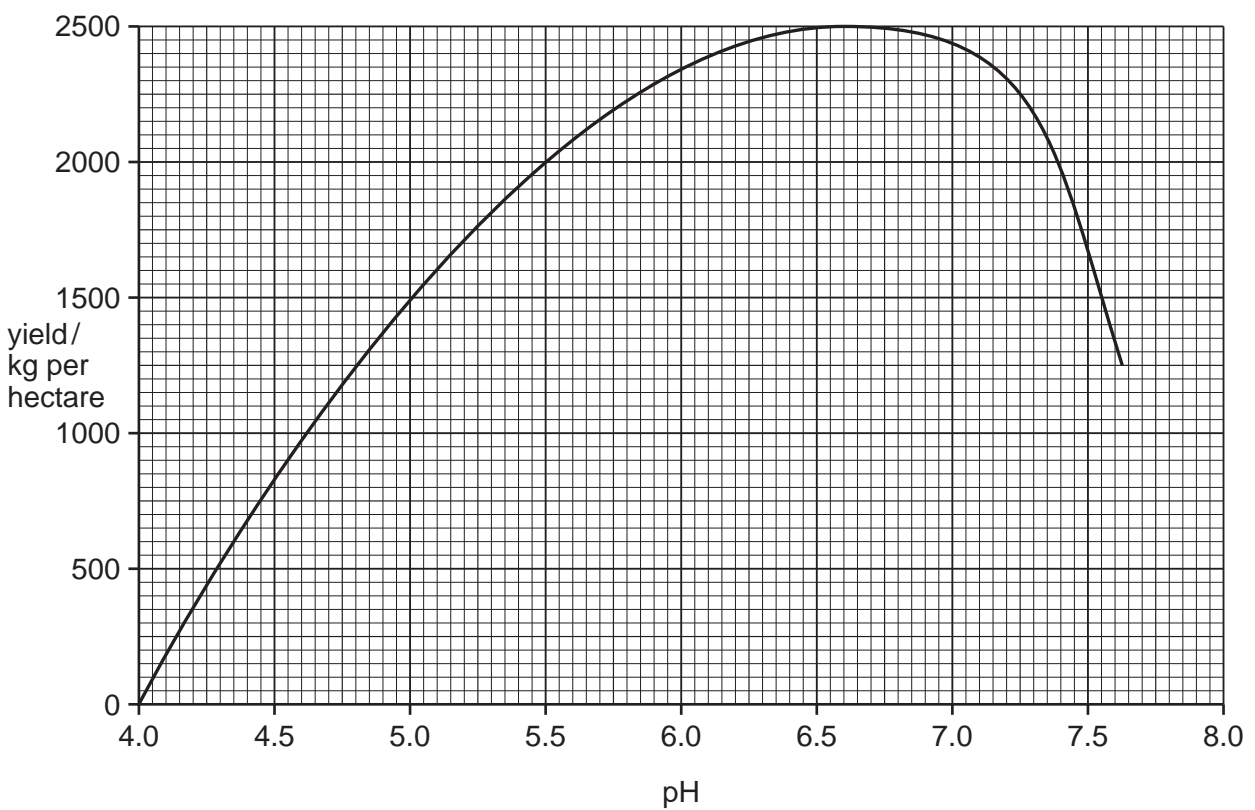


Fig. 8.1

A farmer grows soya beans in a field where the soil has a pH of 5.5.

(i) What yield of beans could he get from his crop?

..... kg per hectare [1]

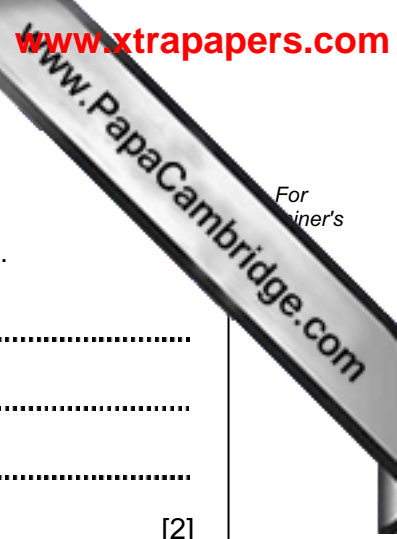
(ii) State the pH range in which soya beans grow best.

between ..... and ..... [1]

(iii) The farmer decides to add calcium carbonate to the soil in his field.

Explain why this would help him to achieve a higher yield of soya beans.

.....  
.....  
..... [2]



(b) The field is on a steep slope.

Describe **two** things the farmer could do to reduce the risk of soil erosion.

1 .....

.....

2 .....

..... [2]

(c) Soya beans are seeds. They grow after the flowers on the soya plants have been pollinated.

(i) Soya flowers often have violet-coloured petals.

Suggest how soya flowers are pollinated.

..... [1]

(ii) Explain why soya beans only grow after the flowers have been pollinated.

.....

.....

..... [2]

(iii) Describe how you would test a soya bean seed for protein. State the result you would expect.

test .....

.....

result ..... [2]

9 (a) Complete Table 9.1 to show the properties of alpha, beta and gamma radiations.

Table 9.1

	<b>description</b>	<b>charge</b>	<b>range in air</b>	<b>ionising ability</b>
alpha		positive	5 cm	very strong
beta	electron		50 cm	
gamma	wave		many kilometres	weak

[4]

(b) Many people have smoke detectors in their houses.

Smoke detectors contain a radioactive source which emits alpha radiation.

Explain why the alpha radiation from the smoke detector is not dangerous to people living in the house.

.....

.....

..... [1]

10 In many countries, river water is collected and treated to make it safe for humans to drink.  
(a) State and explain which **two** of the processes shown below are used to treat river water so that it becomes safe to drink.

- adding chlorine
- chromatography
- evaporation
- filtration

first process .....

explanation .....

.....

second process .....

explanation .....

..... [4]

(b) Sulfur dioxide is a gaseous compound which is released into the air when fossil fuels containing sulfur compounds are burned.

(i) Describe how sulfur dioxide gas could cause pollution of water in rivers and lakes.

.....

.....

.....

..... [3]

(ii) Suggest **one** way in which sulfur dioxide emissions into the atmosphere are being reduced.

.....

..... [1]

(c) Fig. 10.1 shows a diagram of a water molecule, H<sub>2</sub>O.

Choose words or phrases from the following list to complete the labelling of the diagram.

- covalent bond
- nucleus
- hydrogen atom
- oxygen atom
- ionic bond
- proton

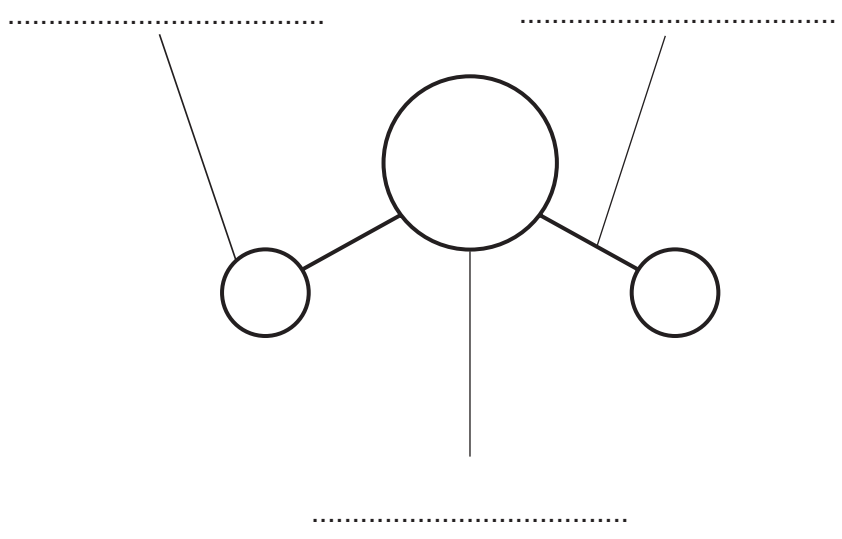


Fig. 10.1

[3]



**DATA SHEET**  
**The Periodic Table of the Elements**

		Group																		
		I	II	III	IV	V	VI	VII	VIII	IX	X									
		1 <b>H</b> Hydrogen 1																		
		4 <b>He</b> Helium 2																		
7	9	3 <b>Li</b> Lithium 4	4 <b>Be</b> Beryllium 9																	
23	24	11 <b>Na</b> Sodium 12	12 <b>Mg</b> Magnesium 24																	
39	40	19 <b>K</b> Potassium 38	20 <b>Ca</b> Calcium 40	21 <b>Sc</b> Scandium 45	22 <b>Ti</b> Titanium 48	23 <b>V</b> Vanadium 51	24 <b>Cr</b> Chromium 52	25 <b>Mn</b> Manganese 55	26 <b>Fe</b> Iron 56	27 <b>Co</b> Cobalt 59	28 <b>Ni</b> Nickel 59	29 <b>Cu</b> Copper 64	30 <b>Zn</b> Zinc 65	31 <b>Ga</b> Gallium 70	32 <b>Ge</b> Germanium 73	33 <b>As</b> Arsenic 75	34 <b>Se</b> Selenium 79	35 <b>Br</b> Bromine 80	36 <b>Kr</b> Krypton 84	
85	86	37 <b>Rb</b> Rubidium 85	38 <b>Sr</b> Strontium 88	39 <b>Y</b> Yttrium 89	40 <b>Zr</b> Zirconium 91	41 <b>Nb</b> Niobium 93	42 <b>Mo</b> Molybdenum 96	43 <b>Tc</b> Technetium 98	44 <b>Ru</b> Ruthenium 101	45 <b>Rh</b> Rhodium 103	46 <b>Pd</b> Palladium 106	47 <b>Ag</b> Silver 108	48 <b>Cd</b> Cadmium 112	49 <b>In</b> Indium 115	50 <b>Sn</b> Tin 119	51 <b>Sb</b> Antimony 122	52 <b>Te</b> Tellurium 128	53 <b>I</b> Iodine 127	54 <b>Xe</b> Xenon 131	
133	137	55 <b>Cs</b> Caesium 87	56 <b>Ba</b> Barium 137	57 <b>La</b> Lanthanum 139	72 <b>Hf</b> Hafnium 178	73 <b>Ta</b> Tantalum 181	74 <b>W</b> Tungsten 184	75 <b>Re</b> Rhenium 186	76 <b>Os</b> Osmium 190	77 <b>Ir</b> Iridium 192	78 <b>Pt</b> Platinum 195	79 <b>Au</b> Gold 197	80 <b>Hg</b> Mercury 201	81 <b>Tl</b> Thallium 204	82 <b>Pb</b> Lead 207	83 <b>Bi</b> Bismuth 209	84 <b>Po</b> Polonium 209	85 <b>At</b> Astatine 210	86 <b>Rn</b> Radon 222	
87	88	87 <b>Fr</b> Francium 87	88 <b>Ra</b> Radium 226	89 <b>Ac</b> Actinium 227																
		*58-71 Lanthanoid series †90-103 Actinoid series																		
140	141	58 <b>Ce</b> Cerium 140	59 <b>Pr</b> Praseodymium 141	60 <b>Nd</b> Neodymium 144	61 <b>Pm</b> Promethium 147	62 <b>Sm</b> Samarium 150	63 <b>Eu</b> Europium 152	64 <b>Gd</b> Gadolinium 157	65 <b>Tb</b> Terbium 159	66 <b>Dy</b> Dysprosium 162	67 <b>Ho</b> Holmium 165	68 <b>Er</b> Erbium 167	69 <b>Tm</b> Thulium 169	70 <b>Yb</b> Ytterbium 173	71 <b>Lu</b> Lutetium 175					
		a = relative atomic mass X = atomic symbol b = proton (atomic) number																		
232	238	90 <b>Th</b> Thorium 232	91 <b>Pa</b> Protactinium 231	92 <b>U</b> Uranium 238	93 <b>Np</b> Neptunium 237	94 <b>Pu</b> Plutonium 244	95 <b>Am</b> Americium 243	96 <b>Cm</b> Curium 247	97 <b>Bk</b> Berkelium 247	98 <b>Cf</b> Californium 251	99 <b>Es</b> Einsteinium 252	100 <b>Fm</b> Fermium 257	101 <b>Md</b> Mendelevium 258	102 <b>No</b> Nobelium 259	103 <b>Lr</b> Lawrencium 260					

The volume of one mole of any gas is 24 dm<sup>3</sup> at room temperature and pressure (r.t.p.).

Permission to reproduce items where third-party owned material protected by copyright is included has been sought and cleared where possible. Every reasonable effort has been made by the publisher (UCLES) to trace copyright holders, but if any items requiring clearance have unwittingly been included, the publisher will be pleased to make amends at the earliest possible opportunity.

University of Cambridge International Examinations is part of the Cambridge Assessment Group. Cambridge Assessment is the brand name of University of