



Cambridge IGCSE™

CANDIDATE
NAME

CENTRE
NUMBER

--	--	--	--	--

CANDIDATE
NUMBER

--	--	--	--



COMBINED SCIENCE

0653/32

Paper 3 Theory (Core)

October/November 2020

1 hour 15 minutes

You must answer on the question paper.

No additional materials are needed.

INSTRUCTIONS

- Answer **all** questions.
- Use a black or dark blue pen. You may use an HB pencil for any diagrams or graphs.
- Write your name, centre number and candidate number in the boxes at the top of the page.
- Write your answer to each question in the space provided.
- Do **not** use an erasable pen or correction fluid.
- Do **not** write on any bar codes.
- You may use a calculator.
- You should show all your working and use appropriate units.

INFORMATION

- The total mark for this paper is 80.
- The number of marks for each question or part question is shown in brackets [].
- The Periodic Table is printed in the question paper.

This document has **20** pages. Blank pages are indicated.

1 (a) Fig. 1.1 shows a food web for a pond habitat.

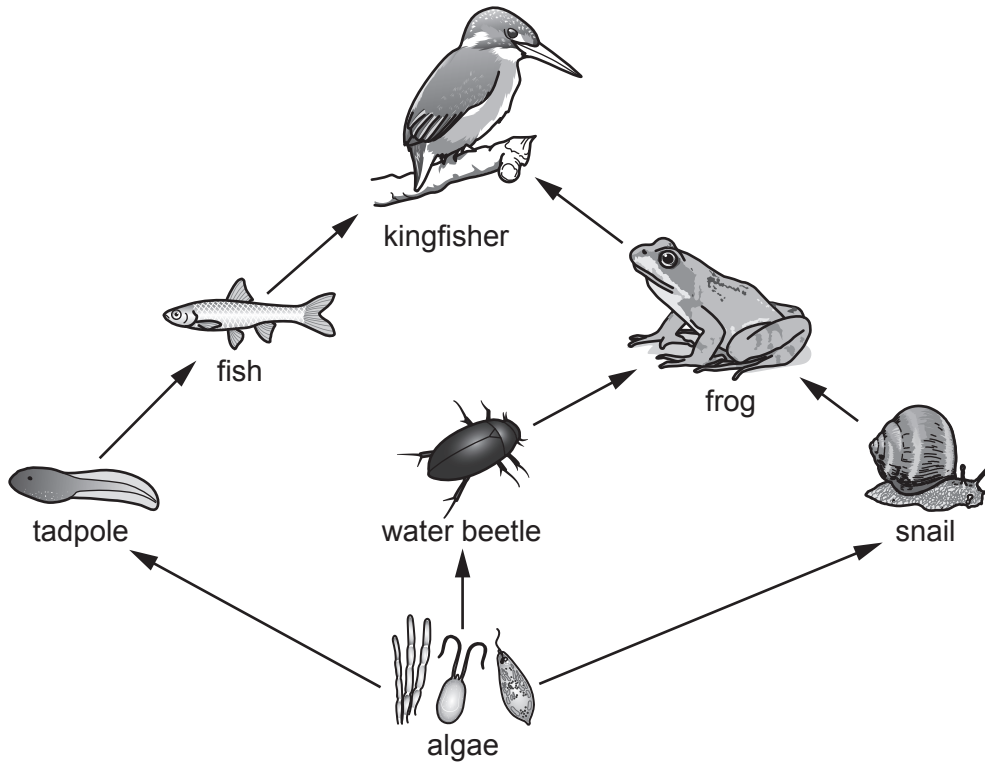


Fig. 1.1

(i) Identify the producer shown in Fig. 1.1.

..... [1]

(ii) State the process used by producers to make glucose using energy from sunlight.

..... [1]

(iii) Identify **one** carnivore shown in Fig. 1.1.

..... [1]

(iv) Use the information in Fig. 1.1 to construct a food chain including the frog.

..... [1]

(b) Decomposers are also found in pond habitats.

Define a *decomposer*.

.....
 [1]

- 2 (a) Brass is a mixture of copper and zinc.

The water tap in Fig. 2.1 is made of brass.

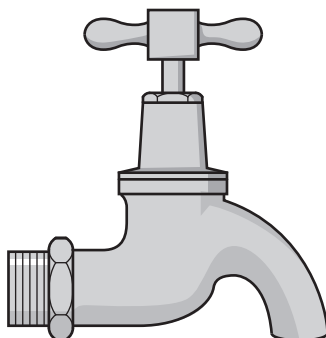


Fig. 2.1

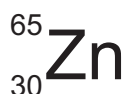
- (i) Name the type of substance that contains a metal mixed with other elements.

..... [1]

- (ii) Suggest **one** property of brass that makes it suitable for use as a water tap.

..... [1]

- (b) An atom of zinc is represented by the symbol shown.



- (i) Deduce the number of neutrons in this atom of zinc.

number of neutrons = [1]

- (ii) State the number of electrons in this atom of zinc.

number of electrons = [1]

- (iii) Zinc atoms form zinc ions, Zn^{2+} .

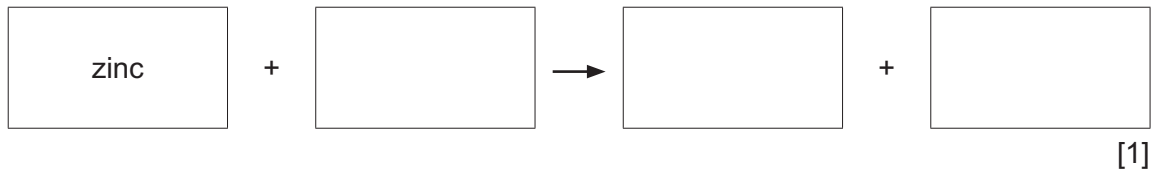
Deduce the number of electrons in a Zn^{2+} ion.

number of electrons = [1]

5

(c) Zinc reacts with dilute hydrochloric acid to form zinc chloride and hydrogen.

(i) Complete the word equation for this reaction.



(ii) Zinc chloride contains twice as many chloride ions as zinc ions.

Deduce the formula of zinc chloride.

.....

[1]

[Total: 7]

- 3 (a) Fig. 3.1 shows the forces acting on a wheelbarrow full of sand as a man pushes it along a straight path at a constant speed.

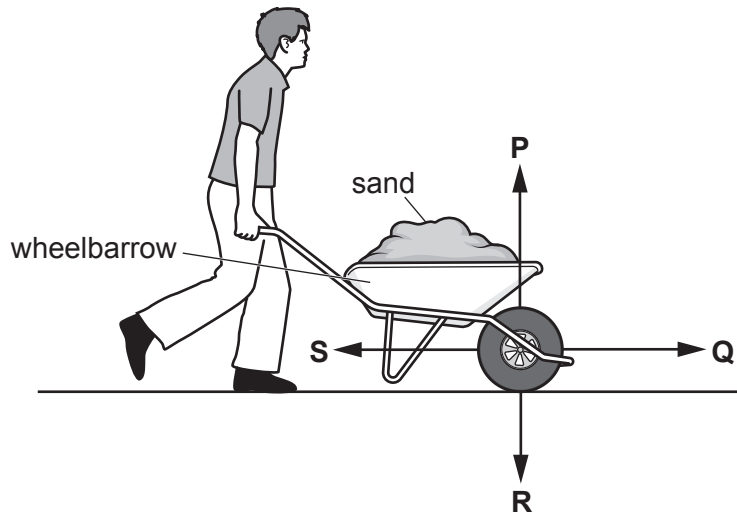


Fig. 3.1

- (i) State the letter, **P**, **Q**, **R** or **S**, of the force due to the man pushing the wheelbarrow.

..... [1]

- (ii) State the letter, **P**, **Q**, **R** or **S**, of the force due to friction.

..... [1]

- (iii) State whether the two forces in (i) and (ii) are equal in size.

Give a reason for your answer.

.....

 [1]

- (b) Fig. 3.2 shows the distance–time graph for the man pushing the wheelbarrow along the straight path.

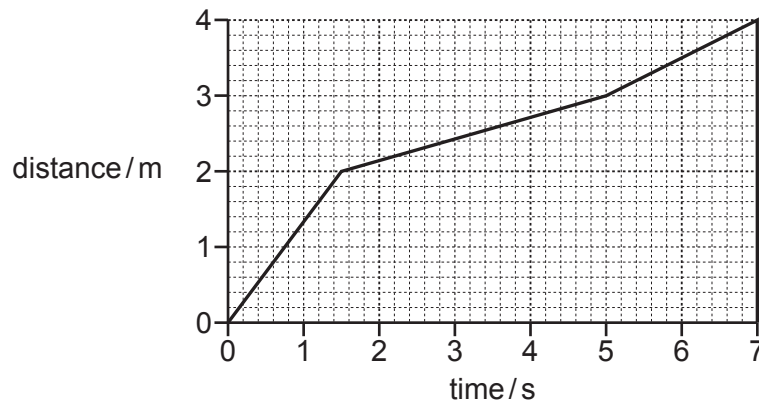
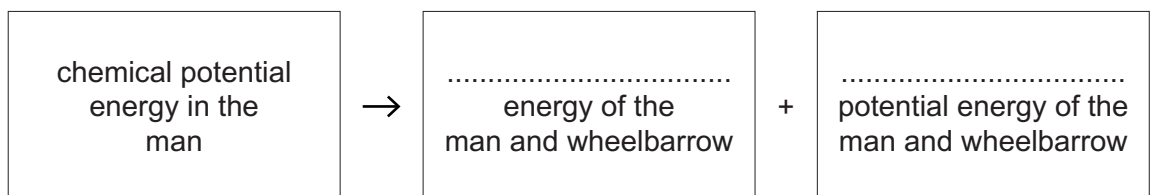


Fig. 3.2

- (i) On Fig. 3.2, draw an **X** on the graph to show a point when the man and wheelbarrow change speed. [1]
- (ii) On Fig. 3.2, draw a **Y** on the graph to show a point when the man and wheelbarrow are moving at maximum speed. [1]
- (c) The man pushes the wheelbarrow full of sand up a slope.

- (i) Complete the sequence of **useful** energy changes.



[2]

- (ii) Not all the energy changes taking place are useful. Some energy is lost as thermal energy.

Identify **two** ways that energy is lost as thermal energy.

1

2

[2]

- (d) The man pushes the wheelbarrow up the same slope again but this time with the wheelbarrow **empty**.

Explain why the man does less work on this second journey up the slope.

.....

..... [1]

[Total: 10]

4 (a) Fig. 4.1 shows a cross-section of a plant stem as seen under a microscope.

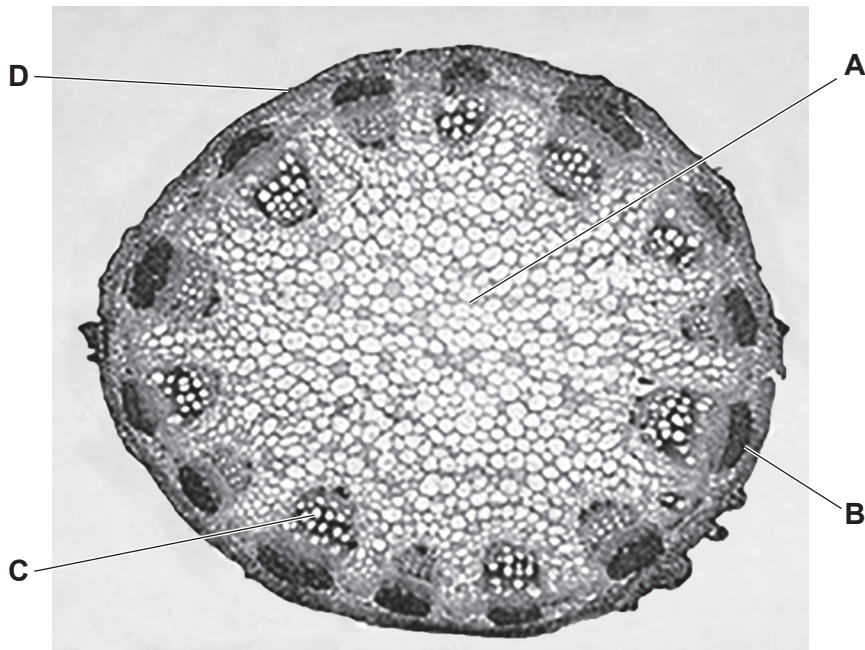


Fig. 4.1

(i) State the letter, **A**, **B**, **C** or **D**, that shows the position of xylem vessels in the plant stem in Fig. 4.1.

..... [1]

(ii) Name the cells that transport sugar through the plant stem.

..... [1]

(b) Use words from the list to complete the definition of *transpiration*.

Each word may be used once, more than once, or not at all.

- absorption diffusion egestion evaporation fusion**

Transpiration is the loss of water vapour from plant leaves by of water at the surface of the mesophyll cells followed by of water vapour through the stomata.

[2]

(c) Fig. 4.2 shows a plant that has been next to a window for a few weeks.



Fig. 4.2

(i) Name the tropic response shown by the plant in Fig. 4.2 that causes the plant to grow towards the light.

..... [1]

(ii) The plant has flowers with pink petals.

State the function of petals.

..... [1]

(d) Some responses in humans are controlled by hormones.

(i) Describe how hormones are transported to their target organs.

.....
.....
..... [2]

(ii) Adrenaline is a hormone.

Describe **two** effects of adrenaline on the body.

1
.....
2
.....
..... [2]

[Total: 10]

- 5 (a) In an experiment, carbon electrodes are used to pass an electric current through concentrated aqueous sodium chloride, as shown in Fig. 5.1.

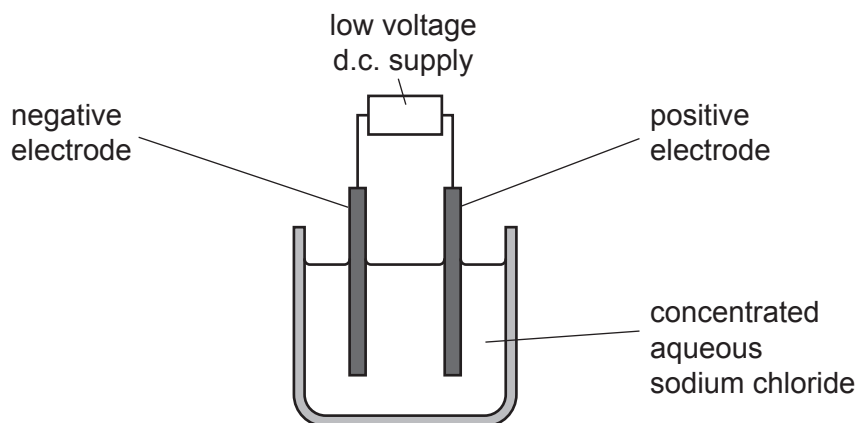


Fig. 5.1

- (i) Name the process shown in Fig. 5.1.
 [1]
- (ii) Identify the solvent in concentrated aqueous sodium chloride.
 [1]
- (iii) Identify the products which form at the negative electrode and at the positive electrode.
 negative electrode product
 positive electrode product [2]
- (iv) Name the negative electrode and the positive electrode.
 negative electrode
 positive electrode [2]

(b) Some metals are extracted from their ores by heating with carbon.

(i) Identify **one** metal that is extracted from its ore by this method.

..... [1]

(ii) In this extraction process, oxygen is removed from the metal.

State the type of chemical reaction that involves the loss of oxygen.

..... [1]

[Total: 8]

- 6 Fig. 6.1 shows a device called a 'solar still'. A solar still is used to produce fresh water from sea water.

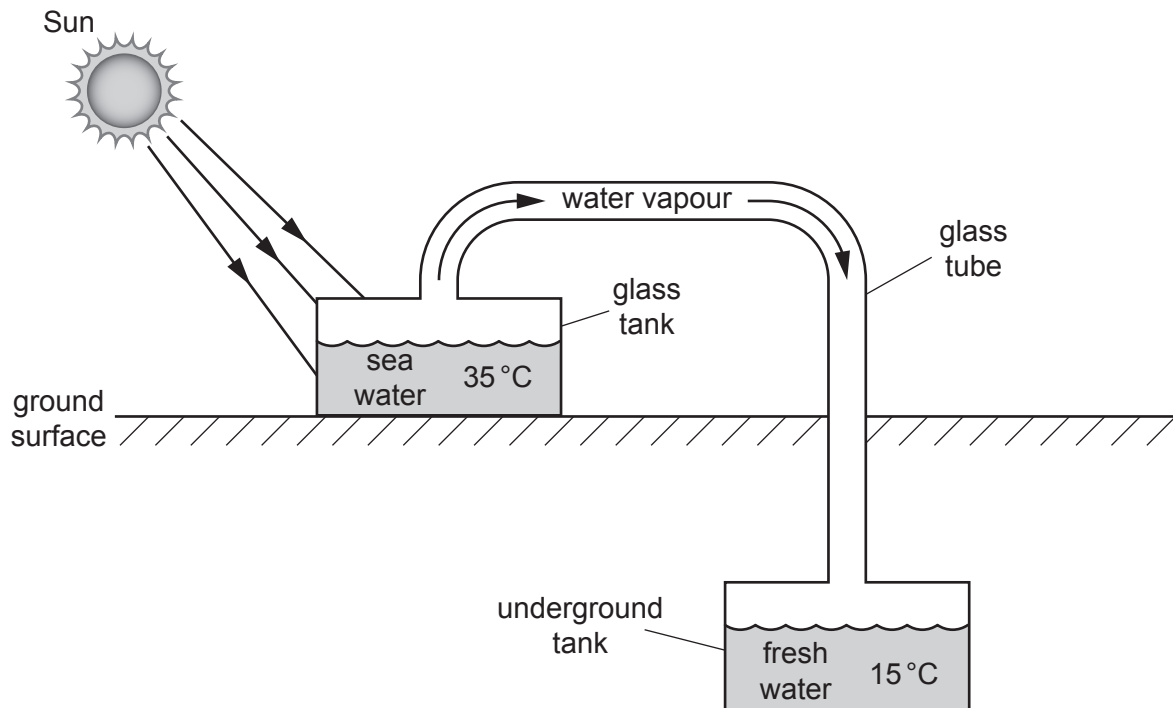


Fig. 6.1

Sea water is added to a glass tank. The glass tank is in full sunlight.

The temperature of the sea water in the glass tank increases to a maximum of 35 °C.

Water vapour travels through a glass tube to an underground tank. The water vapour cools and condenses.

Fresh water collects in the underground tank.

- (a) (i) Name the process that occurs at the surface of the sea water in the glass tank.

..... [1]

- (ii) State why some water molecules leave the surface of the sea water in this process.

.....

..... [1]

- (iii) State what happens to the temperature of the sea water remaining in the glass tank as a result of this process.

..... [1]

(b) State whether the sea water in the glass tank boils.

Give a reason for your answer.

.....
 [1]

(c) The sea water is heated by electromagnetic radiation from the Sun.

(i) Name the type of electromagnetic radiation involved in heating the sea water.

..... [1]

(ii) On Fig. 6.2, write a tick (✓) in the part of the electromagnetic spectrum where this type of radiation is found.

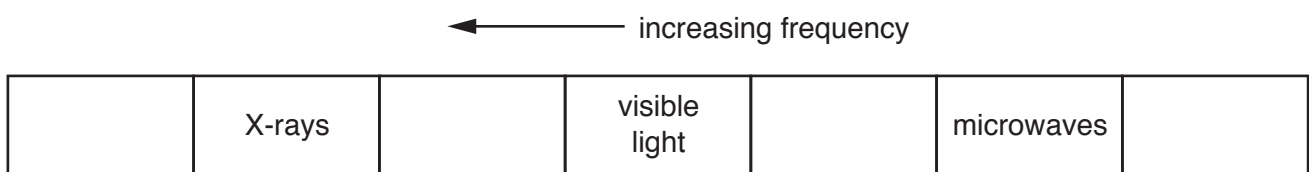


Fig. 6.2

[1]

(iii) State the meaning of *frequency*.

.....
 [1]

(d) Fig. 6.3 shows a ray from the Sun being refracted as it passes into the glass tank.

On Fig. 6.3, label the angle of incidence i and the angle of refraction r for the ray. [2]

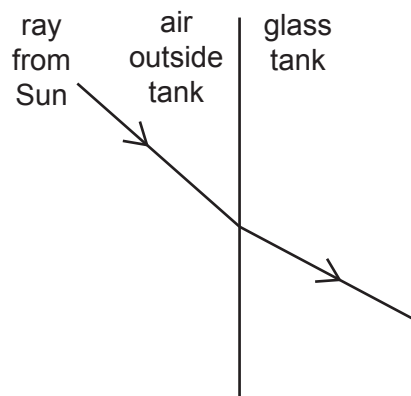


Fig. 6.3

[Total: 9]

- 7 (a) Fig. 7.1 shows parts of the human gas exchange system.

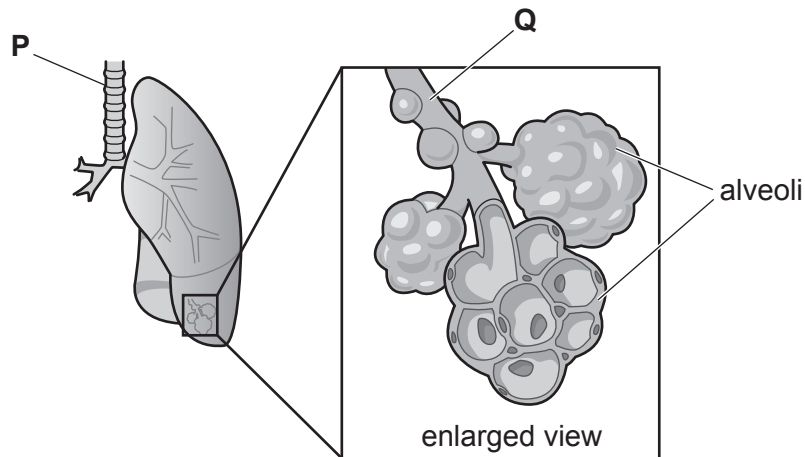


Fig. 7.1

Identify parts **P** and **Q** shown in Fig. 7.1.

P

Q [2]

- (b) The lungs remove carbon dioxide from the body. Excess carbon dioxide in the body is toxic.

State the characteristic of living organisms that removes toxic materials from the body.

..... [1]

- (c) The lungs are connected to the heart by blood vessels.

(i) Name the blood vessel that transports blood from the lungs to the heart.

..... [1]

(ii) Name the component of the blood that produces antibodies.

..... [1]

(d) Fig. 7.2 is a diagram of the female reproductive organs.

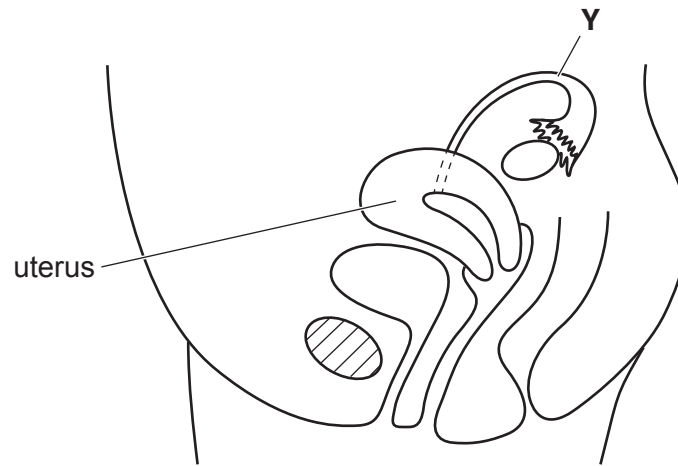


Fig. 7.2

(i) Draw an **X** on Fig. 7.2 to show where gametes are made. [1]

(ii) Name structure **Y** in Fig. 7.2.
..... [1]

(iii) Describe the changes that occur to the uterus lining during the first five days of the menstrual cycle.
.....
.....
..... [2]

[Total: 9]

8 (a) Methane, CH_4 , is an alkane.

(i) Methane is the main constituent of a fossil fuel.

Name this fossil fuel.

..... [1]

(ii) Name the type of chemical bonds in a molecule of methane.

..... [1]

(iii) Fig. 8.1 is an incomplete dot-and-cross diagram of a molecule of methane.

On Fig. 8.1, draw dots and crosses to show **all** of the outer shell electrons in a molecule of methane.

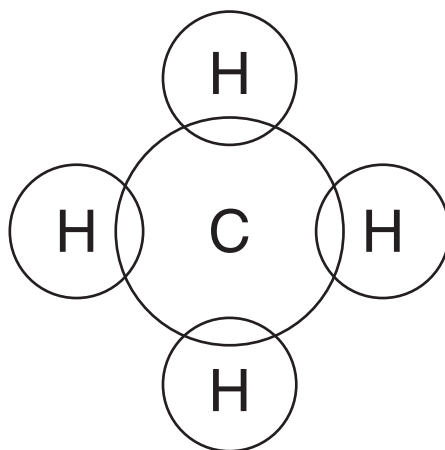


Fig. 8.1

[2]

(b) A sample of refinery gas contains only alkane molecules.

(i) Name the process used to obtain refinery gas from petroleum.

..... [1]

(ii) Describe the effect, if any, of this sample of refinery gas on aqueous bromine.

..... [1]

(c) Fossil fuels are used for heating.

- (i) State the type of chemical reaction that produces a temperature increase during the combustion of fossil fuels.

..... [1]

- (ii) Suggest the effect of the combustion of methane on the number of nitrogen molecules and on the number of oxygen molecules in a limited supply of air.

nitrogen molecules

oxygen molecules

[2]

- (iii) During the combustion of fossil fuels, carbon dioxide is produced.

State the test and the positive result for carbon dioxide.

test

result

[2]

[Total: 11]

- 9 The front door of a house has an electric bell and a lamp.
- The electric bell and lamp are connected in parallel to a 6.0 V battery.
 - One switch controls both the electric bell and the lamp.

Fig. 9.1 shows part of the circuit.

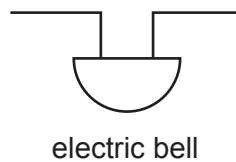
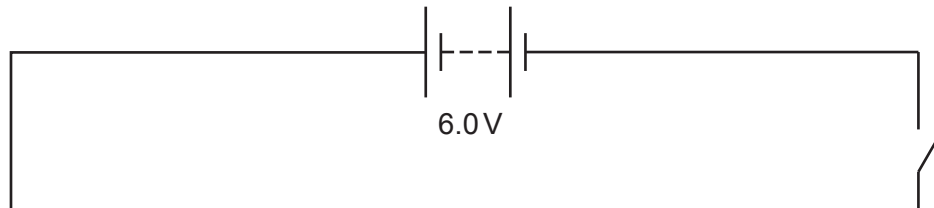


Fig. 9.1

- (a) (i) On Fig. 9.1, complete the circuit diagram. [2]
- (ii) Explain why a parallel connection allows the bell to ring even if the lamp is broken.

.....

..... [1]

- (b) A meter is needed to measure the potential difference (p.d.) across the bell.

On Fig. 9.1, draw the circuit symbol for this meter and show how the meter is connected to measure the p.d. across the bell. [2]

- (c) The bell is switched on.

There is a potential difference (p.d.) of 6.0V across the bell.

There is a current of 0.48A in the bell.

Calculate the resistance of the bell. Give the unit of your answer.

resistance = unit [3]

[Total: 8]

Permission to reproduce items where third-party owned material protected by copyright is included has been sought and cleared where possible. Every reasonable effort has been made by the publisher (UCLES) to trace copyright holders, but if any items requiring clearance have unwittingly been included, the publisher will be pleased to make amends at the earliest possible opportunity.

To avoid the issue of disclosure of answer-related information to candidates, all copyright acknowledgements are reproduced online in the Cambridge Assessment International Education Copyright Acknowledgements Booklet. This is produced for each series of examinations and is freely available to download at www.cambridgeinternational.org after the live examination series.

Cambridge Assessment International Education is part of the Cambridge Assessment Group. Cambridge Assessment is the brand name of the University of Cambridge Local Examinations Syndicate (UCLES), which itself is a department of the University of Cambridge.

The Periodic Table of Elements

		Group																																					
I	II											III	IV	V	VI	VII	VIII																						
3 Li lithium 7	4 Be beryllium 9	Key atomic number atomic symbol name relative atomic mass										5 B boron 11	6 C carbon 12	7 N nitrogen 14	8 O oxygen 16	9 F fluorine 19	10 Ne neon 20																						
11 Na sodium 23	12 Mg magnesium 24											1 H hydrogen 1	13 Al aluminium 27	14 Si silicon 28	15 P phosphorus 31	16 S sulfur 32	17 Cl chlorine 35.5	18 Ar argon 40	19 K potassium 39	20 Ca calcium 40	21 Sc scandium 45	22 Ti titanium 48	23 V vanadium 51	24 Cr chromium 52	25 Mn manganese 55	26 Fe iron 56	27 Co cobalt 59	28 Ni nickel 59	29 Cu copper 64	30 Zn zinc 65	31 Ga gallium 70	32 Ge germanium 73	33 As arsenic 75	34 Se selenium 79	35 Br bromine 80	36 Kr krypton 84			
37 Rb rubidium 85	38 Sr strontium 88	39 Y yttrium 89	40 Zr zirconium 91	41 Nb niobium 93	42 Mo molybdenum 96	43 Tc technetium —	44 Ru ruthenium 101	45 Rh rhodium 103	46 Pd palladium 106	47 Ag silver 108	48 Cd cadmium 112	49 In indium 115	50 Sn tin 119	51 Sb antimony 122	52 Te tellurium 128	53 I iodine 127	54 Xe xenon 131	55 Cs caesium 133	56 Ba barium 137	57–71 lanthanoids	72 Hf hafnium 178	73 Ta tantalum 181	74 W tungsten 184	75 Re rhenium 186	76 Os osmium 190	77 Ir iridium 192	78 Pt platinum 195	79 Au gold 197	80 Hg mercury 201	81 Tl thallium 204	82 Pb lead 207	83 Bi bismuth 209	84 Po polonium —	85 At astatine —	86 Rn radon —				
87 Fr francium —	88 Ra radium —	89–103 actinoids	104 Rf rutherfordium —	105 Db dubnium —	106 Sg seaborgium —	107 Bh bohrium —	108 Hs hassium —	109 Mt meitnerium —	110 Ds darmstadtium —	111 Rg roentgenium —	112 Cn copernicium —	113 Nh nihonium —	114 Fl flerovium —	115 Mc moscovium —	116 Lv livermorium —	117 Ts tennessine —	118 Og oganesson —	119 Uue unbinetium —	120 Uub ununbium —	121 Uut ununtrium —	122 Uuq ununquadium —	123 Uup ununpentium —	124 Uuq ununhexium —	125 Uuh ununheptium —	126 Uuq ununoctium —	127 Uuh ununnonium —	128 Uuo unundecium —	129 Uuh unundundecium —	130 Uuo ununtridecium —	131 Uuh ununquadecium —	132 Uuo ununpentadecium —	133 Uuh ununhexadecium —	134 Uuo ununseptadecium —	135 Uuh ununoctadecium —	136 Uuo ununnonadecium —	137 Uuo ununtriacontium —	138 Uuo ununtriacontium —	139 Uuo ununtriacontium —	140 Uuo ununtriacontium —

lanthanoids

actinoids

57 La lanthanum 139	58 Ce cerium 140	59 Pr praseodymium 141	60 Nd neodymium 144	61 Pm promethium —	62 Sm samarium 150	63 Eu europium 152	64 Gd gadolinium 157	65 Tb terbium 159	66 Dy dysprosium 163	67 Ho holmium 165	68 Er erbium 167	69 Tm thulium 169	70 Yb ytterbium 173	71 Lu lutetium 175
89 Ac actinium —	90 Th thorium 232	91 Pa protactinium 231	92 U uranium 238	93 Np neptunium —	94 Pu plutonium —	95 Am americium —	96 Cm curium —	97 Bk berkelium —	98 Cf californium —	99 Es einsteinium —	100 Fm fermium —	101 Md mendelevium —	102 No nobelium —	103 Lr lawrencium —

The volume of one mole of any gas is 24 dm³ at room temperature and pressure (r.t.p.).