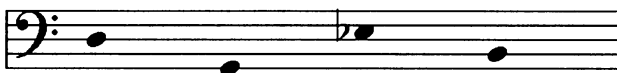
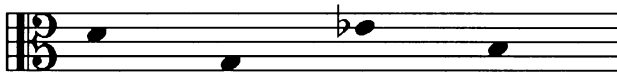


MUSIC**9800/02**

Paper 2 Extended Performing (Improvising)

May/June 2014**TEST A**

Prepare an improvisation based on the stimulus below. You may read from any of the three clefs shown, and may transpose the pattern to any pitch. You have up to 20 minutes' preparation time, during which you may play or sing as much as you like but may not make any written notes. Your final improvisation should not normally last for more than two minutes.



This document consists of **1** printed page and **1** blank page.

BLANK PAGE

Permission to reproduce items where third-party owned material protected by copyright is included has been sought and cleared where possible. Every reasonable effort has been made by the publisher (UCLES) to trace copyright holders, but if any items requiring clearance have unwittingly been included, the publisher will be pleased to make amends at the earliest possible opportunity.

Cambridge International Examinations is part of the Cambridge Assessment Group. Cambridge Assessment is the brand name of University of Cambridge Local Examinations Syndicate (UCLES), which is itself a department of the University of Cambridge.



Cambridge International Examinations
Cambridge Pre-U Certificate

MUSIC

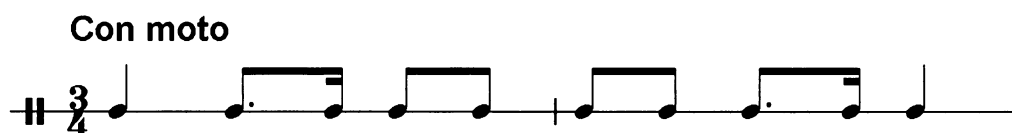
9800/02

Paper 2 Extended Performing (Improvising)

May/June 2014

TEST B

Prepare an improvisation based on the stimulus below. You have up to 20 minutes' preparation time, during which you may play or sing as much as you like but may not make any written notes. Your final improvisation should not normally last for more than two minutes.



This document consists of **1** printed page and **1** blank page.

BLANK PAGE

Permission to reproduce items where third-party owned material protected by copyright is included has been sought and cleared where possible. Every reasonable effort has been made by the publisher (UCLES) to trace copyright holders, but if any items requiring clearance have unwittingly been included, the publisher will be pleased to make amends at the earliest possible opportunity.

Cambridge International Examinations is part of the Cambridge Assessment Group. Cambridge Assessment is the brand name of University of Cambridge Local Examinations Syndicate (UCLES), which is itself a department of the University of Cambridge.



Cambridge International Examinations
Cambridge Pre-U Certificate

MUSIC

9800/02

Paper 2 Extended Performing (Improvising)

May/June 2014

TEST C

Prepare an improvisation based on the stimulus below. You have up to 20 minutes' preparation time, during which you may play or sing as much as you like but may not make any written notes. Your final improvisation should not normally last for more than two minutes.

If you sing or play a melodic instrument and wish to improvise over the chord sequence, a keyboard player may play these chords for you. The keyboard player may be present during the preparation time, but may not offer any advice.

$B\flat$ Gm Cm^7 F Gm $E\flat$ F^{sus4} F^7

This document consists of **1** printed page and **1** blank page.

BLANK PAGE

Permission to reproduce items where third-party owned material protected by copyright is included has been sought and cleared where possible. Every reasonable effort has been made by the publisher (UCLES) to trace copyright holders, but if any items requiring clearance have unwittingly been included, the publisher will be pleased to make amends at the earliest possible opportunity.

Cambridge International Examinations is part of the Cambridge Assessment Group. Cambridge Assessment is the brand name of University of Cambridge Local Examinations Syndicate (UCLES), which is itself a department of the University of Cambridge.

MUSIC**9800/02**

Paper 2 Extended Performing (Improvising)

May/June 2014

TEST D

Prepare an improvisation based on the stimulus below. You may read from any of the three clefs shown, and may transpose the pattern to any pitch. You have up to 20 minutes' preparation time, during which you may play or sing as much as you like but may not make any written notes. Your final improvisation should not normally last for more than two minutes.

Andante

The image shows three staves of musical notation for improvisation. The top staff is in treble clef, the middle in alto clef, and the bottom in bass clef. All are in G major and 6/8 time. The melody consists of: G4 (quarter), A4 (quarter), B4 (quarter), A4-G4 (beamed eighth notes), F#4 (quarter), E4 (quarter), D4 (quarter), C4 (quarter).

This document consists of **1** printed page and **1** blank page.

BLANK PAGE

Permission to reproduce items where third-party owned material protected by copyright is included has been sought and cleared where possible. Every reasonable effort has been made by the publisher (UCLES) to trace copyright holders, but if any items requiring clearance have unwittingly been included, the publisher will be pleased to make amends at the earliest possible opportunity.

Cambridge International Examinations is part of the Cambridge Assessment Group. Cambridge Assessment is the brand name of University of Cambridge Local Examinations Syndicate (UCLES), which is itself a department of the University of Cambridge.