



# Cambridge International AS & A Level

---

## GEOGRAPHY

9696/23

Paper 2 Core Human Geography

May/June 2025

INSERT

1 hour 30 minutes

---

### INFORMATION

- This insert contains all the resources referred to in the questions.
- You may annotate this insert and use the blank spaces for planning. **Do not write your answers** on the insert.



---

This document has 4 pages.

Table 1.1 for Question 1

## Population data for South America, 1960–2020

year	total population (million)	population growth rate (% per year)	life expectancy (years)	median age (years)
2020	431	1.3	76.2	31
2010	392	1.8	74.2	27
2000	348	2.4	71.2	24
1990	295	2.8	67.8	22
1980	240	2.8	64.3	20
1970	192	2.4	60.3	18
1960	149	2.1	56.1	18

Fig. 2.1 for Question 2

Rural population change in Spain, an HIC in Europe, 2007–2021

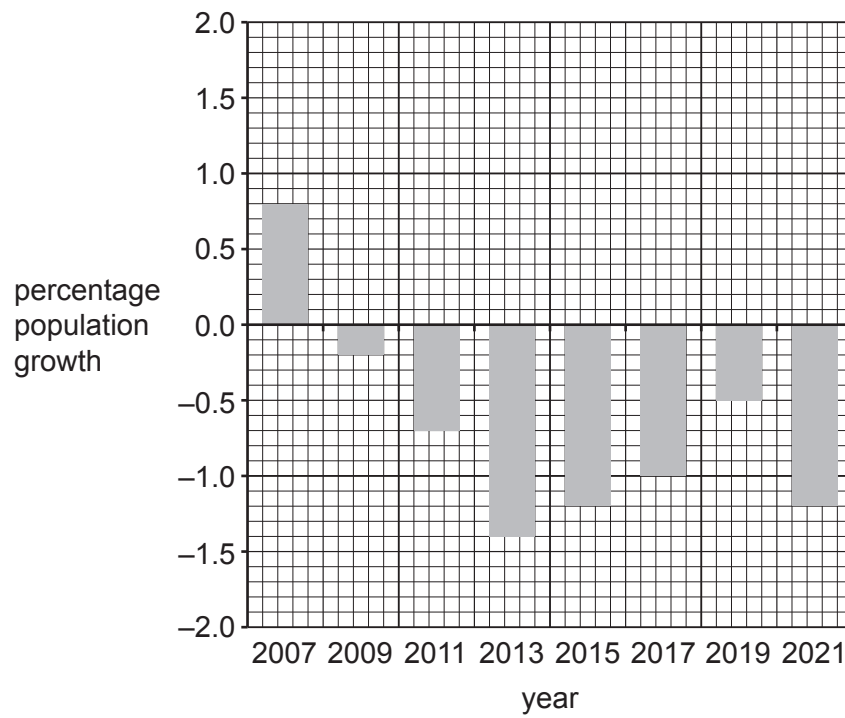
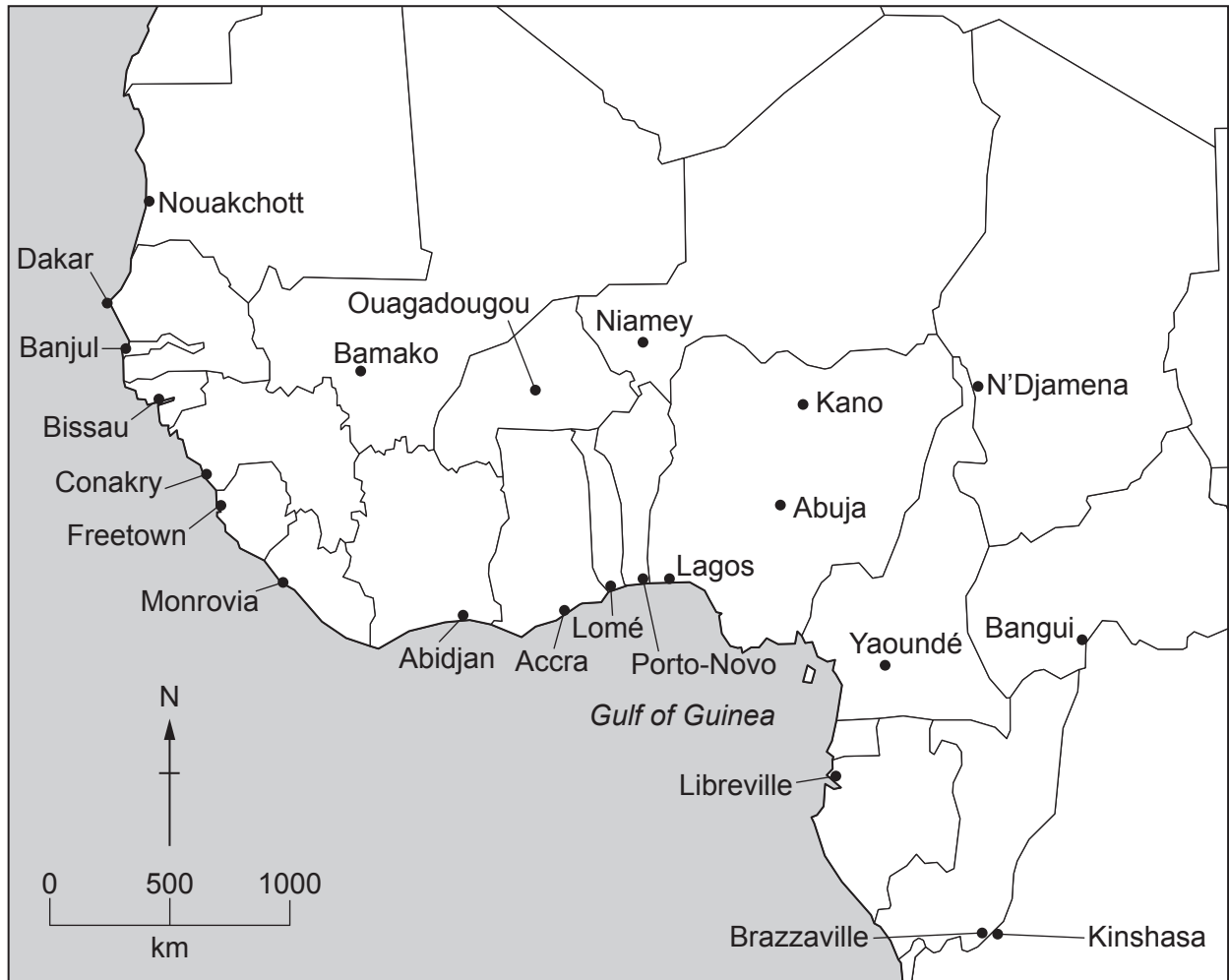


Fig. 3.1 for Question 3

## Major cities in western Africa



The boundaries and names shown, the designations used and the presentation of material on any maps contained in this question paper/insert do not imply official endorsement or acceptance by Cambridge Assessment International Education concerning the legal status of any country, territory, or area or any of its authorities, or of the delimitation of its frontiers or boundaries.

Permission to reproduce items where third-party owned material protected by copyright is included has been sought and cleared where possible. Every reasonable effort has been made by the publisher (UCLES) to trace copyright holders, but if any items requiring clearance have unwittingly been included, the publisher will be pleased to make amends at the earliest possible opportunity.

To avoid the issue of disclosure of answer-related information to candidates, all copyright acknowledgements are reproduced online in the Cambridge Assessment International Education Copyright Acknowledgements Booklet. This is produced for each series of examinations and is freely available to download at [www.cambridgeinternational.org](http://www.cambridgeinternational.org) after the live examination series.

Cambridge Assessment International Education is part of Cambridge Assessment. Cambridge Assessment is the brand name of the University of Cambridge Local Examinations Syndicate (UCLES), which is a department of the University of Cambridge.