



UNIVERSITY OF CAMBRIDGE INTERNATIONAL EXAMINATIONS  
International General Certificate of Secondary Education

CANDIDATE NAME

CENTRE NUMBER

CANDIDATE NUMBER

\* 5 2 6 3 9 6 6 8 5 7 \*

**COMPUTER STUDIES** **0420/12**  
Paper 1 **October/November 2012**  
**2 hours 30 minutes**

Candidates answer on the Question Paper.  
No Additional Materials are required.

**READ THESE INSTRUCTIONS FIRST**

Write your Centre number, candidate number and name on all the work you hand in.  
Write in dark blue or black pen.  
You may use a soft pencil for any diagrams, graphs or rough working.  
Do not use staples, paper clips, highlighters, glue or correction fluid.  
**DO NOT WRITE IN ANY BARCODES.**

Answer **all** questions.  
No marks will be awarded for using brand names of software packages or hardware.

At the end of the examination, fasten all your work securely together.  
The number of marks is given in brackets [ ] at the end of each question or part question.

<b>For Examiner's Use</b>

This document consists of **19** printed pages and **1** blank page.

2

1 Give **three** features of a data protection act.

1 .....  
.....  
2 .....  
.....  
3 .....  
..... [3]

2 Describe **four** of the stages in the creation of an expert system.

1 .....  
.....  
2 .....  
.....  
3 .....  
.....  
4 .....  
..... [4]

3 For each of the following five groups of hardware items, write down a computer application that would need those items.

List of hardware items	Application
webcam, microphone, speakers	
barcode reader, POS terminal	
pressure sensor, ADC, lights, siren	
data gloves, data goggles	
light pen, plotter, 3D printer	

[5]

4 A company has decided to introduce robots into its manufacturing process.

Give **three** benefits and **one** drawback to the company management.

Benefits

1 .....

.....

2 .....

.....

3 .....

.....

Drawback

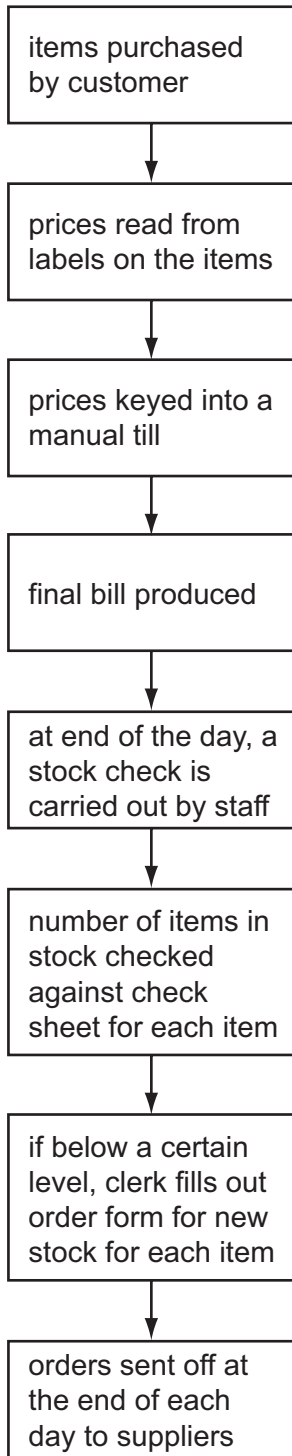
.....

..... [4]

5

**Flowchart A**

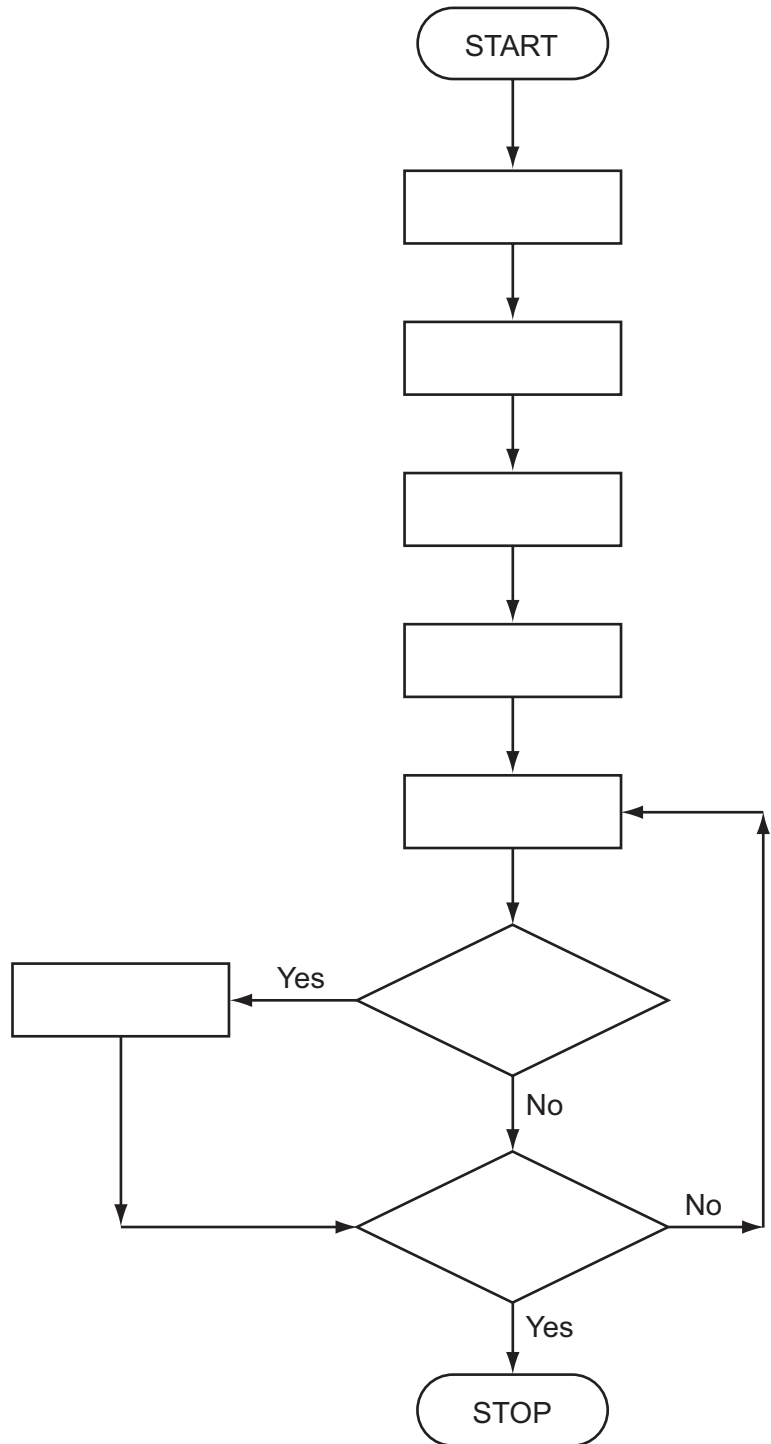
shows an existing manual system used by a shop to calculate a customer's bill and carry out stock control.



existing manual system

**Flowchart B**

shows the intended automatic computer-controlled system.



intended automatic computerised system

Using item numbers only from the following list, complete **Flowchart B**.

Item Number	Description
1	each item quantity reduced by 1 on the database
2	is stock level of item < = re-order level?
3	item price found on database
4	quantity of stock item checked against re-order level at end of the day
5	order for new stock of each item automatically sent out
6	barcode on each item scanned
7	have all items been checked?
8	an itemised bill is produced

[4]

6 State **three** different methods that allow people to communicate using the Internet.

In **each** case, give a different benefit for the stated method.

Method 1 .....

Benefit .....

.....

.....

Method 2 .....

Benefit .....

.....

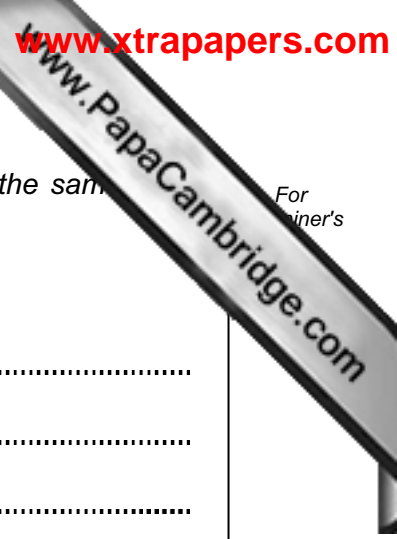
.....

Method 3 .....

Benefit .....

.....

..... [6]



7 (a) Lucy wrote: "I should validate the input into my database by typing in the same password twice".

Why was her statement incorrect?

.....  
.....  
.....  
..... [2]

(b) She lost all her photographs when her computer crashed.

(i) What is meant by the term *crashed*?

.....  
.....

(ii) How could she have avoided losing all her photographs?

.....  
..... [2]

(c) Lucy was sent an important attachment in an email, but couldn't open it.

Give a reason why she couldn't open the attachment.

.....  
.....  
..... [1]

(d) She decided to invest in a wireless (Wi-Fi) mouse and keyboard for her computer.

Give **one** benefit and **one** drawback of using wireless devices.

Benefit .....

Drawback .....

8 The following 2 pictures are images of the letter 'R' stored as bitmap files:

X



Y



(a) Why is picture X fuzzy?

.....  
.....  
..... [2]

(b) Even the sharp image in picture Y would become fuzzy if enlarged. Why would this happen?

.....  
.....  
..... [2]

(c) Name an output device that makes use of this imaging method.

..... [1]

(d) State a drawback of storing sharp quality bitmap image files.

.....  
..... [1]

9 A large company has decided to replace some of its European technical call centres. New call centres will be located in three developing countries around the world.

(a) Give **two** benefits of opening these new call centres.

1 .....

.....

.....

2 .....

.....

..... [2]

(b) Give **two** drawbacks of opening these new call centres.

1 .....

.....

.....

2 .....

.....

..... [2]

(c) Give **two** ways in which the workforce in the European call centres could be affected.

1 .....

.....

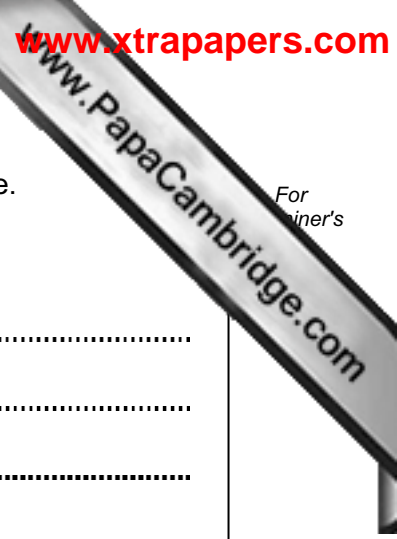
.....

2 .....

.....

..... [2]





(d) The staff at these new call centres use computers for long periods of time.

Give **two** potential health and safety risks to these staff.

1 .....

.....

.....

2 .....

.....

.....

..... [2]

10 A computer system is to have access to the Internet.

Name and describe **three** potential security issues.

Security issue 1 .....

Description .....

.....

.....

Security issue 2 .....

Description .....

.....

.....

Security issue 3 .....

Description .....

.....

.....

..... [6]

11 An alarm sounds when certain conditions occur in a nuclear reactor.

The output, X, of a logic circuit that drives the alarm must have a value of 1 if:

**either** carbon dioxide pressure too low **and** temperature  $\leq 300^{\circ}\text{C}$

**or** water pressure  $> 10$  bar **and** temperature  $> 300^{\circ}\text{C}$

The inputs to the system are:

Input	Binary	Condition
P	0	carbon dioxide pressure too low
	1	carbon dioxide pressure acceptable
T	0	temperature $> 300^{\circ}\text{C}$
	1	temperature $\leq 300^{\circ}\text{C}$
W	0	water pressure $> 10$ bar
	1	water pressure $\leq 10$ bar

(a) Draw the required logic circuit using AND, OR and NOT gates only.

[5]

(b) Complete the truth table for the above system.

P	T	W	X
0	0	0	
0	0	1	
0	1	0	
0	1	1	
1	0	0	
1	0	1	
1	1	0	
1	1	1	

[4]

12 (a) What is meant by the term *bit streaming*?

.....  
.....  
.....  
..... [2]

(b) John uses bit streaming to watch films from websites.

(i) Give **two** advantages of using bit streaming for this purpose.

1 .....  
.....  
2 .....  
..... [2]

(ii) Give **two** potential problems of using bit streaming for this purpose.

1 .....  
.....  
2 .....  
..... [2]

(c) Describe another application of bit streaming.

.....  
..... [1]



(b) Give **two** advantages of using this computer-controlled system rather than checks by the workforce.

1 .....

.....

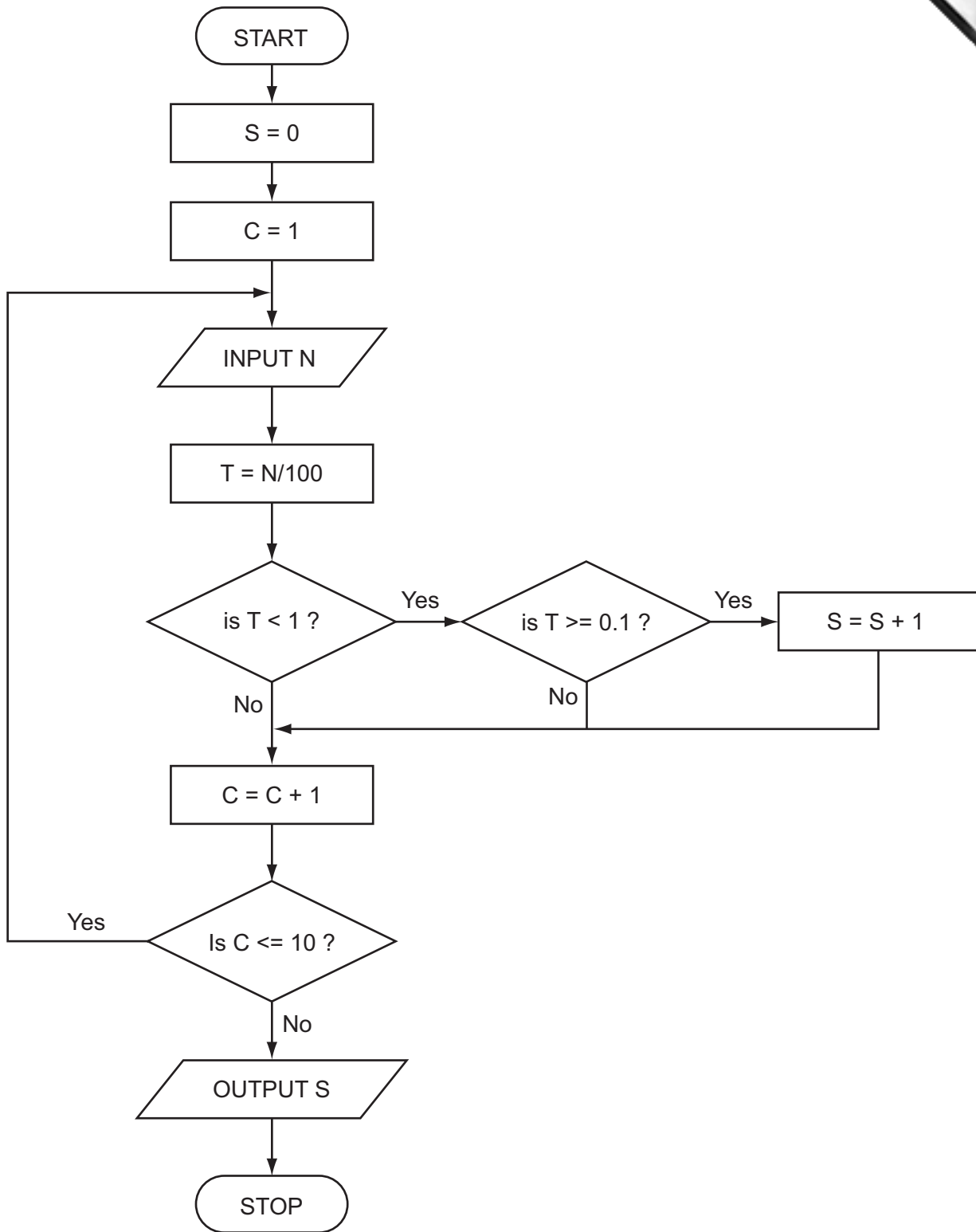
.....

2 .....

.....

..... [2]

14 Study the following flowchart very carefully.



Complete the trace table for the following data:

15, 8, 251, 35, 60, 3, 2, 1516, 19, 55

S	C	N	T	OUTPUT

[5]

15 A company organises music concerts. It has been decided to use a spreadsheet to find out how many nights each band must play at a venue to make a profit.

	A	B	C	D	E
1	Name of band	Booking fee (\$)	Cost per seat (\$)	Venue capacity	Minimum number of nights
2	Goo Goo Guys	300 000	20.00	10 000	1.5
3	Frozen Primates	1 520 000	40.00	20 000	1.9
4	The Cinnamon Girls	500 000	25.00	15 000	1.3
5	U235	2 400 000	50.00	20 000	2.4
6	Steal That	1 400 000	40.00	15 000	2.3
7					

(a) The minimum number of nights needed to make a profit is found by dividing the booking fee by the total nightly takings (assuming the venue is always full to capacity).

What formulas must be in column E?

	E
1	Minimum number of nights
2	
3	
4	
5	
6	

[2]

(b) What formula could be placed in cell C7 to find the average cost per seat?

.....

..... [1]

(c) To make a profit possible, it is necessary to **increase** the values in column E to the next whole number.

Describe how this could be done.

.....

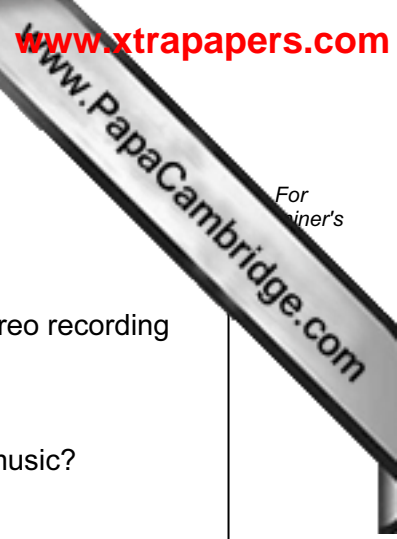
.....

.....

.....

..... [2]





16 The following statistics refer to a music track being recorded on a CD:

- music is sampled at 44 100 times per second
- each sample is 16 bits
- each track requires separate sampling for left and right speakers of a stereo recording

(8 bits = 1 byte, 1 megabyte = 1 048 576 bytes)

(a) (i) How many bytes are required to represent **one** second of sampled music?

..... [2]

(ii) If a typical music track is 3 minutes long, how much memory is used on the CD to store one track? (Give your answer in megabytes.)

.....  
.....  
.....  
..... [2]

(b) When using MP3 format, the size of the above music track will be reduced by a factor of 10 (i.e. the size is reduced by 90%).

How is the music quality retained?

.....  
.....  
.....  
.....  
..... [2]





---

Permission to reproduce items where third-party owned material protected by copyright is included has been sought and cleared where possible. Every reasonable effort has been made by the publisher (UCLES) to trace copyright holders, but if any items requiring clearance have unwittingly been included, the publisher will be pleased to make amends at the earliest possible opportunity.

University of Cambridge International Examinations is part of the Cambridge Assessment Group. Cambridge Assessment is the brand name of University of Cambridge Local Examinations Syndicate (UCLES), which is itself a department of the University of Cambridge.