



ADVANCED SUBSIDIARY (AS)
General Certificate of Education
January 2012

Centre Number

71

Candidate Number

Geography

Assessment Unit AS 2

assessing

Human Geography

[AG121]



MONDAY 30 JANUARY, AFTERNOON

TIME

1 hour 30 minutes.

INSTRUCTIONS TO CANDIDATES

Write your Centre Number and Candidate Number in the spaces provided at the top of this page.

Section A: candidates must answer this section.

Section B: answer **all three** questions in this section.

Section C: answer **any two** questions from this section.

You should write your answers in the spaces provided in this question paper.

INFORMATION FOR CANDIDATES

The total mark for this paper is 90.

Quality of written communication will be assessed in **all** questions.

Figures in brackets printed down the right-hand side of pages indicate the marks awarded to each question or part question.

For Examiner's
use only

Question Number	Marks
1	
2	
3	
4	
5	
6	
7	

Total
Marks

Section A

Answer this section.

- 1 (a) Study **Resource 1A** which relates to the initial stages of a Spearman's Rank statistical test used to investigate the relationship between Gross Domestic Product (GDP) per capita and life expectancy in 2009 for a sample of 14 countries.

Resource 1A

Country	X GDP per Capita (\$)	Rank X	Y Life expectancy (years)	Rank Y	d	d ²
Albania	3750	7	77	5	2	4
Australia	42279	3	81	2	1	1
Bangladesh	551	12	66	9	3	9
Belgium	43430	2	80	3	-1	1
Brazil	8114	5	72	7	-2	
Chad	596	11	49	13	-2	4
Denmark	55992	1	79	4	-3	9
Egypt	2269	8	70	8	0	0
Haiti	667	10	61	10	0	0
Italy	35084	4	82	1	3	
Kenya	759	9	54	11	-2	4
Mozambique	428	13	48	14	-1	1
Niger	352	14	51	12	2	4
Romania	7500	6	73	6	0	0

Source: World Bank data

$\Sigma d^2 = 50$

- (i) Complete **Resource 1A** by filling in the missing values.

[2]

Examiner Only	
Marks	Remark

Resource 1B

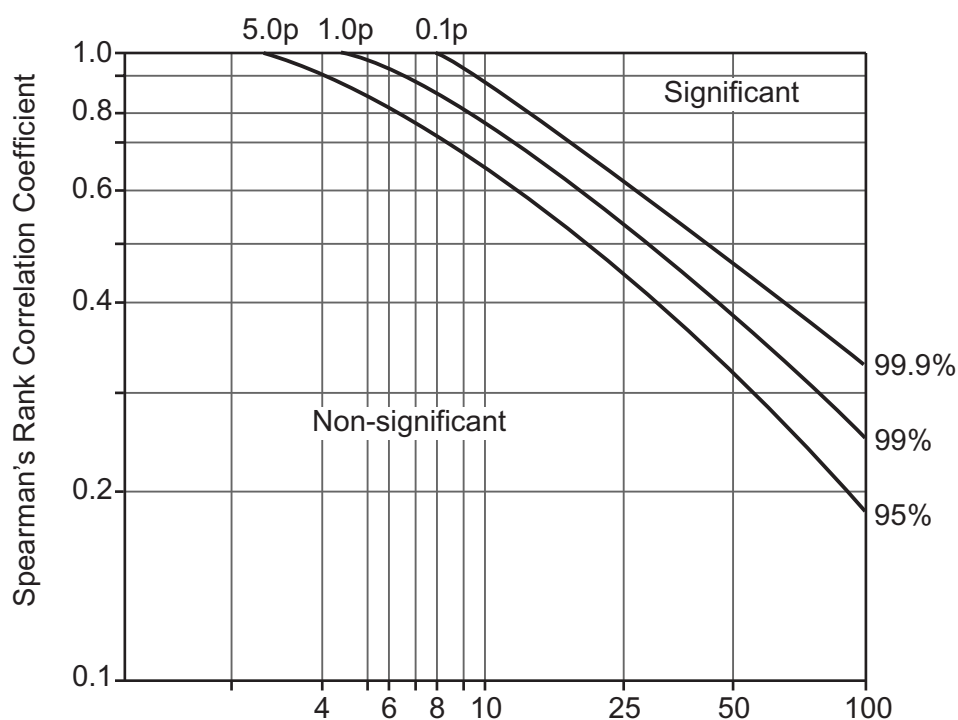
Spearman's Rank Correlation Equation and Significance Charts

Formula:

$$r_s = 1 - \left(\frac{6 \sum d^2}{n^3 - n} \right)$$

where d = the difference in rank of the values of each matched pair n = the number of ranked pairs Σ = the sum of

Spearman's Rank Correlation Significance Graph and Table

Critical values for r_s Degrees of freedom [Number of ranked pairs (n) – 2]Critical values of Spearman's Rank Correlation Coefficient, r_s

Significance level

degrees of freedom	0.05 (5%)	0.01 (1%)
4	0.88	1.00
5	0.83	0.96
6	0.80	0.91
7	0.77	0.87
8	0.72	0.84
9	0.68	0.80
10	0.64	0.77
11	0.60	0.74
12	0.57	0.71
15	0.50	0.65

BLANK PAGE
(Questions continue overleaf)

- (ii) Complete the map and key on **Resource 1D** using your chosen technique. [5]

Resource 1D



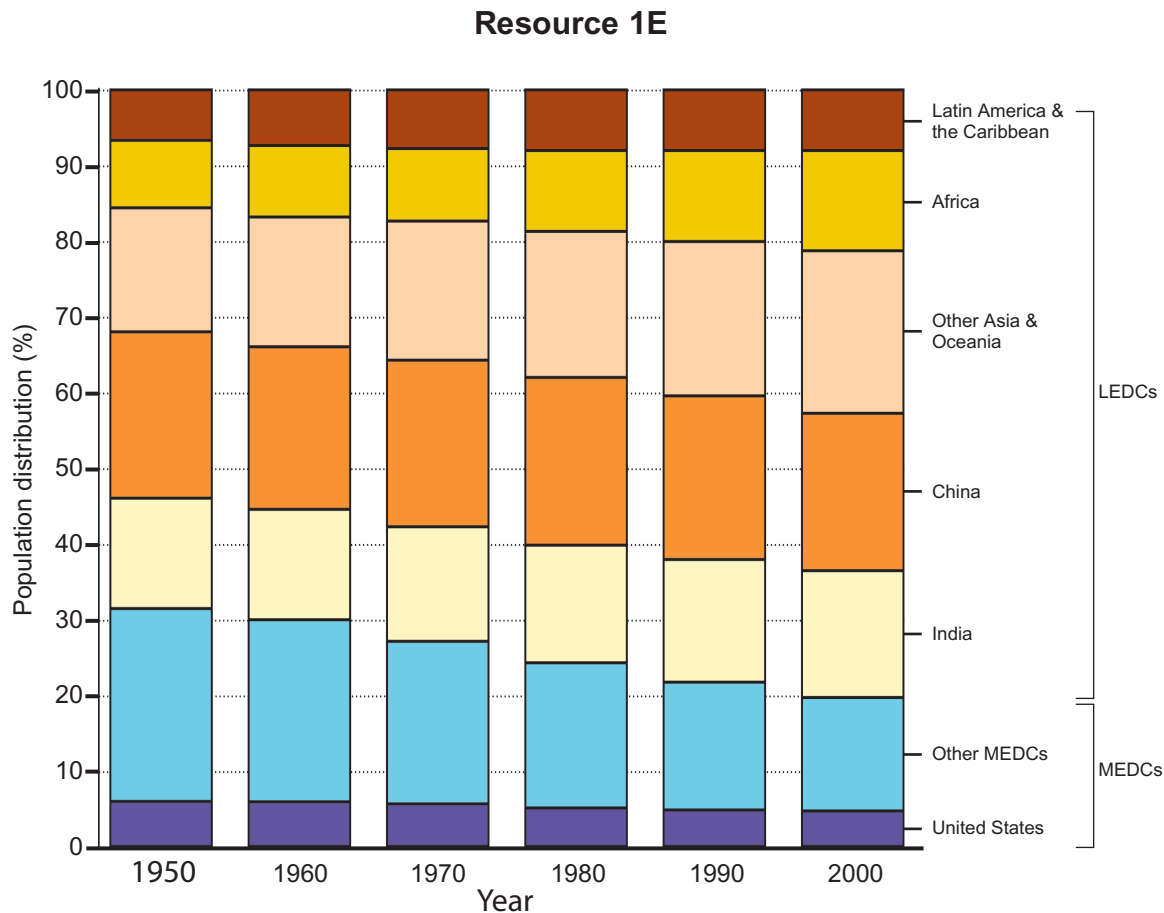
Source: G Alexander / CCEA

- (iii) Describe **one** limitation of your chosen technique for mapping this data.

[2]

Examiner Only	
Marks	Remark

- (c) Study **Resource 1E** showing the distribution of the world's population from 1950 to 2000.



- (i) Identify the percentage of the world's population living in Africa in 1950.

_____ [1]

- (ii) Identify the percentage of the world's population living in Africa in 2000.

_____ [1]

BLANK PAGE
(Questions continue overleaf)

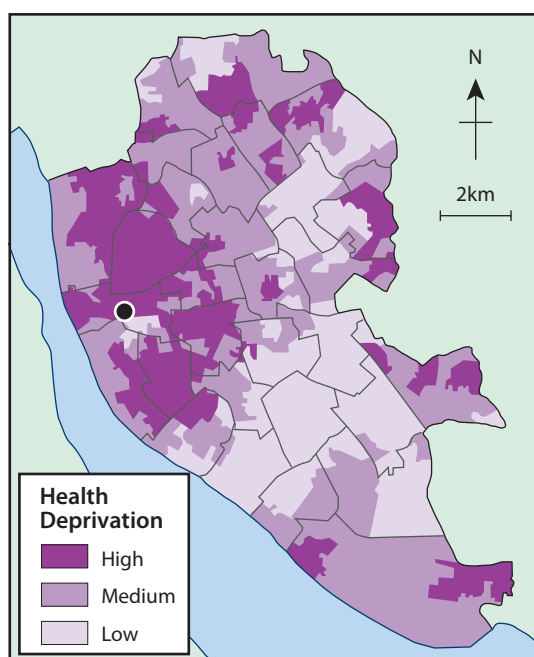
Examiner Only	
Marks	Remark

[3]

Employment Deprivation

- High
- Medium
- Low

Resource 3B



Source: G Alexander / CCEA

Examiner Only	
Marks	Remark



- Liverpool city centre

(i) Using **Resources 3A–C**, describe the pattern of social and economic deprivation in Liverpool.

[5]

[5]

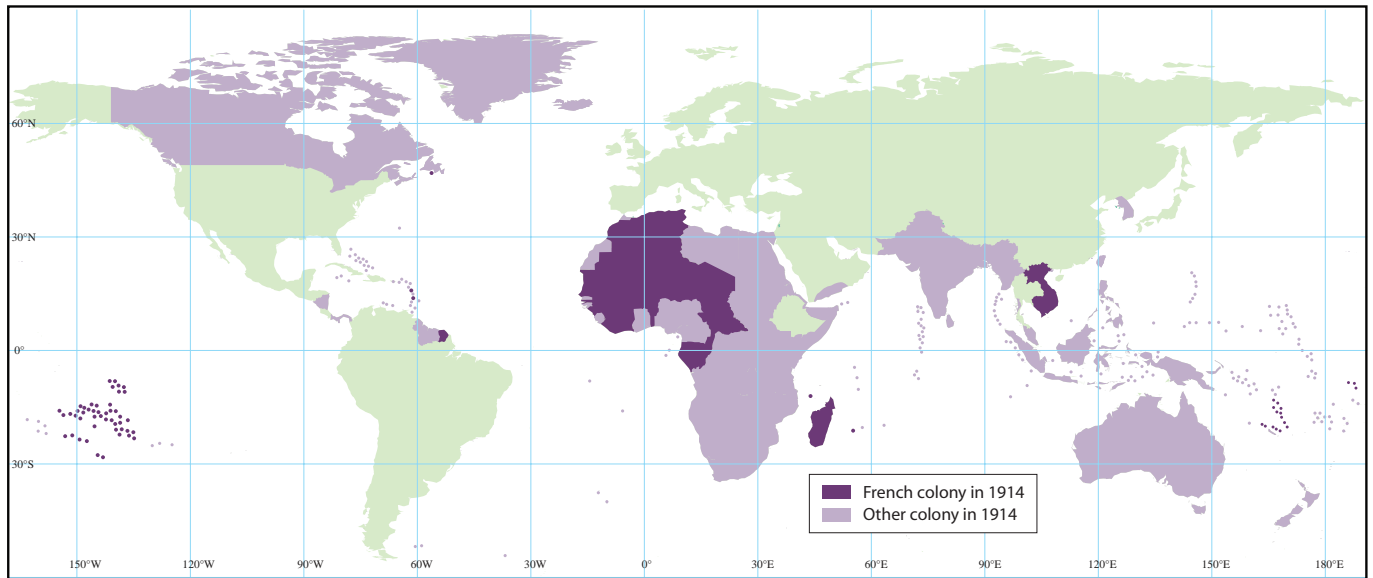
Examiner Only

Marks	Remark
-------	--------

BLANK PAGE
(Questions continue overleaf)

- 4 (a) Study **Resource 4** showing the distribution of colonial Empires in 1914 and answer the questions that follow.

Resource 4



Source: G Alexander / CCEA

- (i) Describe the distribution of French colonies in 1914.

[2]

- (ii) Discuss **one negative** effect of colonialism for the colonies, and **one positive** effect of colonialism for the ruling countries.

[4]

Examiner Only	
Marks	Remark

This image shows a single sheet of white paper with horizontal ruling lines. The lines are evenly spaced and run across the width of the page. There are no margins, text, or other markings on the paper.

Question
Number

Number your answers clearly

[illegible]

[illegible]

[illegible]

[illegible]

[illegible]

This image shows a blank sheet of white paper with horizontal ruling lines. The lines are evenly spaced and extend across the width of the page. There are no margins, text, or other markings on the paper.

Number your answers clearly

Question
Number

[illegible]

[illegible]

[illegible]

THIS IS THE END OF THE QUESTION PAPER

Permission to reproduce all copyright material has been applied for.
In some cases, efforts to contact copyright holders may have been unsuccessful and CCEA
will be happy to rectify any omissions of acknowledgement in future if notified.