



ADVANCED SUBSIDIARY (AS)
General Certificate of Education
January 2011

Mathematics

Assessment Unit C2

assessing

Module C2: AS Core Mathematics 2

[AMC21]



MONDAY 24 JANUARY, MORNING

TIME

1 hour 30 minutes.

INSTRUCTIONS TO CANDIDATES

Write your Centre Number and Candidate Number on the Answer Booklet provided.

Answer **all eight** questions.

Show clearly the full development of your answers.

Answers should be given to three significant figure unless otherwise stated.

You are permitted to use a graphic or scientific calculator in this paper.

INFORMATION FOR CANDIDATES

The total mark for this paper is 75

Figures in brackets printed down the right-hand side of pages indicate the marks awarded to each question or part question.

A copy of the **Mathematical Formulae and Tables booklet** is provided.

Throughout the paper the logarithmic notation used is $\ln z$ where it is noted that $\ln z \equiv \log_e z$



Answer all eight questions.

Show clearly the full development of your answers.

Answers should be given to three significant figures unless otherwise stated.

- 1** The arc of the sector of a circle subtends an angle of 1.5 radians at its centre as shown in **Fig. 1** below.

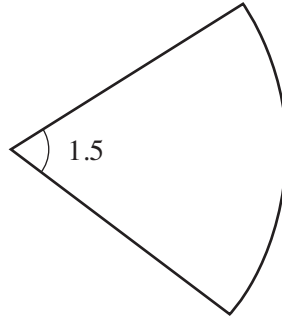


Fig. 1

The area of this sector is 36 cm^2

- (i)** Find the radius of the circle. [2]
- (ii)** Find the perimeter of the sector. [3]

2 Fig. 2 below shows a plan of a field ABCD.

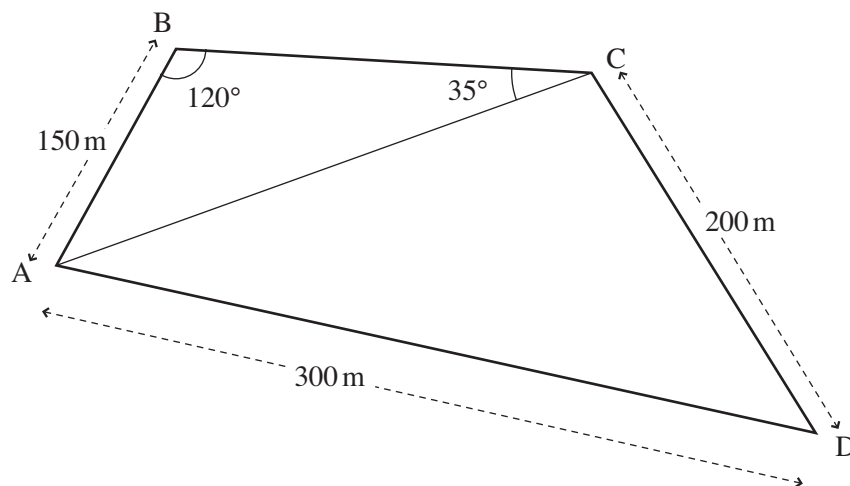


Fig. 2

- (i) Find the length of AC. [2]
- (ii) Find the area of the triangle ABC. [3]
- (iii) Find the angle ADC. [3]
- (iv) Find the area of the field. [2]

- 3 A circle is given by the equation

$$x^2 - 2x + y^2 + 4y = 4$$

- (i) Find the centre and radius of the circle. [4]

A tangent is drawn to the circle from the point A (5, 6).

The tangent touches the circle at the point B as shown in **Fig. 3** below.

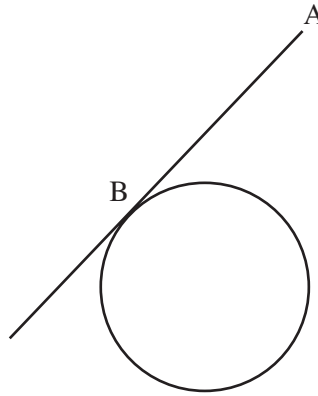


Fig. 3

- (ii) Find the length AB. [4]

- 4 (a) (i) Sketch the graph of

$$y = \tan 2x$$

for $-180^\circ < x < 180^\circ$

[2]

- (ii) State the period of this graph.

[1]

- (iii) Solve the equation

$$\tan 2x = 3$$

for $-180^\circ < x < 180^\circ$

[4]

- (b) Prove the identity

$$\frac{1 - \cos^2 \theta}{\sin \theta \cos \theta} = \tan \theta$$

[3]

5 (a) Find

$$\int 6\sqrt{x} - \frac{2}{x^3} dx \quad [3]$$

(b) The graphs of

$$y = x^2 - 8x + 16$$

and

$$y = 4 + 6x - x^2$$

are shown in **Fig. 4** below.

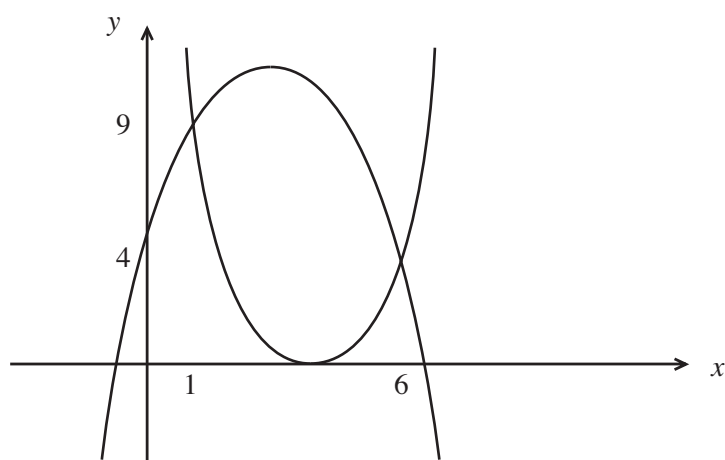


Fig. 4

The coordinates of the points of intersection of the curves are (1, 9) and (6, 4).

Find the area between the 2 curves.

[7]

- 6 (a) A sequence is defined recursively by

$$u_{n+1} = \frac{3}{10}u_n + 4$$

where $u_1 = -5$

- (i) Find the values of u_2 and u_3 [2]

- (ii) The sequence converges to a limit l .
By forming and solving an equation, find the exact value of l . [2]

- (b) A solution by trial and improvement is not acceptable.

Bill has borrowed a sum of money.

His repayments will form an Arithmetic Progression.

He agrees to repay £200 at the end of the first month, £195 at the end of the second month, £190 at the end of the third month and so on until the loan is repaid.

- (i) Find how much he will repay at the end of the 12th month. [2]

- (ii) Find after how many months he will make his final repayment. [2]

- (iii) Calculate the total amount of money that he will repay. [3]

- 7 (a) (i) Rewrite as a single logarithm

$$\log_3 8 - 3 \log_3 x$$
 [3]

- (ii) Hence solve the equation

$$\log_3 8 - 3 \log_3 x = 3$$
 [4]

- (b) A solution by trial and improvement is not acceptable.

A patch of mould increases its area by 12% each day.

Initially the patch of mould has an area of A_0

Find after how many days the area of the patch of mould is 17 times A_0 [4]

8 If

$$(1 + ax)^n = 1 - 4x + 7x^2 + \dots$$

find the values of a and n .

[10]

THIS IS THE END OF THE QUESTION PAPER

