

Biology
Standard level
Paper 2

Wednesday 6 May 2015 (morning)

Candidate session number

--	--	--	--	--	--	--	--	--	--

1 hour 15 minutes

Instructions to candidates

- Write your session number in the boxes above.
- Do not open this examination paper until instructed to do so.
- Section A: answer all questions.
- Section B: answer one question.
- Write your answers in the boxes provided.
- A calculator is required for this paper.
- The maximum mark for this examination paper is **[50 marks]**.

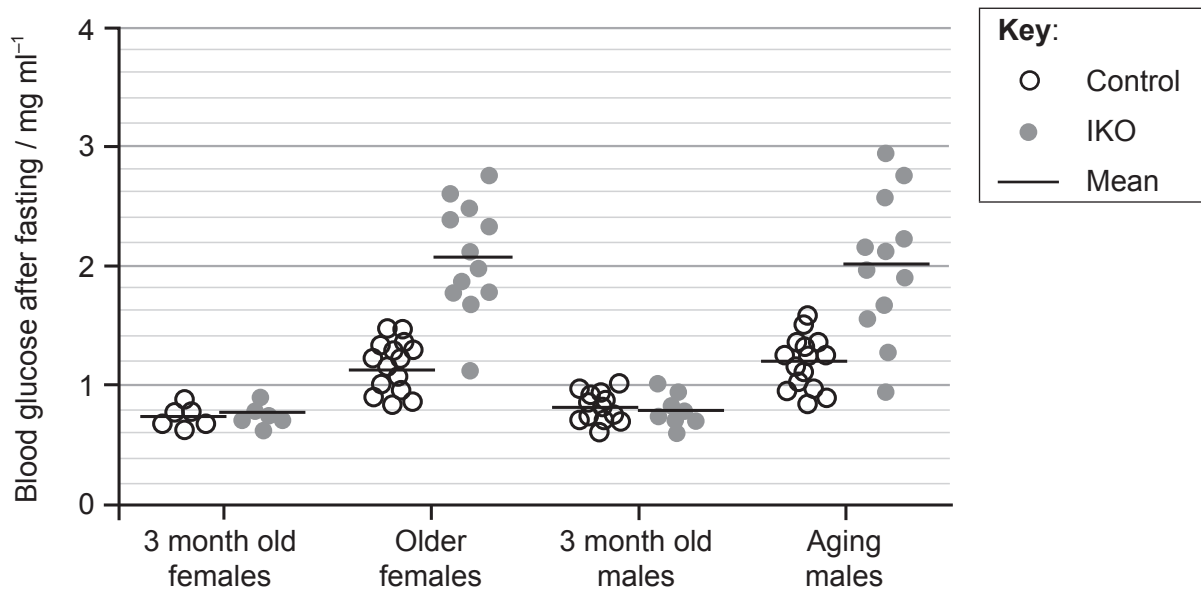


Section A

Answer **all** questions. Write your answers in the boxes provided.

1. Diabetes is often associated with the failure of the β (beta) cells in the pancreas, but it is unclear what actually causes this failure. FoxO1 is a protein which acts as a transcription factor to regulate the expression of genes involved in cell growth. FoxO1 also regulates increase in number and differentiation in cells such as pancreatic β cells.

A study was conducted using mice lacking the gene for FoxO1 in β cells (IKO) as well as normal (control) mice. Blood glucose levels after fasting were compared for four groups of mice: young (3 months old) male mice, young (3 months old) female mice, older females (who have had several pregnancies) and aging males (16–20 months).



[Source: Chutima Talchai, Shouhong Xuan, Hua V. Lin, Lori Sussel, Domenico Accili, "Pancreatic β Cell Dedifferentiation as a Mechanism of Diabetic β Cell Failure", *Cell*, Volume 150, Issue 6, 14 September 2012, Pages 1223–1234.]

- (a) Compare blood glucose levels after fasting in young control mice and young IKO mice without FoxO1. [2]

.....

.....

.....

.....

(This question continues on the following page)



(Question 1 continued)

- (b) (i) Estimate the difference between mean blood glucose levels in control and IKO older female mice. [1]

.....mg ml⁻¹

- (ii) Aging and having pregnancies are considered to be physiological stresses. Deduce the effect of stress on blood glucose levels. [2]

.....
.....
.....
.....

- (c) Outline the relationship between blood glucose levels after fasting and lack of FoxO1 in the mice studied. [2]

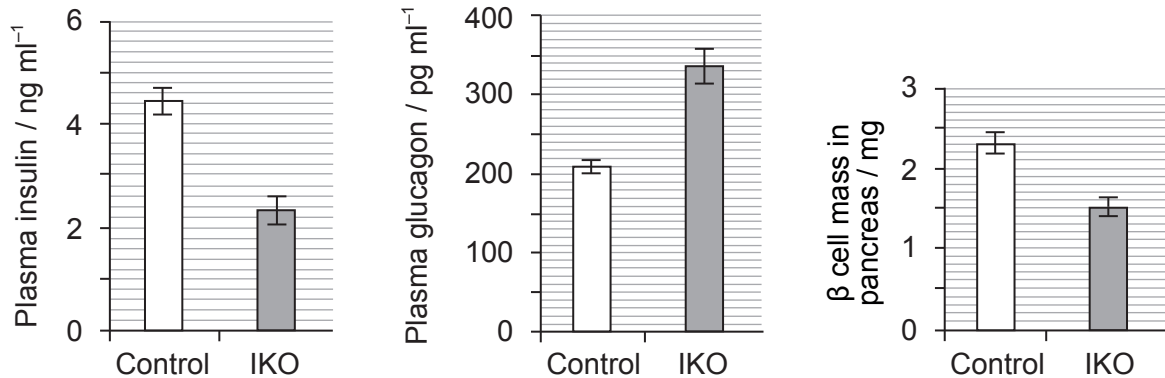
.....
.....
.....
.....

(This question continues on the following page)



(Question 1 continued)

The levels of pancreatic hormones and β cell mass in older female control mice and older female IKO mice lacking FoxO1 were then investigated.



[Source: Chutima Talchai, Shouhong Xuan, Hua V. Lin, Lori Sussel, Domenico Accili, "Pancreatic β Cell Dedifferentiation as a Mechanism of Diabetic β Cell Failure", *Cell*, Volume 150, Issue 6, 14 September 2012, Pages 1223–1234]

- (d) Calculate the percentage difference in β cell mass of the IKO mice compared to the control mice. [2]

.....%

- (e) State the correlation between lack of FoxO1 and pancreatic hormones in mice. [1]

.....

.....

(This question continues on the following page)



(Question 1 continued)

- (f) Referring to the functions of insulin and glucagon, suggest how the differences in hormone levels help to explain the blood glucose levels.

[3]

.....

.....

.....

.....

.....

.....



2. Milk contains lactose which some people can digest but some cannot.

(a) State what type of sugar lactose is. [1]

.....

(b) State a function of lactose. [1]

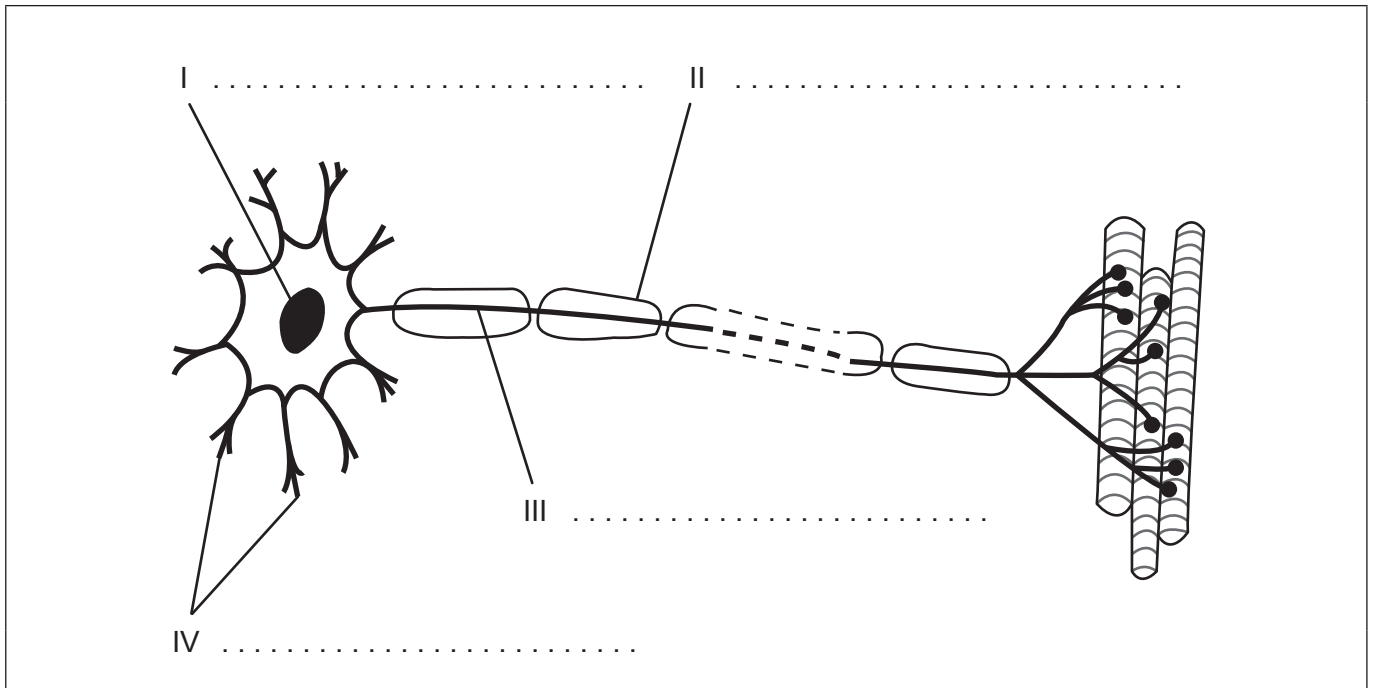
.....

(c) Explain the production of lactose-free milk. [3]

.....
.....
.....
.....
.....
.....



3. The diagram below shows a motor neuron.



[Source: © International Baccalaureate Organization 2015]

(a) Label the structures indicated by the numbers I–IV. [2]

(b) State a function of motor neurons. [1]

.....
.....

(c) Define *resting potential*. [1]

.....
.....

(This question continues on the following page)



(Question 3 continued)

(d) Outline how nerve impulses are transmitted along a nerve fibre.

[3]

.....

.....

.....

.....

.....

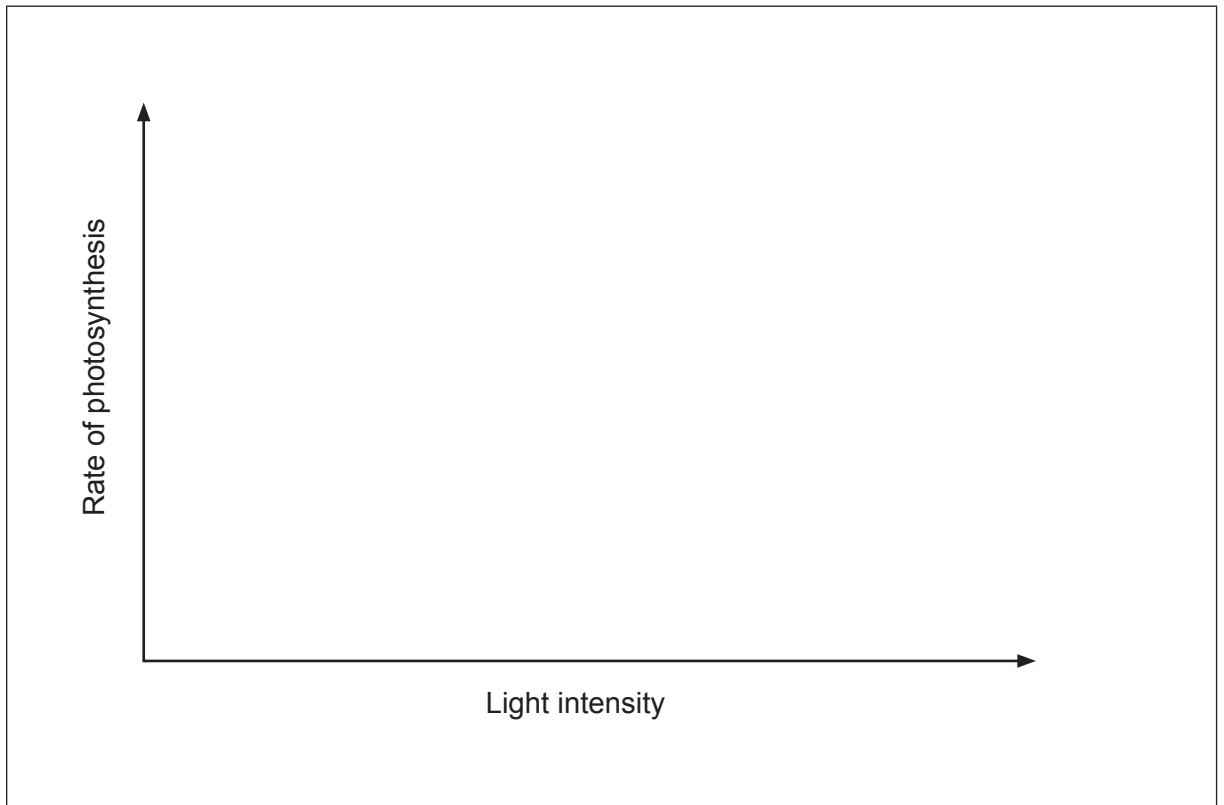
.....



4. (a) Distinguish between absorption of red, green and blue light by chlorophyll. [2]

.....
.....
.....
.....

- (b) (i) Draw a graph to show the effect of increasing light intensity on the rate of photosynthesis. [1]



- (ii) Explain **one** way of directly measuring the rate of photosynthesis. [2]

.....
.....
.....
.....



Section B

Answer **one** question. Up to two additional marks are available for the construction of your answer. Write your answers in the boxes provided.

5. (a) Draw a labelled diagram of a prokaryotic cell. [5]
- (b) Bacteria are prokaryotes that sometimes act as pathogens. Describe how the body can defend itself against pathogens. [7]
- (c) Explain the evolution of antibiotic resistance in bacteria. [6]
6. (a) Draw a labelled diagram of the human adult male reproductive system. [5]
- (b) Describe the application of DNA profiling to determine paternity. [5]
- (c) Explain the inheritance of colour blindness. [8]
7. (a) Draw a labelled diagram showing the structure of three water molecules and how they interact. [4]
- (b) Aquatic and other environments are being affected by a global rise in temperature. Outline the consequences of this on arctic ecosystems. [6]
- (c) Cell membranes separate aqueous environments in cells. Explain how the properties of phospholipids help to maintain the structure of cell membranes. [8]



A large rectangular area containing 25 horizontal dotted lines for writing.



A large rectangular area with horizontal dotted lines, intended for writing answers.



A large rectangular area containing horizontal dotted lines for writing.



16EP13

Turn over

A large rectangular box containing a grid of horizontal dotted lines, intended for writing answers.



A large rectangular area containing horizontal dotted lines for writing.



16EP15

Turn over

.....
.....
.....
.....
.....
.....
.....
.....
.....
.....
.....
.....
.....
.....
.....
.....
.....
.....
.....
.....
.....
.....
.....
.....
.....
.....
.....
.....
.....
.....
.....
.....
.....
.....
.....
.....
.....
.....
.....
.....
.....
.....
.....
.....
.....
.....
.....
.....
.....
.....
.....
.....
.....

