

22067301

MATHEMATICS
STANDARD LEVEL
PAPER 1

Wednesday 3 May 2006 (afternoon)

1 hour 30 minutes

Candidate session number

0	0							
---	---	--	--	--	--	--	--	--

INSTRUCTIONS TO CANDIDATES

- Write your session number in the boxes above.
- Do not open this examination paper until instructed to do so.
- Answer all the questions in the spaces provided.
- Unless otherwise stated in the question, all numerical answers must be given exactly or correct to three significant figures.



Full marks are not necessarily awarded for a correct answer with no working. Answers must be supported by working and/or explanations. In particular, solutions found from a graphic display calculator should be supported by suitable working, e.g. if graphs are used to find a solution, you should sketch these as part of your answer. Where an answer is incorrect, some marks may be given for a correct method, provided this is shown by written working. You are therefore advised to show all working. Working may be continued below the lines, if necessary.

1. (a) Let $\begin{pmatrix} b & 3 \\ 7 & 8 \end{pmatrix} + \begin{pmatrix} 9 & 5 \\ -2 & 7 \end{pmatrix} = \begin{pmatrix} 4 & 8 \\ a & 15 \end{pmatrix}$.

(i) Write down the value of a .

(ii) Find the value of b .

(b) Let $3 \begin{pmatrix} -4 & 8 \\ 2 & 1 \end{pmatrix} - 5 \begin{pmatrix} 2 & 0 \\ q & -4 \end{pmatrix} = \begin{pmatrix} -22 & 24 \\ -9 & 23 \end{pmatrix}$.

Find the value of q .

.....
.....
.....
.....
.....
.....
.....
.....
.....
.....
.....
.....
.....
.....
.....
.....
.....
.....
.....



2. Let A and B be independent events such that $P(A) = 0.3$ and $P(B) = 0.8$.
- (a) Find $P(A \cap B)$.
 - (b) Find $P(A \cup B)$.
 - (c) Are A and B mutually exclusive? Justify your answer.

.....

.....

.....

.....

.....

.....

.....

.....

.....

.....

.....

.....

.....

.....

.....

.....

.....

.....

.....

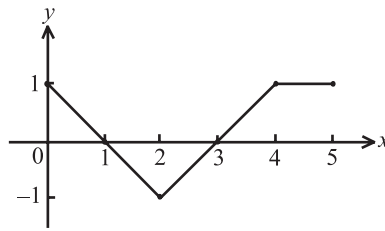
.....

.....

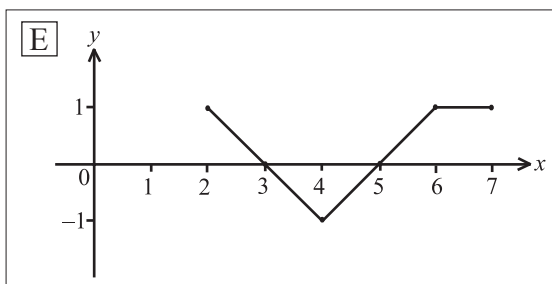
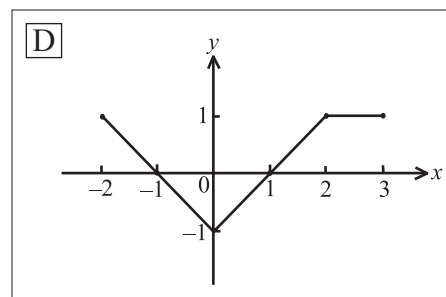
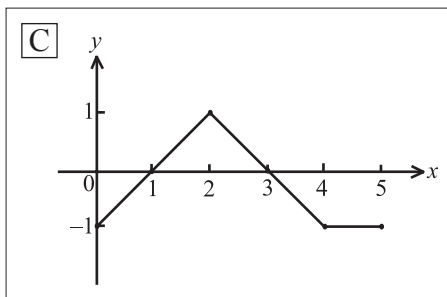
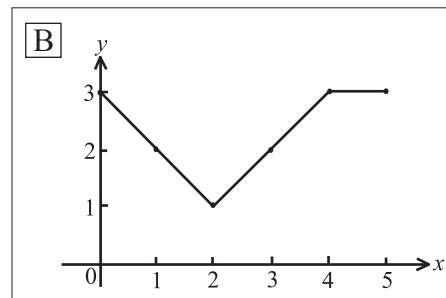
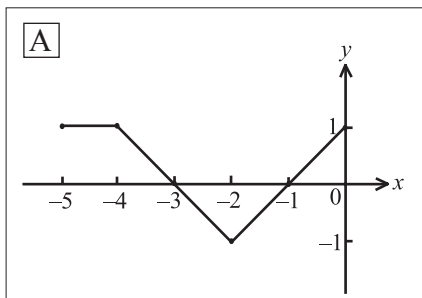
.....



3. The following diagram shows part of the graph of $f(x)$.



Consider the five graphs in the diagrams labelled A, B, C, D, E below.



- (a) Which diagram is the graph of $f(x+2)$?
- (b) Which diagram is the graph of $-f(x)$?
- (c) Which diagram is the graph of $f(-x)$?

.....

.....

.....



4. The heights of a group of students are normally distributed with a mean of 160 cm and a standard deviation of 20 cm.
- (a) A student is chosen at random. Find the probability that the student's height is greater than 180 cm.
- (b) In this group of students, 11.9 % have heights less than d cm. Find the value of d .

.....

.....

.....

.....

.....

.....

.....

.....

.....

.....

.....

.....

.....

.....

.....

.....

.....

.....

.....

.....

.....

.....

.....



- 5. (a) Let $f(x) = e^{5x}$. Write down $f'(x)$.
- (b) Let $g(x) = \sin 2x$. Write down $g'(x)$.
- (c) Let $h(x) = e^{5x} \sin 2x$. Find $h'(x)$.

.....

.....

.....

.....

.....

.....

.....

.....

.....

.....

.....

.....

.....

.....

.....

.....

.....

.....

.....

.....

.....

.....



6. Let $f(x) = a(x - 4)^2 + 8$.

(a) Write down the coordinates of the vertex of the curve of f .

(b) Given that $f(7) = -10$, find the value of a .

(c) Hence find the y -intercept of the curve of f .

.....

.....

.....

.....

.....

.....

.....

.....

.....

.....

.....

.....

.....

.....

.....



7. Let $f(x) = x^3 - 4$ and $g(x) = 2x$.

(a) Find $(g \circ f)(-2)$.

(b) Find $f^{-1}(x)$.

.....

.....

.....

.....

.....

.....

.....

.....

.....

.....

.....

.....

.....

.....

.....

.....

.....

.....

.....

.....

.....

.....

.....



- 8. Consider the four numbers a, b, c, d with $a \leq b \leq c \leq d$, where $a, b, c, d \in \mathbb{Z}$.
The mean of the four numbers is 4.
The mode is 3.
The median is 3.
The range is 6.

Find the value of a , of b , of c and of d .

.....

.....

.....

.....

.....

.....

.....

.....

.....

.....

.....

.....

.....

.....

.....



9. Let $A = \begin{pmatrix} 1 & 2 & 3 \\ 3 & 1 & 2 \\ 2 & 0 & 1 \end{pmatrix}$, $B = \begin{pmatrix} 18 \\ 23 \\ 13 \end{pmatrix}$ and $X = \begin{pmatrix} x \\ y \\ z \end{pmatrix}$.

- (a) Write down the inverse matrix A^{-1} .
- (b) Consider the equation $AX = B$.
 - (i) Express X in terms of A^{-1} and B .
 - (ii) **Hence**, solve for X .

.....

.....

.....

.....

.....

.....

.....

.....

.....

.....

.....

.....

.....

.....

.....

.....

.....

.....

.....

.....

.....

.....



10. (a) Let $\log_c 3 = p$ and $\log_c 5 = q$. Find an expression in terms of p and q for

(i) $\log_c 15$;

(ii) $\log_c 25$.

(b) Find the value of d if $\log_d 6 = \frac{1}{2}$.

.....

.....

.....

.....

.....

.....

.....

.....

.....

.....

.....

.....

.....

.....

.....

.....

.....

.....

.....

.....

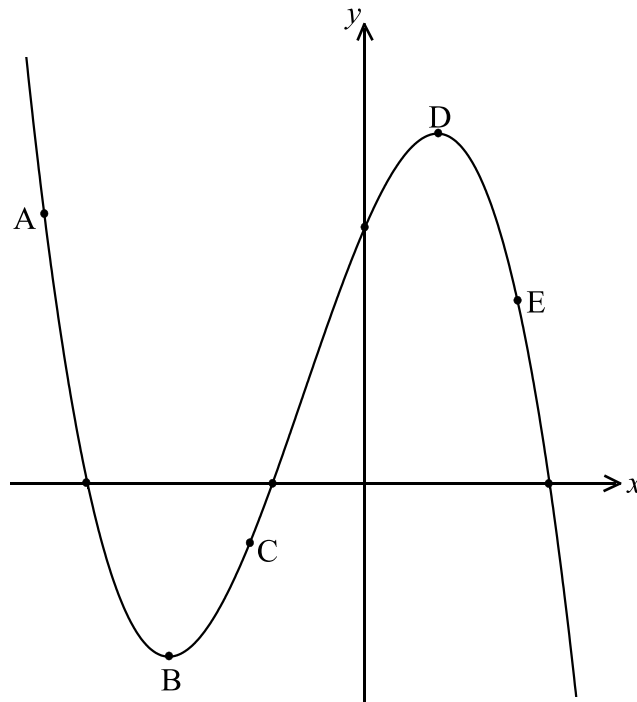
.....

.....

.....



11. The following diagram shows part of the curve of a function f . The points A, B, C, D and E lie on the curve, where B is a minimum point and D is a maximum point.



- (a) Complete the following table, noting whether $f'(x)$ is positive, negative or zero at the given points.

	A	B	E
$f'(x)$			

- (b) Complete the following table, noting whether $f''(x)$ is positive, negative or zero at the given points.

	A	C	E
$f''(x)$			



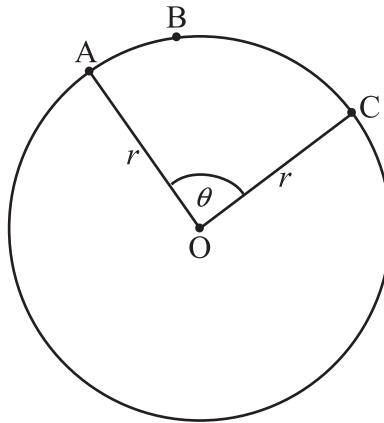
12. The velocity, $v \text{ m s}^{-1}$, of a moving object at time t seconds is given by $v = 4t^3 - 2t$.
When $t = 2$, the displacement, s , of the object is 8 metres.

Find an expression for s in terms of t .

.....
.....
.....
.....
.....
.....
.....
.....
.....
.....
.....
.....
.....
.....
.....
.....



13. The following diagram shows a circle with radius r and centre O . The points A , B and C are on the circle and $\hat{AOC} = \theta$.



The area of sector $OABC$ is $\frac{4}{3}\pi$ and the length of arc ABC is $\frac{2}{3}\pi$.

Find the value of r and of θ .

.....

.....

.....

.....

.....

.....

.....

.....

.....

.....

.....

.....

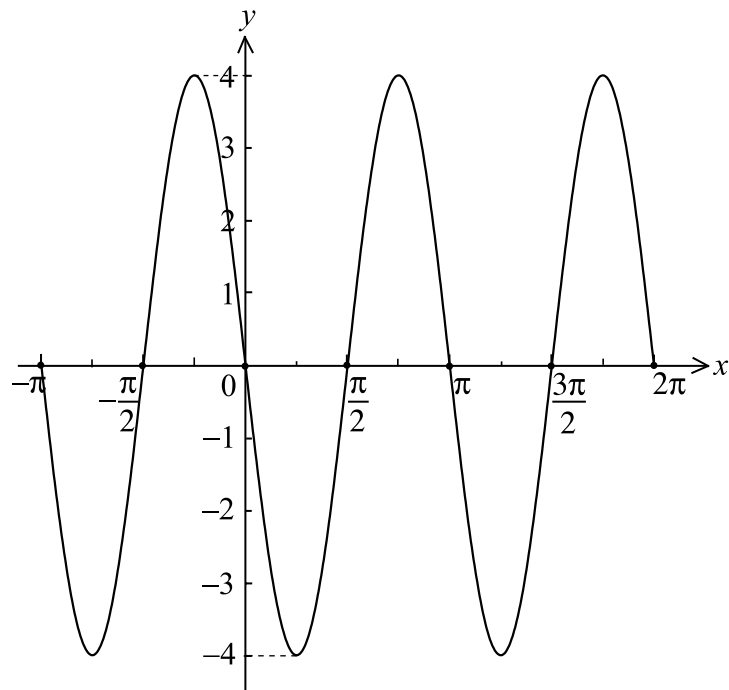
.....

.....

.....

.....

14. Let $f(x) = a \sin b(x - c)$. Part of the graph of f is given below.



Given that a , b and c are positive, find the value of a , of b and of c .

.....

.....

.....

.....

.....

.....

.....

.....

.....

.....

.....

.....

.....

.....

.....

.....

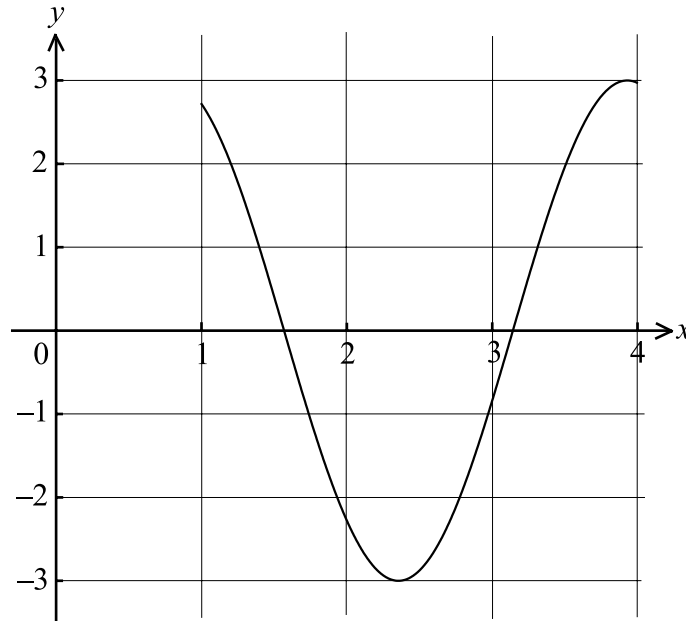
.....

.....

.....

.....

15. Let $f(x) = 3 \sin 2x$, for $1 \leq x \leq 4$ and $g(x) = -5x^2 + 27x - 35$ for $1 \leq x \leq 4$. The graph of f is shown below.



- (a) On the same diagram, sketch the graph of g .
- (b) One solution of $f(x) = g(x)$ is 1.89. Write down the other solution.
- (c) Let $h(x) = g(x) - f(x)$. Given that $h(x) > 0$ for $p < x < q$, write down the value of p and of q .

.....

.....

.....

.....

.....

.....

.....

.....

.....

.....

.....

.....

.....

.....

.....

.....

.....

.....

.....

.....

.....

.....

