

Markscheme

May 2015

Mathematics

Higher level

Paper 2

22 pages

This markscheme is **confidential** and for the exclusive use of examiners in this examination session.

It is the property of the International Baccalaureate and must **not** be reproduced or distributed to any other person without the authorization of the IB Assessment Centre.

Instructions to Examiners

Abbreviations

- M** Marks awarded for attempting to use a valid **Method**; working must be seen.
- (M)** Marks awarded for **Method**; may be implied by **correct** subsequent working.
- A** Marks awarded for an **Answer** or for **Accuracy**; often dependent on preceding **M** marks.
- (A)** Marks awarded for an **Answer** or for **Accuracy**; may be implied by **correct** subsequent working.
- R** Marks awarded for clear **Reasoning**.
- N** Marks awarded for **correct** answers if **no** working shown.
- AG** Answer given in the question and so no marks are awarded.

Using the markscheme

1 General

Mark according to RM™ Assessor instructions and the document “**Mathematics HL: Guidance for e-marking May 2015**”. It is essential that you read this document before you start marking. In particular, please note the following.

Marks must be recorded using the annotation stamps. Please check that you are entering marks for the right question.

- If a part is **completely correct**, (and gains all the ‘must be seen’ marks), use the ticks with numbers to stamp full marks.
- If a part is completely wrong, stamp **A0** by the final answer.
- If a part gains anything else, it **must** be recorded using **all** the annotations.

All the marks will be added and recorded by RM™ Assessor.

2 Method and Answer/Accuracy marks

- Do **not** automatically award full marks for a correct answer; all working **must** be checked, and marks awarded according to the markscheme.
- It is not possible to award **M0** followed by **A1**, as **A** mark(s) depend on the preceding **M** mark(s), if any.
- Where **M** and **A** marks are noted on the same line, for example, **M1A1**, this usually means **M1** for an **attempt** to use an appropriate method (for example, substitution into a formula) and **A1** for using the **correct** values.
- Where the markscheme specifies **(M2)**, **N3**, etc, do **not** split the marks.

- Once a correct answer to a question or part-question is seen, ignore further correct working. However, if further working indicates a lack of mathematical understanding do not award the final **A1**. An exception to this may be in numerical answers, where a correct exact value is followed by an incorrect decimal. However, if the incorrect decimal is carried through to a subsequent part, and correct **FT** working shown, award **FT** marks as appropriate but do not award the final **A1** in that part.

Examples

| | Correct answer seen | Further working seen | Action |
|----|----------------------|---|---|
| 1. | $8\sqrt{2}$ | 5.65685... (incorrect decimal value) | Award the final A1 (ignore the further working) |
| 2. | $\frac{1}{4}\sin 4x$ | $\sin x$ | Do not award the final A1 |
| 3. | $\log a - \log b$ | $\log(a - b)$ | Do not award the final A1 |

3 N marks

Award **N** marks for **correct** answers where there is **no** working.

- Do **not** award a mixture of **N** and other marks.
- There may be fewer **N** marks available than the total of **M**, **A** and **R** marks; this is deliberate as it penalizes candidates for not following the instruction to show their working.

4 Implied marks

Implied marks appear in **brackets**, for example, (**M1**), and can only be awarded if **correct** work is seen or if implied in subsequent working.

- Normally the correct work is seen or implied in the next line.
- Marks **without** brackets can only be awarded for work that is **seen**.

5 Follow through marks

Follow through (**FT**) marks are awarded where an incorrect answer from one **part** of a question is used correctly in **subsequent part(s)**. To award **FT** marks, **there must be working present** and not just a final answer based on an incorrect answer to a previous part.

- If the question becomes much simpler because of an error then use discretion to award fewer **FT** marks.
- If the error leads to an inappropriate value (for example, $\sin \theta = 1.5$), do not award the mark(s) for the final answer(s).
- Within a question part, once an error is made, no further **dependent A** marks can be awarded, but **M** marks may be awarded if appropriate.
- Exceptions to this rule will be explicitly noted on the markscheme.

6 Mis-read

If a candidate incorrectly copies information from the question, this is a mis-read (**MR**). A candidate should be penalized only once for a particular mis-read. Use the **MR** stamp to indicate that this has been a misread. Then deduct the first of the marks to be awarded, even if this is an **M** mark, but award all others so that the candidate only loses one mark.

- If the question becomes much simpler because of the **MR**, then use discretion to award fewer marks.
- If the **MR** leads to an inappropriate value (for example, $\sin \theta = 1.5$), do not award the mark(s) for the final answer(s).

7 Discretionary marks (d)

An examiner uses discretion to award a mark on the rare occasions when the markscheme does not cover the work seen. In such cases the annotation **DM** should be used and a brief **note** written next to the mark explaining this decision.

8 Alternative methods

Candidates will sometimes use methods other than those in the markscheme. Unless the question specifies a method, other correct methods should be marked in line with the markscheme. If in doubt, contact your team leader for advice.

- Alternative methods for complete questions are indicated by **METHOD 1**, **METHOD 2**, etc.
- Alternative solutions for part-questions are indicated by **EITHER . . . OR**.
- Where possible, alignment will also be used to assist examiners in identifying where these alternatives start and finish.

9 Alternative forms

Unless the question specifies otherwise, **accept** equivalent forms.

- As this is an international examination, accept all alternative forms of **notation**.
- In the markscheme, equivalent **numerical** and **algebraic** forms will generally be written in brackets immediately following the answer.
- In the markscheme, **simplified** answers, (which candidates often do not write in examinations), will generally appear in brackets. Marks should be awarded for either the form preceding the bracket or the form in brackets (if it is seen).

Example: for differentiating $f(x) = 2 \sin(5x - 3)$, the markscheme gives:

$$f'(x) = (2 \cos(5x - 3)) 5 \quad (= 10 \cos(5x - 3)) \quad \mathbf{A1}$$

Award **A1** for $(2 \cos(5x - 3)) 5$, even if $10 \cos(5x - 3)$ is not seen.

10 Accuracy of Answers

Candidates should **NO LONGER** be penalized for an accuracy error (**AP**).

*If the level of accuracy is specified in the question, a mark will be allocated for giving the answer to the required accuracy. When this is not specified in the question, all numerical answers should be given exactly or correct to three significant figures. Please check work carefully for **FT**.*

11 Crossed out work

If a candidate has drawn a line through work on their examination script, or in some other way crossed out their work, do not award any marks for that work.

12 Calculators

A GDC is required for paper 2, but calculators with symbolic manipulation features (for example, TI-89) are not allowed.

Calculator notation

The Mathematics HL guide says:

Students must always use correct mathematical notation, not calculator notation.

Do **not** accept final answers written using calculator notation. However, do not penalize the use of calculator notation in the working.

13 More than one solution

Where a candidate offers two or more different answers to the same question, an examiner should only mark the first response unless the candidate indicates otherwise.

14. Candidate work

Candidates are meant to write their answers to Section A on the question paper (QP), and Section B on answer booklets. Sometimes, they need more room for Section A, and use the booklet (and often comment to this effect on the QP), or write outside the box. This work should be marked.

The instructions tell candidates not to write on Section B of the QP. Thus they may well have done some rough work here which they assume will be ignored. If they have solutions on the answer booklets, there is no need to look at the QP. However, if there are whole questions or whole part solutions missing on answer booklets, please check to make sure that they are not on the QP, and if they are, mark those whole questions or whole part solutions that have not been written on answer booklets.

Section A

1. (a) $A = \frac{1}{2} \times 5 \times 12 \times \sin 100^\circ$ (M1)
 $= 29.5 \text{ (cm}^2\text{)}$ A1
 [2 marks]
- (b) $AC^2 = 5^2 + 12^2 - 2 \times 5 \times 12 \times \cos 100^\circ$ (M1)
 therefore $AC = 13.8 \text{ (cm)}$ A1
 [2 marks]
- Total [4 marks]**
2. (a) $\binom{11}{4} = \frac{11 \times 10 \times 9 \times 8}{4 \times 3 \times 2 \times 1} = 330$ (M1)A1
 [2 marks]
- (b) $\binom{5}{2} \times \binom{6}{2} = \frac{5 \times 4}{2 \times 1} \times \frac{6 \times 5}{2 \times 1}$ M1
 $= 150$ A1
 [2 marks]
- (c) **METHOD1**
 number of ways all men = $\binom{5}{4} = 5$
 $330 - 5 = 325$ M1A1
- Note:** Allow **FT** from answer obtained in part (a).

[2 marks]

continued...

Question 2 continued.

METHOD 2

$$\binom{6}{1}\binom{5}{3} + \binom{6}{2}\binom{5}{2} + \binom{6}{3}\binom{5}{1} + \binom{6}{4}$$

$$= 325$$

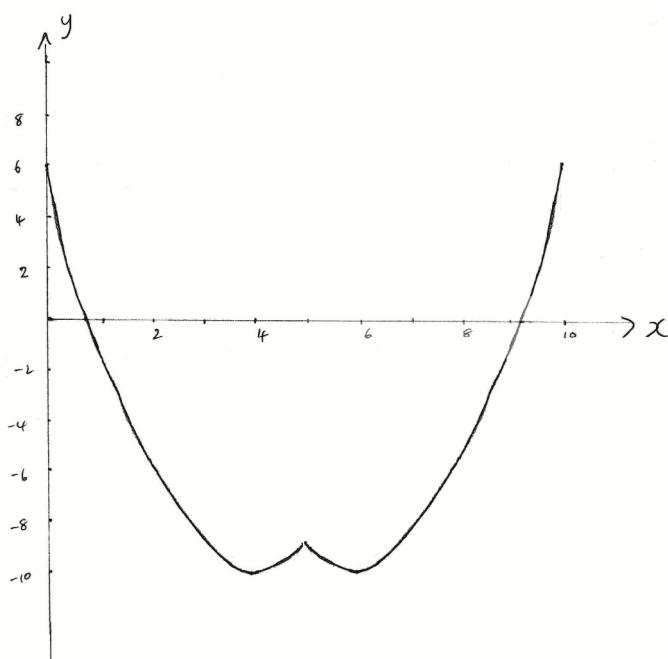
M1

A1

[2 marks]

Total [6 marks]

3. (a)



general shape including 2 minimums, cusp
correct domain and symmetrical about the middle ($x = 5$)

A1A1

A1

[3 marks]

(b) $x = 9.16$ or $x = 0.838$

A1A1

[2 marks]

Total [5 marks]

4. (a) (i) $X \sim Po(5)$
 $P(X \geq 8) = 0.133$ **(M1)A1**

(ii) $7 \times 0.133 \dots$ **M1**
 ≈ 0.934 days **A1**

Note: Accept "1 day".

[4 marks]

(b) $7 \times 5 = 35$ ($Y \sim Po(35)$) **(A1)**
 $P(Y \leq 29) = 0.177$ **(M1)A1**

[3 marks]

Total [7 marks]

5. (a) $\mathbf{u} \times \mathbf{v} = \begin{pmatrix} 2(0) + 2b \\ -2a - 1(0) \\ b - 2a \end{pmatrix} = \begin{pmatrix} 2b \\ -2a \\ b - 2a \end{pmatrix}$ **(M1)(A1)**

$\begin{pmatrix} 2b \\ -2a \\ b - 2a \end{pmatrix} = \begin{pmatrix} 4 \\ b \\ c \end{pmatrix}$ **(M1)**

$\Rightarrow a = -1, b = 2, c = 4$ **A2**

Note: Award **A1** for two correct.

[5 marks]

(b) $\mathbf{n} = \begin{pmatrix} 4 \\ 2 \\ 4 \end{pmatrix}$ **(A1)**

$\Rightarrow 4x + 2y + 4z = 0$ ($2x + y + 2z = 0$) **A1**

[2 marks]

Total [7 marks]

6. (a) **EITHER**

$$y = \ln(x-a) + b = \ln(5x+10) \quad (M1)$$

$$y = \ln(x-a) + \ln c = \ln(5x+10)$$

$$y = \ln(c(x-a)) = \ln(5x+10) \quad (M1)$$

OR

$$y = \ln(5x+10) = \ln(5(x+2)) \quad (M1)$$

$$y = \ln(5) + \ln(x+2) \quad (M1)$$

THEN

$$a = -2, b = \ln 5 \quad A1A1$$

Note: Accept graphical approaches.

Note: Accept $a = 2, b = 1.61$

$$(b) \quad V = \pi \int_e^{2e} [\ln(5x+10)]^2 dx$$

$$= 99.2$$

[4marks]**(M1)****A1****[2marks]****Total [6 marks]**

7. (a) $2x + y + 6z = 0$
 $4x + 3y + 14z = 4$
 $2x - 2y + (\alpha - 2)z = \beta - 12$

attempt at row reduction

M1

eg $R_2 - 2R_1$ and $R_3 - R_1$

$$\begin{aligned} 2x + y + 6z &= 0 \\ y + 2z &= 4 \\ -3y + (\alpha - 8)z &= \beta - 12 \end{aligned}$$

A1

eg $R_3 + 3R_2$

$$\begin{aligned} 2x + y + 6z &= 0 \\ y + 2z &= 4 \\ (\alpha - 2)z &= \beta \end{aligned}$$

A1

(i) no solutions if $\alpha = 2, \beta \neq 0$

A1

(ii) one solution if $\alpha \neq 2$

A1

(iii) infinite solutions if $\alpha = 2, \beta = 0$

A1

Note: Accept alternative methods e.g. determinant of a matrix

Note: Award **A1A1A0** if all three consistent with their reduced form, **A1A0A0** if two or one answer consistent with their reduced form.

[6 marks]

(b) $y + 2z = 4 \Rightarrow y = 4 - 2z$

A1

$$2x = -y - 6z = 2z - 4 - 6z = -4z - 4 \Rightarrow x = -2z - 2$$

A1

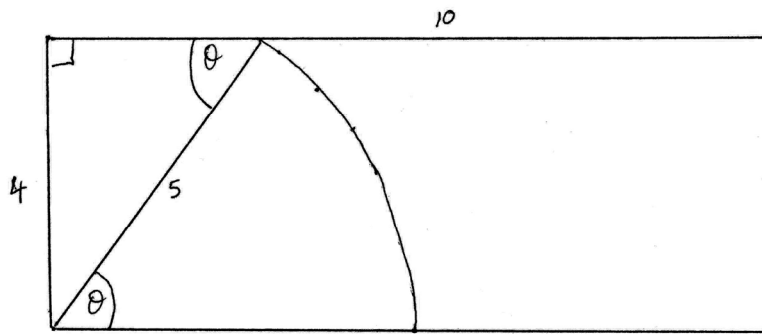
therefore Cartesian equation is $\frac{x+2}{-2} = \frac{y-4}{-2} = \frac{z}{1}$ or equivalent

A1

[3 marks]

Total [9 marks]

8. (a)

**EITHER**

$$\text{area of triangle} = \frac{1}{2} \times 3 \times 4 (= 6) \quad \text{A1}$$

$$\text{area of sector} = \frac{1}{2} \arcsin\left(\frac{4}{5}\right) \times 5^2 (= 11.5911\dots) \quad \text{A1}$$

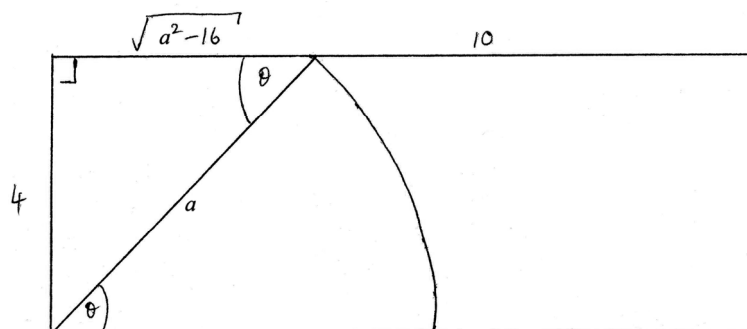
OR

$$\int_0^4 \sqrt{25 - x^2} dx \quad \text{M1A1}$$

THEN

$$\text{total area} = 17.5911\dots \text{m}^2 \quad \text{(A1)}$$

$$\text{percentage} = \frac{17.5911\dots}{40} \times 100 = 44\% \quad \text{A1}$$

[4 marks](b) **METHOD 1**

$$\text{area of triangle} = \frac{1}{2} \times 4 \times \sqrt{a^2 - 16} \quad \text{A1}$$

$$\theta = \arcsin\left(\frac{4}{a}\right) \quad \text{(A1)}$$

$$\text{area of sector} = \frac{1}{2} r^2 \theta = \frac{1}{2} a^2 \arcsin\left(\frac{4}{a}\right) \quad \text{A1}$$

$$\text{therefore total area} = 2\sqrt{a^2 - 16} + \frac{1}{2} a^2 \arcsin\left(\frac{4}{a}\right) = 20 \quad \text{A1}$$

$$\text{rearrange to give: } a^2 \arcsin\left(\frac{4}{a}\right) + 4\sqrt{a^2 - 16} = 40 \quad \text{AG}$$

continued...

Question 8 continued

METHOD 2

$$\int_0^4 \sqrt{a^2 - x^2} dx = 20$$

M1use substitution $x = a \sin \theta$, $\frac{dx}{d\theta} = a \cos \theta$

$$\int_0^{\arcsin\left(\frac{4}{a}\right)} a^2 \cos^2 \theta d\theta = 20$$

$$\frac{a^2}{2} \int_0^{\arcsin\left(\frac{4}{a}\right)} (\cos 2\theta + 1) d\theta = 20$$

M1

$$a^2 \left[\left(\frac{\sin 2\theta}{2} + \theta \right) \right]_0^{\arcsin\left(\frac{4}{a}\right)} = 40$$

A1

$$a^2 \left[(\sin \theta \cos \theta + \theta) \right]_0^{\arcsin\left(\frac{4}{a}\right)} = 40$$

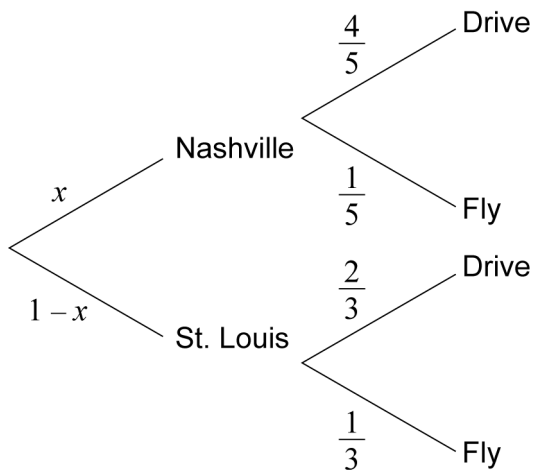
$$a^2 \arcsin\left(\frac{4}{a}\right) + a^2 \left(\frac{4}{a}\right) \sqrt{1 - \left(\frac{4}{a}\right)^2} = 40$$

A1

$$a^2 \arcsin\left(\frac{4}{a}\right) + 4\sqrt{a^2 - 16} = 40$$

AG**[4 marks]**(c) solving using GDC $\Rightarrow a = 5.53$ cm**A2****[2 marks]****Total [10 marks]**

9.



- (a) attempt to set up the problem using a tree diagram and/or an equation, with the unknown x

M1

$$\frac{4}{5}x + \frac{2}{3}(1-x) = \frac{13}{18}$$

A1

$$\frac{4x}{5} - \frac{2x}{3} = \frac{13}{18} - \frac{2}{3}$$

$$\frac{2x}{15} = \frac{1}{18}$$

$$x = \frac{5}{12}$$

A1**[3 marks]**

- (b) attempt to set up the problem using conditional probability

M1**EITHER**

$$\frac{\frac{5}{12} \times \frac{1}{5}}{1 - \frac{13}{18}}$$

A1**OR**

$$\frac{\frac{5}{12} \times \frac{1}{5}}{\frac{1}{12} + \frac{7}{36}}$$

A1**THEN**

$$= \frac{3}{10}$$

A1**[3 marks]****Total [6 marks]**

Section B

10. (a) (i) $P(110 < X < 130) = 0.49969... = 0.500 = 50.0\%$

(M1)A1

Note: Accept 50

Note: Award **M1A0** for 0.50 (0.500)

(ii) $P(X > 130) = (1 - 0.707...) = 0.293...$
 expected number of turnips = 29.3

M1**A1**

Note: Accept 29.

(iii) no of turnips weighing more than 130 is $Y \sim B(100, 0.293)$
 $P(Y \geq 30) = 0.478$

M1**A1****[6 marks]**

(b) (i) $X \sim N(144, \sigma^2)$

$$P(X \leq 130) = \frac{1}{15} = 0.0667$$

(M1)

$$P\left(Z \leq \frac{130 - 144}{\sigma}\right) = 0.0667$$

$$\frac{14}{\sigma} = 1.501$$

(A1)

$$\sigma = 9.33 \text{ g}$$

A1

(ii) $P(X > 150 | X > 130) = \frac{P(X > 150)}{P(X > 130)}$

M1

$$= \frac{0.26008...}{1 - 0.06667} = 0.279$$

A1

expected number of turnips = 55.7

A1**[6 marks]****Total [12 marks]**

11. (a) attempt at implicit differentiation

M1

$$2x - 5x \frac{dy}{dx} - 5y + 2y \frac{dy}{dx} = 0$$

A1A1

Note: **A1** for differentiation of $x^2 - 5xy$, **A1** for differentiation of y^2 and 7.

$$2x - 5y + \frac{dy}{dx}(2y - 5x) = 0$$

$$\frac{dy}{dx} = \frac{5y - 2x}{2y - 5x}$$

AG**[3 marks]**

(b) $\frac{dy}{dx} = \frac{5 \times 1 - 2 \times 6}{2 \times 1 - 5 \times 6} = \frac{1}{4}$

A1

gradient of normal = -4

A1

equation of normal $y = -4x + c$

M1

substitution of (6, 1)

$$y = -4x + 25$$

A1

Note: Accept $y - 1 = -4(x - 6)$

[4 marks]

(c) setting $\frac{5y - 2x}{2y - 5x} = 1$

M1

$$y = -x$$

A1

substituting into original equation

M1

$$x^2 + 5x^2 + x^2 = 7$$

(A1)

$$7x^2 = 7$$

$$x = \pm 1$$

A1

points (1, -1) and (-1, 1)

(A1)

$$\text{distance} = \sqrt{8} (= 2\sqrt{2})$$

(M1)A1**[8 marks]****Total [15 marks]**

12. (a) **METHOD 1**

$$s = \int (9t - 3t^2) dt = \frac{9}{2}t^2 - t^3 (+c) \quad (M1)$$

$$t = 0, s = 3 \Rightarrow c = 3 \quad (A1)$$

$$t = 4 \Rightarrow s = 11 \quad A1$$

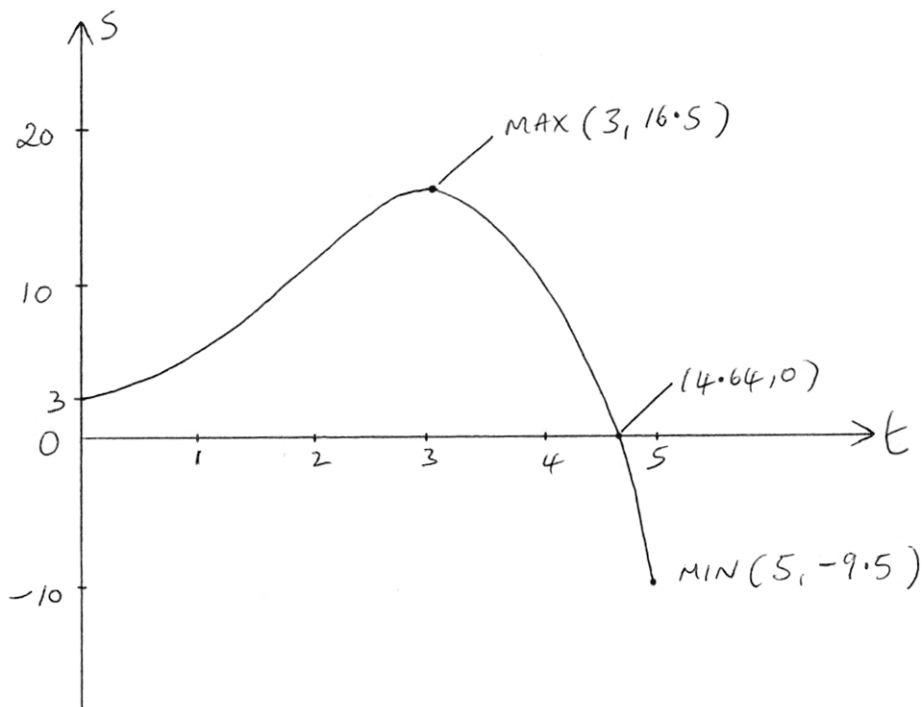
[3 marks]**METHOD 2**

$$s = 3 + \int_0^4 (9t - 3t^2) dt \quad (M1)(A1)$$

$$s = 11 \quad A1$$

[3 marks]

$$(b) \quad s = 3 + \frac{9}{2}t^2 - t^3 \quad (A1)$$



correct shape over correct domain

maximum at (3, 16.5)

t intercept at 4.64, s intercept at 3

minimum at (5, -9.5)

A1**A1****A1****A1****[5 marks]**

continued...

Question 12 continued

$$(c) \quad \begin{aligned} -9.5 &= a + b \cos 2\pi \\ 16.5 &= a + b \cos 3\pi \end{aligned}$$

(M1)

Note: Only award **M1** if two simultaneous equations are formed over the correct domain.

$$a = \frac{7}{2}$$

A1

$$b = -13$$

A1

[3 marks]

(d) at t_1 :

$$3 + \frac{9}{2}t^2 - t^3 = 3$$

(M1)

$$t^2 \left(\frac{9}{2} - t \right) = 0$$

$$t_1 = \frac{9}{2}$$

A1

$$\text{solving } \frac{7}{2} - 13 \cos \frac{2\pi t}{5} = 3$$

(M1)

$$\text{GDC} \Rightarrow t_2 = 6.22$$

A1

Note: Accept graphical approaches.

[4 marks]

Total [15 marks]

13. (a) L_1 and L_2 are not parallel, since $\begin{pmatrix} -1 \\ 1 \\ 2 \end{pmatrix} \neq k \begin{pmatrix} 2 \\ 1 \\ 6 \end{pmatrix}$ **R1**

if they meet, then $1 - \lambda = 1 + 2\mu$ and $2 + \lambda = 2 + \mu$ **M1**
 solving simultaneously $\Rightarrow \lambda = \mu = 0$ **A1**
 $2 + 2\lambda = 4 + 6\mu \Rightarrow 2 \neq 4$ contradiction, **R1**
 so lines are skew **AG**

Note: Do not award the second **R1** if their values of parameters are incorrect.

[4 marks]

(b) $\begin{pmatrix} -1 \\ 1 \\ 2 \end{pmatrix} \cdot \begin{pmatrix} 2 \\ 1 \\ 6 \end{pmatrix} (= 11) = \sqrt{6}\sqrt{41} \cos \theta$ **M1A1**

$\cos \theta = \frac{11}{\sqrt{246}}$ **(A1)**

$\theta = 45.5^\circ$ (0.794 radians) **A1**

[4 marks]

(c) (i) $\begin{pmatrix} -1 \\ 1 \\ 2 \end{pmatrix} \times \begin{pmatrix} 2 \\ 1 \\ 6 \end{pmatrix} = \begin{pmatrix} 6-2 \\ 4+6 \\ -1-2 \end{pmatrix}$ **(M1)**

$= \begin{pmatrix} 4 \\ 10 \\ -3 \end{pmatrix} = 4\mathbf{i} + 10\mathbf{j} - 3\mathbf{k}$ **A1**

continued...

Question 13 continued

(ii) **METHOD 1**let P be the intersection of L_1 and L_3 let Q be the intersection of L_2 and L_3

$$\vec{OP} = \begin{pmatrix} 1-\lambda \\ 2+\lambda \\ 2+2\lambda \end{pmatrix} \quad \vec{OQ} = \begin{pmatrix} 1+2\mu \\ 2+\mu \\ 4+6\mu \end{pmatrix} \quad \text{M1}$$

$$\text{therefore } \vec{PQ} = \vec{OQ} - \vec{OP} = \begin{pmatrix} 2\mu + \lambda \\ \mu - \lambda \\ 2 + 6\mu - 2\lambda \end{pmatrix} \quad \text{M1A1}$$

$$\begin{pmatrix} 2\mu + \lambda \\ \mu - \lambda \\ 2 + 6\mu - 2\lambda \end{pmatrix} = t \begin{pmatrix} 4 \\ 10 \\ -3 \end{pmatrix} \quad \text{M1}$$

$$2\mu + \lambda - 4t = 0$$

$$\mu - \lambda - 10t = 0$$

$$6\mu - 2\lambda + 3t = -2$$

solving simultaneously (M1)

$$\lambda = \frac{32}{125}(0.256), \quad \mu = -\frac{28}{125}(-0.224) \quad \text{A1}$$

Note: Award **A1** for either correct λ or μ .

EITHER

$$\text{therefore } \vec{OP} = \begin{pmatrix} 1-\lambda \\ 2+\lambda \\ 2+2\lambda \end{pmatrix} = \begin{pmatrix} \frac{93}{125} \\ \frac{282}{125} \\ \frac{314}{125} \end{pmatrix} = \begin{pmatrix} 0.744 \\ 2.256 \\ 2.512 \end{pmatrix} \quad \text{A1}$$

$$\text{therefore } L_3 : r_3 = \begin{pmatrix} 0.744 \\ 2.256 \\ 2.512 \end{pmatrix} + \alpha \begin{pmatrix} 4 \\ 10 \\ -3 \end{pmatrix} \quad \text{A1}$$

continued...

Question 13 continued

OR

$$\text{therefore } \vec{OQ} = \begin{pmatrix} 1+2\mu \\ 2+\mu \\ 4+6\mu \end{pmatrix} = \begin{pmatrix} \frac{69}{125} \\ \frac{222}{125} \\ \frac{332}{125} \end{pmatrix} = \begin{pmatrix} 0.552 \\ 1.776 \\ 2.656 \end{pmatrix}$$

A1

$$\text{therefore } L_3 : r_3 = \begin{pmatrix} 0.552 \\ 1.776 \\ 2.656 \end{pmatrix} + \alpha \begin{pmatrix} 4 \\ 10 \\ -3 \end{pmatrix}$$

A1

Note: Allow position vector(s) to be expressed in decimal or fractional form.

[10 marks]

METHOD 2

$$L_3 : r_3 = \begin{pmatrix} a \\ b \\ c \end{pmatrix} + t \begin{pmatrix} 4 \\ 10 \\ -3 \end{pmatrix}$$

forming two equations as intersections with L_1 and L_2

$$\begin{pmatrix} a \\ b \\ c \end{pmatrix} + t_1 \begin{pmatrix} 4 \\ 10 \\ -3 \end{pmatrix} = \begin{pmatrix} 1 \\ 2 \\ 2 \end{pmatrix} + \lambda \begin{pmatrix} -1 \\ 1 \\ 2 \end{pmatrix}$$

$$\begin{pmatrix} a \\ b \\ c \end{pmatrix} + t_2 \begin{pmatrix} 4 \\ 10 \\ -3 \end{pmatrix} = \begin{pmatrix} 1 \\ 2 \\ 4 \end{pmatrix} + \mu \begin{pmatrix} 2 \\ 1 \\ 6 \end{pmatrix}$$

M1A1A1

Note: Only award **M1A1A1** if two different parameters t_1, t_2 used.

attempting to solve simultaneously

M1

$$\lambda = \frac{32}{125}(0.256), \mu = -\frac{28}{125}(-0.224)$$

A1

Note: Award **A1** for either correct λ or μ .

continued...

Question 13 continued

EITHER

$$\begin{pmatrix} a \\ b \\ c \end{pmatrix} = \begin{pmatrix} 0.552 \\ 1.776 \\ 2.656 \end{pmatrix}$$

A1

$$\text{therefore } L_3 : r_3 = \begin{pmatrix} 0.552 \\ 1.776 \\ 2.656 \end{pmatrix} + t \begin{pmatrix} 4 \\ 10 \\ -3 \end{pmatrix}$$

A1A1

OR

$$\begin{pmatrix} a \\ b \\ c \end{pmatrix} = \begin{pmatrix} 0.744 \\ 2.256 \\ 2.512 \end{pmatrix}$$

A1

$$\text{therefore } L_3 : r_3 = \begin{pmatrix} 0.744 \\ 2.256 \\ 2.512 \end{pmatrix} + t \begin{pmatrix} 4 \\ 10 \\ -3 \end{pmatrix}$$

A1A1

Note: Allow position vector(s) to be expressed in decimal or fractional form.

Total [18 marks]
