

Markscheme

May 2019

Mathematics

Higher level

Paper 1

No part of this product may be reproduced in any form or by any electronic or mechanical means, including information storage and retrieval systems, without written permission from the IB.

Additionally, the license tied with this product prohibits commercial use of any selected files or extracts from this product. Use by third parties, including but not limited to publishers, private teachers, tutoring or study services, preparatory schools, vendors operating curriculum mapping services or teacher resource digital platforms and app developers, is not permitted and is subject to the IB's prior written consent via a license. More information on how to request a license can be obtained from <http://www.ibo.org/contact-the-ib/media-inquiries/for-publishers/guidance-for-third-party-publishers-and-providers/how-to-apply-for-a-license>.

Aucune partie de ce produit ne peut être reproduite sous quelque forme ni par quelque moyen que ce soit, électronique ou mécanique, y compris des systèmes de stockage et de récupération d'informations, sans l'autorisation écrite de l'IB.

De plus, la licence associée à ce produit interdit toute utilisation commerciale de tout fichier ou extrait sélectionné dans ce produit. L'utilisation par des tiers, y compris, sans toutefois s'y limiter, des éditeurs, des professeurs particuliers, des services de tutorat ou d'aide aux études, des établissements de préparation à l'enseignement supérieur, des fournisseurs de services de planification des programmes d'études, des gestionnaires de plateformes pédagogiques en ligne, et des développeurs d'applications, n'est pas autorisée et est soumise au consentement écrit préalable de l'IB par l'intermédiaire d'une licence. Pour plus d'informations sur la procédure à suivre pour demander une licence, rendez-vous à l'adresse <http://www.ibo.org/fr/contact-the-ib/media-inquiries/for-publishers/guidance-for-third-party-publishers-and-providers/how-to-apply-for-a-license>.

No se podrá reproducir ninguna parte de este producto de ninguna forma ni por ningún medio electrónico o mecánico, incluidos los sistemas de almacenamiento y recuperación de información, sin que medie la autorización escrita del IB.

Además, la licencia vinculada a este producto prohíbe el uso con fines comerciales de todo archivo o fragmento seleccionado de este producto. El uso por parte de terceros —lo que incluye, a título enunciativo, editoriales, profesores particulares, servicios de apoyo académico o ayuda para el estudio, colegios preparatorios, desarrolladores de aplicaciones y entidades que presten servicios de planificación curricular u ofrezcan recursos para docentes mediante plataformas digitales— no está permitido y estará sujeto al otorgamiento previo de una licencia escrita por parte del IB. En este enlace encontrará más información sobre cómo solicitar una licencia: <http://www.ibo.org/es/contact-the-ib/media-inquiries/for-publishers/guidance-for-third-party-publishers-and-providers/how-to-apply-for-a-license>.

Instructions to Examiners

Abbreviations

- M** Marks awarded for attempting to use a valid **Method**; working must be seen.
- (M)** Marks awarded for **Method**; may be implied by **correct** subsequent working.
- A** Marks awarded for an **Answer** or for **Accuracy**; often dependent on preceding **M** marks.
- (A)** Marks awarded for an **Answer** or for **Accuracy**; may be implied by **correct** subsequent working.
- R** Marks awarded for clear **Reasoning**.
- N** Marks awarded for **correct** answers if **no** working shown.
- AG** Answer given in the question and so no marks are awarded.

Using the markscheme

1 General

Mark according to RM™ Assessor instructions. In particular, please note the following:

- Marks must be recorded using the annotation stamps. Please check that you are entering marks for the right question.
- If a part is **completely correct**, (and gains all the “must be seen” marks), use the ticks with numbers to stamp full marks.
- If a part is completely wrong, stamp **A0** by the final answer.
- If a part gains anything else, it **must** be recorded using **all** the annotations.
- All the marks will be added and recorded by RM™ Assessor.

2 Method and Answer/Accuracy marks

- Do **not** automatically award full marks for a correct answer; all working **must** be checked, and marks awarded according to the markscheme.
- It is not possible to award **M0** followed by **A1**, as **A** mark(s) depend on the preceding **M** mark(s), if any.
- Where **M** and **A** marks are noted on the same line, eg **M1A1**, this usually means **M1** for an **attempt** to use an appropriate method (eg substitution into a formula) and **A1** for using the **correct** values.
- Where the markscheme specifies (**M2**), **N3**, etc., do **not** split the marks.

- Once a correct answer to a question or part-question is seen, ignore further correct working. However, if further working indicates a lack of mathematical understanding do not award the final **A1**. An exception to this may be in numerical answers, where a correct exact value is followed by an incorrect decimal. However, if the incorrect decimal is carried through to a subsequent part, and correct **FT** working shown, award **FT** marks as appropriate but do not award the final **A1** in that part.

Examples

	Correct answer seen	Further working seen	Action
1.	$8\sqrt{2}$	5.65685... (incorrect decimal value)	Award the final A1 (ignore the further working)
2.	$\frac{1}{4}\sin 4x$	$\sin x$	Do not award the final A1
3.	$\log a - \log b$	$\log(a - b)$	Do not award the final A1

3 N marks

Award **N** marks for **correct** answers where there is **no** working.

- Do **not** award a mixture of **N** and other marks.
- There may be fewer **N** marks available than the total of **M**, **A** and **R** marks; this is deliberate as it penalizes candidates for not following the instruction to show their working.

4 Implied marks

Implied marks appear in **brackets eg (M1)**, and can only be awarded if **correct** work is seen or if implied in subsequent working.

- Normally the correct work is seen or implied in the next line.
- Marks **without** brackets can only be awarded for work that is **seen**.

5 Follow through marks

Follow through (**FT**) marks are awarded where an incorrect answer from one **part** of a question is used correctly in **subsequent** part(s). To award **FT** marks, **there must be working present** and not just a final answer based on an incorrect answer to a previous part.

- If the question becomes much simpler because of an error then use discretion to award fewer **FT** marks.
- If the error leads to an inappropriate value (eg $\sin \theta = 1.5$), do not award the mark(s) for the final answer(s).
- Within a question part, once an error is made, no further **dependent A** marks can be awarded, but **M** marks may be awarded if appropriate.
- Exceptions to this rule will be explicitly noted on the markscheme.

6 Misread

If a candidate incorrectly copies information from the question, this is a misread (**MR**). A candidate should be penalized only once for a particular misread. Use the **MR** stamp to indicate that this has been a misread. Then deduct the first of the marks to be awarded, even if this is an **M** mark, but award all others so that the candidate only loses [**1 mark**].

- If the question becomes much simpler because of the **MR**, then use discretion to award fewer marks.
- If the **MR** leads to an inappropriate value (eg $\sin \theta = 1.5$), do not award the mark(s) for the final answer(s).

7 Discretionary marks (d)

An examiner uses discretion to award a mark on the rare occasions when the markscheme does not cover the work seen. In such cases the annotation **DM** should be used and a brief **note** written next to the mark explaining this decision.

8 Alternative methods

Candidates will sometimes use methods other than those in the markscheme. Unless the question specifies a method, other correct methods should be marked in line with the markscheme. If in doubt, contact your team leader for advice.

- Alternative methods for complete questions are indicated by **METHOD 1**, **METHOD 2**, etc.
- Alternative solutions for part-questions are indicated by **EITHER . . . OR**.
- Where possible, alignment will also be used to assist examiners in identifying where these alternatives start and finish.

9 Alternative forms

Unless the question specifies otherwise, **accept** equivalent forms.

- As this is an international examination, accept all alternative forms of **notation**.
- In the markscheme, equivalent **numerical** and **algebraic** forms will generally be written in brackets immediately following the answer.
- In the markscheme, **simplified** answers, (which candidates often do not write in examinations), will generally appear in brackets. Marks should be awarded for either the form preceding the bracket or the form in brackets (if it is seen).

Example: for differentiating $f(x) = 2 \sin(5x - 3)$, the markscheme gives

$$f'(x) = (2 \cos(5x - 3)) 5 \quad (= 10 \cos(5x - 3)) \quad \mathbf{A1}$$

Award **A1** for $(2 \cos(5x - 3)) 5$, even if $10 \cos(5x - 3)$ is not seen.

10 Accuracy of Answers

Candidates should **NO LONGER** be penalized for an accuracy error (**AP**).

*If the level of accuracy is specified in the question, a mark will be allocated for giving the answer to the required accuracy. When this is not specified in the question, all numerical answers should be given exactly or correct to three significant figures. Please check work carefully for **FT**.*

11 Crossed out work

If a candidate has drawn a line through work on their examination script, or in some other way crossed out their work, do not award any marks for that work.

12 Calculators

No calculator is allowed. The use of any calculator on paper 1 is malpractice, and will result in no grade awarded. If you see work that suggests a candidate has used any calculator, please follow the procedures for malpractice. Examples: finding an angle, given a trig ratio of 0.4235.

13 More than one solution

Where a candidate offers two or more different answers to the same question, an examiner should only mark the first response unless the candidate indicates otherwise.

14. Candidate work

Candidates are meant to write their answers to Section A on the question paper (QP), and Section B on answer booklets. Sometimes, they need more room for Section A, and use the booklet (and often comment to this effect on the QP), or write outside the box. This work should be marked.

The instructions tell candidates not to write on Section B of the QP. Thus they may well have done some rough work here which they assume will be ignored. If they have solutions on the answer booklets, there is no need to look at the QP. However, if there are whole questions or whole part solutions missing on answer booklets, please check to make sure that they are not on the QP, and if they are, mark those whole questions or whole part solutions that have not been written on answer booklets.

Section A

1. attempting to form two equations involving u_1 and d

M1

$$(u_1 + 2d) + (u_1 + 7d) = 1 \text{ and } \frac{7}{2}[2u_1 + 6d] = 35$$

$$2u_1 + 9d = 1$$

$$14u_1 + 42d = 70 \text{ (} 2u_1 + 6d = 10 \text{)}$$

A1

Note: Award **A1** for any two correct equations

attempting to solve their equations:

M1

$$u_1 = 14, d = -3$$

A1

[4 marks]

2. (a) (i) $\vec{AB} = \begin{pmatrix} 0 \\ 2 \\ -2 \end{pmatrix}$

A1

(ii) $\vec{AC} = \begin{pmatrix} 3 \\ 1 \\ -2 \end{pmatrix}$

A1

Note: Accept row vectors or equivalent.

[2 marks]

- (b) **METHOD 1**

attempt at vector product using \vec{AB} and \vec{AC} .
 $\pm(2\mathbf{i} + 6\mathbf{j} + 6\mathbf{k})$

(M1)

A1

attempt to use area = $\frac{1}{2} |\vec{AB} \times \vec{AC}|$

M1

$$= \frac{\sqrt{76}}{2} (= \sqrt{19})$$

A1

[4 marks]

continued...

Question 2 continued

METHOD 2

$$\text{attempt to use } \vec{AB} \cdot \vec{AC} = |\vec{AB}| |\vec{AC}| \cos \theta \quad \mathbf{M1}$$

$$\begin{pmatrix} 0 \\ 2 \\ -2 \end{pmatrix} \cdot \begin{pmatrix} 3 \\ 1 \\ -2 \end{pmatrix} = \sqrt{0^2 + 2^2 + (-2)^2} \sqrt{3^2 + 1^2 + (-2)^2} \cos \theta$$

$$6 = \sqrt{8} \sqrt{14} \cos \theta \quad \mathbf{A1}$$

$$\cos \theta = \frac{6}{\sqrt{8} \sqrt{14}} = \frac{6}{\sqrt{112}}$$

$$\text{attempt to use area} = \frac{1}{2} |\vec{AB}| |\vec{AC}| \sin \theta \quad \mathbf{M1}$$

$$= \frac{1}{2} \sqrt{8} \sqrt{14} \sqrt{1 - \frac{36}{112}} \left(= \frac{1}{2} \sqrt{8} \sqrt{14} \sqrt{\frac{76}{112}} \right)$$

$$= \frac{\sqrt{76}}{2} (= \sqrt{19}) \quad \mathbf{A1}$$

[4 marks]**Total [6 marks]**

$$3. \quad g(x) = f(x+2) = (x+2)^4 - 6(x+2)^2 - 2(x+2) + 4 \quad \mathbf{M1}$$

$$\text{attempt to expand } (x+2)^4 \quad \mathbf{M1}$$

$$(x+2)^4 = x^4 + 4(2x^3) + 6(2^2x^2) + 4(2^3x) + 2^4 \quad \mathbf{(A1)}$$

$$= x^4 + 8x^3 + 24x^2 + 32x + 16 \quad \mathbf{A1}$$

$$g(x) = x^4 + 8x^3 + 24x^2 + 32x + 16 - 6(x^2 + 4x + 4) - 2x - 4 + 4$$

$$= x^4 + 8x^3 + 18x^2 + 6x - 8 \quad \mathbf{A1}$$

Note: For correct expansion of $f(x-2) = x^4 - 8x^3 + 18x^2 - 10x$ award max M0M1(A1)A0A1 .

[5 marks]

4. $u = \sin x \Rightarrow du = \cos x dx$ (A1)
 valid attempt to write integral in terms of u and du M1

$$\int \frac{\cos^3 x dx}{\sqrt{\sin x}} = \int \frac{(1-u^2) du}{\sqrt{u}} \quad \text{A1}$$

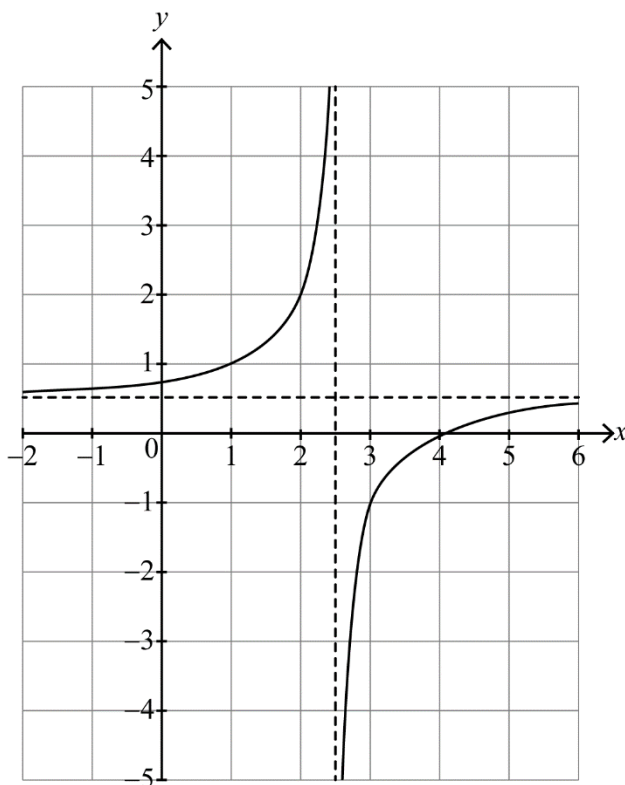
$$= \int \left(u^{-\frac{1}{2}} - u^{\frac{3}{2}} \right) du$$

$$= 2u^{\frac{1}{2}} - \frac{2u^{\frac{5}{2}}}{5} (+c) \quad \text{(A1)}$$

$$= 2\sqrt{\sin x} - \frac{2(\sqrt{\sin x})^5}{5} (+c) \text{ or equivalent} \quad \text{A1}$$

[5 marks]

5. (a)



correct shape: two branches in correct quadrants with asymptotic behaviour A1

crosses at $(4, 0)$ and $\left(0, \frac{4}{5}\right)$ A1A1

asymptotes at $x = \frac{5}{2}$ and $y = \frac{1}{5}$ A1A1

[5 marks]

continued...

Question 5 continued

(b) (i) $x < \frac{5}{2}, x \geq 4$ **A1A1**

(ii) $f(x) \geq 0, f(x) \neq \frac{1}{\sqrt{2}} (f(x) \in \mathbb{R})$ **A1**

Note: Follow through from their graph, as long as it is a rectangular hyperbola.

Note: Allow range expressed in terms of y .

[3 marks]

Total [8 marks]

6. (a) attempt to differentiate implicitly **M1**

$$\frac{dy}{dx} = x \sec^2\left(\frac{\pi xy}{4}\right) \left[\frac{\pi}{4} x \frac{dy}{dx} + \frac{\pi}{4} y \right] + \tan\left(\frac{\pi xy}{4}\right)$$
A1A1

Note: Award **A1** for each term.

attempt to substitute $x = 1, y = 1$ into their equation for $\frac{dy}{dx}$ **M1**

$$\frac{dy}{dx} = \frac{\pi}{2} \frac{dy}{dx} + \frac{\pi}{2} + 1$$

$$\frac{dy}{dx} \left(1 - \frac{\pi}{2}\right) = \frac{\pi}{2} + 1$$
A1

$$\frac{dy}{dx} = \frac{2 + \pi}{2 - \pi}$$
AG

[5 marks]

(b) attempt to use gradient of normal $= \frac{-1}{\frac{dy}{dx}}$ **(M1)**

$$= \frac{\pi - 2}{\pi + 2}$$

so equation of normal is $y - 1 = \frac{\pi - 2}{\pi + 2}(x - 1)$ or $y = \frac{\pi - 2}{\pi + 2}x + \frac{4}{\pi + 2}$ **A1**

[2 marks]

Total [7 marks]

7. use of at least one “log rule” applied correctly for the first equation **M1**
- $$\log_2 6x = \log_2 2 + 2\log_2 y$$
- $$= \log_2 2 + \log_2 y^2$$
- $$= \log_2 (2y^2)$$
- $$\Rightarrow 6x = 2y^2$$
- use of at least one “log rule” applied correctly for the second equation **M1**
- $$\log_6 (15y - 25) = 1 + \log_6 x$$
- $$= \log_6 6 + \log_6 x$$
- $$= \log_6 6x$$
- $$\Rightarrow 15y - 25 = 6x$$
- attempt to eliminate x (or y) from their two equations **M1**
- $$2y^2 = 15y - 25$$
- $$2y^2 - 15y + 25 = 0$$
- $$(2y - 5)(y - 5) = 0$$
- $$x = \frac{25}{12}, y = \frac{5}{2},$$
- or $x = \frac{25}{3}, y = 5$ **A1**

Note: x, y values do not have to be “paired” to gain either of the final two **A** marks.

[7 marks]

8. (a) attempt to use Pythagoras in triangle OXB **M1**
- $$\Rightarrow r^2 = R^2 - (h - R)^2$$
- substitution of their r^2 into formula for volume of cone $V = \frac{\pi r^2 h}{3}$ **M1**
- $$= \frac{\pi h}{3} (R^2 - (h - R)^2)$$
- $$= \frac{\pi h}{3} (R^2 - (h^2 + R^2 - 2hR))$$
- A1**

Note: This **A** mark is independent and may be seen anywhere for the correct expansion of $(h - R)^2$.

$$= \frac{\pi h}{3} (2hR - h^2)$$

$$= \frac{\pi}{3} (2Rh^2 - h^3)$$

AG

[4 marks]

continued...

Question 8 continued

(b) at max, $\frac{dV}{dh} = 0$ **R1**

$$\frac{dV}{dh} = \frac{\pi}{3}(4Rh - 3h^2)$$

$$\Rightarrow 4Rh = 3h^2$$

$$\Rightarrow h = \frac{4R}{3} \text{ (since } h \neq 0) \quad \text{A1}$$

EITHER

$$V_{\max} = \frac{\pi}{3}(2Rh^2 - h^3) \text{ from part (a)}$$

$$= \frac{\pi}{3} \left(2R \left(\frac{4R}{3} \right)^2 - \left(\frac{4R}{3} \right)^3 \right) \quad \text{A1}$$

$$= \frac{\pi}{3} \left(2R \frac{16R^2}{9} - \left(\frac{64R^3}{27} \right) \right) \quad \text{A1}$$

OR

$$r^2 = R^2 - \left(\frac{4R}{3} - R \right)^2$$

$$r^2 = R^2 - \frac{R^2}{9} = \frac{8R^2}{9} \quad \text{A1}$$

$$\Rightarrow V_{\max} = \frac{\pi r^2}{3} \left(\frac{4R}{3} \right)$$

$$= \frac{4\pi R}{9} \left(\frac{8R^2}{9} \right) \quad \text{A1}$$

THEN

$$= \frac{32\pi R^3}{81} \quad \text{AG}$$

[4 marks]

Total [8 marks]

Section B

9. (a) $3 \cos 2x = 4 - 11 \cos x$

attempt to form a quadratic in $\cos x$

M1

$$3(2 \cos^2 x - 1) = 4 - 11 \cos x$$

A1

$$(6 \cos^2 x + 11 \cos x - 7 = 0)$$

valid attempt to solve their quadratic

M1

$$(3 \cos x + 7)(2 \cos x - 1) = 0$$

$$\cos x = \frac{1}{2}$$

A1

$$x = \frac{\pi}{3}, \frac{5\pi}{3}$$

A1A1

Note: Ignore any "extra" solutions.

[6 marks]

(b) consider $(\pm) \int_{\frac{\pi}{3}}^{\frac{5\pi}{3}} (4 - 11 \cos x - 3 \cos 2x) dx$

M1

$$= (\pm) \left[4x - 11 \sin x - \frac{3}{2} \sin 2x \right]_{\frac{\pi}{3}}^{\frac{5\pi}{3}}$$

A1

Note: Ignore lack of or incorrect limits at this stage.

attempt to substitute their limits into their integral

M1

$$= \frac{20\pi}{3} - 11 \sin \frac{5\pi}{3} - \frac{3}{2} \sin \frac{10\pi}{3} - \left(\frac{4\pi}{3} - 11 \sin \frac{\pi}{3} - \frac{3}{2} \sin \frac{2\pi}{3} \right)$$

$$= \frac{16\pi}{3} + \frac{11\sqrt{3}}{2} + \frac{3\sqrt{3}}{4} + \frac{11\sqrt{3}}{2} + \frac{3\sqrt{3}}{4}$$

$$= \frac{16\pi}{3} + \frac{25\sqrt{3}}{2}$$

A1A1

[5 marks]

(c) attempt to differentiate both functions and equate

M1

$$-6 \sin 2x = 11 \sin x$$

A1

attempt to solve for x

M1

$$11 \sin x + 12 \sin x \cos x = 0$$

$$\sin x(11 + 12 \cos x) = 0$$

$$\cos x = -\frac{11}{12} \quad (\text{or } \sin x = 0)$$

A1

$$\Rightarrow y = 4 - 11 \left(-\frac{11}{12} \right)$$

M1

$$y = \frac{169}{12} \left(= 14 \frac{1}{12} \right)$$

A1

[6 marks]

Total [17 marks]

10. (a) mode is 0 A1
[1 mark]
- (b) (i) attempt at integration by parts (M1)

$$\frac{du}{dx} = \frac{1}{\sqrt{1-x^2}}, dv = dx$$

$$= x \arcsin x - \int \frac{x dx}{\sqrt{1-x^2}}$$

$$= x \arcsin x + \sqrt{1-x^2} (+c)$$
A1
A1
- (ii)
$$\int_0^1 (\pi - \arcsin x) dx = \left[\pi x - x \arcsin x - \sqrt{1-x^2} \right]_0^1$$

$$= \left(\pi - \frac{\pi}{2} - 0 \right) - (0 - 0 - 1) = \frac{\pi}{2} + 1$$

$$= \frac{\pi + 2}{2}$$
A1
A1
- $$\int_0^1 k(\pi - \arcsin x) dx = 1$$
 (M1)

Note: This line can be seen (or implied) anywhere.

Note: Do not allow **FT A** marks from bi to bii.

$$k \left(\frac{\pi + 2}{2} \right) = 1$$

$$\Rightarrow k = \frac{2}{2 + \pi}$$

AG

[6 marks]

- (c) (i) attempt to use product rule to differentiate M1

$$\frac{dy}{dx} = x \arcsin x + \frac{x^2}{2\sqrt{1-x^2}} - \frac{1}{4\sqrt{1-x^2}} - \frac{x^2}{4\sqrt{1-x^2}} + \frac{\sqrt{1-x^2}}{4}$$
A2

Note: Award **A2** for all terms correct, **A1** for 4 correct terms.

$$= x \arcsin x + \frac{2x^2}{4\sqrt{1-x^2}} - \frac{1}{4\sqrt{1-x^2}} - \frac{x^2}{4\sqrt{1-x^2}} + \frac{1-x^2}{4\sqrt{1-x^2}}$$
A1

Note: Award **A1** for equivalent combination of correct terms over a common denominator.

$$= x \arcsin x$$

AG

continued...

Question 10 continued

$$\begin{aligned}
 \text{(ii)} \quad E(X) &= k \int_0^1 x(\pi - \arcsin x) \, dx && \mathbf{M1} \\
 &= k \int_0^1 (\pi x - x \arcsin x) \, dx \\
 &= k \left[\frac{\pi x^2}{2} - \frac{x^2}{2} \arcsin x + \frac{1}{4} \arcsin x - \frac{x}{4} \sqrt{1-x^2} \right]_0^1 && \mathbf{A1A1}
 \end{aligned}$$

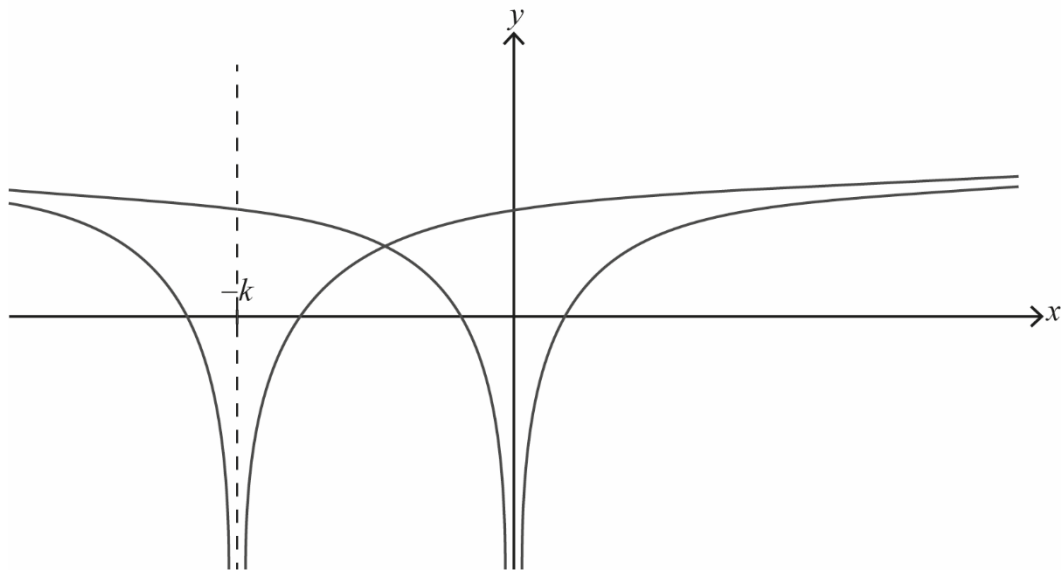
Note: Award A1 for first term, A1 for next 3 terms.
--

$$\begin{aligned}
 &= k \left[\left(\frac{\pi}{2} - \frac{\pi}{4} + \frac{\pi}{8} \right) - (0) \right] && \mathbf{A1} \\
 &= \left(\frac{2}{2+\pi} \right) \frac{3\pi}{8} && \mathbf{A1} \\
 &= \frac{3\pi}{4(\pi+2)} && \mathbf{AG}
 \end{aligned}$$

[9 marks]**Total [16 marks]**11. (a) translation k units to the left (or equivalent)**A1****[1 mark]**(b) range is $(g(x) \in) \mathbb{R}$ **A1****[1 mark]***continued...*

Question 11 continued

(c)

correct shape of $y = f(x)$ **A1**their $f(x)$ translated k units to left (possibly shown by $x = -k$ marked on x -axis)**A1**asymptote included and marked as $x = -k$ **A1** $f(x)$ intersects x -axis at $x = -1$, $x = 1$ **A1** $g(x)$ intersects x -axis at $x = -k - 1$, $x = -k + 1$ **A1** $g(x)$ intersects y -axis at $y = \ln k$ **A1****Note:** Do not penalise candidates if their graphs "cross" as $x \rightarrow \pm\infty$.**Note:** Do not award **FT** marks from the candidate's part (a) to part (c).**[6 marks]**(d) at P $\ln(x+k) = \ln(-x)$ attempt to solve $x+k = -x$ (or equivalent)**(M1)**

$$x = -\frac{k}{2} \Rightarrow y = \ln\left(\frac{k}{2}\right) \text{ (or } y = \ln\left|\frac{k}{2}\right|)$$

A1

$$P\left(-\frac{k}{2}, \ln\frac{k}{2}\right) \text{ (or } P\left(-\frac{k}{2}, \ln\left|\frac{k}{2}\right|\right)$$

[2 marks]

continued...

Question 11 continued

(e) attempt to differentiate $\ln(-x)$ or $\ln|x|$ (M1)

$$\frac{dy}{dx} = \frac{1}{x} \quad \text{A1}$$

at P, $\frac{dy}{dx} = \frac{-2}{k}$ A1

recognition that tangent passes through origin $\Rightarrow \frac{y}{x} = \frac{dy}{dx}$ (M1)

$$\frac{\ln\left(\frac{k}{2}\right)}{-\frac{k}{2}} = \frac{-2}{k} \quad \text{A1}$$

$$\ln\left(\frac{k}{2}\right) = 1 \quad \text{(A1)}$$

$$\Rightarrow k = 2e \quad \text{A1}$$

[7 marks]

Note: For candidates who explicitly differentiate $\ln(x)$ (rather than $\ln(-x)$ or $\ln|x|$), award **M0A0A1M1A1A1A1**.

Total [17 marks]
