

OCR

Oxford Cambridge and RSA

Level 3 Cambridge Technical in Health and Social Care**05831/05832/05833/05871****Unit 4: Anatomy and physiology for health and social care****Wednesday 6 June 2018 – Morning****Duration: 2 hours****C442/1806****You must have:**

- no materials required

First Name						Last Name				
Centre Number						Candidate Number				
Date of Birth	D	D	M	M	Y	Y	Y	Y		

INSTRUCTIONS

- Use black ink.
- Complete the boxes above with your name, centre number, candidate number and date of birth.
- Answer **all** the questions.
- Write your answer to each question in the space provided.
- If additional answer space is required, you should use the lined page(s) at the end of this booklet. The question number(s) must be clearly shown.

INFORMATION

- The total mark for this paper is **100**.
- The marks for each question are shown in brackets [].
- Quality of extended response will be assessed in questions marked with an asterisk (*).
- This document consists of **16** pages.

FOR EXAMINER USE ONLY	
Question No	Mark
1	/22
2	/23
3	/17
4	/21
5	/17
Total	/100

Answer **all** the questions.

- 1 (a) Identify which part of the body has the type of joint in the table below.

Choose from the following:

Knee Cranium Wrist Hip Neck

Type of joint	Part of the body
Fixed joint	
Pivot joint	
Sliding joint	
Ball and socket joint	
Hinge joint	

[5]

- (b) Many people have arthritis that affects their joints.

Explain **two** different possible causes of arthritis.

1.....

.....

.....

.....

2.....

.....

.....

.....

[4]

.....

.....

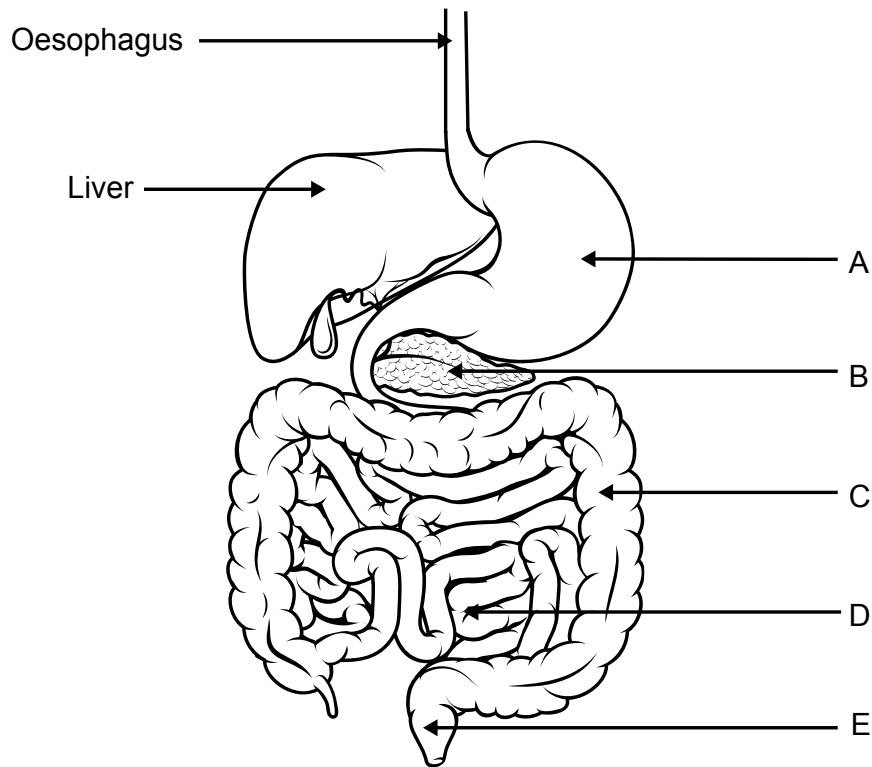
.....

.....

.....

Question 2(a) begins on page 5

2 The diagram below shows the digestive system.



(a) Identify the labelled parts shown on the diagram.

Choose from the words given below:

- Anus** **Gall bladder** **Large intestine** **Pancreas**
Rectum **Small intestine** **Stomach**

Labelled part	Name of labelled part
A	
B	
C	
D	
E	

[5]

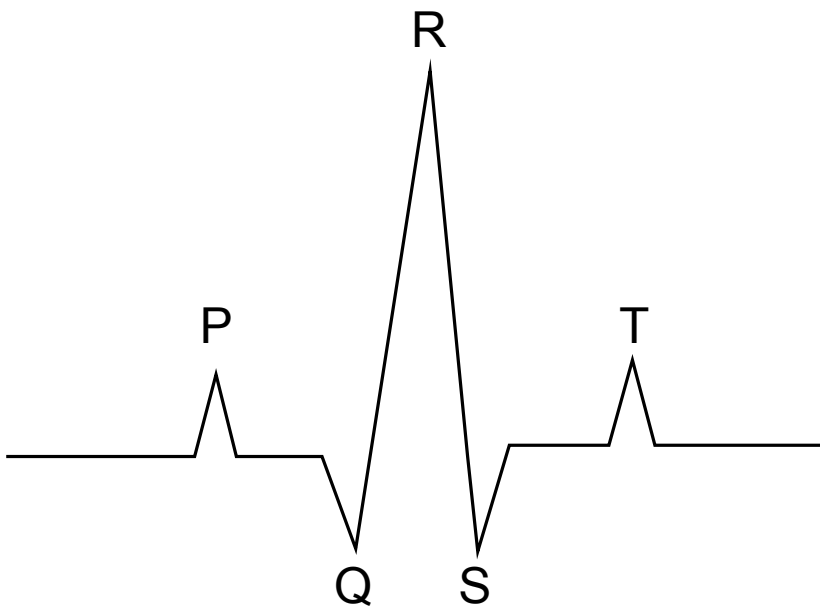
4 (a) Explain **two** reasons why the heart is referred to as a **double pump**.

1.....
.....
.....
.....

2.....
.....
.....

[4]

(b) The diagram below shows an electrocardiogram (ECG) trace.



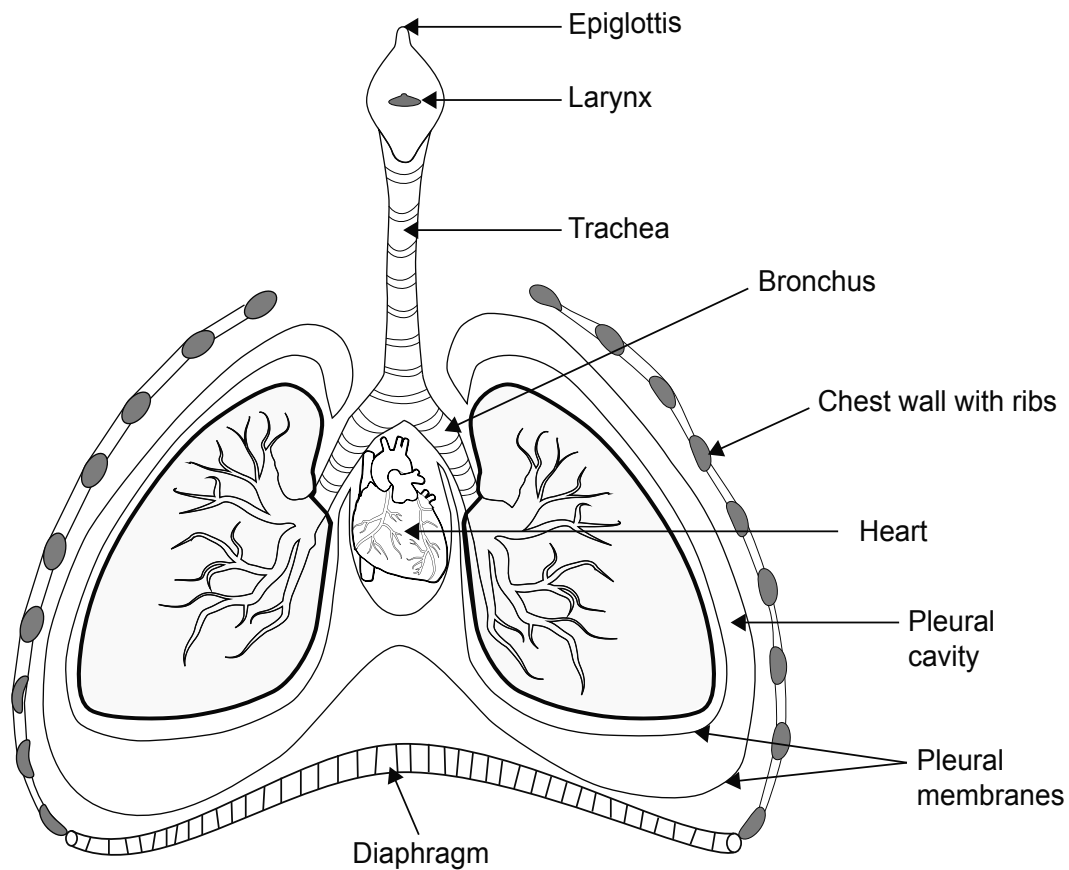
An ECG is a commonly used technique for diagnosing problems with heart function.

Explain what an ECG trace can tell us about what is happening in the heart.

.....
.....
.....
.....
.....
.....
.....
.....
.....
.....

[4]

5 The diagram below shows the human respiratory system:



(a) Identify which parts of the respiratory system in the diagram above carry out the following functions.

Function	Part of the Respiratory system
Covers the airway during swallowing to prevent food entering the lungs	
Produces sound and speech	
Contains cartilage to keep the airway open even when lying down	

[3]

ADDITIONAL ANSWER SPACE

If additional answer space is required, you should use the following lined page(s). The question number(s) must be clearly shown – for example 1(a) or 3(a).

A large rectangular area containing 25 horizontal dotted lines for writing answers. A solid vertical line is on the left side of the area.

OCR

Oxford Cambridge and RSA

Copyright Information:

OCR is committed to seeking permission to reproduce all third-party content that it uses in its assessment materials. OCR has attempted to identify and contact all copyright holders whose work is used in this paper. To avoid the issue of disclosure of answer-related information to candidates, all copyright acknowledgements are reproduced in the OCR Copyright Acknowledgements Booklet. This is produced for each series of examinations and is freely available to download from our public website (www.ocr.org.uk) after the live examination series.

If OCR has unwittingly failed to correctly acknowledge or clear any third-party content in this assessment material OCR will be happy to correct its mistake at the earliest possible opportunity.

For queries or further information please contact the Copyright Team, First Floor, 9 Hills Road, Cambridge CB2 1GE.

OCR is part of the Cambridge Assessment Group. Cambridge Assessment is the brand name of University of Cambridge Local Examinations Syndicate (UCLES), which is itself a department of the University of Cambridge.