

**OXFORD CAMBRIDGE AND RSA EXAMINATIONS**  
**GCSE**

**A914/02**

**HEALTH AND SOCIAL CARE**  
**Safeguarding and Protecting**  
**Individuals**

**TUESDAY 24 JUNE 2014: Morning**

**DURATION: 1 hour**  
**plus your additional time allowance**

**MODIFIED ENLARGED**

<b>Candidate forename</b>		<b>Candidate surname</b>	
-------------------------------	--	------------------------------	--

<b>Centre number</b>						<b>Candidate number</b>				
--------------------------	--	--	--	--	--	-----------------------------	--	--	--	--

**Candidates answer on the Question Paper.**

**OCR SUPPLIED MATERIALS:**

**None**

**OTHER MATERIALS REQUIRED:**

**None**

**READ INSTRUCTIONS OVERLEAF**

## **INSTRUCTIONS TO CANDIDATES**

**Write your name, centre number and candidate number in the boxes on the first page. Please write clearly and in capital letters.**

**Use black ink. Pencil may be used for graphs and diagrams only.**

**Read each question carefully. Make sure you know what you have to do before starting your answer.**

**Write your answer to each question in the space provided. If additional space is required, you should use the lined pages at the end of this booklet. The question number(s) must be clearly shown.**

**Answer ALL the questions.**

## **INFORMATION FOR CANDIDATES**

**The number of marks is given in brackets [ ] at the end of each question or part question.**

**Quality of Written Communication will be assessed in questions marked with an asterisk (\*).**

**The total number of marks for this paper is 60.**

**Any blank pages are indicated.**

**Answer ALL the questions.**

- 1 Identify THREE key signs of a person having an asthma attack.**

**1** \_\_\_\_\_

**2** \_\_\_\_\_

**3** \_\_\_\_\_

**[3]**

- 2 'ABC' is a basic procedure of first aid.**

**What is meant by the initials 'ABC'?**

**A** \_\_\_\_\_

**B** \_\_\_\_\_

**C** \_\_\_\_\_

**[3]**

**Explain how the first aider would prioritise and treat the casualties.**

[illegible]

**4 Identify THREE items that should be in a first aid box.**

**1** \_\_\_\_\_

**2** \_\_\_\_\_

**3** \_\_\_\_\_

**[3]**

**5 Describe what is meant by the following terms.**

**Disinfecting** \_\_\_\_\_

\_\_\_\_\_

\_\_\_\_\_

\_\_\_\_\_

**Sterilising** \_\_\_\_\_

\_\_\_\_\_

\_\_\_\_\_

\_\_\_\_\_ **[4]**

**6 Identify FOUR ways of general cleaning a community lounge in a care setting.**

1 \_\_\_\_\_

2 \_\_\_\_\_

3 \_\_\_\_\_

4 \_\_\_\_\_

**[4]**

**7 Give FOUR good food hygiene practices in food preparation areas.**

1 \_\_\_\_\_

2 \_\_\_\_\_

3 \_\_\_\_\_

4 \_\_\_\_\_

**[4]**

**8 State ONE piece of legislation that aims to prevent the spread of infection.**

\_\_\_\_\_ **[1]**



**11\*Zola has a mental health condition. Her neighbours often laugh at her about her mental health condition.**

**Explain the possible effects on Zola of this treatment.**

[illegible]



**12\* Explain how safety features could help reduce the risks in a bathroom in a care setting.**

---

---

---

---

---

---

---

---

---

---

---

**[6]**

**13 State FOUR reasons for conducting a risk assessment.**

**1** 

---

**2** 

---

**3** 

---

**4** 

---

**[4]**

PLAN OF DAY NURSERY

KEY

RC Resource Cupboard

FE Fire Exit

ES Electric Sockets

FB Fire Blanket

HD Hot Drinks Machine

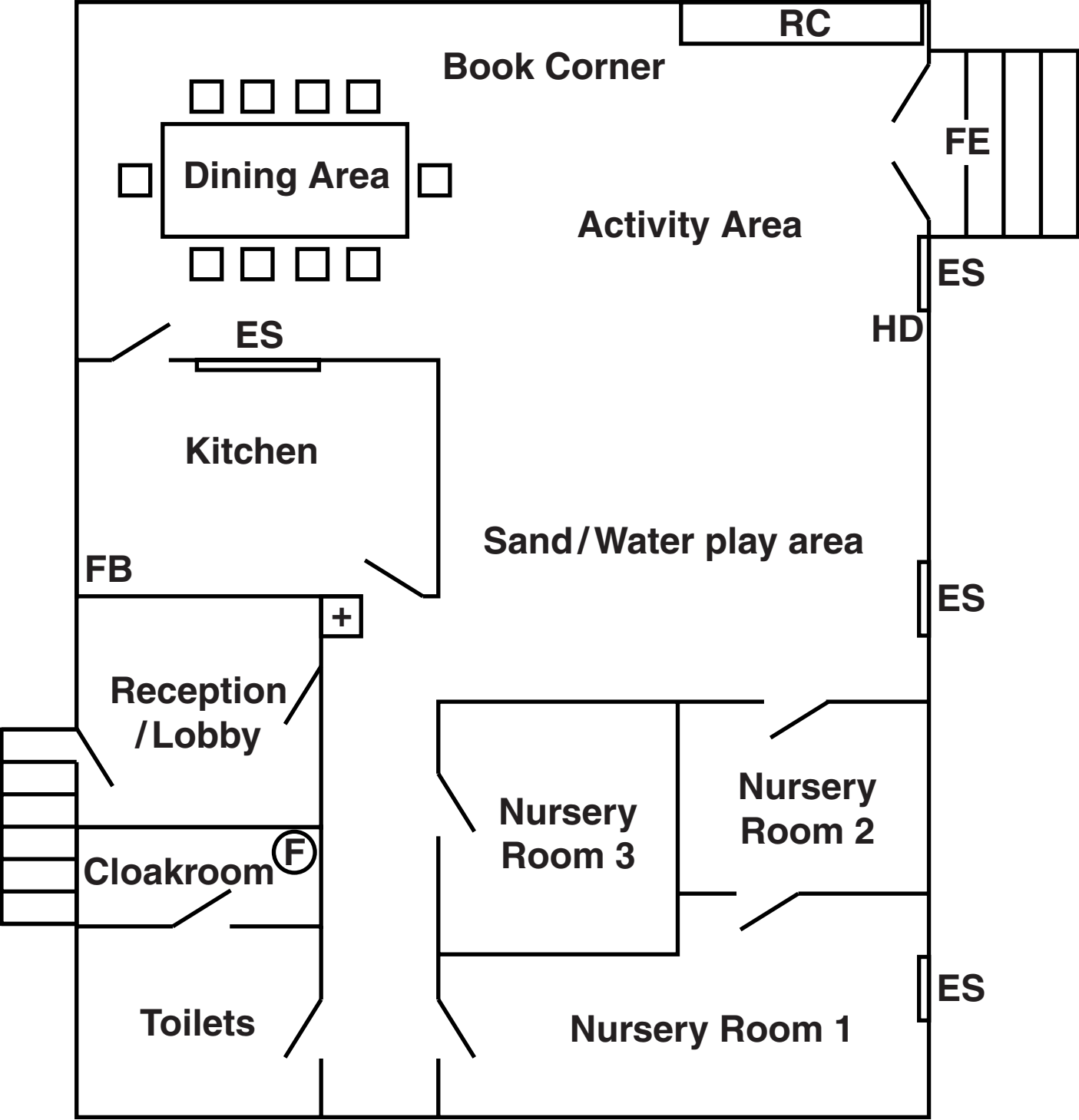
Door

Steps

Fire Extinguisher

First Aid Box

Chairs





---

---

---

---

---

---

---

---

---

**END OF QUESTION PAPER**

## ADDITIONAL ANSWER SPACE

If additional answer space is required, you should use the following lined page(s). The question number(s) must be clearly shown.










[illegible]



**BLANK PAGE**



### Copyright Information

OCR is committed to seeking permission to reproduce all third-party content that it uses in its assessment materials. OCR has attempted to identify and contact all copyright holders whose work is used in this paper. To avoid the issue of disclosure of answer-related information to candidates, all copyright acknowledgements are reproduced in the OCR Copyright Acknowledgements Booklet. This is produced for each series of examinations and is freely available to download from our public website ([www.ocr.org.uk](http://www.ocr.org.uk)) after the live examination series.

If OCR has unwittingly failed to correctly acknowledge or clear any third-party content in this assessment material, OCR will be happy to correct its mistake at the earliest possible opportunity.

For queries or further information please contact the Copyright Team, First Floor, 9 Hills Road, Cambridge CB2 1GE.

OCR is part of the Cambridge Assessment Group; Cambridge Assessment is the brand name of University of Cambridge Local Examinations Syndicate (UCLES), which is itself a department of the University of Cambridge.

