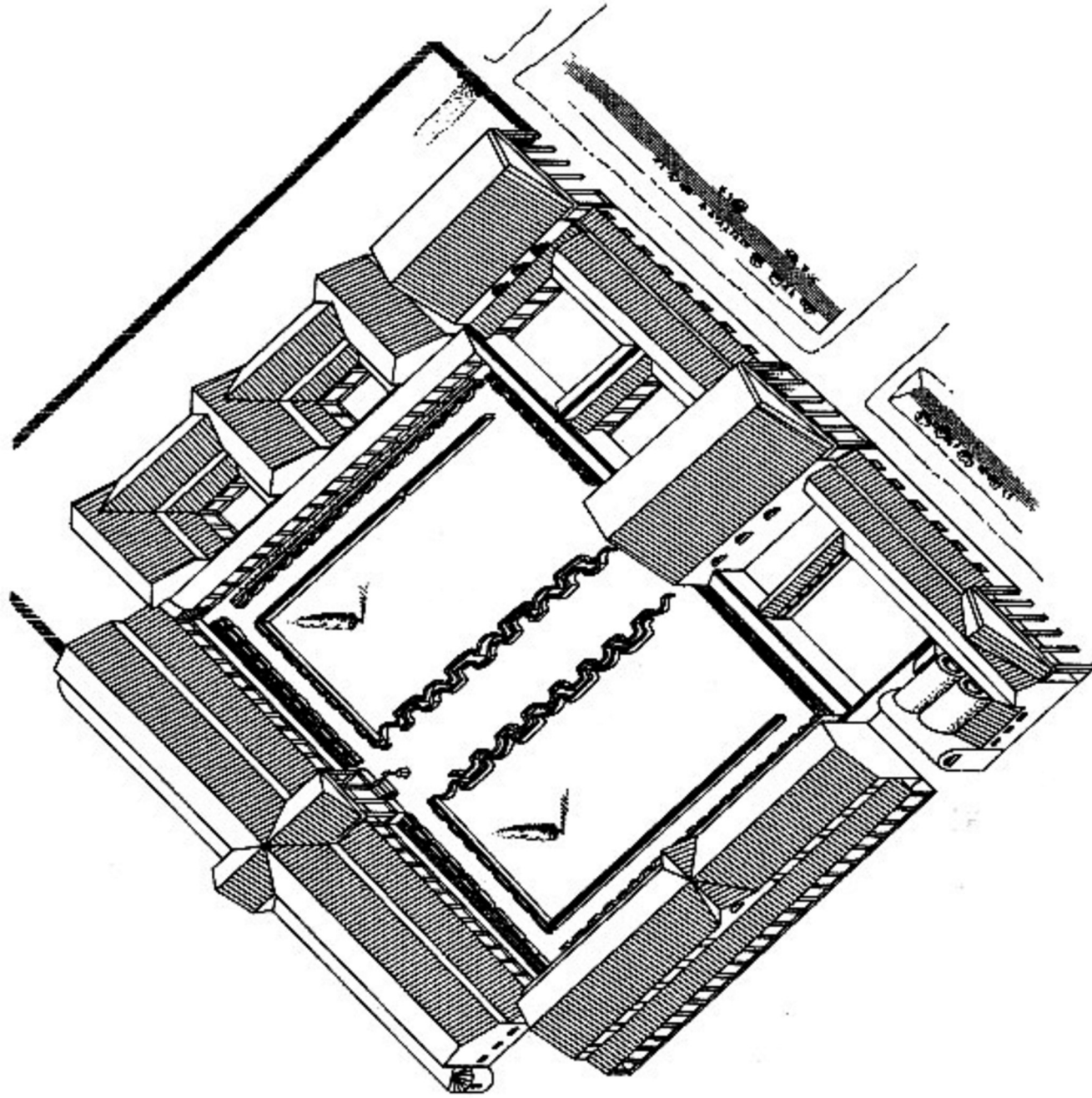
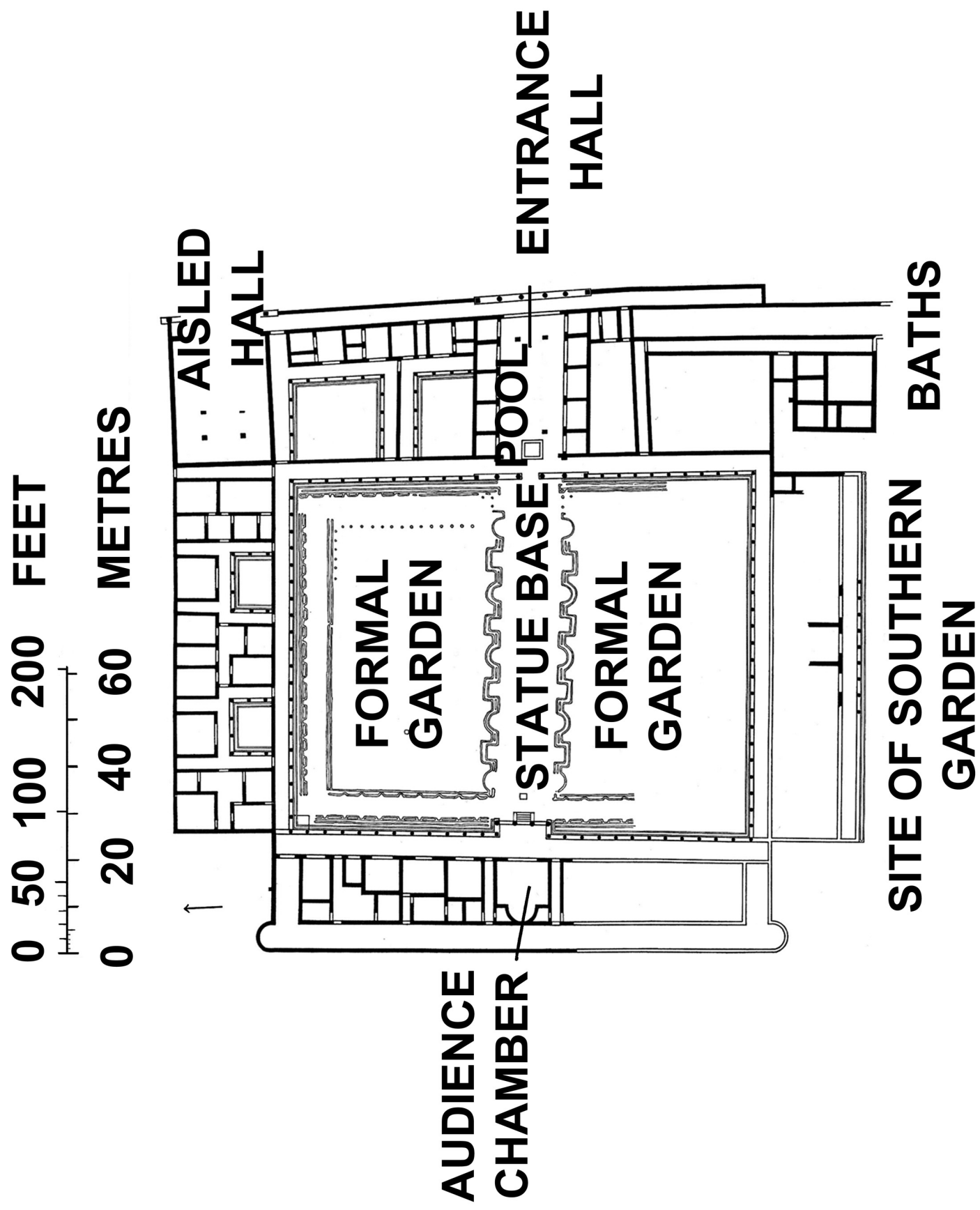


OXFORD CAMBRIDGE AND RSA EXAMINATIONS
A2 GCE
F387/01
CLASSICS: CLASSICAL CIVILISATION
Roman Britain: life in the
outpost of the Empire
SOURCE BOOKLET for Question 1
FRIDAY 20 JUNE 2014: Morning
DURATION: 2 hours
plus your additional time allowance
MODIFIED ENLARGED 24pt

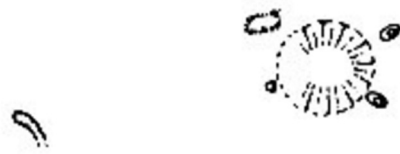
**Fishbourne Roman Palace: isometric drawing (below),
plan of the Flavian palace (opposite)**



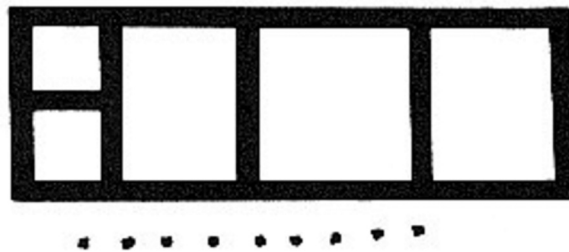


Lockleys Roman Villa, showing stages of development

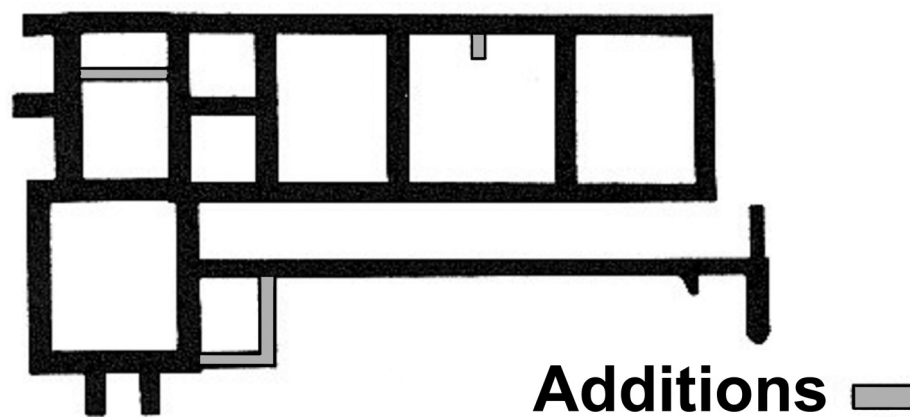
a) Belgic hut and gully early 1st century



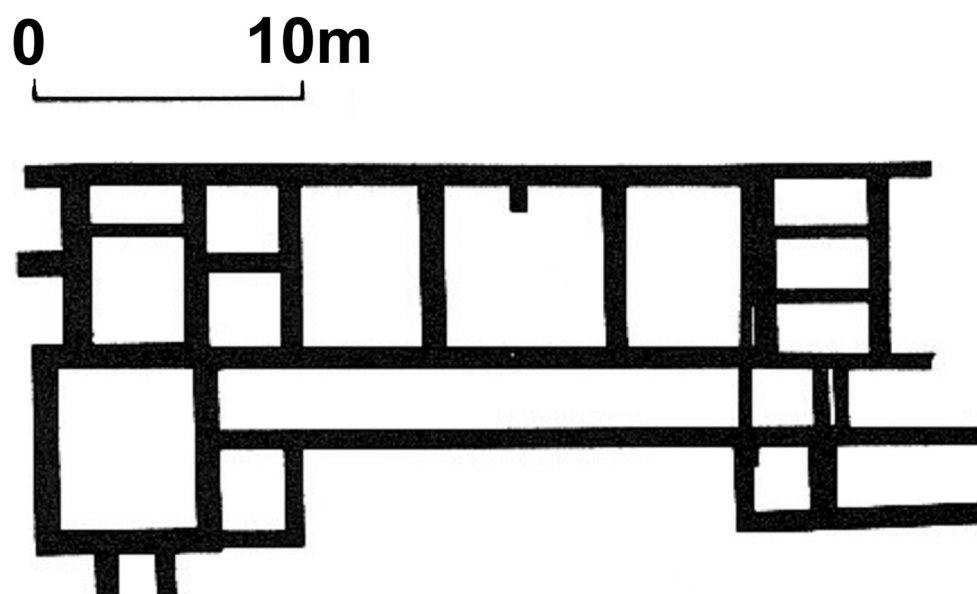
b) First Roman building c. 65 AD



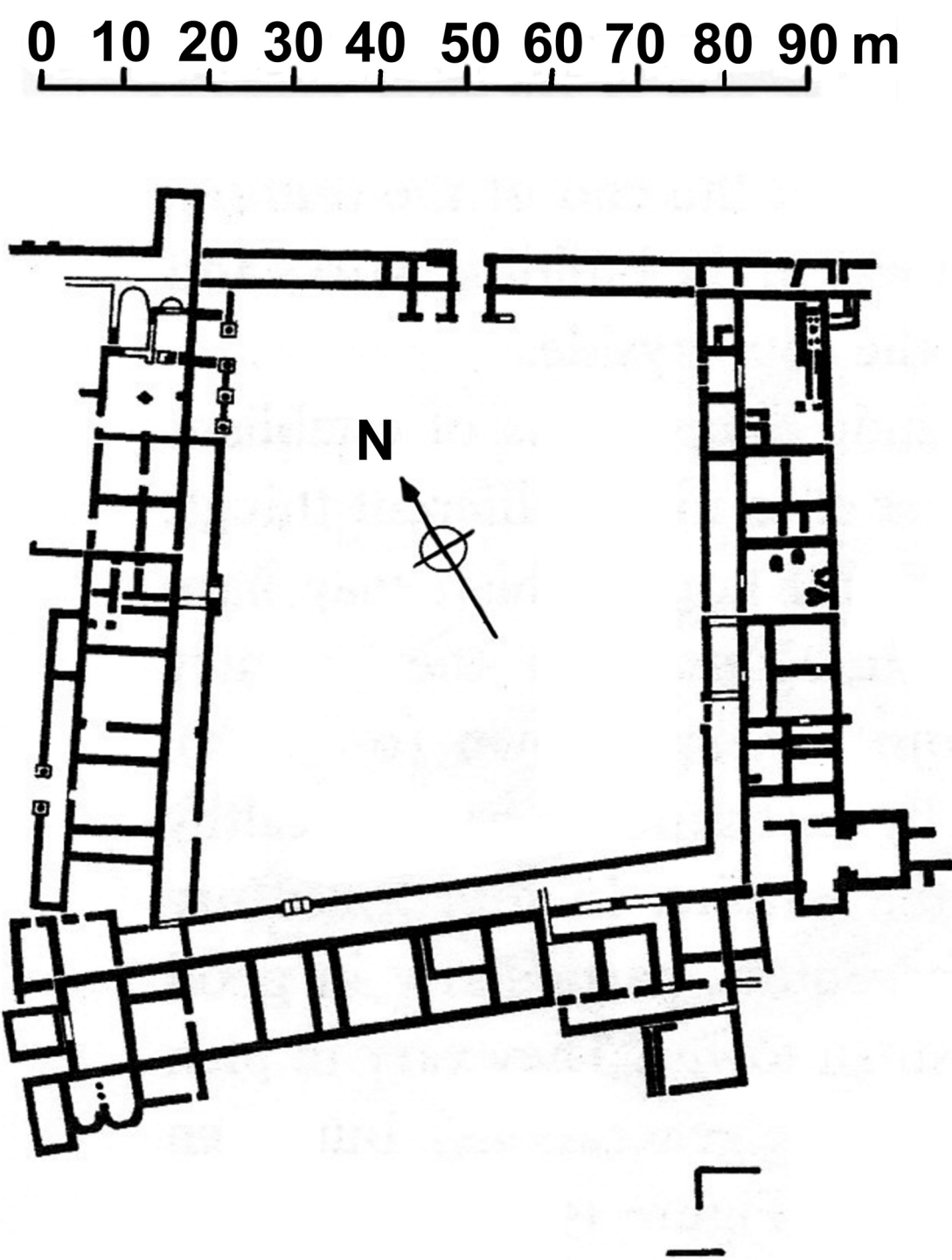
c) Second Roman building c. 150 AD



d) Third Roman building c. 335 AD



The villa at North Leigh



BLANK PAGE

BLANK PAGE



Copyright Information

OCR is committed to seeking permission to reproduce all third-party content that it uses in its assessment materials. OCR has attempted to identify and contact all copyright holders whose work is used in this paper. To avoid the issue of disclosure of answer-related information to candidates, all copyright acknowledgements are reproduced in the OCR Copyright Acknowledgements Booklet. This is produced for each series of examinations and is freely available to download from our public website (www.ocr.org.uk) after the live examination series.

If OCR has unwittingly failed to correctly acknowledge or clear any third-party content in this assessment material, OCR will be happy to correct its mistake at the earliest possible opportunity.

For queries or further information please contact the Copyright Team, First Floor, 9 Hills Road, Cambridge CB2 1GE.

OCR is part of the Cambridge Assessment Group; Cambridge Assessment is the brand name of University of Cambridge Local Examinations Syndicate (UCLES), which is itself a department of the University of Cambridge.

