

**OXFORD CAMBRIDGE AND RSA EXAMINATIONS
AS GCE**

F731/01/I

GENERAL STUDIES

The Cultural and Social Domains

INSERT

THURSDAY 14 MAY 2015: Afternoon

DURATION: 2 hours

plus your additional time allowance

MODIFIED ENLARGED

INFORMATION FOR CANDIDATES

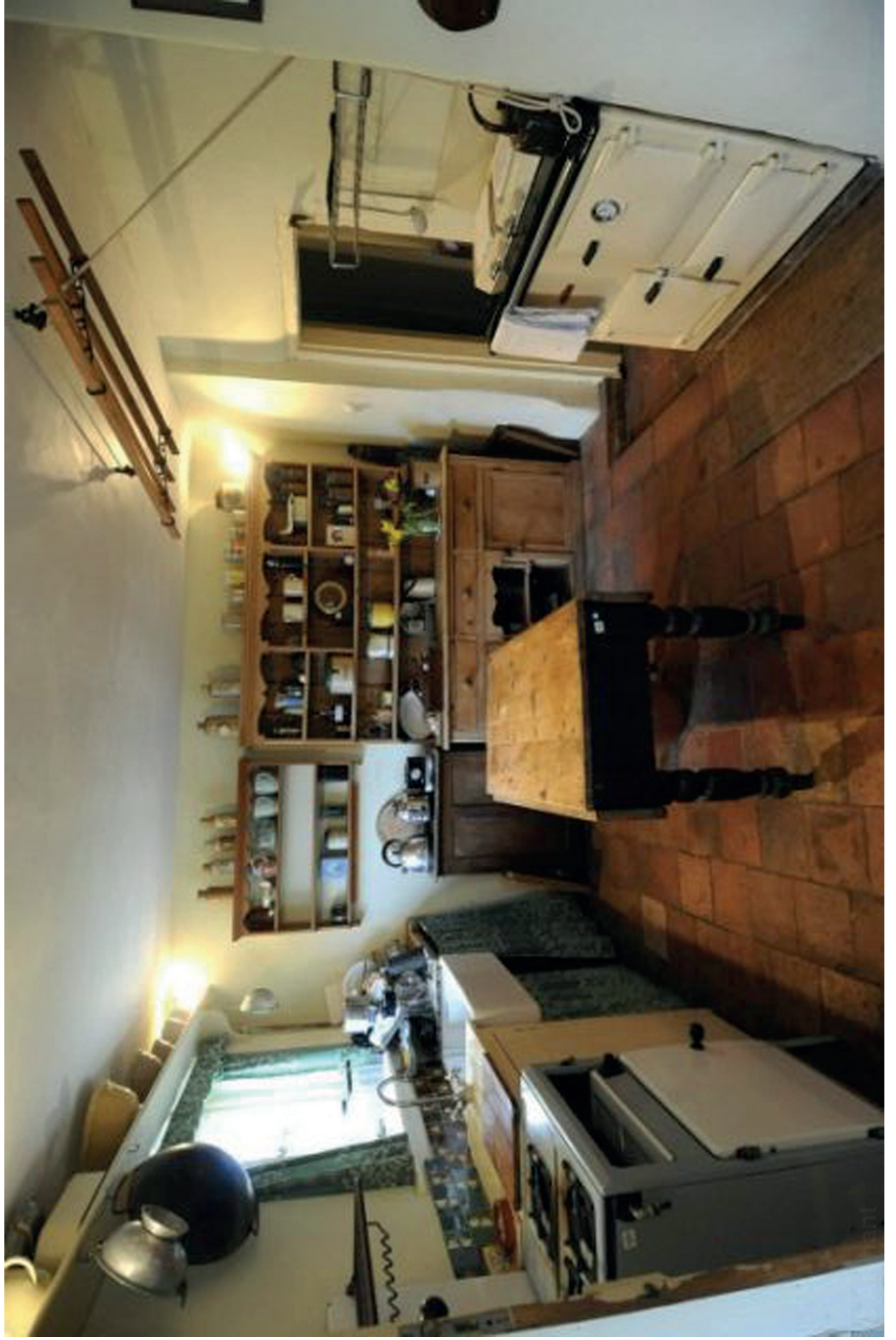
Any blank pages are indicated.

INSTRUCTION TO EXAMS OFFICER/INVIGILATOR

Do not send this Insert for marking; it should be retained in the centre or recycled.

Please contact OCR Copyright should you wish to re-use this document.

SOURCE A
1940

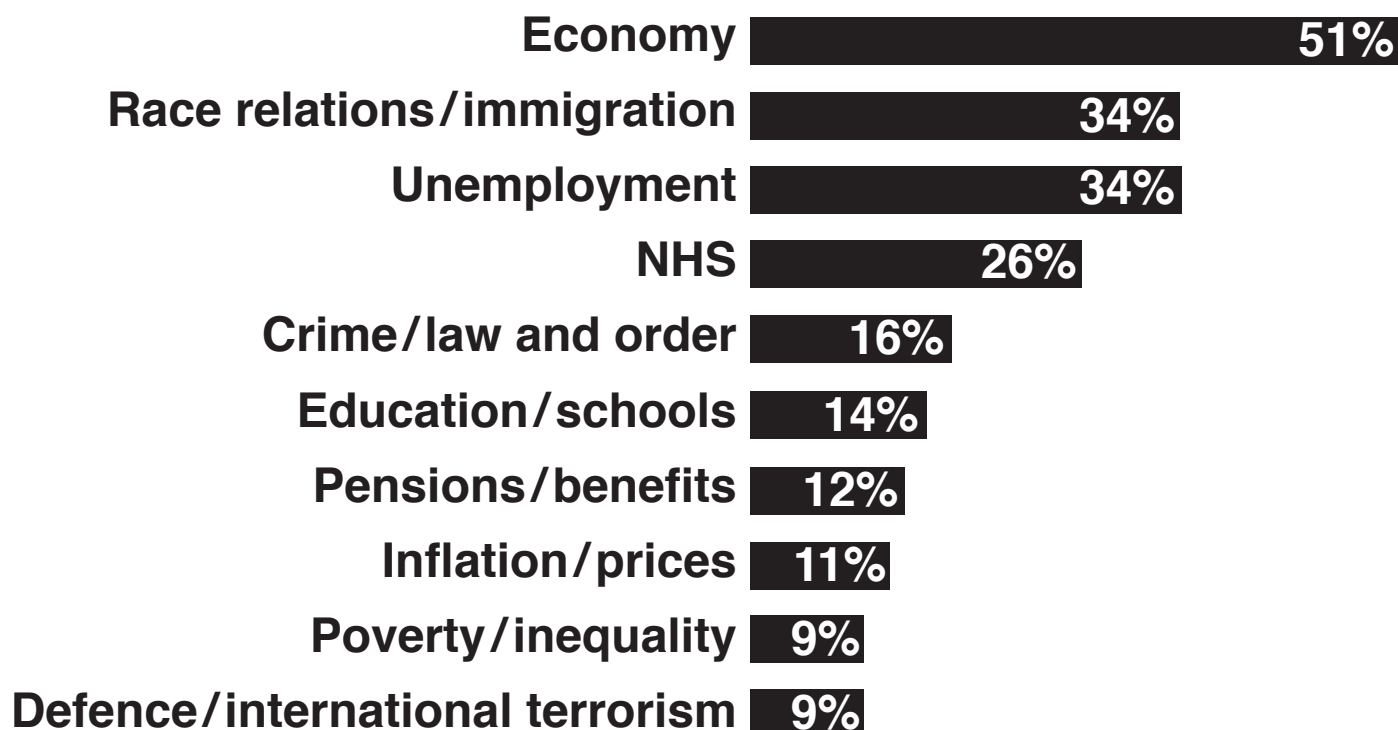


SOURCE B
2015



SOURCE C

What do you see as the most important issues facing Britain today?



SOURCE D

Voting at elections in the UK is not compulsory. In recent years there has been a sharp decline in voter turnout at local or general elections, with many now claiming no interest in either local or national politics. When politicians win elections on a high turnout, they can undoubtedly claim a higher degree of political legitimacy and a stronger mandate. Australia has had a system of compulsory voting since the 1925 federal election. People must either vote for a candidate, or, if they do not wish to support any of the candidates available, they may 'spoil' the ballot paper. Either way, some form of action is required on the part of the citizen, reflecting the notion of voting as a 'civic duty'.

BLANK PAGE

BLANK PAGE

Copyright Information

OCR is committed to seeking permission to reproduce all third-party content that it uses in its assessment materials. OCR has attempted to identify and contact all copyright holders whose work is used in this paper. To avoid the issue of disclosure of answer-related information to candidates, all copyright acknowledgements are reproduced in the OCR Copyright Acknowledgements Booklet. This is produced for each series of examinations and is freely available to download from our public website (www.ocr.org.uk) after the live examination series.

If OCR has unwittingly failed to correctly acknowledge or clear any third-party content in this assessment material, OCR will be happy to correct its mistake at the earliest possible opportunity.

For queries or further information please contact the Copyright Team, First Floor, 9 Hills Road, Cambridge CB2 1GE.

OCR is part of the Cambridge Assessment Group; Cambridge Assessment is the brand name of University of Cambridge Local Examinations Syndicate (UCLES), which is itself a department of the University of Cambridge.

