



Oxford Cambridge and RSA

**Thursday 13 June 2019 – Afternoon**

**A Level Geography**

**H481/03** Geographical debates

Resource Booklet

**Time allowed: 2 hours 30 minutes**



**INFORMATION FOR CANDIDATES**

- The questions tell you which resources you need to use.
- This document consists of **8** pages.

**CONTENTS OF RESOURCE BOOKLET**

- Fig. 1 – Geological periods and ice ages
- Fig. 2 – Warning against an infectious disease outside an African village
- Fig. 3 – Radioactivity in the Northern Baltic Sea
- Fig. 4 – Food security in Somalia
- Fig. 5 – Earthquakes occurring in Iran

**INSTRUCTIONS TO EXAMS OFFICER/INVIGILATOR**

- Do not send this Resource Booklet for marking, it should be retained in the centre or recycled. Please contact OCR copyright should you wish to re-use this document.

**Fig. 1 – Geological periods and ice ages**

Period	Ice Age
Precambrian	Huronian
	Cryogenian
Cambrian	
Ordovician	Andrea-Saharan
Silurian	
Devonian	
Mississippian	Karoo
Pennsylvanian	
Carboniferous	
Permian	
Triassic	
Jurassic	
Cretaceous	
Tertiary	
Quaternary	Quaternary glaciation

**Fig. 2 – Warning against an infectious disease outside an African village**

Fig. 3 – Radioactivity in the Northern Baltic Sea

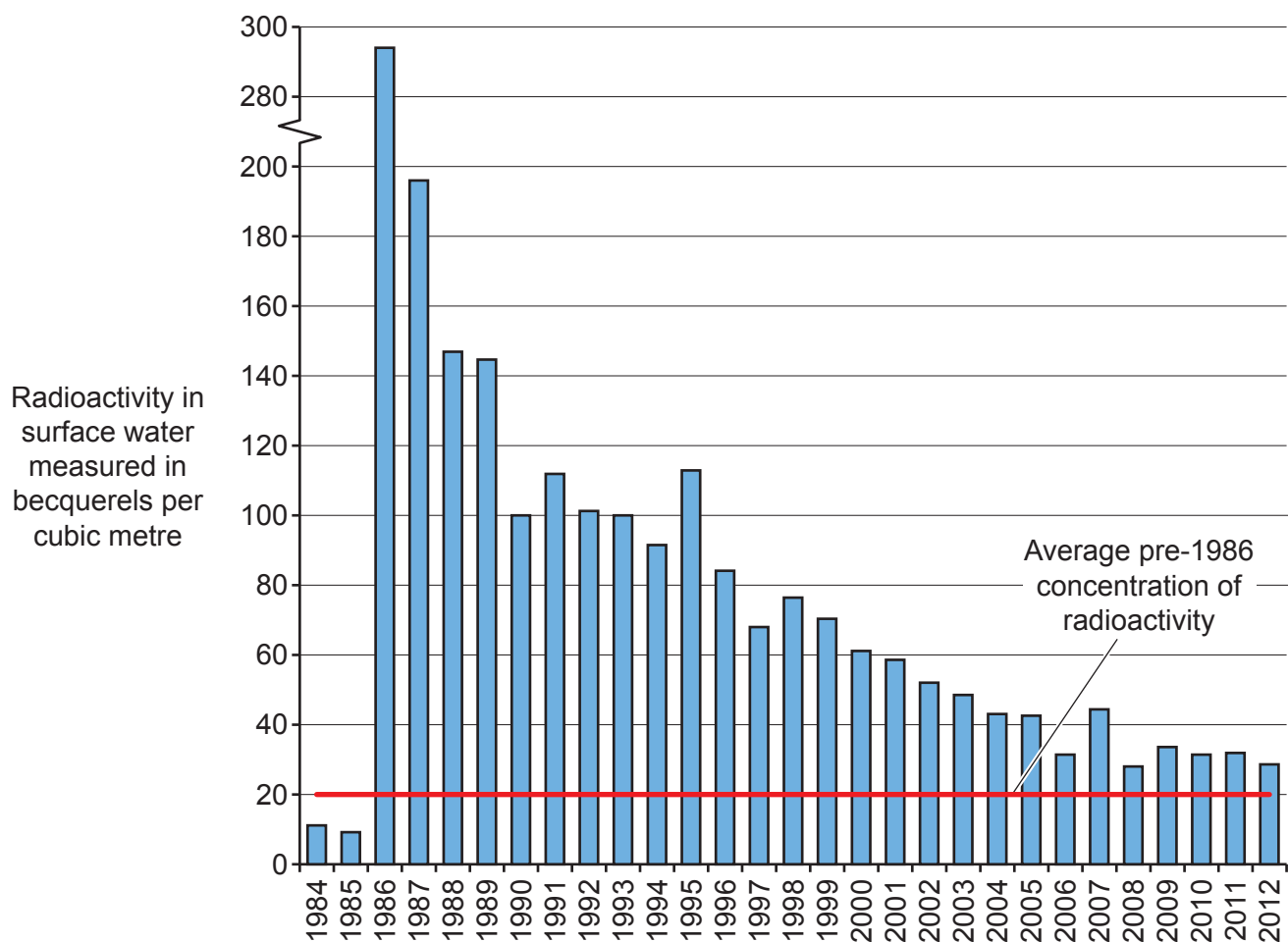
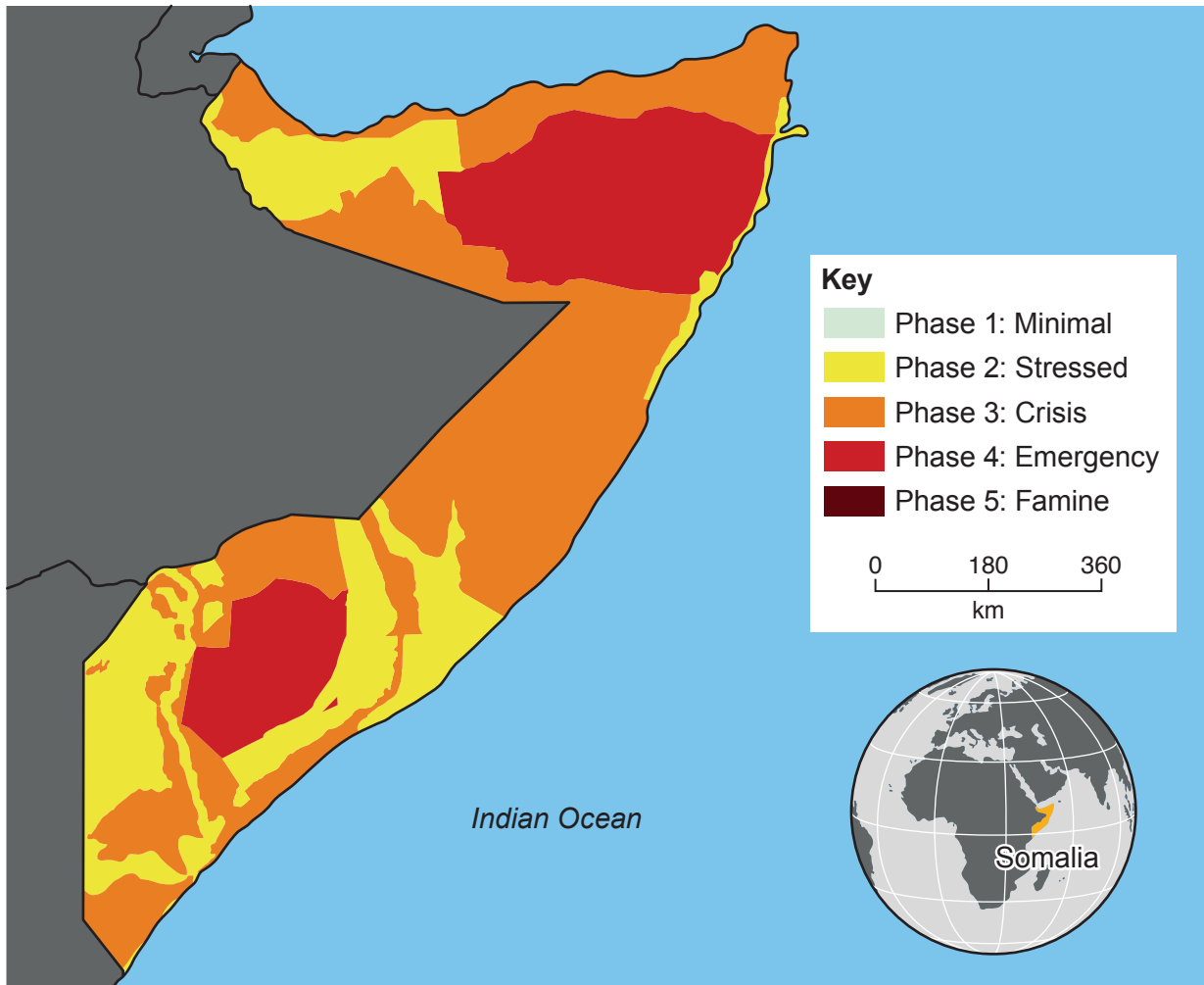
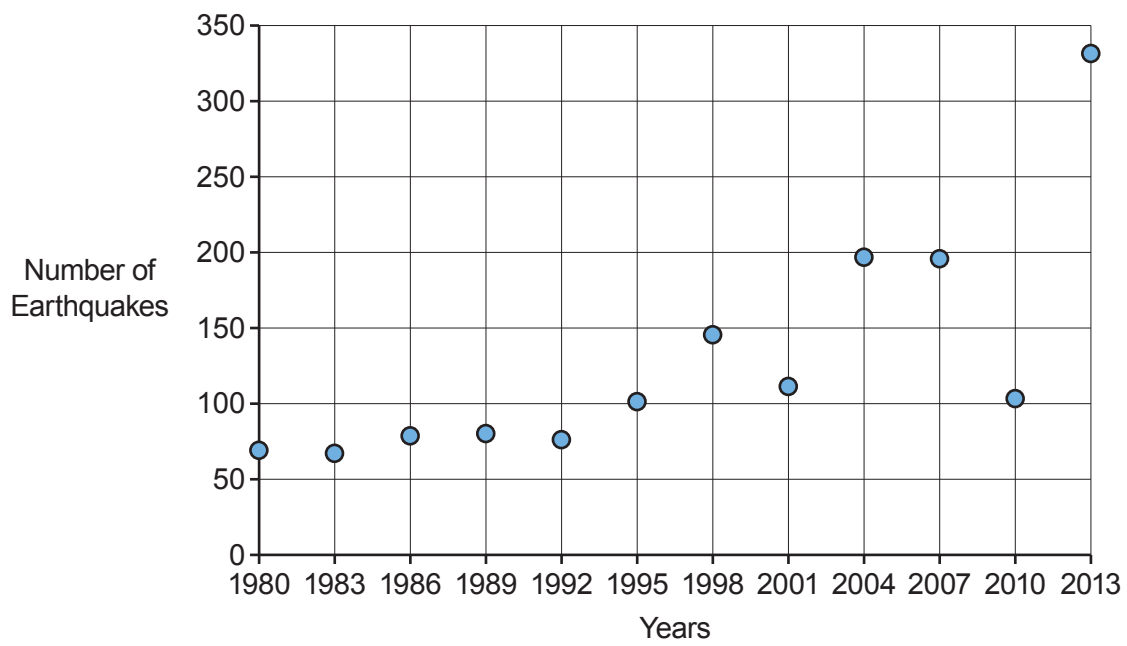


Fig. 4 – Food security in Somalia



**Fig. 5 – Earthquakes occurring in Iran**

**BLANK PAGE**

**BLANK PAGE**



Oxford Cambridge and RSA

**Copyright Information**

OCR is committed to seeking permission to reproduce all third-party content that it uses in its assessment materials. OCR has attempted to identify and contact all copyright holders whose work is used in this paper. To avoid the issue of disclosure of answer-related information to candidates, all copyright acknowledgements are reproduced in the OCR Copyright Acknowledgements Booklet. This is produced for each series of examinations and is freely available to download from our public website ([www.ocr.org.uk](http://www.ocr.org.uk)) after the live examination series.

If OCR has unwittingly failed to correctly acknowledge or clear any third-party content in this assessment material, OCR will be happy to correct its mistake at the earliest possible opportunity.

For queries or further information please contact The OCR Copyright Team, The Triangle Building, Shaftesbury Road, Cambridge CB2 8EA.

OCR is part of the Cambridge Assessment Group; Cambridge Assessment is the brand name of University of Cambridge Local Examinations Syndicate (UCLES), which is itself a department of the University of Cambridge.