



Oxford Cambridge and RSA

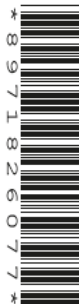
**Tuesday 19 October 2021 – Morning**

**A Level Geography**

**H481/03** Geographical debates

Resource Booklet

**Time allowed: 2 hours 30 minutes**



**INSTRUCTIONS**

- Use the Resource Booklet to answer the questions in Section A.
- Do **not** send this Resource Booklet for marking. Keep it in the centre or recycle it.

**INFORMATION**

- This document has **4** pages.

Fig. 1 The greenhouse effect

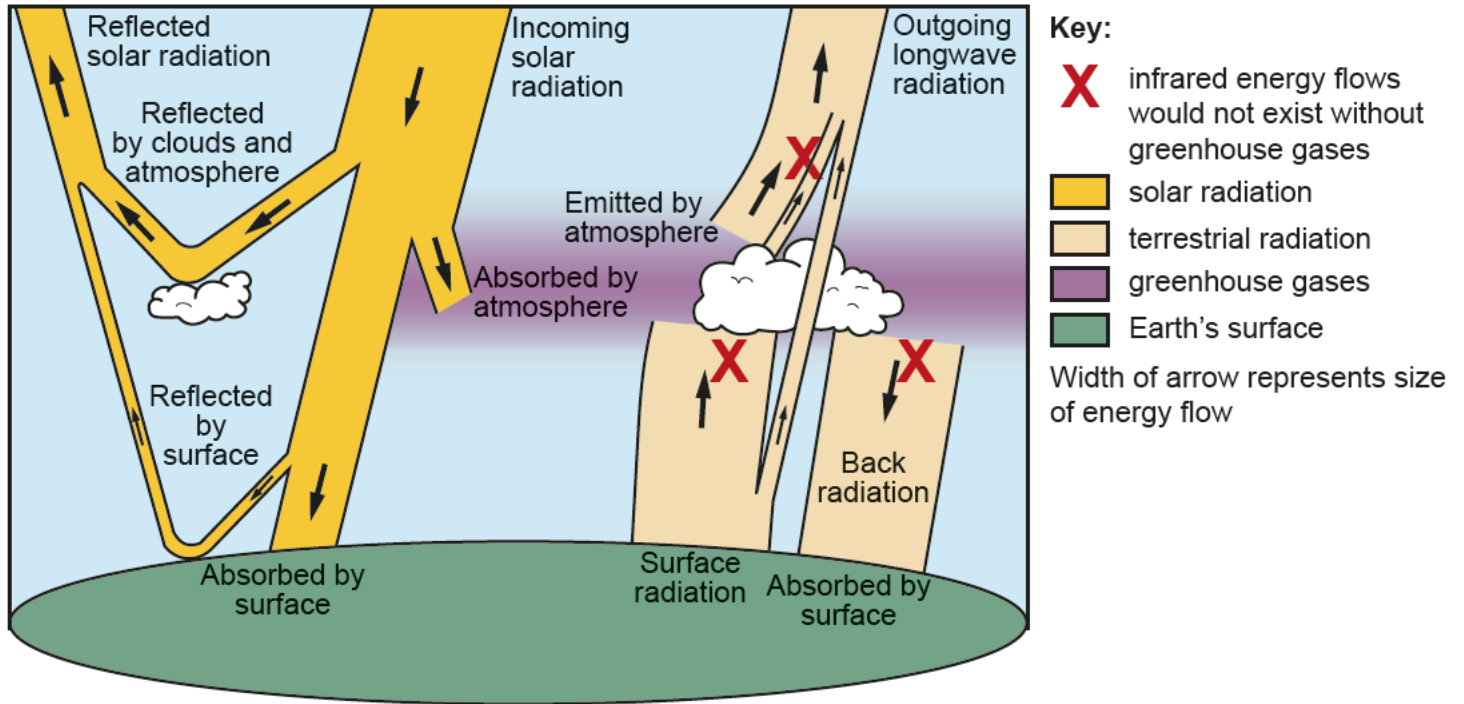


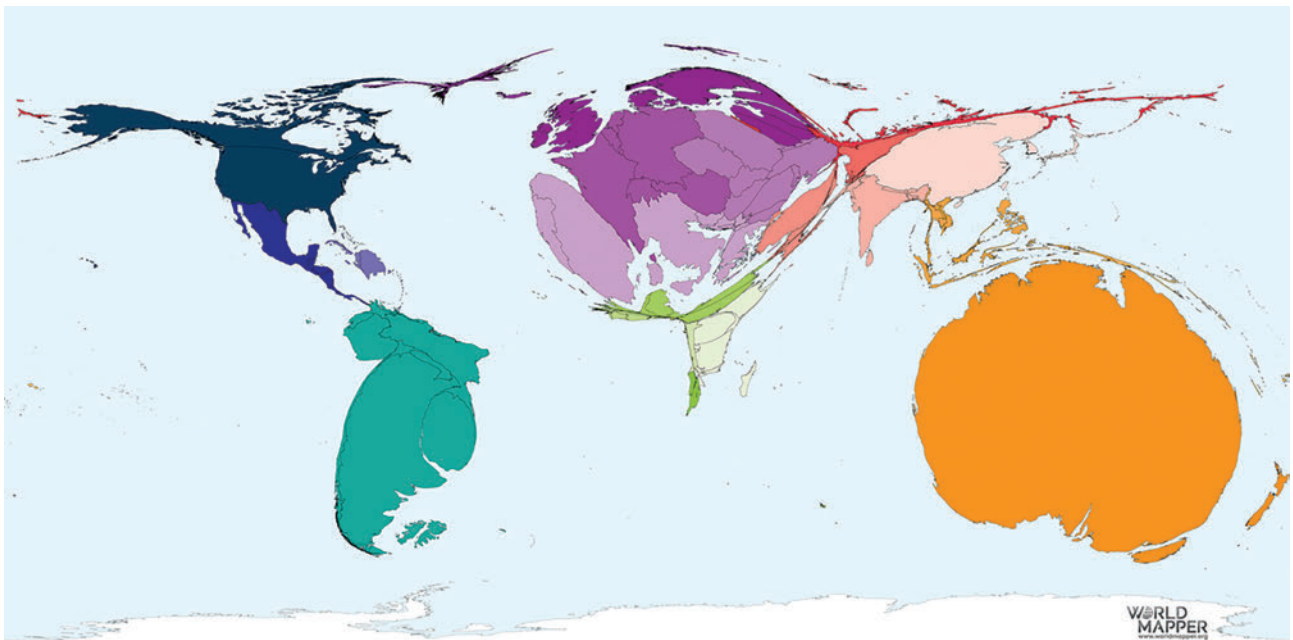
Fig. 2 Global distribution of people living with dementia in 2015



**Fig. 3 The pattern of circulation in the North Atlantic**

Item removed due to third party copyright restrictions. Link to material: <https://www.weatheronline.co.uk/reports/wxfacts/North-Atlantic-Drift-Gulf-Stream.htm>

**Fig. 4 Global distribution of organic agriculture in 2015**



The size of the country represents the proportion of all organic agricultural hectares in the world that are farmed in that country.

Colours are used to distinguish between different countries.

Fig. 5 Part of a rift valley in Iceland



**OCR**  
Oxford Cambridge and RSA

#### Copyright Information

OCR is committed to seeking permission to reproduce all third-party content that it uses in its assessment materials. OCR has attempted to identify and contact all copyright holders whose work is used in this paper. To avoid the issue of disclosure of answer-related information to candidates, all copyright acknowledgements are reproduced in the OCR Copyright Acknowledgements Booklet. This is produced for each series of examinations and is freely available to download from our public website ([www.ocr.org.uk](http://www.ocr.org.uk)) after the live examination series.

OCR has unwittingly failed to correctly acknowledge or clear any third-party content in this assessment material. OCR will be happy to correct its mistake at the earliest possible opportunity.

For queries or further information please contact the OCR Copyright Team, The Triangle Building, Shaftesbury Road, Cambridge CB2 8EA.

OCR is part of the Cambridge Assessment Group. Cambridge Assessment is the brand name of University of Cambridge Local Examinations Syndicate (UCLES), which is itself a department of the University of Cambridge.