

OCR

Oxford Cambridge and RSA

Friday 23 June 2017 – Morning

A2 GCE MATHEMATICS (MEI)

4754/01A Applications of Advanced Mathematics (C4) Paper A

QUESTION PAPER

Candidates answer on the Printed Answer Book.

OCR supplied materials:

- Printed Answer Book 4754/01A
- MEI Examination Formulae and Tables (MF2)

Other materials required:

- Scientific or graphical calculator

Duration: 1 hour 30 minutes



INSTRUCTIONS TO CANDIDATES

These instructions are the same on the Printed Answer Book and the Question Paper.

- The Question Paper will be found inside the Printed Answer Book.
- Write your name, centre number and candidate number in the spaces provided on the Printed Answer Book. Please write clearly and in capital letters.
- **Write your answer to each question in the space provided in the Printed Answer Book.** If additional space is required, you should use the lined page(s) at the end of the Printed Answer Book. The question number(s) must be clearly shown.
- Use black ink. HB pencil may be used for graphs and diagrams only.
- Read each question carefully. Make sure you know what you have to do before starting your answer.
- Answer **all** the questions.
- Do **not** write in the barcodes.
- You are permitted to use a scientific or graphical calculator in this paper.
- Final answers should be given to a degree of accuracy appropriate to the context.

INFORMATION FOR CANDIDATES

This information is the same on the Printed Answer Book and the Question Paper.

- The number of marks is given in brackets [] at the end of each question or part question on the Question Paper.
- You are advised that an answer may receive **no marks** unless you show sufficient detail of the working to indicate that a correct method is being used.
- The total number of marks for this paper is **72**.
- The Printed Answer Book consists of **16** pages. The Question Paper consists of **4** pages. Any blank pages are indicated.
- This paper will be followed by **Paper B: Comprehension**.

INSTRUCTION TO EXAMS OFFICER/INVIGILATOR

- Do not send this Question Paper for marking; it should be retained in the centre or recycled. Please contact OCR Copyright should you wish to re-use this document.

Section A (36 marks)

- 1 (i) Express $\frac{5-x}{(2-x)(1+x)}$ in partial fractions. [3]
- (ii) Hence or otherwise find the first 3 terms of the binomial expansion of $\frac{5-x}{(2-x)(1+x)}$ in ascending powers of x . [5]

- 2 The equation of a line is $\mathbf{r} = \begin{pmatrix} -1 \\ 0 \\ 1 \end{pmatrix} + \lambda \begin{pmatrix} 2 \\ -3 \\ 1 \end{pmatrix}$ and the equation of a plane is $3x + 4y - z = 17$.

- (i) Find the coordinates of the point of intersection of the line and the plane. [4]
- (ii) Find the acute angle between the line and the normal to the plane. [4]

- 3 Fig. 3 shows the curve $y = \sqrt{1 + e^{2x}}$.

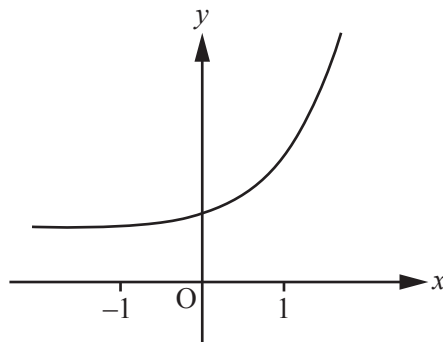


Fig. 3

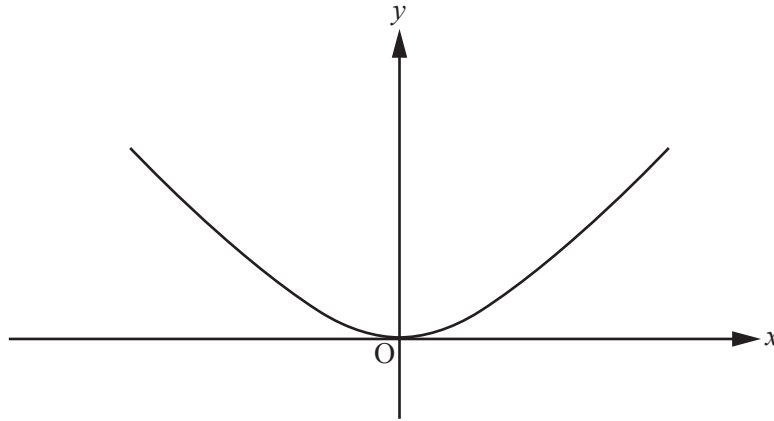
The value of $\int_{-1}^1 \sqrt{1 + e^{2x}} \, dx$ is to be estimated using the trapezium rule. T_2 and T_4 are the estimates obtained from the trapezium rule using 2 strips and 4 strips respectively.

- (i) Explain whether T_4 is greater or less than T_2 . [2]
- (ii) Evaluate T_4 , giving your answer to 3 significant figures. [4]
- 4 Vectors \mathbf{u} and \mathbf{v} are given by $\mathbf{u} = \mathbf{i} - 7\mathbf{j} - 2\mathbf{k}$ and $\mathbf{v} = a\mathbf{i} + b\mathbf{j} + 5\mathbf{k}$, where a and b are constants. Find a and b given that the magnitude of \mathbf{v} is $\sqrt{27}$ and that \mathbf{u} and \mathbf{v} are perpendicular. [6]
- 5 Solve the equation $4 \tan \theta \tan 2\theta = 1$, for $0^\circ < \theta < 180^\circ$. [4]
- 6 The number of bacteria in a population at time t is denoted by P . The rate of increase of P is proportional to the square root of P .
- (i) Write down a differential equation relating P , the time t , and a constant of proportionality k . [1]
- (ii) Verify that $P = (A + Bt)^2$, where A and B are constants, satisfies the differential equation, and find k in terms of B . [3]

Section B (36 marks)

- 7 The curve shown in Fig. 7 passes through the origin and satisfies the differential equation

$$\frac{dy}{dx} = \frac{9x}{4(y+3)}.$$

**Fig. 7**

- (i) Show by integration that the equation of the curve is $9x^2 - 4y^2 - 24y = 0$. [5]

The finite region bounded by the curve and the line $y = 2$ is rotated through 180° about the y -axis.

- (ii) Find the volume of the solid of revolution generated, giving your answer as an exact multiple of π . [4]

- (iii) Use the substitutions $x = 2 \tan \theta$ and $y = 3(\sec \theta - 1)$

(A) to verify that $9x^2 - 4y^2 - 24y = 0$,

(B) to show that $\frac{9x}{4(y+3)}$ can be expressed as $k \sin \theta$, where k is a constant to be found.

Hence find the exact gradient of the curve at the point with x -coordinate 2. [9]

8 Fig. 8 shows the curve with parametric equations

$$x = \cos 2\theta, y = \cos \theta + 2 \sin \theta, \text{ for } -\pi < \theta \leq \pi.$$

The curve intersects the x -axis at A, and the points B and C have maximum x - and y -coordinates respectively.

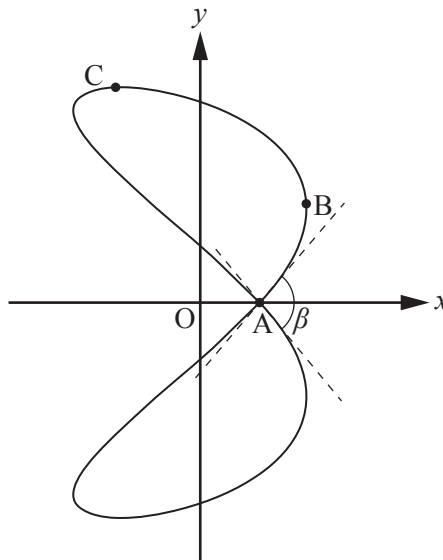


Fig. 8

- (i) Find the value of θ corresponding to the point B. Hence find the coordinates of the point B. [3]
- (ii) Express $\cos \theta + 2 \sin \theta$ in the form $R \cos(\theta - \alpha)$, where $R > 0$ and $0 < \alpha < \frac{1}{2}\pi$. [5]
- (iii) Hence find the coordinates of the points A and C. [5]

The angle β is the angle between the tangents to the curve at A.

- (iv) Find $\frac{dy}{dx}$ in terms of θ . Hence, assuming the scales of the x - and y -axes are equal, find β , giving the answer in radians correct to 2 decimal places. [You may assume the curve is symmetrical about the x -axis.] [5]

END OF QUESTION PAPER

OCR
Oxford Cambridge and RSA

Copyright Information

OCR is committed to seeking permission to reproduce all third-party content that it uses in its assessment materials. OCR has attempted to identify and contact all copyright holders whose work is used in this paper. To avoid the issue of disclosure of answer-related information to candidates, all copyright acknowledgements are reproduced in the OCR Copyright Acknowledgements Booklet. This is produced for each series of examinations and is freely available to download from our public website (www.ocr.org.uk) after the live examination series. If OCR has unwittingly failed to correctly acknowledge or clear any third-party content in this assessment material, OCR will be happy to correct its mistake at the earliest possible opportunity.

For queries or further information please contact the Copyright Team, First Floor, 9 Hills Road, Cambridge CB2 1GE.

OCR is part of the Cambridge Assessment Group; Cambridge Assessment is the brand name of University of Cambridge Local Examinations Syndicate (UCLES), which is itself a department of the University of Cambridge.