

**OXFORD CAMBRIDGE AND RSA EXAMINATIONS**  
**AS GCE**  
**G353/01/I**  
**MUSIC**  
**Introduction to Historical Study in Music**  
**INSERT**  
**MONDAY 23 MAY 2016: Morning**  
**DURATION: 1 hour 45 minutes**  
**(plus 15 minutes' preparation)**  
**plus your additional time allowance**  
**MODIFIED ENLARGED 24pt**

Candidate forename						Candidate surname					
Centre number						Candidate number					

**READ INSTRUCTIONS OVERLEAF**

## **INSTRUCTIONS TO CANDIDATES**

**Write your name clearly in capital letters, your centre number and candidate number in the boxes on the first page.**

**You will be allowed 15 MINUTES' PREPARATION TIME plus your additional time allowance at the start of the examination. During this time you may listen to the CD and look at the Question Paper and this Insert, but you must not write.**

### **SECTION A**

**This Insert contains skeleton scores of:**

**Extract 1A (pages 4 to 8) Questions 1 to 10**

**Extract 1B (pages 10 to 13) Questions 11 to 21.**

**Choose EITHER Extract 1A OR Extract 1B and answer all the questions on your chosen Extract.**

### **SECTION B**

**This Insert contains the full score of the music for Extract 2 (pages 14 to 17) Questions 22 to 27.**

## **INFORMATION FOR CANDIDATES**

**Any blank pages are indicated.**

**BLANK PAGE**

EXTRACT 1A  
THEME [© track 2]

Andantino

0'10" 0'15" 0'20"

6 0'25" 0'30"

10 0'35" 0'40"

14 0'45" 0'50"

*pp*

①7

0'55"

1'00"

1'05"

*fp* >

②1

1'10"

1'15"

*fp* >

②4

1'20"

1'25"

*pp*

27 1'30" 1'35"

This musical system contains measures 27, 28, and 29. It is written for piano in A major (three sharps) and 3/4 time. Measure 27 features a treble staff with a half note G4 and a bass staff with a half note F#3. Measure 28 has a treble staff with a half note A4 and a bass staff with a half note G3. Measure 29 has a treble staff with a half note B4 and a bass staff with a half note A3. Above measure 27 is a circled number 27. Above measure 28 is a rounded rectangle containing '1'30"'. Above measure 29 is a rounded rectangle containing '1'35"'. The system ends with a double bar line.

30 1'40" 1'45"

This musical system contains measures 30, 31, and 32. It continues the piece in A major and 3/4 time. Measure 30 has a treble staff with a half note C5 and a bass staff with a half note B2. Measure 31 has a treble staff with a half note D5 and a bass staff with a half note C3. Measure 32 has a treble staff with a half note E5 and a bass staff with a half note D3. Above measure 30 is a circled number 30. Above measure 31 is a rounded rectangle containing '1'40"'. Above measure 32 is a rounded rectangle containing '1'45"'. The system ends with a double bar line.

VARIATION [⊙ track 3]

33

0'05"

0'10"

0'15"

37

0'20"

0'25"

40a

0'50"

0'55"

40b

45

1'00"

(Flute)



1'05"

47

1'10"

1'15"

49

1'25"

53



**BLANK PAGE**

**EXTRACT 1B**

As in much popular music, this score represents an approximation of the rhythms played in the recording.

**PASSAGE 1i [Ⓢ track 4]**

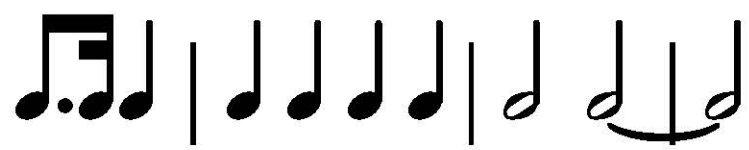
*Allegro*

0'10"

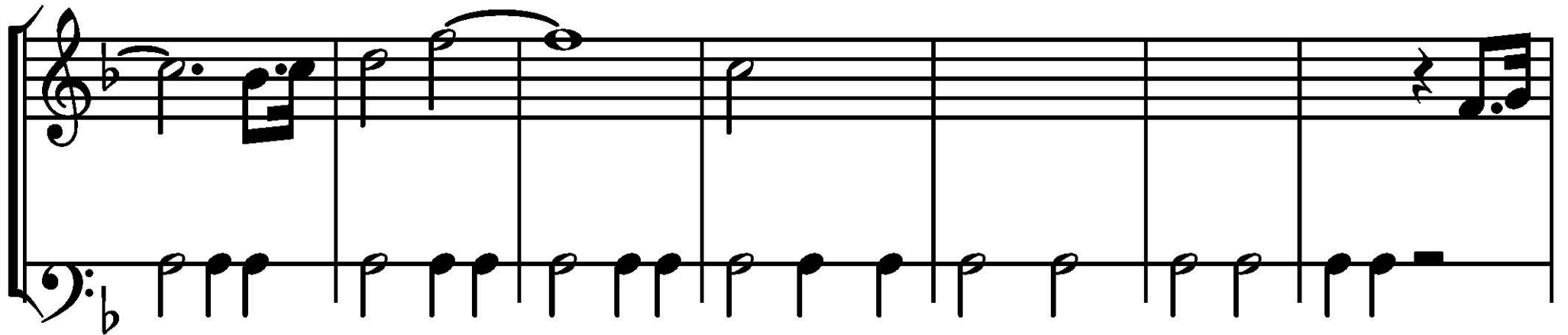
6 0'15"

12 0'20" 0'25"

0'30"



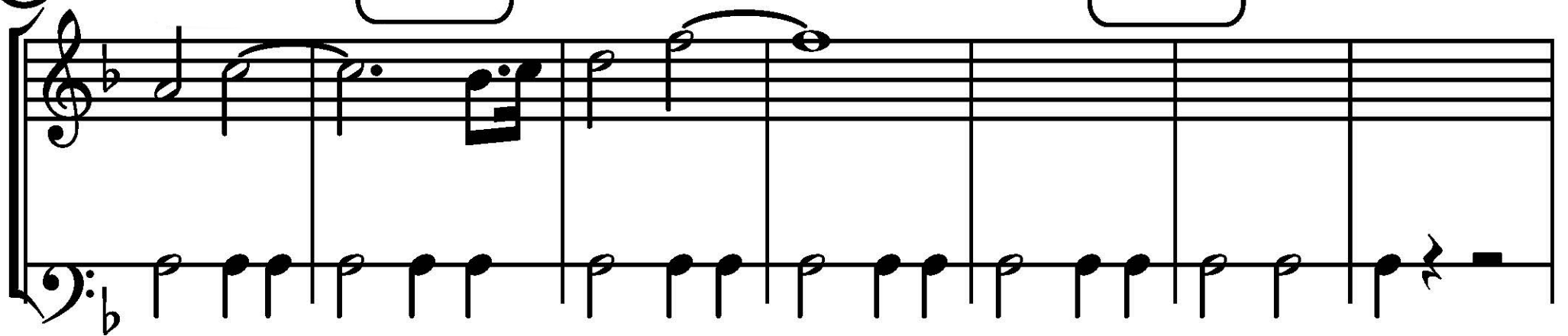
18



25

0'35"

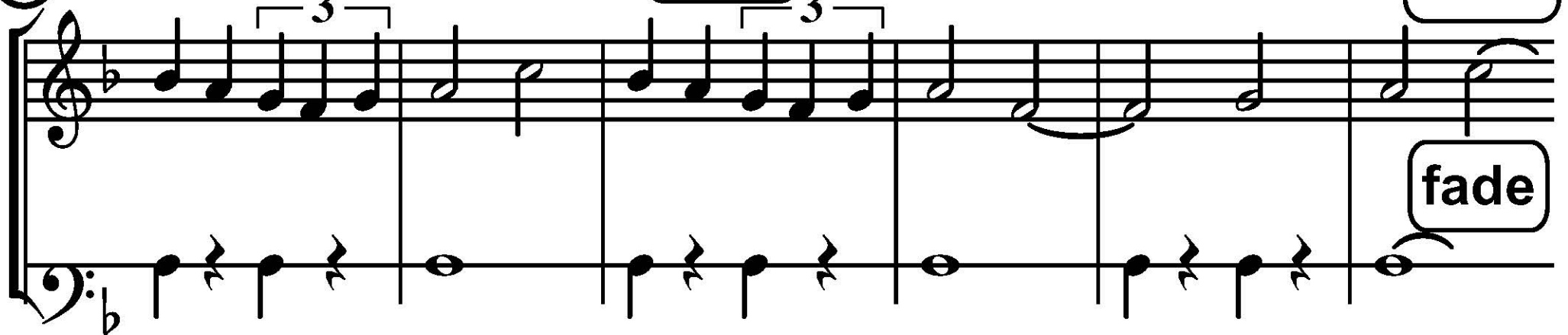
0'40"



32

0'45"

0'50"



PASSAGE 1ii [⊙ track 5]

38 0'10"

4/4

44 0'15" 0'20"

4/4

51 0'25"

4/4

56 0'30"

4/4

60

0'35"

0'40"

66

0'45"

EXTRACT 2

[© tracks 6 & 7]

Trumpet

Flute

Oboe

Violin

Violin I

Violin II

Viola

Violone

Violoncello  
e Cembalo  
all'unisono

4

Tpt.

Fl.

Ob.

Vln.

Vc. & Cemb.



7

Tpt.

Fl.

Ob.

Vln.

Vln.I

Vln.II

Vla.

Vne.

Vc. & Cemb.

*tr*

*piano*

*f*

*piano*

*f*

*piano*

*f*

10

Tpt.

Fl.

Ob.

Vln.

Vln.I

Vln.II

Vla.

Vne.

Vc. & Cemb.



12

Tpt.

Fl.

Ob.

Vln.

Vln.I

Vln.II

Vla.

Vne.

Vc. & Cemb.

*p*

*f*

*p*

*p*

piano

*p*

*p*

piano

piano

15

Tpt.

Fl.

Ob.

Vln.

Vln.I

Vln.II

Vla.

Vne.

Vc. & Cemb.

*p*

*f*

piano

*f*

*f*

*f*

*f*

*f*

*f*

*f*

18

Tpt.

Fl.

Ob.

Vln.

Vln.I

Vln.II

Vla.

Vne.

Vc. & Cemb.

This musical score page contains measures 18 through 21. The instruments are arranged in a standard orchestral format. The Tpt. (Trumpet) part has a melodic line with some rests. The Fl. (Flute) part plays a continuous sixteenth-note pattern. The Ob. (Oboe) part has a melodic line with a trill in measure 20. The Vln. (Violin) part plays a complex sixteenth-note pattern. The Vln.I (Violin I) part has a melodic line with some rests. The Vln.II (Violin II) part has a melodic line with some rests. The Vla. (Viola) part plays a continuous sixteenth-note pattern. The Vne. (Vibraphone) part plays a continuous sixteenth-note pattern. The Vc. & Cemb. (Violoncello and Contrabasso) part plays a continuous sixteenth-note pattern. The key signature is one flat (B-flat major or D minor) and the time signature is 4/4.

**BLANK PAGE**

**BLANK PAGE**



### Copyright Information

OCR is committed to seeking permission to reproduce all third-party content that it uses in its assessment materials. OCR has attempted to identify and contact all copyright holders whose work is used in this paper. To avoid the issue of disclosure of answer-related information to candidates, all copyright acknowledgements are reproduced in the OCR Copyright Acknowledgements Booklet. This is produced for each series of examinations and is freely available to download from our public website ([www.ocr.org.uk](http://www.ocr.org.uk)) after the live examination series.

If OCR has unwittingly failed to correctly acknowledge or clear any third-party content in this assessment material, OCR will be happy to correct its mistake at the earliest possible opportunity.

For queries or further information please contact the Copyright Team, First Floor, 9 Hills Road, Cambridge CB2 1GE.

OCR is part of the Cambridge Assessment Group; Cambridge Assessment is the brand name of University of Cambridge Local Examinations Syndicate (UCLES), which is itself a department of the University of Cambridge.