

OCR

Oxford Cambridge and RSA

Monday 15 June 2015 – Afternoon**GCSE HEALTH AND SOCIAL CARE****A914/02** Safeguarding and Protecting Individuals

Candidates answer on the Question Paper.

OCR supplied materials:

None

Other materials required:

None

Duration: 1 hourCandidate
forenameCandidate
surname

Centre number

Candidate number

INSTRUCTIONS TO CANDIDATES

- Write your name, centre number and candidate number in the boxes above. Please write clearly and in capital letters.
- Use black ink. Pencil may be used for graphs and diagrams only.
- Read each question carefully. Make sure you know what you have to do before starting your answer.
- Write your answer to each question in the space provided. If additional space is required, you should use the lined pages at the end of this booklet. The question number(s) must be clearly shown.
- Answer **all** the questions.
- Do **not** write in the bar codes.

INFORMATION FOR CANDIDATES

- The number of marks is given in brackets [] at the end of each question or part question.
- Quality of Written Communication will be assessed in questions marked with an asterisk (*).
- The total number of marks for this paper is **60**.
- This document consists of **12** pages. Any blank pages are indicated.

3

- 3 State **one** piece of legislation which contributes to safeguarding people with learning difficulties.

.....

Describe **three** key features of this legislation.

.....

.....

.....

.....

.....

.....

.....

.....

.....

.....

.....

..... [7]

4

4 State **two** different situations when care staff should wash their hands.

1.
2. [2]

5 Describe **three** ways hazardous waste should be disposed of in a nursing home.

1.
-
-
-
2.
-
-
-
3.
-
-
- [6]

6 Describe the purpose of food safety legislation.

-
-
-
- [2]

7 Describe the purpose of immunisation.

-
-
-
- [2]

8* Jayne is a first aider. She gives treatment to a child who has a scald to her hand from hot water.

Explain the first aid procedure Jayne should give for a scald.

..... [6]

9 Give **two** different examples of health emergencies which may cause breathing difficulties.

1.
2. [2]

10* You need to call the emergency services for an individual who has breathing difficulties.

Explain the importance of information that you need to give to the emergency services.

..... [7]

11 State the purpose of each of the following safety signs used in a hospital.



A



B



C

A.....

B.....

C.....

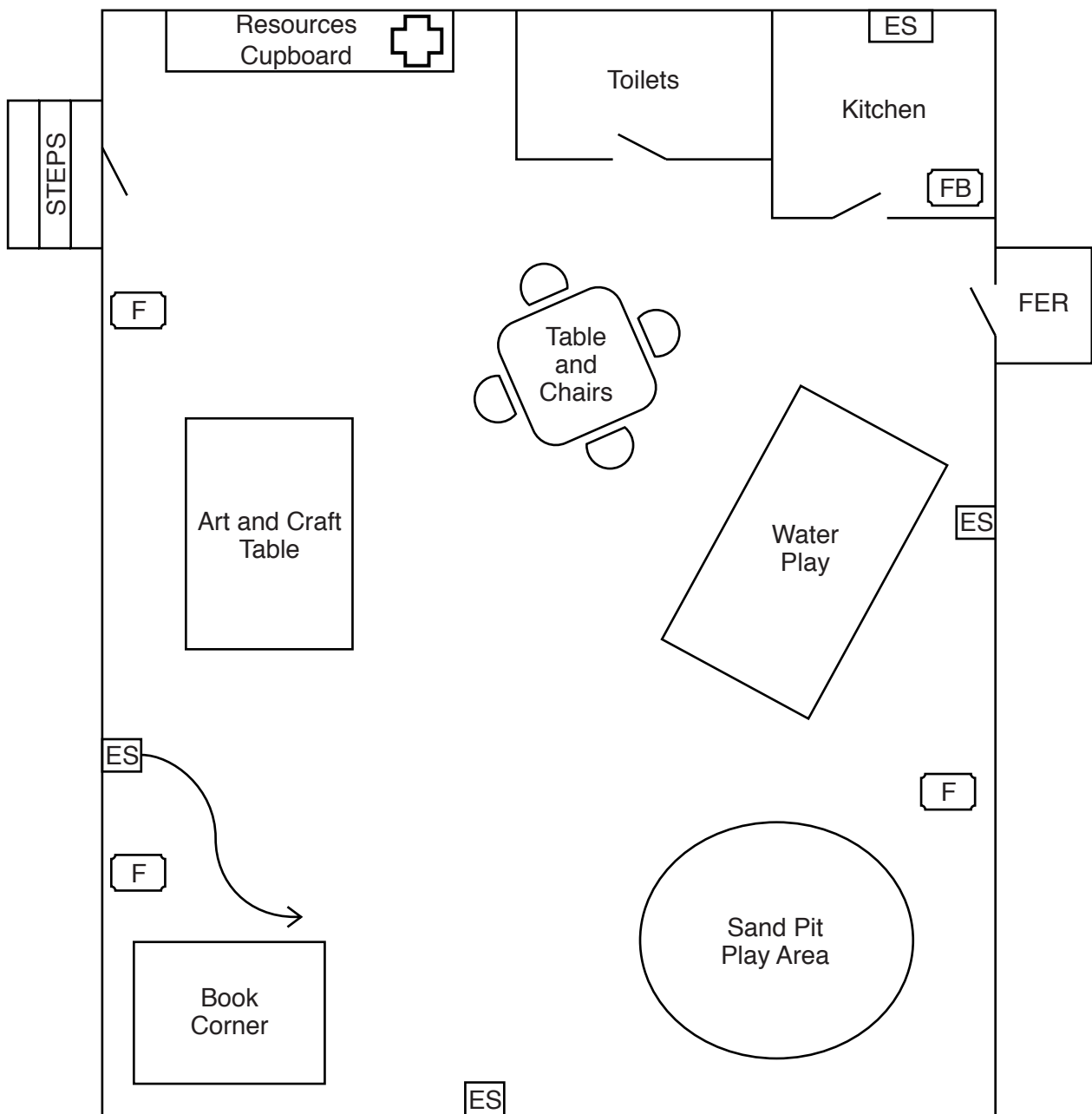
[3]

..... [6]

© OCR 2015

Turn over

Plan of Play Group



First Aid Box

FER

Fire Escape Ramp



Door



Extension lead



Fire Blanket



Electric Socket



Fire Extinguisher

13* Carry out a risk assessment for the play group. You need to:

- look for hazards
- think about who may be harmed
- consider the risks – whether precautions are adequate

..... [8]

END OF QUESTION PAPER

[illegible]

PLEASE DO NOT WRITE ON THIS PAGE



Copyright Information

OCR is committed to seeking permission to reproduce all third-party content that it uses in its assessment materials. OCR has attempted to identify and contact all copyright holders whose work is used in this paper. To avoid the issue of disclosure of answer-related information to candidates, all copyright acknowledgements are reproduced in the OCR Copyright Acknowledgements Booklet. This is produced for each series of examinations and is freely available to download from our public website (www.ocr.org.uk) after the live examination series.

If OCR has unwittingly failed to correctly acknowledge or clear any third-party content in this assessment material, OCR will be happy to correct its mistake at the earliest possible opportunity.

For queries or further information please contact the Copyright Team, First Floor, 9 Hills Road, Cambridge CB2 1GE.

OCR is part of the Cambridge Assessment Group; Cambridge Assessment is the brand name of University of Cambridge Local Examinations Syndicate (UCLES), which is itself a department of the University of Cambridge.