

**OCR**

Oxford Cambridge and RSA

**Wednesday 21 June 2017 – Afternoon****GCSE HEALTH AND SOCIAL CARE****A914/02** Safeguarding and Protecting Individuals

Candidates answer on the Question Paper.

**OCR supplied materials:**

None

**Other materials required:**

None

**Duration:** 1 hour

Candidate forename		Candidate surname	
-----------------------	--	----------------------	--

Centre number						Candidate number				
---------------	--	--	--	--	--	------------------	--	--	--	--

**INSTRUCTIONS TO CANDIDATES**

- Write your name, centre number and candidate number in the boxes above. Please write clearly and in capital letters.
- Use black ink. Pencil may be used for graphs and diagrams only.
- Read each question carefully. Make sure you know what you have to do before starting your answer.
- Write your answer to each question in the space provided. If additional space is required, you should use the lined page(s) at the end of this booklet. The question number(s) must be clearly shown.
- Answer **all** the questions.
- Do **not** write in the barcodes.

**INFORMATION FOR CANDIDATES**

- The number of marks is given in brackets [ ] at the end of each question or part question.
- Quality of Written Communication will be assessed in questions marked with an asterisk (\*).
- The total number of marks for this paper is **60**.
- This document consists of **12** pages. Any blank pages are indicated.

2

Answer **all** the questions.1 Identify **four** signs or symptoms of a fracture.

1 .....

2 .....

3 .....

4 .....  
[4]2 Choose **four** items, from the table below, that are appropriate to have in a basic first aid kit.Tick **four** items.

Items	Tick <b>four</b> only (✓)
A leaflet giving guidance on first aid	
A packet of painkillers	
2 sterile eye pads	
A pair of disposable gloves	
An inhaler	
4 individually wrapped triangular bandages	
Indigestion tablets	

[4]



**5\*** Analyse possible effects of a lack of safeguarding for older people living in their own homes.

[6]

**6** Identify **three** different situations where children may need to be safeguarded.

- 1 .....
- 2 .....
- 3 .....

**[3]**

5

7\* Explain the purpose of date stamping on food products.

.....

.....

.....

.....

.....

.....

.....

.....

.....

..... [4]

8 Give **three** good hygiene practices when cooking food.

1 .....

.....

2 .....

.....

3 .....

.....

[3]

**9\*** A nursery has reported an outbreak of measles as required by the Reporting of Injuries, Diseases and Dangerous Occurrences Regulations (RIDDOR).

Explain ways the nursery environment should be cleaned to reduce the risk of the infection spreading.

[6]

- 10 (i) Give the meaning of the term 'standard precautions' in health care settings.

.....

.....

..... [2]

- (ii) Give **one** example of a standard precaution that could be taken by a nurse on a hospital ward.

.....

..... [1]

- 11 Describe **two** ways a care setting can make sure the fire exits could be used safely.

1 .....

.....

.....

.....

.....

.....

2 .....

.....

.....

.....

.....

..... [4]

12 Identify and describe **one** hazard that could occur in a bedroom in a residential care home.

.....

.....

.....

.....

..... [2]

13 The two signs shown below are on the door of a hospital laboratory.

Identify each sign and state its purpose.

(i)



Sign .....

Purpose .....

.....

.....

[2]

(ii)



Sign .....

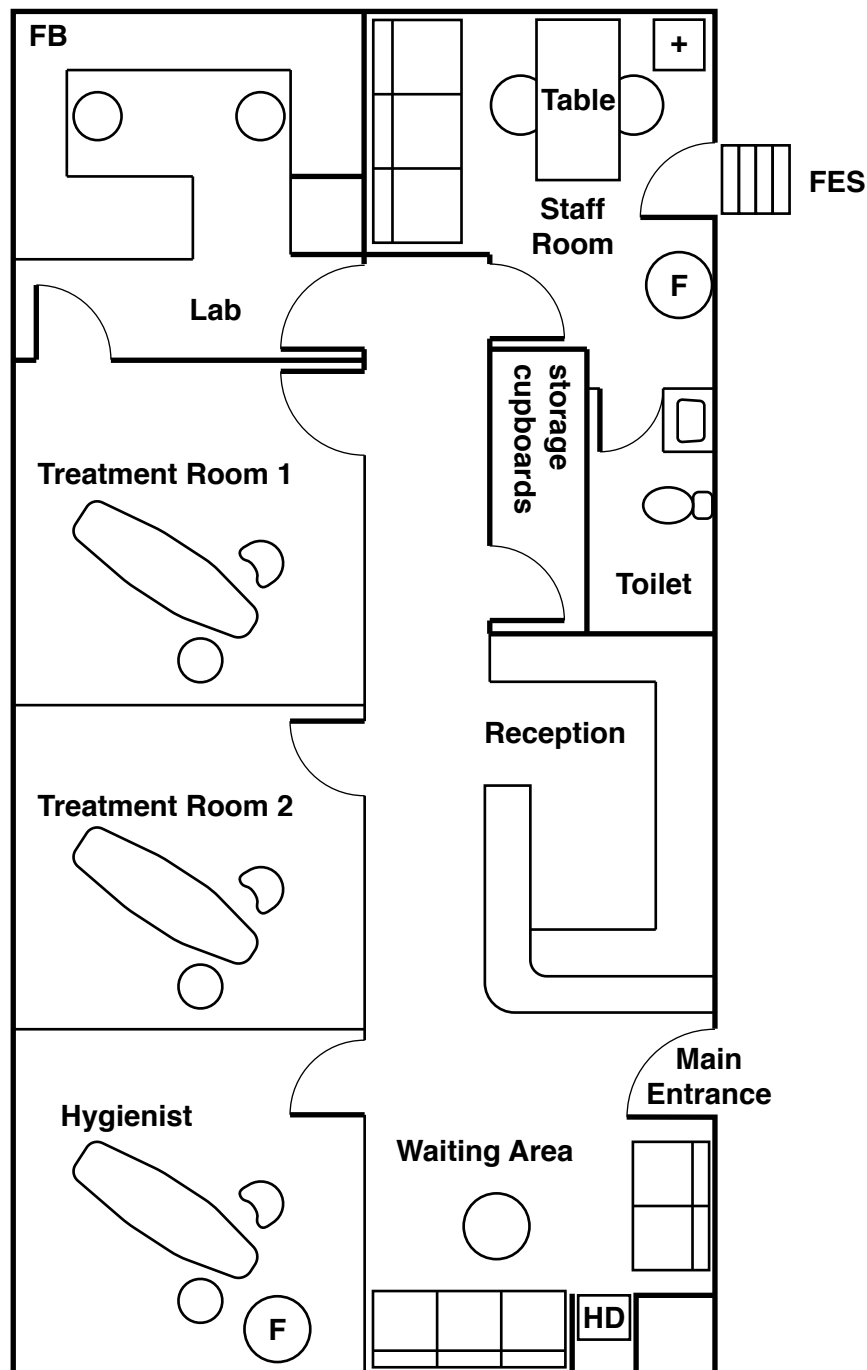
Purpose .....

.....

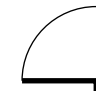


.....

[2]

Plan of a Dentist's Surgery



Key

- |  |   |
|--|---|
|  Door |  First Aid Box     |
| <b>HD</b> Hot Drinks Machine   | <b>FB</b> Fire Blanket  |
| <b>FES</b> Fire Escape Steps   |  Fire Extinguisher |

**14\*** Carry out a risk assessment for the dentist's surgery. You need to:

- look for hazards that could harm people, describe the risks
- consider whether existing precautions are adequate
- explain appropriate additional precautions that may be necessary.

[8]

**END OF QUESTION PAPER**

