

OCR

Oxford Cambridge and RSA

Tuesday 19 June 2018 – Afternoon**GCSE HEALTH AND SOCIAL CARE****A914/02** Safeguarding and Protecting Individuals

Candidates answer on the Question Paper.

OCR supplied materials:

None

Other materials required:

None

Duration: 1 hourCandidate
forenameCandidate
surname

Centre number

Candidate number

INSTRUCTIONS TO CANDIDATES

- Write your name, centre number and candidate number in the boxes above. Please write clearly and in capital letters.
- Use black ink. Pencil may be used for graphs and diagrams only.
- Read each question carefully. Make sure you know what you have to do before starting your answer.
- Write your answer to each question in the space provided. If additional space is required, you should use the lined page(s) at the end of this booklet. The question number(s) must be clearly shown.
- Answer **all** the questions.
- Do **not** write in the barcodes.

INFORMATION FOR CANDIDATES

- The number of marks is given in brackets [] at the end of each question or part question.
- Quality of Written Communication will be assessed in questions marked with an asterisk (*).
- The total number of marks for this paper is **60**.
- This document consists of **12** pages. Any blank pages are indicated.

2

Answer **all** the questions.

- 1** Identify **three** different personal hygiene procedures a care worker should follow and give a reason for each.

Personal hygiene procedure

Reason

.....

Personal hygiene procedure

Reason

.....

Personal hygiene procedure

Reason

.....

[6]

- 2 (i)** Identify two diseases or illnesses that must be reported in a care home.

1

2

[2]

- (ii)** Identify two conditions with the building or environment that must be reported.

1

2

[2]

4

4 State **two** requirements of the Health and Safety (First Aid) Regulations 1981.

1

.....

2

.....

[2]

5* Explain the procedure for carrying out first aid to a person who is having breathing difficulties.

.....

.....

.....

.....

.....

.....

.....

.....

.....

.....

.....

.....

.....

.....

..... [6]

5

- 6 Sundus has a bleeding arm wound with a large piece of glass in it.

Complete the table below either with the first aid procedures that should be followed or with reasons why the procedure is carried out.

Some procedures and reasons have been completed for you.

First aid procedure	Reason why
Ask someone to call 999 and get a first aid kit as soon as possible.	To obtain professional help as bleeding is severe.
	To expose the wound and give a clear view of it.
Do not remove the glass from the wound.	
	So that pressure can be applied on either side of the wound to try and slow down the bleeding, without pushing the glass further into the arm.
The wounded arm should be raised above the heart and supported.	
	The casualty may be feeling faint and it will be easier to elevate their arm from this position.
If the blood continues to seep through, a second dressing can be put on top of the first dressing.	

[6]

6

- 7 Janet does weekly shopping for John who is housebound. John always tells Janet to keep the change. Recently she has been taking more money than is required for the shopping.

Name the type of abuse that John is a victim of.

..... [1]

- 8 Give **two** reasons why care workers might ill-treat individuals with physical disabilities.

1

.....

2

.....

[2]

- 9 Name a piece of legislation that contributes to the safeguarding of individuals with physical disabilities.

..... [1]

- 10 Martin works at a residential school for young people with learning disabilities. He regularly shouts at them, or slaps them, if they are too noisy. He enjoys confusing them and often makes fun of them.

(i) Identify **two** types of ill-treatment from the scenario.

1

2

[2]

7

(ii)* Explain the possible effects of ill-treatment on young people with learning disabilities.

.....

.....

.....

.....

.....

.....

.....

.....

.....

.....

.....

.....

[6]

11* Describe **two** ways that wider society helps to protect individuals who are vulnerable and in need of safeguarding.

.....

.....

.....

.....

.....

.....

.....

.....

[4]

12 Identify a situation when you would use a fire blanket and describe how to use it.

Situation

How to use a fire blanket

.....

.....

.....

.....

[3]

13 Complete the table with the type of fire extinguisher that would be used for each type of fire.

Choose the type of fire extinguisher from the following list:

- Water
- Foam
- Carbon dioxide
- Dry powder.

Each type of extinguisher may be used once, more than once or, not at all.

Colour	Used for:	Type of extinguisher
cream marking	flammable liquids	
red marking	wood, paper, textiles	
blue marking	electrical fires	

[3]

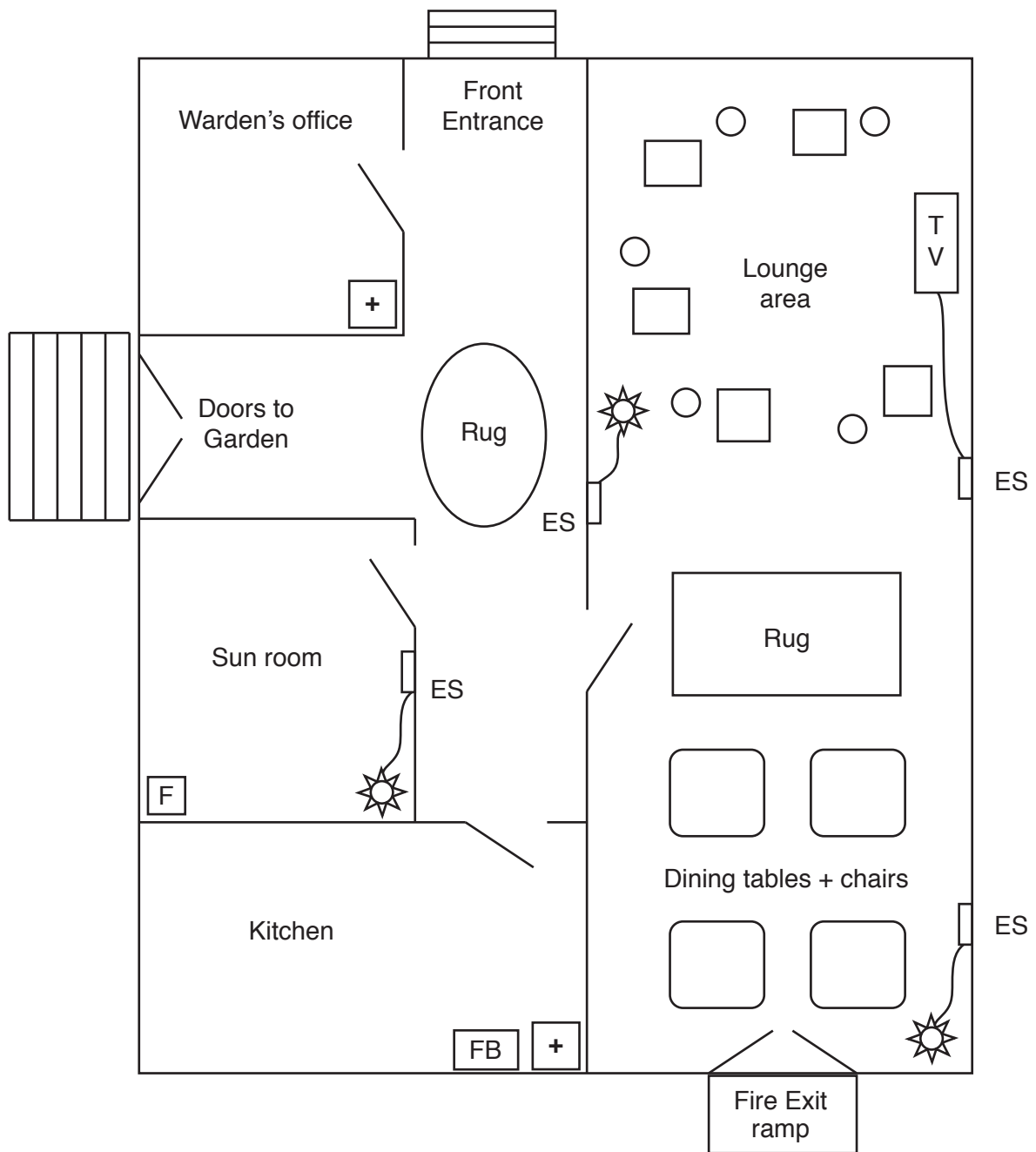
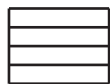
BLANK PAGE

Question 14 begins on page 10

PLEASE DO NOT WRITE ON THIS PAGE

10

Plan of the community area in sheltered accommodation for older people

**KEY:**

Steps

ES Electric Socket

TV Television



Table



Chair



Lamp



Electric Cable



First Aid Box



Fire Blanket



Fire Extinguisher



Door

14 Carry out a risk assessment for the community area in the sheltered accommodation for older people.

You need to:

- look for hazards that could harm people, describe the risks
- consider whether existing precautions are adequate
- explain appropriate additional precautions that may be necessary.

[8]

[8]

END OF QUESTION PAPER

