

**OCR**

Oxford Cambridge and RSA

**Thursday 15 June 2017 – Morning****GCSE HOME ECONOMICS****Child Development****B013/01** Principles of Child Development

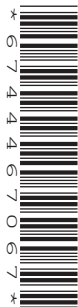
Candidates answer on the Question Paper.

**OCR supplied materials:**

None

**Other materials required:**

None

**Duration:** 1 hour 30 minutes

|                       |  |                      |  |
|-----------------------|--|----------------------|--|
| Candidate<br>forename |  | Candidate<br>surname |  |
|-----------------------|--|----------------------|--|

|               |  |  |  |  |  |                  |  |  |  |  |
|---------------|--|--|--|--|--|------------------|--|--|--|--|
| Centre number |  |  |  |  |  | Candidate number |  |  |  |  |
|---------------|--|--|--|--|--|------------------|--|--|--|--|

**INSTRUCTIONS TO CANDIDATES**

- Write your name, centre number and candidate number in the boxes above. Please write clearly and in capital letters.
- Use black ink. HB pencil may be used for graphs and diagrams only.
- Answer **all** the questions.
- Read each question carefully. Make sure you know what you have to do before starting your answer.
- Write your answer to each question in the space provided. If additional space is required, you should use the lined page(s) at the end of this booklet. The question number(s) must be clearly shown.
- Do **not** write in the barcodes.

**INFORMATION FOR CANDIDATES**

- The number of marks is given in brackets [ ] at the end of each question or part question.
- The total number of marks for this paper is **80**.
- Your quality of written communication is assessed in the question marked with an asterisk (\*).
- This document consists of **16** pages. Any blank pages are indicated.

2

Answer **all** the questions.

1 Certain toys will help to develop a child's fine motor skills.

(a) Look at the list below.

|          |           |         |         |         |
|----------|-----------|---------|---------|---------|
| 6 months | 18 months | 2 years | 3 years | 5 years |
|----------|-----------|---------|---------|---------|

Complete the table below matching the fine motor skill to the age range.

| Fine motor skills  | Age |
|--|-----|
| Can thread large beads                                       |     |
| Holds a rattle for a short amount of time before dropping it |     |
| Can pick up small toys using a fine pincer grasp             |     |
| Can dress independently                                      |     |
| Can control a pencil using the thumb and first two fingers   |     |

[5]

(b) Describe what is meant by **gross** motor skills.

.....

..... [1]

(c) Playing outside can help to develop a child's gross motor skills.

Suggest **four** outdoor activities which would help to develop a child's gross motor skills.

1 .....

2 .....

3 .....

4 .....

[4]

3

(d) Give **three** points a parent/ carer should consider when choosing clothes for outside play.

- 1 .....
- .....
- 2 .....
- .....
- 3 .....
- .....
- [3]

(e) Suggest **four** points parents/ carers should consider when buying shoes for children.

- 1 .....
- .....
- 2 .....
- .....
- 3 .....
- .....
- 4 .....
- .....
- [4]

(f) Parents/ carers may walk near roads with their children to get to a play area.  
Give **three** safety points parents / carers should follow when walking near roads with children.

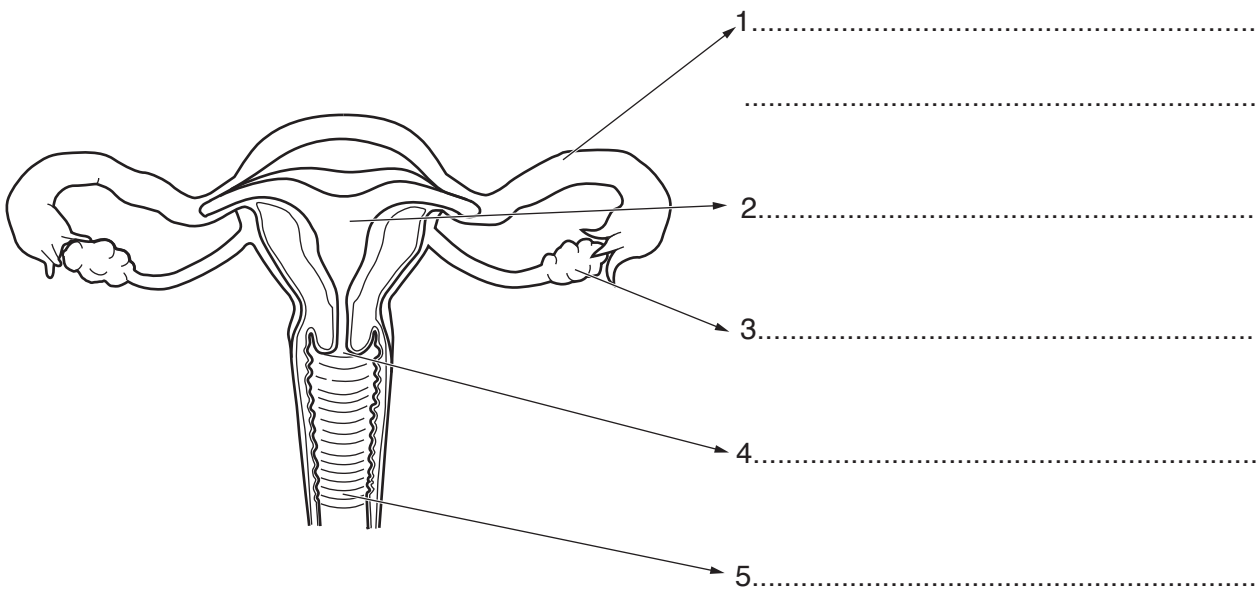
- 1 .....
- .....
- 2 .....
- .....
- 3 .....
- .....
- [3]

[Total: 20]

4

- 2 (a) The diagram below shows the female reproductive system.  
Label the diagram using the words below:

Fallopian tube  
Ovary  
Uterus  
Vagina  
Cervix



[5]

- (b) The chart below shows a 28 day menstrual cycle.

|                       |    |    |    |    |    |    |                 |    |                       |    |    |                    |    |    |
|-----------------------|----|----|----|----|----|----|-----------------|----|-----------------------|----|----|--------------------|----|----|
| 1                     | 2  | 3  | 4  | 5  | 6  | 7  | 8               | 9  | 10                    | 11 | 12 | 13                 | 14 | 15 |
| Stage 1: Menstruation |    |    |    |    |    |    | Stage 2: Repair |    |                       |    |    | Stage 3: Ovulation |    |    |
| 16                    | 17 | 18 | 19 | 20 | 21 | 22 | 23              | 24 | 25                    | 26 | 27 | 28                 |    |    |
| Stage 4: Receptive    |    |    |    |    |    |    |                 |    | Stage 5: Premenstrual |    |    |                    |    |    |

State which stage a woman is most likely to conceive.

..... [1]

- (c) Describe what happens to the lining of the womb during menstruation.

.....  
.....  
..... [2]

5

- (d) Some women can have difficulty conceiving a baby.  
Give **three** factors which can affect fertility in women.

1 .....

.....

2 .....

.....

3 .....

.....

[3]

- (e) Explain **two** possible fertility treatments which may be offered to a woman who is having difficulty conceiving.

1 .....

.....

.....

.....

2 .....

.....

.....

.....

[4]

[Total: 15]

**3\*** It is important that the pregnant woman makes preparations for the arrival of the new baby.

- Explain what is included in a birth plan.
- Discuss the advantages and disadvantages of having a home birth **or** a hospital birth. **[15]**

[illegible]

Handwriting practice lines consisting of 25 horizontal dotted lines.

- 4 (a) Preparing food safely for young children is important.  
Give **five** points which should be followed when preparing and cooking food.

1 .....

.....

2 .....

.....

3 .....

.....

4 .....

.....

5 .....

.....

[5]

- (b) Children sometimes need to be admitted to hospital.  
Explain **two** ways you could prepare a child for a stay in hospital.

.....

.....

.....

.....

.....

.....

.....

.....

.....

.....

[4]



(c) Identify how **two** different physical needs of a child could be met when they are ill.

1 .....

.....

2 .....

.....

[2]

(d) Infections can be caused by bacteria or viruses.  
Describe **one** way infections can enter the body.

.....

.....

..... [2]

(e) Immunisation programmes can prevent serious illnesses.  
Give **two** illnesses the 5-in-1 vaccine will protect against.

1 .....

2 .....

[2]

[Total: 15]

10

- 5 (a) When babies are born they cannot speak.  
Give **two** ways they can communicate with people.

1 .....

2 ..... [2]

- (b) Reading to children can help their language to develop.

- (i) Give **two** other ways parents/carers can help a child's language to develop.

1 .....

.....

2 .....

..... [2]

- (ii) Identify **two** other reasons why reading books with children is important for their development.

1 .....

.....

2 .....

..... [2]

- (c) Give **two** factors which should be considered when choosing books for babies and toddlers.

1 .....

.....

2 .....

..... [2]

- (d) Give **one** reason why there is a greater need for child care provision today.

.....

..... [1]

11

- (e) Complete the chart below to show **two** advantages and **one** disadvantage of each type of day care provision.

Do not use an advantage in one type of provision as a disadvantage in the other type.

| Type of provision    | Advantage | Disadvantage |
|----------------------|-----------|--------------|
| <b>Child minding</b> | 1 .....   | 1 .....      |
|                      | 2 .....   |              |
| <b>Nannies</b>       | 1 .....   | 1 .....      |
|                      | 2 .....   |              |

[6]

[Total: 15]

END OF QUESTION PAPER



This image shows a full page of primary-ruled paper. It features a vertical solid line on the left side, creating a narrow margin. The rest of the page is filled with horizontal dashed lines, providing a guide for handwriting practice. There are no markings or text on the page.

[illegible]

[illegible]

This image shows a blank sheet of white paper designed for handwriting practice. It features a solid black vertical line on the left side, creating a narrow margin. The rest of the page is filled with evenly spaced, horizontal dashed lines for writing. There are no other markings, text, or illustrations on the page.

Oxford Cambridge and RSA

### Copyright Information

OCR is committed to seeking permission to reproduce all third-party content that it uses in its assessment materials. OCR has attempted to identify and contact all copyright holders whose work is used in this paper. To avoid the issue of disclosure of answer-related information to candidates, all copyright acknowledgements are reproduced in the OCR Copyright Acknowledgements Booklet. This is produced for each series of examinations and is freely available to download from our public website ([www.ocr.org.uk](http://www.ocr.org.uk)) after the live examination series.

If OCR has unwittingly failed to correctly acknowledge or clear any third-party content in this assessment material, OCR will be happy to correct its mistake at the earliest possible opportunity.

For queries or further information please contact the Copyright Team, First Floor, 9 Hills Road, Cambridge CB2 1GE.

OCR is part of the Cambridge Assessment Group; Cambridge Assessment is the brand name of University of Cambridge Local Examinations Syndicate (UCLES), which is itself a department of the University of Cambridge.