



**Wednesday 13 May 2015 – Morning**

**GCSE INFORMATION AND COMMUNICATION TECHNOLOGY**

**B061/02** ICT in Today's World

Candidates answer on the Question Paper.

**OCR supplied materials:**

None

**Other materials required:**

None

**Duration:** 1 hour



Candidate  
forename

Candidate  
surname

Centre number

Candidate number

### INSTRUCTIONS TO CANDIDATES

- Write your name, centre number and candidate number in the boxes above. Please write clearly and in capital letters.
- Use black ink. HB pencil may be used for graphs and diagrams only.
- Answer **all** the questions.
- Read each question carefully. Make sure you know what you have to do before starting your answer.
- Write your answer to each question in the space provided. Additional paper may be used if necessary but you must clearly show your candidate number, centre number and question number(s).
- Do **not** write in the bar codes.

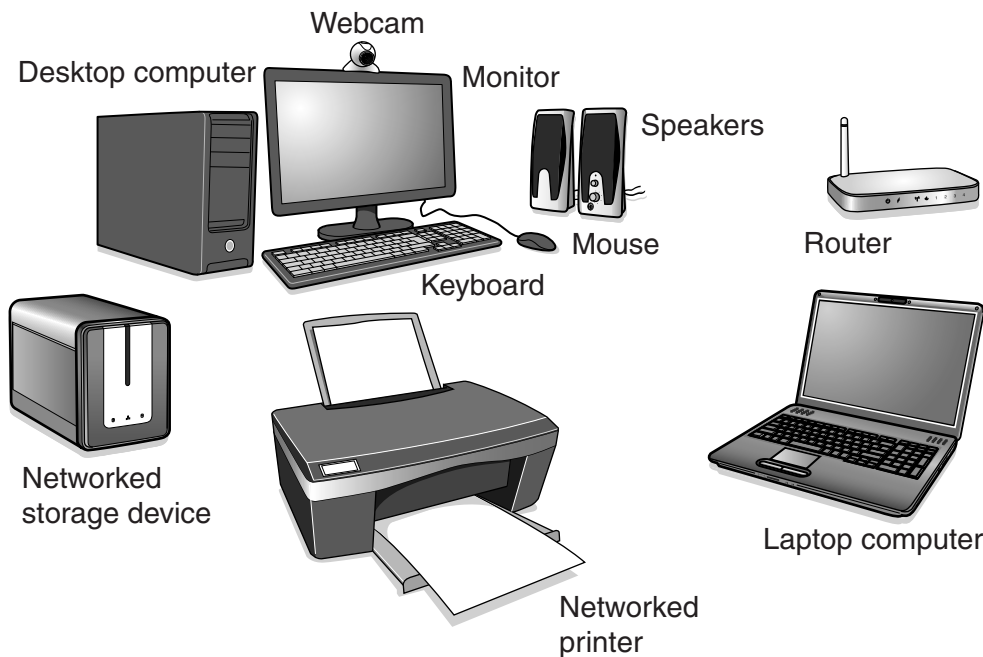
### INFORMATION FOR CANDIDATES

- The number of marks is given in brackets [ ] at the end of each question or part question.
- The total number of marks for this paper is **60**.
- Quality of written communication is assessed in questions marked with an asterisk (\*).
- This document consists of **12** pages. Any blank pages are indicated.

2

Answer **all** the questions.

- 1 Sarah uses the desktop computer system and the laptop computer shown in **Fig. 1**.



**Fig. 1**

- (a) Sarah uses the desktop computer system to play computer games.

- (i) Identify **two** input devices shown in **Fig. 1**.

1 .....

2 ..... [2]

- (ii) Identify **one** other input device that could be added to the desktop computer system to make playing games easier.

..... [1]

- (iii) Identify **two** output devices shown in **Fig. 1**.

1 .....

2 ..... [2]

- (b) State **one** communication device in the desktop computer system that is used to connect it to the network.

..... [1]

(c) Sarah uses instant messaging to contact other players when playing online computer games.

(i) Why would Sarah use instant messaging to contact other players?

.....

.....

.....

.....

.....

.....

.....

..... [4]

Sarah often plays online games with people she does not know.

(ii) Explain **one disadvantage** of Sarah using instant messaging when playing online games with people she does not know.

.....

.....

.....

..... [2]

(d) Sarah's computer system includes a networked storage device.

Describe **one** benefit of using a **networked** storage device.

.....

.....

.....

..... [2]

- \* (e)** Sarah shops online and stores her personal and financial details on the same computer she uses to play online games. Sarah is worried that her personal and financial details might be stolen by other players.

Explain how Sarah could try to make sure that the personal and financial details stored on her computer are protected.

*Marks will be awarded for the quality of written communication in your answer.*

[8]

5

- 2 A marketing presentation to show to a large group of supermarket managers has been created.

State **five** features that could be used in a slideshow presentation that could not be used in a written report.

1 .....

.....

2 .....

.....

3 .....

.....

4 .....

.....

5 .....

.....

[5]

6

- 3 William has collected data about the queues at different supermarket checkouts on four different days. He has counted the number of people in each queue at 1 pm.

He uses a spreadsheet with formulas to store some of the data. His spreadsheet is shown in Fig. 2.

|    | A   | B               | C  | D  | E | F   |
|----|---|-----------------|----|----|---|---|
| 1  | People queuing at supermarket checkouts at 1 pm |                 |    |    |   |   |
| 2  |   |                 |    |    |   |   |
| 3  | Day   | Checkout number |    |    |   | Total number of people queuing at all checkouts |
| 4  |   | 1               | 2  | 3  | 4 |   |
| 5  | Saturday  | 9               | 6  | 9  | 1 | 25  |
| 6  | Sunday  | 2               | 5  | 5  | 0 | 12  |
| 7  | Monday  | 4               | 7  | 5  | 0 | 16  |
| 8  | Tuesday   | 5               | 6  | 6  | 0 | 17  |
| 9  |   |                 |    |    |   |   |
| 10 | Total   | 20              | 24 | 25 | 1 | 70  |
| 11 |   |                 |    |    |   |   |
| 12 |   |                 |    |    |   |   |
| 13 | Average per day                                 | 5               | 6  | 6  | 0 |   |
| 14 |   |                 |    |    |   |   |

Fig. 2

- (a) William has entered formulas into cells B10 and B13.

- (i) Write down the **most** suitable formula for use in cell B10.

..... [2]

- (ii) Write down the **most** suitable formula for use in cell B13.

..... [2]

- (iii) When William was creating the spreadsheet he entered the formulas into cells B10 and B13. He wants to put similar formulas into cells C10 to E10 and into C13 to E13.

Describe how William could do this without typing each formula again.

.....

.....

.....

.....

.....

..... [3]

- (b) William used cell formatting on some of the cells to make the spreadsheet easier to read and understand.

- (i) Describe what William has done to format the label 'Total number of people queuing at all checkouts'.

.....

.....

.....

.....

.....

.....

.....

..... [4]

- (ii) Cells B13 to E13 are formatted so that the contents appear as whole numbers.

Explain why the cells are formatted in this way.

.....

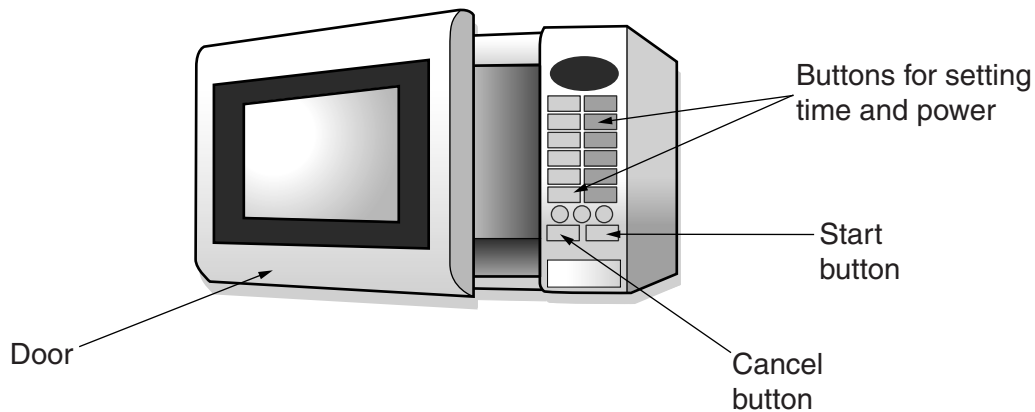
.....

.....

..... [2]

8

- 4 The programmable microwave oven in **Fig. 3** is used for cooking food. It has an embedded computer system that the user can program by entering the required power setting and cooking time.



**Fig. 3**

When the user presses the start button, the system makes three checks before starting the microwave oven. First it checks that the time has been set, then that the power has been set and then that the door is closed.

The system will stop the oven if:

- the cancel button is pressed
- or
- the set time is reached.

Part of the sequence of instructions to control the system is shown in **Fig. 4**. Some of the labels are missing and are shown in **Table 1**.

Choose words or phrases from **Table 1** to complete the labels A, B, C, D, E and F.

**[6]**



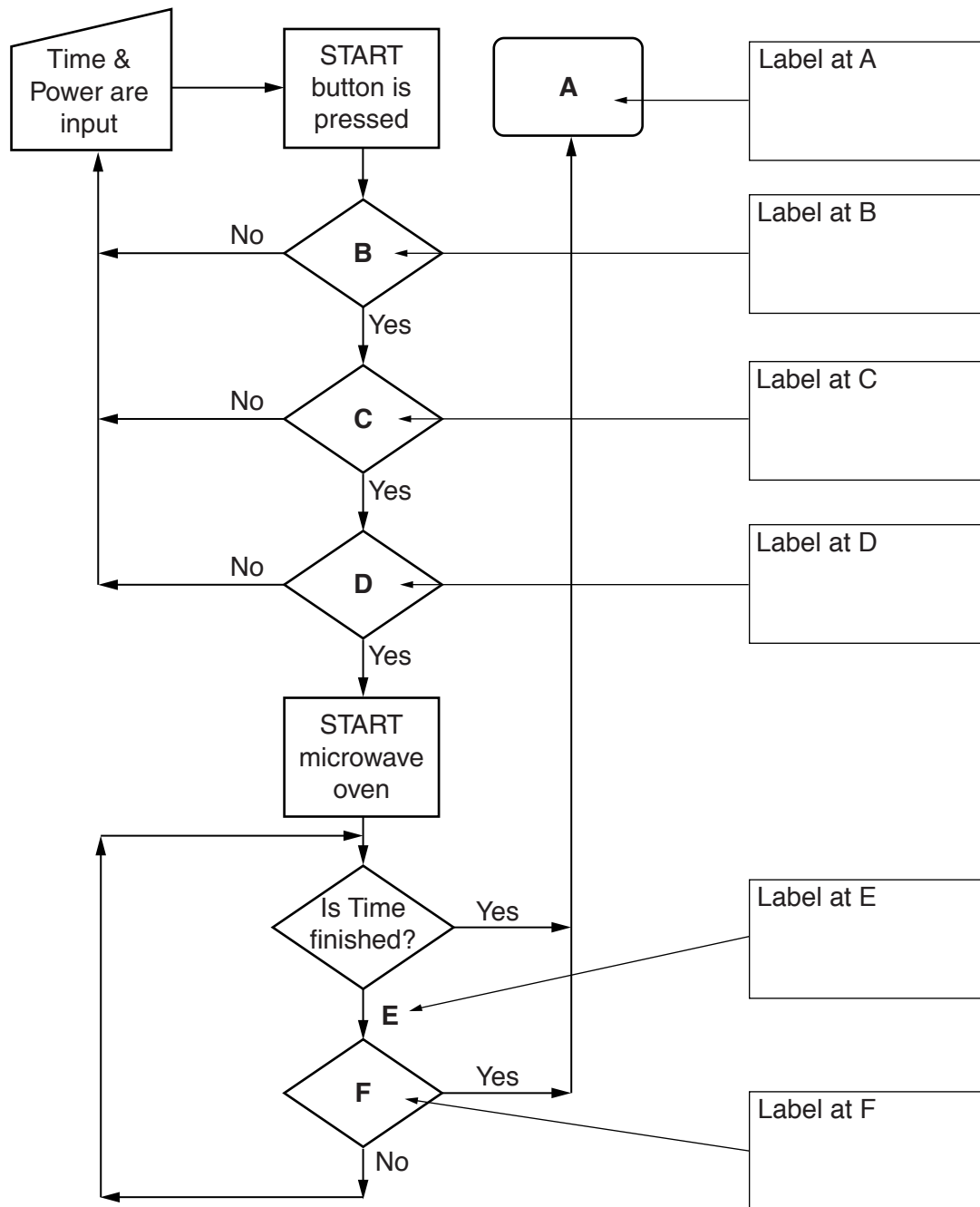


Fig. 4

| Labels              |                 |                      |
|---------------------|-----------------|----------------------|
| Is CANCEL pressed?  | Is DOOR closed? | Is POWER set?        |
| Is TIME set?        | No              | START microwave oven |
| STOP microwave oven | Yes             |                      |

Table 1



6 (a) State **two** uses of holographic imaging.

- 1 .....
- .....
- 2 .....
- .....
- [2]

(b) Describe the impact of 3D printing on the manufacturing industry.

- .....
- .....
- .....
- .....
- .....
- .....
- .....
- .....
- [4]

**END OF QUESTION PAPER**

**PLEASE DO NOT WRITE ON THIS PAGE**



**Copyright Information**

OCR is committed to seeking permission to reproduce all third-party content that it uses in its assessment materials. OCR has attempted to identify and contact all copyright holders whose work is used in this paper. To avoid the issue of disclosure of answer-related information to candidates, all copyright acknowledgements are reproduced in the OCR Copyright Acknowledgements Booklet. This is produced for each series of examinations and is freely available to download from our public website ([www.ocr.org.uk](http://www.ocr.org.uk)) after the live examination series.

If OCR has unwittingly failed to correctly acknowledge or clear any third-party content in this assessment material, OCR will be happy to correct its mistake at the earliest possible opportunity.

For queries or further information please contact the Copyright Team, First Floor, 9 Hills Road, Cambridge CB2 1GE.

OCR is part of the Cambridge Assessment Group; Cambridge Assessment is the brand name of University of Cambridge Local Examinations Syndicate (UCLES), which is itself a department of the University of Cambridge.