

**OXFORD CAMBRIDGE AND RSA EXAMINATIONS  
GCSE  
B061/02  
INFORMATION AND COMMUNICATION  
TECHNOLOGY**

**ICT in Today's World  
INSERT for Questions 3 (FIG. 2) and  
4 (FIG. 4 and Table 1)**

**WEDNESDAY 13 MAY 2015: Morning  
MODIFIED ENLARGED 24pt**

<b>Candidate forename</b>						<b>Candidate surname</b>					
<b>Centre number</b>						<b>Candidate number</b>					

**INSTRUCTIONS TO CANDIDATES**

**Write your name, centre number and  
candidate number in the spaces provided  
at the top of this page. Please write clearly  
and in capital letters.**

**Use black ink. HB pencil may be used for  
graphs and diagrams only.**

**This insert should be used to answer  
questions 3 and 4.**

**Write your answers to question 4 in the  
spaces provided in this insert, and attach it  
to your answer booklet.**

**BLANK PAGE**

FIG. 2

	A	B	C	D	E	F
1	People queuing at supermarket checkouts at 1 pm					
2						
3	Day	Checkout number				TOTAL NUMBER OF PEOPLE QUEUING AT ALL CHECKOUTS
4		1	2	3	4	
5	Saturday	9	6	9	1	25
6	Sunday	2	5	5	0	12
7	Monday	4	7	5	0	16
8	Tuesday	5	6	6	0	17
9						
10	Total	20	24	25	1	70
11						
12						
13	Average per day	5	6	6	0	
14						

FIG. 4

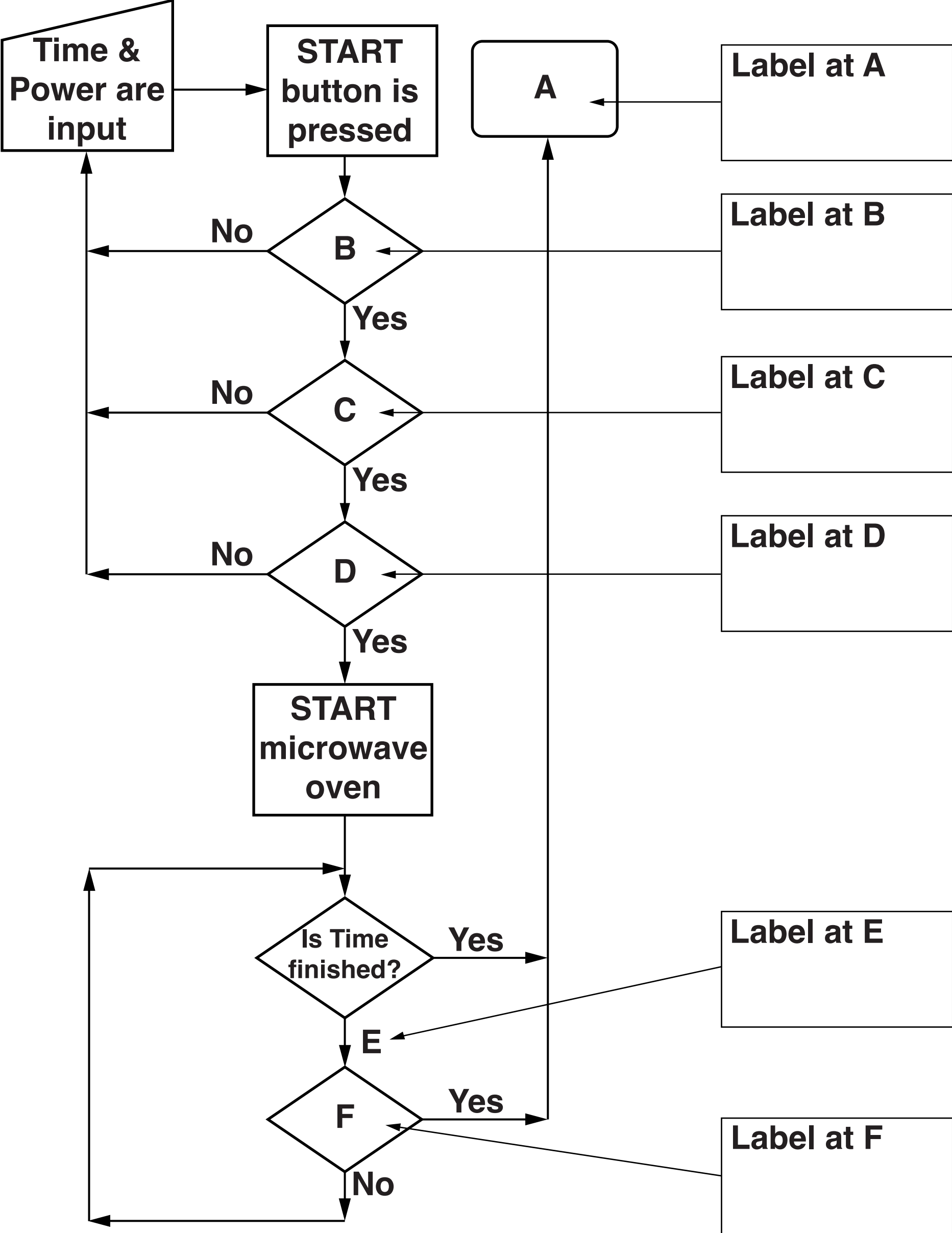


TABLE 1

LABELS		
Is CANCEL pressed?	Is DOOR closed?	Is POWER set?
Is TIME set?	No	START microwave oven
STOP microwave oven	Yes	

**BLANK PAGE**

**BLANK PAGE**

### Copyright Information

OCR is committed to seeking permission to reproduce all third-party content that it uses in its assessment materials. OCR has attempted to identify and contact all copyright holders whose work is used in this paper. To avoid the issue of disclosure of answer-related information to candidates, all copyright acknowledgements are reproduced in the OCR Copyright Acknowledgements Booklet. This is produced for each series of examinations and is freely available to download from our public website ([www.ocr.org.uk](http://www.ocr.org.uk)) after the live examination series.

If OCR has unwittingly failed to correctly acknowledge or clear any third-party content in this assessment material, OCR will be happy to correct its mistake at the earliest possible opportunity.

For queries or further information please contact the Copyright Team, First Floor, 9 Hills Road, Cambridge CB2 1GE.

OCR is part of the Cambridge Assessment Group; Cambridge Assessment is the brand name of University of Cambridge Local Examinations Syndicate (UCLES), which is itself a department of the University of Cambridge.

