

**OXFORD CAMBRIDGE AND RSA EXAMINATIONS**  
**GCSE**  
**B721/01**

**GATEWAY SCIENCE**  
**ADDITIONAL SCIENCE B**  
**Additional Science modules**  
**B3, C3, P3 (Foundation Tier)**

**WEDNESDAY 14 JUNE 2017: Morning**  
**DURATION: 1 hour 15 minutes**  
**plus your additional time allowance**

**MODIFIED ENLARGED**

<b>Candidate forename</b>		<b>Candidate surname</b>	
-------------------------------	--	------------------------------	--

<b>Centre number</b>						<b>Candidate number</b>				
--------------------------	--	--	--	--	--	-----------------------------	--	--	--	--

**Candidates answer on the Question Paper.**  
**A calculator may be used for this paper.**

**OCR SUPPLIED MATERIALS:**  
**A copy of the Periodic Table**

**OTHER MATERIALS REQUIRED:**  
**Pencil**  
**Ruler (cm/mm)**

**READ INSTRUCTIONS OVERLEAF**



## **INSTRUCTIONS TO CANDIDATES**

**Write your name, centre number and candidate number in the boxes on the front page. Please write clearly and in capital letters.**

**Use black ink. HB pencil may be used for graphs and diagrams only.**

**Answer ALL the questions.**

**Read each question carefully. Make sure you know what you have to do before starting your answer.**

**Write your answer to each question in the space provided. If additional space is required, you should use the lined page(s) at the end of this booklet. The question number(s) must be clearly shown.**

## **INFORMATION FOR CANDIDATES**

**The quality of written communication is assessed in questions marked with a pencil ().**

**A list of equations can be found on pages 4–5.**

**The number of marks is given in brackets [ ] at the end of each question or part question.**

**The total number of marks for this paper is 75.**

**BLANK PAGE**

## **EQUATIONS**

**energy = mass × specific heat capacity × temperature change**

**energy = mass × specific latent heat**

**efficiency =  $\frac{\text{useful energy output (} \times 100\% \text{)}}{\text{total energy input}}$**

**wave speed = frequency × wavelength**

**power = voltage × current**

**energy supplied = power × time**

**average speed =  $\frac{\text{distance}}{\text{time}}$**

**distance = average speed × time**

$$s = \frac{(u + v)}{2} \times t$$

**acceleration =  $\frac{\text{change in speed}}{\text{time taken}}$**

**force = mass × acceleration**

**weight = mass × gravitational field strength**

**work done = force × distance**

**power =  $\frac{\text{work done}}{\text{time}}$**

**power = force × speed**

$$\text{KE} = \frac{1}{2} mv^2$$

**momentum = mass × velocity**

$$\text{force} = \frac{\text{change in momentum}}{\text{time}}$$

$$\text{GPE} = mgh$$

$$mgh = \frac{1}{2} mv^2$$

$$\text{resistance} = \frac{\text{voltage}}{\text{current}}$$

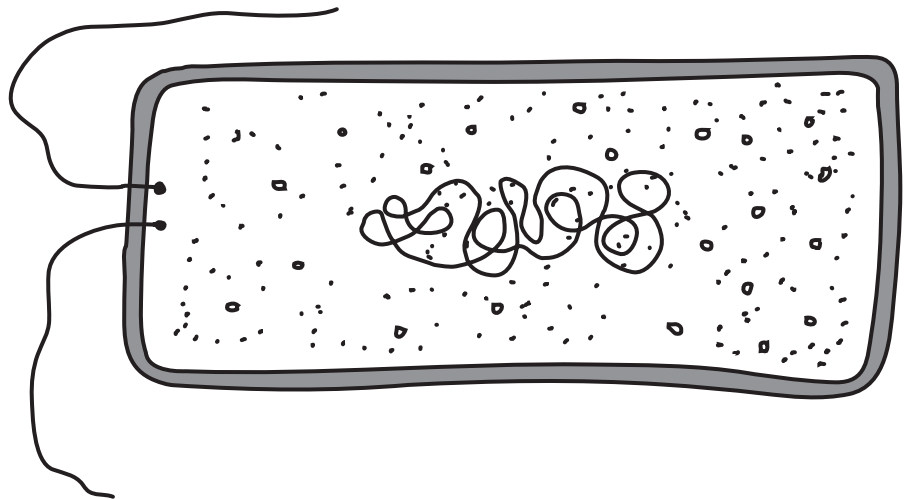
**Answer ALL the questions.**

**SECTION A – Module B3**

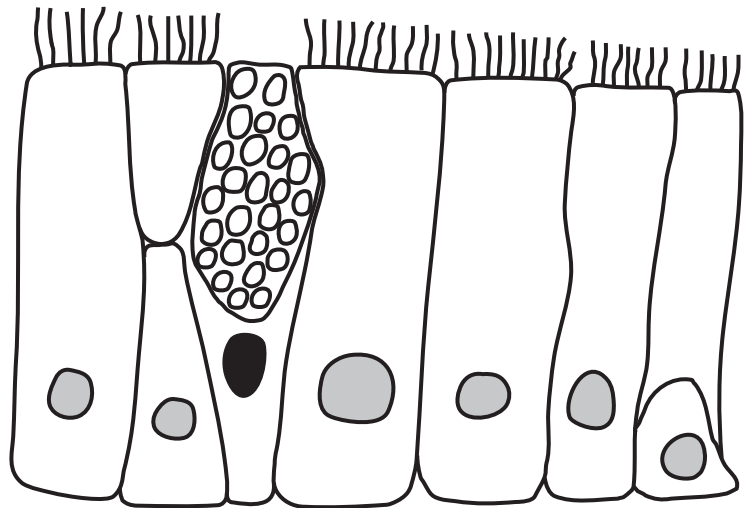
**1 Look at the diagrams.**

**They show cells taken from two different organisms.**

**ORGANISM A**



**ORGANISM B**



- (a) Organism A is a simple organism but organism B is a complex organism.

Explain how you can tell this.

---

---

---

[2]

- (b) Look at the diagram below.

It shows a reaction involving an enzyme.

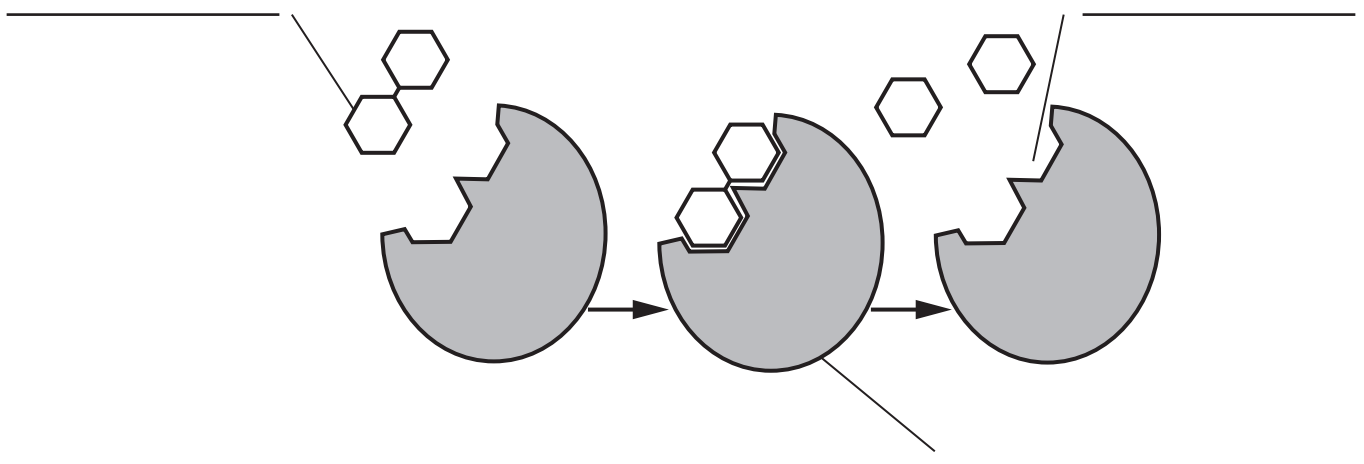
Label the diagram.

Choose words from the list. [2]

active site

enzyme

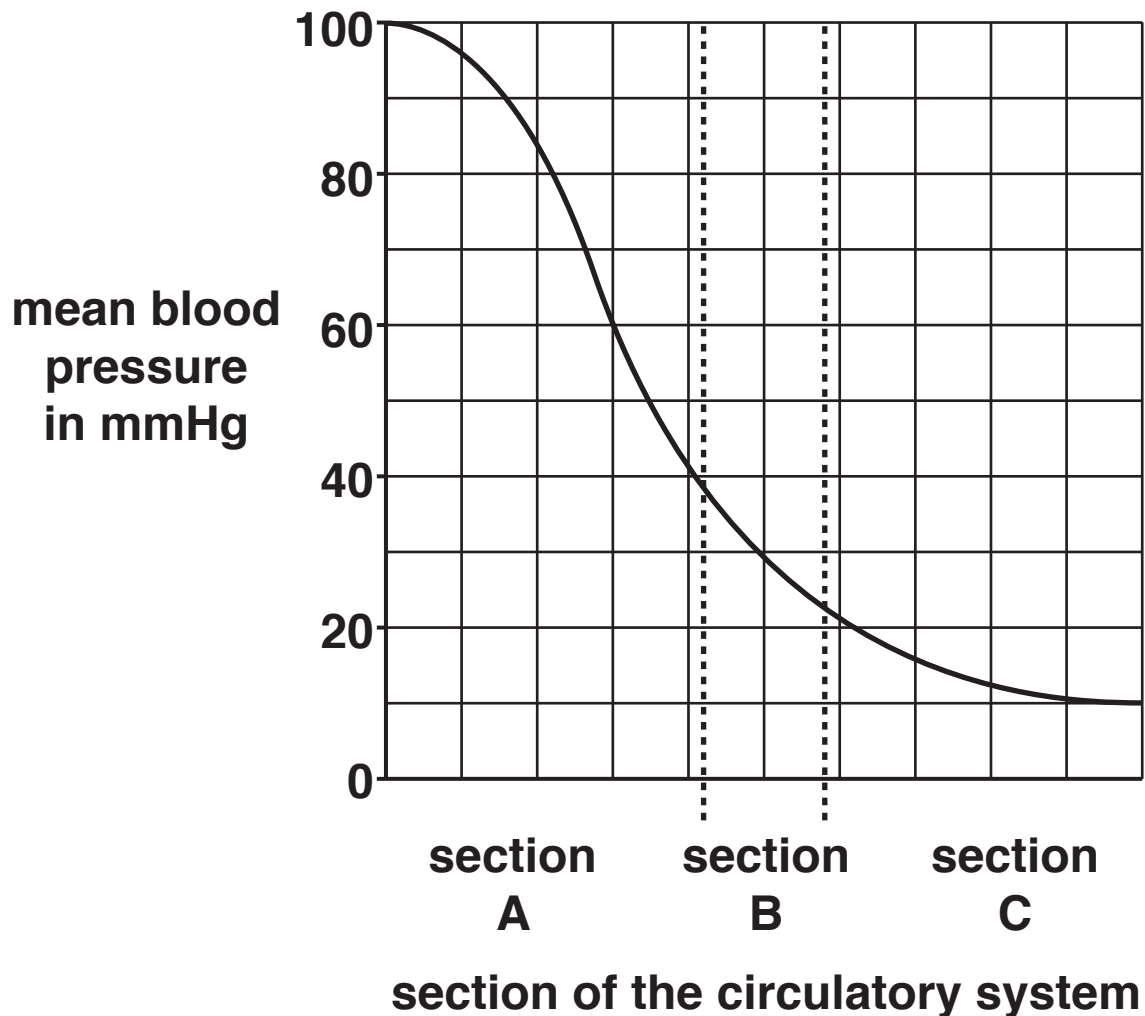
substrate



**2 This question is about the circulatory system.**

**Look at the graph below.**

**It shows how blood pressure changes as blood flows through three different sections of the circulatory system.**



- (a) (i) Calculate the change in mean blood pressure between the start of section A and the end of section C.**

**[1]**



**(ii) What direction does blood flow through sections A, B and C?**

**Explain how you can tell this from the graph.**

---

---

---

**[2]**

**(b) In which section would blood be flowing through ARTERIES?**

**Choose from A, B or C and explain your answer.**

---

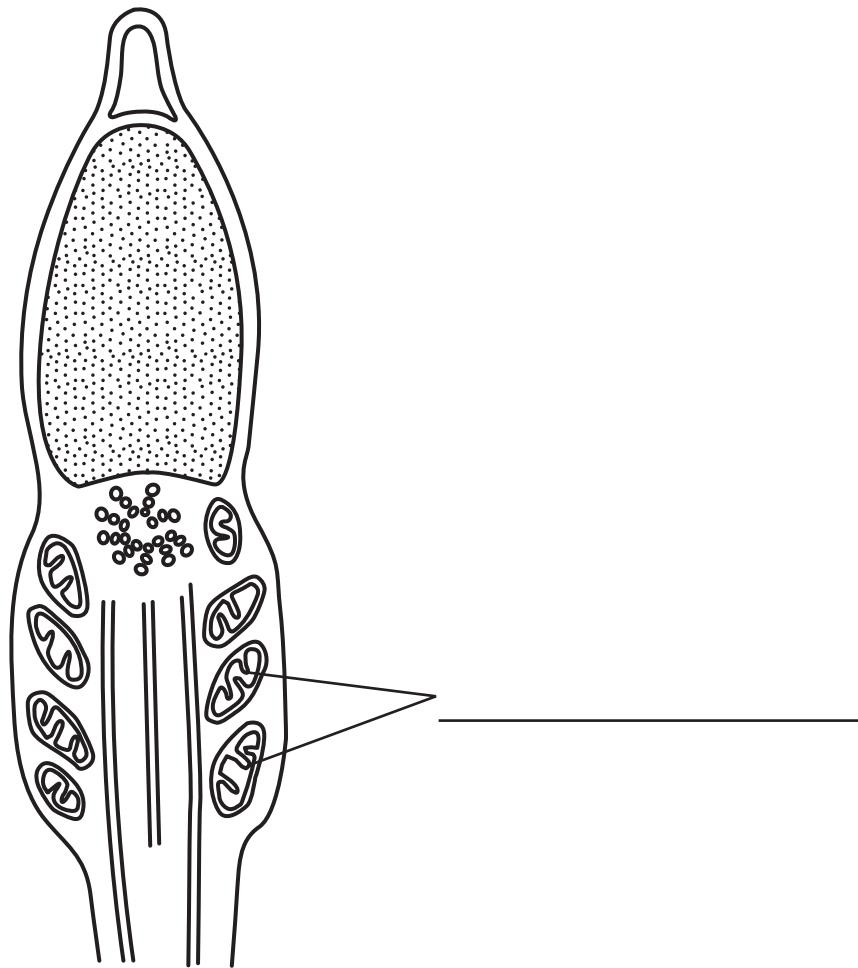
---

---

**[2]**

**3 (a) Look at the diagram.**

**It shows the head and middle sections of a sperm cell.**



**Which word is missing from the label on the diagram?**

**Put a tick (✓) in the box next to the correct answer.**

**chloroplasts**

☐

**chromosomes**

☐

**genes**

☐

**mitochondria**

☐

**[1]**

**(b) Scientists can genetically engineer the DNA of animals.**

**Chickens can be made to produce anti-cancer proteins in their eggs.**

**Goats can be made to produce anti-clotting proteins in their milk.**

**Scientists can quickly make medicines from these chickens and goats.**

- (i) What would scientists need to genetically engineer into chickens to make them produce anti-cancer proteins?**

\_\_\_\_\_ **[1]**

- (ii) Some people agree with these genetically engineered chickens and goats but other people are against them.**

**Suggest one reason why they may AGREE and one reason why they may be AGAINST them.**

\_\_\_\_\_

\_\_\_\_\_

\_\_\_\_\_

\_\_\_\_\_ **[2]**

**(c) Scientists have recently been able to make changes to human DNA.**

**How might this help humans in the future?**

---

---

---

---

**[2]**

**BLANK PAGE**

**4 This question is about growth and development.**

**Look at the graph opposite. It shows how the height changes in a human and a tree over 80 years.**

**(a) Plant growth differs from animal growth.**

**Explain how.**

**Use data from the graph to help you answer.**



**The quality of written communication will be assessed in your answer to this question.**

---

---

---

---

---

---

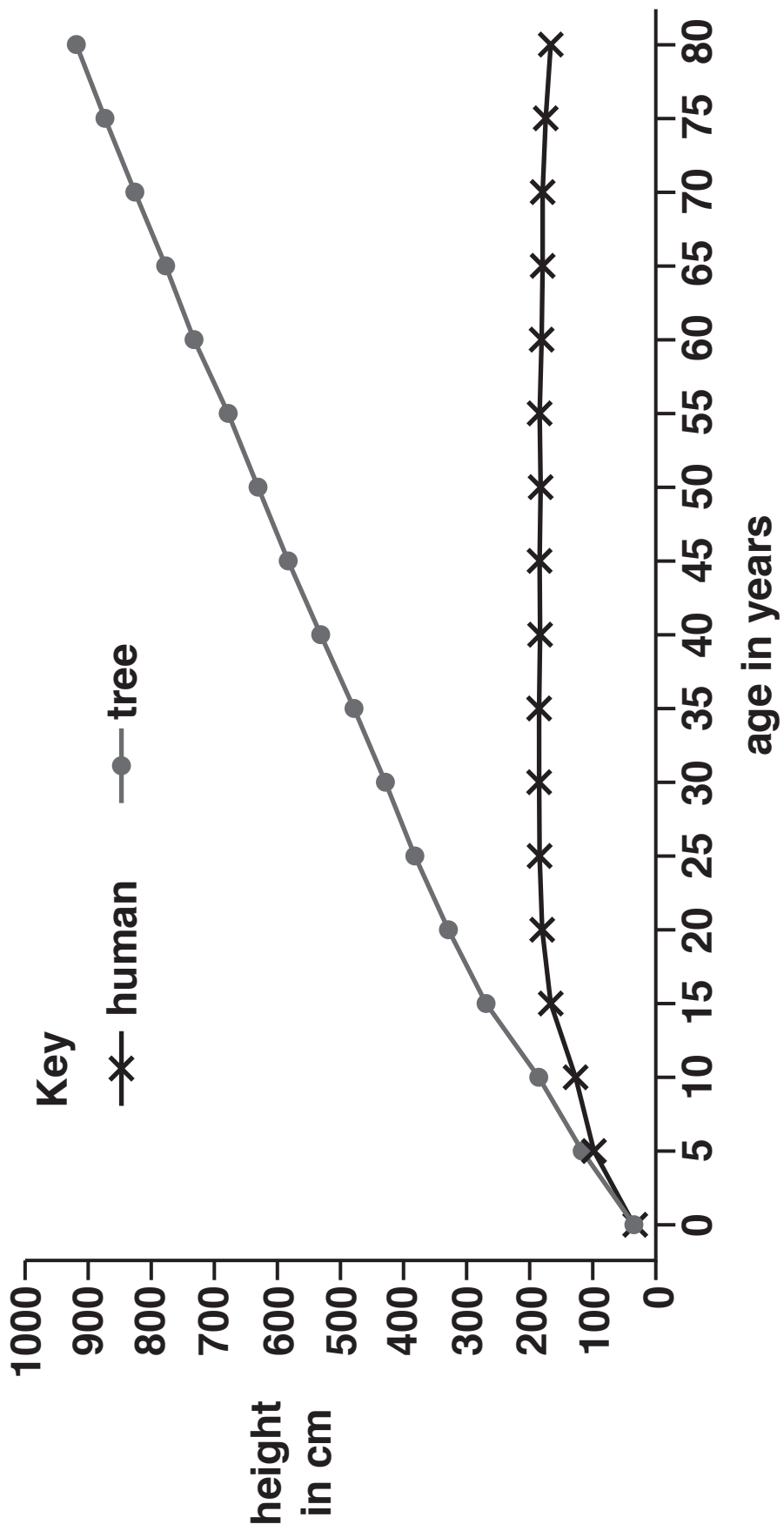
---

---

---

---

**[6]**



**(b) Growth involves cell division.**

**During cell division CHROMOSOMES must be copied.**

**Why is it important that chromosomes are copied?**

\_\_\_\_\_  
\_\_\_\_\_ [1]

**(c) Sperm cells are the male gametes in animals.**

**Why are sperm cells produced in large numbers?**

\_\_\_\_\_  
\_\_\_\_\_ [1]

**(d) Garden centres take cuttings of their plants to produce new plants to sell.**

**Cuttings are clones.**

**Write down one ADVANTAGE and one DISADVANTAGE of taking cuttings to produce new plants.**

\_\_\_\_\_  
\_\_\_\_\_  
\_\_\_\_\_  
\_\_\_\_\_ [2]



**BLANK PAGE**

## SECTION B – Module C3

**5 Magnesium reacts with hydrochloric acid.**

**Hydrogen and magnesium chloride are made.**

**(a) Write down the WORD equation for this reaction.**

\_\_\_\_\_ [1]

**(b) Peter adds 0.10 g of magnesium powder to 25.0 dm<sup>3</sup> of dilute hydrochloric acid.**

**The mean (average) rate of this reaction is 50 cm<sup>3</sup> of hydrogen per minute.**

**(i) Estimate the total volume of hydrogen made in the first 3 minutes.**

**volume of hydrogen = \_\_\_\_\_ cm<sup>3</sup> [1]**

- (ii) Peter repeats this experiment but uses magnesium lumps instead of powder.

The mean rate of reaction is  $10\text{ cm}^3$  of hydrogen per minute.

Use the reacting particle model to explain why.

---

---

---

---

[2]

- (iii) Peter repeats the experiment with magnesium lumps but also adds a catalyst.

Predict a value for the mean rate of reaction.

\_\_\_\_\_  $\text{cm}^3$  of hydrogen per minute [1]

- 6 Hydrogen peroxide solution breaks down to make water and oxygen.**

**hydrogen peroxide  $\rightarrow$  water + oxygen**

- (a) The molecular formula for hydrogen peroxide is  $\text{H}_2\text{O}_2$ .**

**Calculate the relative formula mass,  $M_r$ , of hydrogen peroxide.**

**The relative atomic mass of H = 1 and of O = 16**

**relative formula mass = \_\_\_\_\_ [1]**

- (b) In an experiment 6.8 g of hydrogen peroxide makes 3.2 g of oxygen.**

- (i) Use the principle of conservation of mass to predict the mass of water made.**

**mass of water = \_\_\_\_\_ g [1]**

**(ii) What mass of oxygen can be made from 680 g of hydrogen peroxide?**

**mass of oxygen = \_\_\_\_\_ g [2]**

**7 Pharmaceutical drugs are often made in a BATCH process.**

**Chemicals such as ammonia are made in a CONTINUOUS process.**

**(a) Describe the differences between a batch process and a continuous process.**

---

---

---

---

**[2]**

**(b) Pharmaceutical drugs need to be thoroughly tested before they can be licensed for use.**

**Explain why.**

---

---

---

**[2]**

- (c) One way to test if a pharmaceutical drug is pure is to find its melting point.

Sarah finds the melting point of five different samples of a pharmaceutical drug.

Look at her results.

Sample	Melting point in °C
A	152
B	153–158
C	155
D	155–157
E	157–160

Sarah knows that a pure sample of the pharmaceutical drug has a melting point of 157 °C.

Sarah concludes that sample E is the purest sample of the drug.

Do the results support her conclusion?

Explain your answer using evidence from the table.

---

---

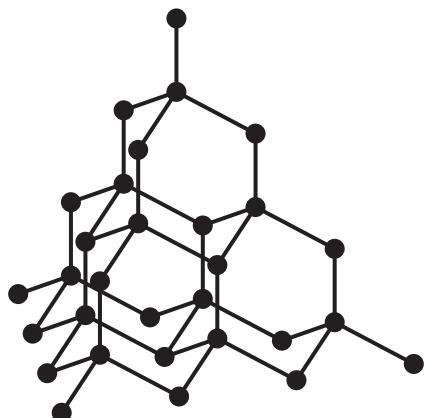
---

---

[2]

**8 Diamond is a form of carbon.**

**It has a giant molecular structure.**



**Write about FOUR of the physical properties of diamond and explain, in terms of properties, why diamond is used in cutting tools.**



**The quality of written communication will be assessed in your answer to this question. [6]**

---

---

---

---

---

---

---

---

---



---

---

---

---

---

---

---

---

---

---

- 9 A chemical can be made by several different chemical reactions.

Look at the table. It shows the percentage yield and atom economy for each different reaction.

Reaction	Percentage yield	Atom economy
V	30	60
W	40	20
X	45	50
Y	50	90
Z	90	100

(a) Which reaction is the GREENEST process?

\_\_\_\_\_

Explain your answer.

\_\_\_\_\_

\_\_\_\_\_

\_\_\_\_\_ [2]

**(b) During these reactions some product is always lost.**

**Which reaction loses the MOST product?**

**Explain your answer.**

---

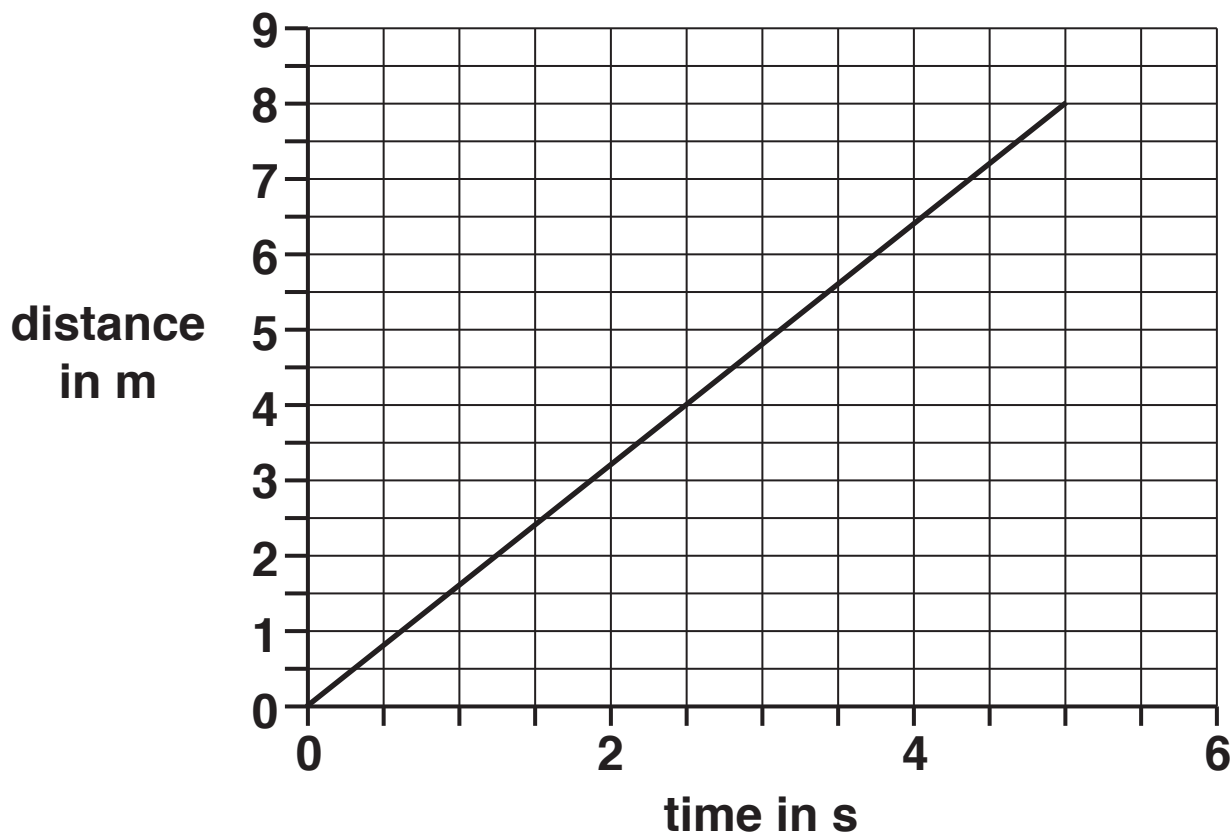
---

---

**[2]**

## SECTION C – Module P3

- 10 (a) Pedro draws a distance-time graph for a moving object.



What does the **GRADIENT** of Pedro's graph show?

Choose from

acceleration

distance

speed

time

Answer \_\_\_\_\_ [1]

**(b) What is the DIFFERENCE between speed and velocity?**

**Choose from**

**speed has direction**

**speed is faster than velocity**

**velocity has direction**

**velocity is faster than speed**

**answer \_\_\_\_\_ [1]**

**(c) Look at the diagram of car A and car B.**

**CAR A**



**speed of CAR A = 10 m/s**

**CAR B**



**speed of CAR B = 15 m/s**

**(i) What is the relative velocity of the cars?**

**Choose from**

**5 m/s**

**10 m/s**

**15 m/s**

**20 m/s**

**answer** \_\_\_\_\_ **[1]**

**(ii) Car B accelerates from 0 m/s to 15 m/s in 3 seconds.**

**Calculate the acceleration.**

**answer =** \_\_\_\_\_ **m/s<sup>2</sup> [2]**

**(iii) Car B now decelerates.**

**Describe what happens to the speed of the car.**

---

---

**[1]**

## 11 Sanjay learns about forces and planets.

He collects information about the weight of the same object on different planets.

Planet	Mass of object in kg	Weight and force to lift the object in N	Work done to lift the object 20 m
Mercury	1	3.8	76
Venus	1	8.8	176
Earth	1	10.0	200
Mars	1	3.9	

- (a) The object has the same mass on each planet but has a different weight.

Why does the object have a different weight on each planet?

---

---

[1]



**(b) Sanjay has NOT put the unit for work done in the table.**

**Calculate the work done to lift the object 20 m on Mars.**

**Write down the unit for work done in your answer.**

**work done = \_\_\_\_\_ unit \_\_\_\_\_ [3]**

**(c) The amount of work to lift the object on Earth is greater than the value given in the table.**

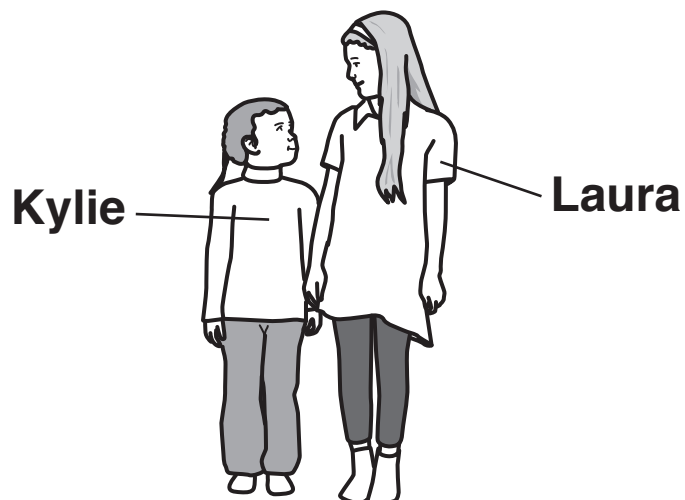
**This is because the object has frictional forces acting on it.**

**Explain why frictional forces increase the amount of work done.**

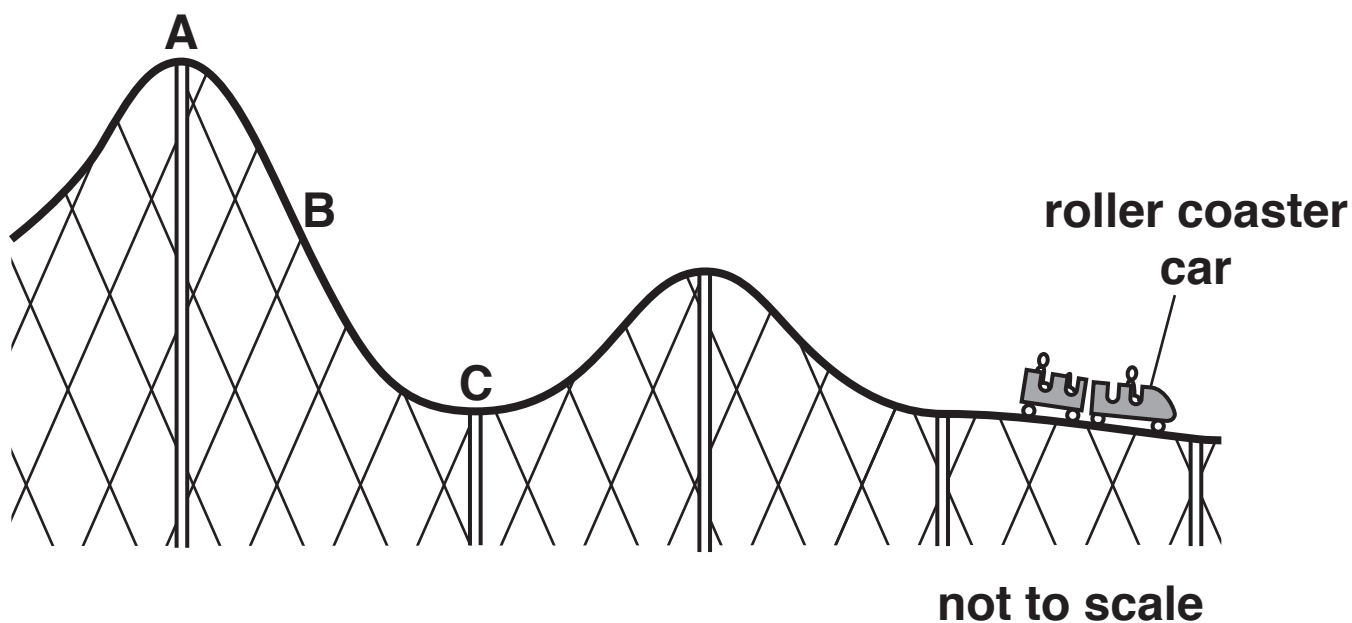
\_\_\_\_\_  
\_\_\_\_\_  
\_\_\_\_\_ [2]

**12 Kylie and Laura ride in a roller coaster car.**

**They have different masses.**



**The diagram shows the girls in the roller coaster car at the end of the ride.**



**Describe why Kylie and Laura have different kinetic energy (KE) to each other at B.**

**Describe how their gravitational potential energy (GPE) changes as the roller coaster car moves.**

**Use letters A, B and C from the diagram in your answer.**



**The quality of written communication will be assessed in your answer to this question.**

---

---

---

---

---

---

---

---

---

---

---

**[6]**

13 (a) George makes notes about stopping distance for his homework.

**Homework notes on stopping distance**

Stopping distance is thinking distance + braking distance.

Thinking distance is the time between seeing something and putting your foot on the brake pedal.

Braking distance is the distance the car travels before you brake.

Only braking distance is important for road safety.

There are three mistakes in his homework.

Identify the THREE mistakes.

---

---

---

---

---

[3]

**(b) Average speed cameras are used when there are road works on a motorway.**

**Average speed is often REDUCED to 50 miles per hour.**

**Explain how this helps to protect the people working on the motorway.**

---

---

---

---

**[2]**

- (c) There are various **RISKS** and **BENEFITS** that may be important when driving a car.

Put the following statements in the correct column in the table below.

One has been done for you. [2]

**A** Seat belts stop you hitting the windscreen in a crash.

**B** Crumple zones absorb energy during a crash.

**C** Seat belts may trap you in your seat after a crash.

**D** There is a sudden change in momentum in a crash.

**E** Seat belts change shape during a crash.

<b>Risk</b>	<b>Benefit</b>
	<b>A</b>

**END OF QUESTION PAPER**

**ADDITIONAL ANSWER SPACE**

**If additional space is required, you should use the following lined page(s). The question number(s) must be clearly shown in the margin(s).**








**BLANK PAGE**

**BLANK PAGE**

## **Copyright Information**

**OCR is committed to seeking permission to reproduce all third-party content that it uses in its assessment materials. OCR has attempted to identify and contact all copyright holders whose work is used in this paper. To avoid the issue of disclosure of answer-related information to candidates, all copyright acknowledgements are reproduced in the OCR Copyright Acknowledgements Booklet. This is produced for each series of examinations and is freely available to download from our public website ([www.ocr.org.uk](http://www.ocr.org.uk)) after the live examination series.**

**If OCR has unwittingly failed to correctly acknowledge or clear any third-party content in this assessment material, OCR will be happy to correct its mistake at the earliest possible opportunity.**

**For queries or further information please contact the Copyright Team, First Floor, 9 Hills Road, Cambridge CB2 1GE.**

**OCR is part of the Cambridge Assessment Group; Cambridge Assessment is the brand name of University of Cambridge Local Examinations Syndicate (UCLES), which is itself a department of the University of Cambridge.**